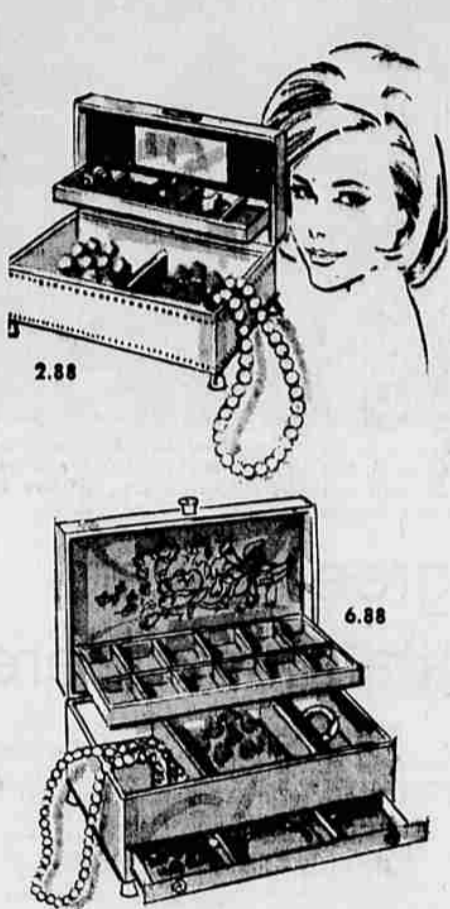


Mother's Day GIFT GUIDE

1481 NE Stephens



2.88

6.88

JEWEL BOX

SPECIAL PURCHASE!
MOTHER'S DAY GIFT IDEAS

6.88

For a collector's delight. Wards simulated leather box, automatic tray, drawer. Rayon satin lined. In ivory, pink, blue. Also, automatic tray, footed jewel box. Ivory, pink or blue. **2.88**



ARNEL JERSEY

SUMMER PRINT PRICED
FOR FASHION BUDGETS

10.98

Cool, carefree, completely crush-less Arnel® triacetate jersey! Wards flower-garden print is scattered over white in a crystal pleated, scoop neck fashion. Come see Wards complete collection. Misses sizes 10 to 18.



SAVE \$1 Carol Brent sleepwear

2.99
REG. 3.99

Mother will know you thought extra hard about her gift this year when she sees Wards fine sleep fashions... discovers their easy-care ways. But she'll never guess their little price! Lace-lavished gowns, pajamas, shortie PJ's of nylon; cool cotton gown and peignoir sets. S-M-L.



REG. \$1 LACY BRIEFS
75¢
Elastic-leg nylon briefs fancied with nylon lace. 32-42.



FASHION GLOVES

WARDS CHOICE FOR MOTHER'S DAY

1.98

Wards Carol Brent gloves of double woven nylon; shorties, side shirred, softly shirred styles. In black, white, beige, and some fashion shades. In sizes 6 1/2 to 8.



BASKET BAGS

A FASHION ACCENT FOR MOTHER

4.98

A perfect gift idea—Wards stylish woven bags in luxury wicker, plastic coated. Fully lined, genuine leather trim. Distinctive for Spring in beige, white or black.

SEAMLESS NYLONS

CAROL BRENT RUN-STOP
PROPORTIONED SHEERS

1.15
PR.

Wear Wards Run-Stop nylons 20% longer than ordinary stockings, thanks to bands at top and toe that prevent runs from entering sheer areas. Plain or micro-knit. Proportioned 9 to 11.



WARDS FINE CHINA REDUCED

REG. 47.95 STYLE HOUSE
66-PC. "PETITE BOUQUET"

39.95
Serves 8

100-piece set,
reg. 79.95... **59.95**

White body with rich platinum rim and dainty gray-and-pink roses.
47.95 GRANADA 57-pc. **41.95**
98-pc. set, reg. 79.95... **69.95**
PIERETTE 57-pc., reg. 47.95 **41.95**
100-pc. set, reg. 79.95... **69.95**
DAWN ROSE 57-pc., reg. 47.95
..... **41.95**
100-pc. set, reg. 79.95... **69.95**



SAVE A BIG 25%

LINGERIE LUXURY
BY CAROL BRENT

2.99
REG. 3.99

For Mother, gifts of elegance and easy-care... Antron® slips. Antron® is DuPont's name for nylon at its fashion best. Lacy bodice, back, hem. Sizes 32 to 44. Regular 2.99 pefficoat to match... 1.99



Cleanup Dates Scheduled At Canyonville Cemetery

The annual cemetery cleanup, sponsored by the Canyonville Cemetery Association, will be held May 25-26, the weekend before Memorial Day, correspondent Mrs. R. E. Proctor reports.

The association has hired men to do some cleanup work and mow grass. Canyonville school students and members of the IOOF Lodge have each worked on sections of the cemetery, but all Canyonvillagers interested are invited to participate in the annual cleanup.

Seeks House Post

SALEM (UPI) — Rep. Winton Hunt, R-Woodburn, said here he will be a candidate for speaker of the House in 1965.

LEGAL

National Forest Timber For Sale

Two Mile Sale

Oral auction bids will be received by the Forest Supervisor, or his authorized representative at the office of the Forest Supervisor, Federal Office Building, Roseburg, Oregon, beginning at 2:00 P.M., June 10, 1963, for all merchantable timber marked or designated for cutting on an area embracing 194 acres, more or less, within sections 25 and 36, T. 29 S., R. 1 E., and sections 30 and 31, T. 29 S., R. 2 E., W.M., surveyed in the Umpqua National Forest, Oregon. The estimated volumes are: 7,000 M board feet of Douglas-fir, 1,000 M board feet of ponderosa pine and other species of pine, 1,600 M board feet of incense cedar and other species. The minimum acceptable bid per M board feet is as follows: Douglas-fir \$18.20, ponderosa pine and other species of pine \$16.00, incense cedar and other species \$7.00. This includes the following rates, per M board feet for stumpage including deposit for sale area betterment: \$3.00 base rate plus an additional \$14.75 for Douglas-fir, \$3.00 base rate plus an additional \$12.65 for ponderosa pine and other species of pine, \$6.65 for incense cedar and other species and \$9.35 for slash disposal for all species. The stumpage rates payable for each species will be increased by the amortization rate in effect for that species when the unamortized estimated cost of the main haul roads has been amortized by timber scaled. The unamortized estimated cost is \$68,098.00. Amortization rates are: Douglas-fir \$10.06 per M board feet, ponderosa pine and other species of pine \$8.60 per M board feet and incense cedar and other species \$3.83 per M board feet. Amortization of estimated main haul road costs is computed on 80 percent of the estimated timber volume. The prices bid for stumpage shall be considered as tentative rates subject to quarterly calendar adjustment upward or downward by 0.5 of the difference between the average of the monthly Douglas-fir region indices, as calculated by the Forest Service or the Western Pine Association Lumber Price Index for three previous months, and the base indices: Douglas-fir 108.69(D), ponderosa pine and other species of pine 82.75. Such adjustments in the price for stumpage shall be applicable to timber scaled during the three-month period following the quarter for which the adjustment is computed. In no event, however, shall the payment rates for each quarter be less than the base rates as stated above. When the adjusted rates by species are lower than the base rates, the difference between the dollar value of the timber cut at adjusted rates and at base rates will be recorded for each species. The stumpage rate for a species will not be increased above the base rate until the subsequent adjusted rates above the base rate will develop an accumulated total dollar value for the species in excess of the recorded accumulated difference for all species. Sealed bids will be publicly opened and posted, at the office of the Forest Supervisor, at 2:00 P.M., on June 10, 1963. All those who submitted a satisfactory sealed bid will be permitted immediately to continue auction bidding. A money order, bank draft, cashier's or certified check in the sum of \$7,200.00 must accompany each bid, to be applied to the purchase price, refunded, or retained for application to any claim for damages, according to the conditions of sale. If requested by the purchaser, contract terms will permit felling of timber in advance of payment up to the value of the performance bond. If an oral bid is declared to be high at the closing of the auction, the bidder must immediately confirm the oral bid by submitting it in writing on a Forest Service bid form. The right to reject any and all bids is reserved. Forest Service bid forms for use in submitting sealed bids and full information concerning the timber, the conditions of sale and the submission of bids should be obtained from the District Ranger, Cow Creek Ranger Station, Tiller, Oregon, or the Forest Supervisor, Roseburg, Oregon, before bids are submitted.

National Forest Timber For Sale

Brownie Creek Sale

Oral auction bids will be received by the Forest Supervisor, or his authorized representative at the office of the Forest Supervisor, Federal Office Building, Roseburg, Oregon, beginning at 2:00 P.M., June 10, 1963, for all merchantable timber marked or designated for cutting on an area embracing 154 acres, more or less, within sections 1, 2, and 3, T. 32 S., R. 2 W., W.M., surveyed in the Umpqua National Forest, Oregon. The estimated volumes are: 6,700 M board feet of Douglas-fir and pine, 300 M board feet of incense cedar and other species. The minimum acceptable bid per M board feet is as follows: Douglas-fir and pine \$21.65, incense cedar and other species \$9.10. This includes the following rates per M board feet for stumpage including deposit for sale area betterment: \$3.00 base rate plus an additional \$18.25 for Douglas-fir and pine, \$8.70 for incense cedar and other species and \$0.40 for slash disposal for all species. The stumpage rates payable for each species will be increased by the amortization rate in effect for that species when the unamortized estimated cost of the main haul roads has been amortized by timber scaled. The unamortized estimated cost is \$41,504.00. Amortization rates are: Douglas-fir and pine \$7.80 per M board feet, incense cedar and other species \$3.29 per M board feet. Amortization of estimated main haul road costs is computed on 80 percent of the estimated timber volume. The prices bid for stumpage shall be considered as tentative rates subject to quarterly calendar adjustment upward or downward by 0.5 of the difference between the average of the monthly Douglas-fir region indices, as calculated by the Forest Service for the three previous months, and the following base indices: Douglas-fir and pine 103.02(C). Such adjustments in the price for stumpage shall be applicable to timber scaled during the three-month period following the quarter for which the adjustment is computed. In no event, however, shall the payment rates for each quarter be less than the base rates as stated above. When the adjusted rates by species are lower than the base rates, the difference between the dollar value of the timber cut at adjusted rates and at base rates will be recorded for each species. The stumpage rate for a species will not be increased above the base rate until the subsequent adjusted rates above the base rate will develop an accumulated total dollar value for the species in excess of the recorded accumulated difference for all species. Sealed bids will be publicly opened and posted, at the office of the Forest Supervisor, at 2:00 P.M., on June 10, 1963. All those who submitted a satisfactory sealed bid will be permitted immediately to continue auction bidding. A money order, bank draft, cashier's or certified check in the sum of \$7,200.00 must accompany each bid, to be applied to the purchase price, refunded, or retained for application to any claim for damages, according to the conditions of sale. If requested by the purchaser, contract terms will permit felling of timber in advance of payment up to the value of the performance bond. If an oral bid is declared to be high at the closing of the auction, the bidder must immediately confirm the oral bid by submitting it in writing on a Forest Service bid form. The right to reject any and all bids is reserved. Forest Service bid forms for use in submitting sealed bids and full information concerning the timber, the conditions of sale and the submission of bids should be obtained from the District Ranger, Cow Creek Ranger Station, Tiller, Oregon, or the Forest Supervisor, Roseburg, Oregon, before bids are submitted.

National Forest Timber For Sale

Brownie Creek Sale

Oral auction bids will be received by the Forest Supervisor, or his authorized representative at the office of the Forest Supervisor, Federal Office Building, Roseburg, Oregon, beginning at 2:00 P.M., June 10, 1963, for all merchantable timber marked or designated for cutting on an area embracing 154 acres, more or less, within sections 1, 2, and 3, T. 32 S., R. 2 W., W.M., surveyed in the Umpqua National Forest, Oregon. The estimated volumes are: 6,700 M board feet of Douglas-fir and pine, 300 M board feet of incense cedar and other species. The minimum acceptable bid per M board feet is as follows: Douglas-fir and pine \$21.65, incense cedar and other species \$9.10. This includes the following rates per M board feet for stumpage including deposit for sale area betterment: \$3.00 base rate plus an additional \$18.25 for Douglas-fir and pine, \$8.70 for incense cedar and other species and \$0.40 for slash disposal for all species. The stumpage rates payable for each species will be increased by the amortization rate in effect for that species when the unamortized estimated cost of the main haul roads has been amortized by timber scaled. The unamortized estimated cost is \$41,504.00. Amortization rates are: Douglas-fir and pine \$7.80 per M board feet, incense cedar and other species \$3.29 per M board feet. Amortization of estimated main haul road costs is computed on 80 percent of the estimated timber volume. The prices bid for stumpage shall be considered as tentative rates subject to quarterly calendar adjustment upward or downward by 0.5 of the difference between the average of the monthly Douglas-fir region indices, as calculated by the Forest Service for the three previous months, and the following base indices: Douglas-fir and pine 103.02(C). Such adjustments in the price for stumpage shall be applicable to timber scaled during the three-month period following the quarter for which the adjustment is computed. In no event, however, shall the payment rates for each quarter be less than the base rates as stated above. When the adjusted rates by species are lower than the base rates, the difference between the dollar value of the timber cut at adjusted rates and at base rates will be recorded for each species. The stumpage rate for a species will not be increased above the base rate until the subsequent adjusted rates above the base rate will develop an accumulated total dollar value for the species in excess of the recorded accumulated difference for all species. Sealed bids will be publicly opened and posted, at the office of the Forest Supervisor, at 2:00 P.M., on June 10, 1963. All those who submitted a satisfactory sealed bid will be permitted immediately to continue auction bidding. A money order, bank draft, cashier's or certified check in the sum of \$7,200.00 must accompany each bid, to be applied to the purchase price, refunded, or retained for application to any claim for damages, according to the conditions of sale. If requested by the purchaser, contract terms will permit felling of timber in advance of payment up to the value of the performance bond. If an oral bid is declared to be high at the closing of the auction, the bidder must immediately confirm the oral bid by submitting it in writing on a Forest Service bid form. The right to reject any and all bids is reserved. Forest Service bid forms for use in submitting sealed bids and full information concerning the timber, the conditions of sale and the submission of bids should be obtained from the District Ranger, Cow Creek Ranger Station, Tiller, Oregon, or the Forest Supervisor, Roseburg, Oregon, before bids are submitted.

National Forest Timber For Sale

Brownie Creek Sale

Oral auction bids will be received by the Forest Supervisor, or his authorized representative at the office of the Forest Supervisor, Federal Office Building, Roseburg, Oregon, beginning at 2:00 P.M., June 10, 1963, for all merchantable timber marked or designated for cutting on an area embracing 154 acres, more or less, within sections 1, 2, and 3, T. 32 S., R. 2 W., W.M., surveyed in the Umpqua National Forest, Oregon. The estimated volumes are: 6,700 M board feet of Douglas-fir and pine, 300 M board feet of incense cedar and other species. The minimum acceptable bid per M board feet is as follows: Douglas-fir and pine \$21.65, incense cedar and other species \$9.10. This includes the following rates per M board feet for stumpage including deposit for sale area betterment: \$3.00 base rate plus an additional \$18.25 for Douglas-fir and pine, \$8.70 for incense cedar and other species and \$0.40 for slash disposal for all species. The stumpage rates payable for each species will be increased by the amortization rate in effect for that species when the unamortized estimated cost of the main haul roads has been amortized by timber scaled. The unamortized estimated cost is \$41,504.00. Amortization rates are: Douglas-fir and pine \$7.80 per M board feet, incense cedar and other species \$3.29 per M board feet. Amortization of estimated main haul road costs is computed on 80 percent of the estimated timber volume. The prices bid for stumpage shall be considered as tentative rates subject to quarterly calendar adjustment upward or downward by 0.5 of the difference between the average of the monthly Douglas-fir region indices, as calculated by the Forest Service for the three previous months, and the following base indices: Douglas-fir and pine 103.02(C). Such adjustments in the price for stumpage shall be applicable to timber scaled during the three-month period following the quarter for which the adjustment is computed. In no event, however, shall the payment rates for each quarter be less than the base rates as stated above. When the adjusted rates by species are lower than the base rates, the difference between the dollar value of the timber cut at adjusted rates and at base rates will be recorded for each species. The stumpage rate for a species will not be increased above the base rate until the subsequent adjusted rates above the base rate will develop an accumulated total dollar value for the species in excess of the recorded accumulated difference for all species. Sealed bids will be publicly opened and posted, at the office of the Forest Supervisor, at 2:00 P.M., on June 10, 1963. All those who submitted a satisfactory sealed bid will be permitted immediately to continue auction bidding. A money order, bank draft, cashier's or certified check in the sum of \$7,200.00 must accompany each bid, to be applied to the purchase price, refunded, or retained for application to any claim for damages, according to the conditions of sale. If requested by the purchaser, contract terms will permit felling of timber in advance of payment up to the value of the performance bond. If an oral bid is declared to be high at the closing of the auction, the bidder must immediately confirm the oral bid by submitting it in writing on a Forest Service bid form. The right to reject any and all bids is reserved. Forest Service bid forms for use in submitting sealed bids and full information concerning the timber, the conditions of sale and the submission of bids should be obtained from the District Ranger, Cow Creek Ranger Station, Tiller, Oregon, or the Forest Supervisor, Roseburg, Oregon, before bids are submitted.

National Forest Timber For Sale

Brownie Creek Sale

Oral auction bids will be received by the Forest Supervisor, or his authorized representative at the office of the Forest Supervisor, Federal Office Building, Roseburg, Oregon, beginning at 2:00 P.M., June 10, 1963, for all merchantable timber marked or designated for cutting on an area embracing 154 acres, more or less, within sections 1, 2, and 3, T. 32 S., R. 2 W., W.M., surveyed in the Umpqua National Forest, Oregon. The estimated volumes are: 6,700 M board feet of Douglas-fir and pine, 300 M board feet of incense cedar and other species. The minimum acceptable bid per M board feet is as follows: Douglas-fir and pine \$21.65, incense cedar and other species \$9.10. This includes the following rates per M board feet for stumpage including deposit for sale area betterment: \$3.00 base rate plus an additional \$18.25 for Douglas-fir and pine, \$8.70 for incense cedar and other species and \$0.40 for slash disposal for all species. The stumpage rates payable for each species will be increased by the amortization rate in effect for that species when the unamortized estimated cost of the main haul roads has been amortized by timber scaled. The unamortized estimated cost is \$41,504.00. Amortization rates are: Douglas-fir and pine \$7.80 per M board feet, incense cedar and other species \$3.29 per M board feet. Amortization of estimated main haul road costs is computed on 80 percent of the estimated timber volume. The prices bid for stumpage shall be considered as tentative rates subject to quarterly calendar adjustment upward or downward by 0.5 of the difference between the average of the monthly Douglas-fir region indices, as calculated by the Forest Service for the three previous months, and the following base indices: Douglas-fir and pine 103.02(C). Such adjustments in the price for stumpage shall be applicable to timber scaled during the three-month period following the quarter for which the adjustment is computed. In no event, however, shall the payment rates for each quarter be less than the base rates as stated above. When the adjusted rates by species are lower than the base rates, the difference between the dollar value of the timber cut at adjusted rates and at base rates will be recorded for each species. The stumpage rate for a species will not be increased above the base rate until the subsequent adjusted rates above the base rate will develop an accumulated total dollar value for the species in excess of the recorded accumulated difference for all species. Sealed bids will be publicly opened and posted, at the office of the Forest Supervisor, at 2:00 P.M., on June 10, 1963. All those who submitted a satisfactory sealed bid will be permitted immediately to continue auction bidding. A money order, bank draft, cashier's or certified check in the sum of \$7,200.00 must accompany each bid, to be applied to the purchase price, refunded, or retained for application to any claim for damages, according to the conditions of sale. If requested by the purchaser, contract terms will permit felling of timber in advance of payment up to the value of the performance bond. If an oral bid is declared to be high at the closing of the auction, the bidder must immediately confirm the oral bid by submitting it in writing on a Forest Service bid form. The right to reject any and all bids is reserved. Forest Service bid forms for use in submitting sealed bids and full information concerning the timber, the conditions of sale and the submission of bids should be obtained from the District Ranger, Cow Creek Ranger Station, Tiller, Oregon, or the Forest Supervisor, Roseburg, Oregon, before bids are submitted.

National Forest Timber For Sale

Brownie Creek Sale

Oral auction bids will be received by the Forest Supervisor, or his authorized representative at the office of the Forest Supervisor, Federal Office Building, Roseburg, Oregon, beginning at 2:00 P.M., June 10, 1963, for all merchantable timber marked or designated for cutting on an area embracing 154 acres, more or less, within sections 1, 2, and 3, T. 32 S., R. 2 W., W.M., surveyed in the Umpqua National Forest, Oregon. The estimated volumes are: 6,700 M board feet of Douglas-fir and pine, 300 M board feet of incense cedar and other species. The minimum acceptable bid per M board feet is as follows: Douglas-fir and pine \$21.65, incense cedar and other species \$9.10. This includes the following rates per M board feet for stumpage including deposit for sale area betterment: \$3.00 base rate plus an additional \$18.25 for Douglas-fir and pine, \$8.70 for incense cedar and other species and \$0.40 for slash disposal for all species. The stumpage rates payable for each species will be increased by the amortization rate in effect for that species when the unamortized estimated cost of the main haul roads has been amortized by timber scaled. The unamortized estimated cost is \$41,504.00. Amortization rates are: Douglas-fir and pine \$7.80 per M board feet, incense cedar and other species \$3.29 per M board feet. Amortization of estimated main haul road costs is computed on 80 percent of the estimated timber volume. The prices bid for stumpage shall be considered as tentative rates subject to quarterly calendar adjustment upward or downward by 0.5 of the difference between the average of the monthly Douglas-fir region indices, as calculated by the Forest Service for the three previous months, and the following base indices: Douglas-fir and pine 103.02(C). Such adjustments in the price for stumpage shall be applicable to timber scaled during the three-month period following the quarter for which the adjustment is computed. In no event, however, shall the payment rates for each quarter be less than the base rates as stated above. When the adjusted rates by species are lower than the base rates, the difference between the dollar value of the timber cut at adjusted rates and at base rates will be recorded for each species. The stumpage rate for a species will not be increased above the base rate until the subsequent adjusted rates above the base rate will develop an accumulated total dollar value for the species in excess of the recorded accumulated difference for all species. Sealed bids will be publicly opened and posted, at the office of the Forest Supervisor, at 2:00 P.M., on June 10, 1963. All those who submitted a satisfactory sealed bid will be permitted immediately to continue auction bidding. A money order, bank draft, cashier's or certified check in the sum of \$7,200.00 must accompany each bid, to be applied to the purchase price, refunded, or retained for application to any claim for damages, according to the conditions of sale. If requested by the purchaser, contract terms will permit felling of timber in advance of payment up to the value of the performance bond. If an oral bid is declared to be high at the closing of the auction, the bidder must immediately confirm the oral bid by submitting it in writing on a Forest Service bid form. The right to reject any and all bids is reserved. Forest Service bid forms for use in submitting sealed bids and full information concerning the timber, the conditions of sale and the submission of bids should be obtained from the District Ranger, Cow Creek Ranger Station, Tiller, Oregon, or the Forest Supervisor, Roseburg, Oregon, before bids are submitted.

National Forest Timber For Sale

Brownie Creek Sale

Oral auction bids will be received by the Forest Supervisor, or his authorized representative at the office of the Forest Supervisor, Federal Office Building, Roseburg, Oregon, beginning at 2:00 P.M., June 10, 1963, for all merchantable timber marked or designated for cutting on an area embracing 154 acres, more or less, within sections 1, 2, and 3, T. 32 S., R. 2 W., W.M., surveyed in the Umpqua National Forest, Oregon. The estimated volumes are: 6,700 M board feet of Douglas-fir and pine, 300 M board feet of incense cedar and other species. The minimum acceptable bid per M board feet is as follows: Douglas-fir and pine \$21.65, incense cedar and other species \$9.10. This includes the following rates per M board feet for stumpage including deposit for sale area betterment: \$3.00 base rate plus an additional \$18.25 for Douglas-fir and pine, \$8.70 for incense cedar and other species and \$0.40 for slash disposal for all species. The stumpage rates payable for each species will be increased by the amortization rate in effect for that species when the unamortized estimated cost of the main haul roads has been amortized by timber scaled. The unamortized estimated cost is \$41,504.00. Amortization rates are: Douglas-fir and pine \$7.80 per M board feet, incense cedar and other species \$3.29 per M board feet. Amortization of estimated main haul road costs is computed on 80 percent of the estimated timber volume. The prices bid for stumpage shall be considered as tentative rates subject to quarterly calendar adjustment upward or downward by 0.5 of the difference between the average of the monthly Douglas-fir region indices, as calculated by the Forest Service for the three previous months, and the following base indices: Douglas-fir and pine 103.02(C). Such adjustments in the price for stumpage shall be applicable to timber scaled during the three-month period following the quarter for which the adjustment is computed. In no event, however, shall the payment rates for each quarter be less than the base rates as stated above. When the adjusted rates by species are lower than the base rates, the difference between the dollar value of the timber cut at adjusted rates and at base rates will be recorded for each species. The stumpage rate for a species will not be increased above the base rate until the subsequent adjusted rates above the base rate will develop an accumulated total dollar value for the species in excess of the recorded accumulated difference for all species. Sealed bids will be publicly opened and posted, at the office of the Forest Supervisor, at 2:00 P.M., on June 10, 1963. All those who submitted a satisfactory sealed bid will be permitted immediately to continue auction bidding. A money order, bank draft, cashier's or certified check in the sum of \$7,200.00 must accompany each bid, to be applied to the purchase price, refunded, or retained for application to any claim for damages, according to the conditions of sale. If requested by the purchaser, contract terms will permit felling of timber in advance of payment up to the value of the performance bond. If an oral bid is declared to be high at the closing of the auction, the bidder must immediately confirm the oral bid by submitting it in writing on a Forest Service bid form. The right to reject any and all bids is reserved. Forest Service bid forms for use in submitting sealed bids and full information concerning the timber, the conditions of sale and the submission of bids should be obtained from the District Ranger, Cow Creek Ranger Station, Tiller, Oregon, or the Forest Supervisor, Roseburg, Oregon, before bids are submitted.

IF YOU (and your family)

Drink...



MILK

CALL...

MOUNTAIN VIEW DAIRY

OS 9-5779

FRESH DAILY!

for HOME DELIVERY
of High Quality
Locally Produced
MILK