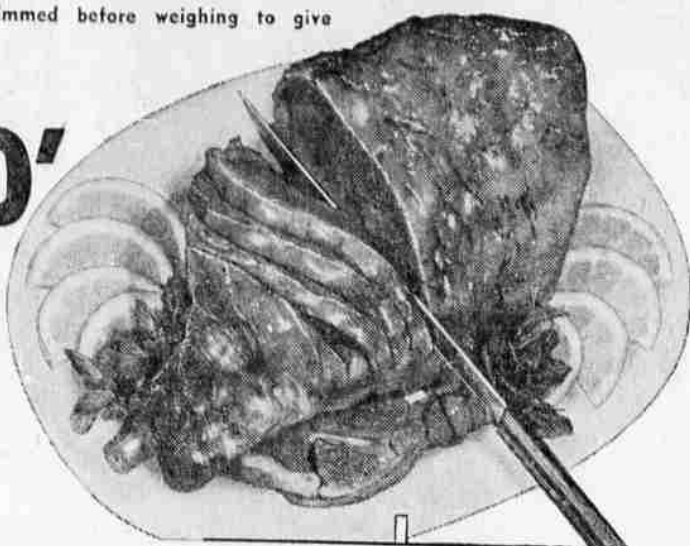




Shop the Drive-N-Save Way where you get the finest cuts of meat that are guaranteed to please you. All are table trimmed before weighing to give you the most for your money.



**LEG O' LAMB**  
**59<sup>c</sup>**



- EASTERN CORN-FED PORK —**
- FRESH PICNIC ROAST ..... lb. **29<sup>c</sup>**
  - CENTER CUT PORK ROAST ..... lb. **39<sup>c</sup>**
  - LEAN PORK STEAK ..... lb. **49<sup>c</sup>**
  - FRESH PORK HOCKS ..... lb. **25<sup>c</sup>**
  - WH. HOG SAUSAGE Our Own Mix ..... lb. **45<sup>c</sup>**
  - RATH'S WIENERS ..... 2 lbs. **89<sup>c</sup>**
  - BOLOGNA By the Piece ..... lb. **35<sup>c</sup>**

- SMALL LOIN CHOPS lb. **79<sup>c</sup>**
- SMALL RIB CHOPS lb. **69<sup>c</sup>**
- RND. BONE CHOPS lb. **65<sup>c</sup>**
- SHOULDER CHOPS lb. **59<sup>c</sup>**
- SHOULDER ROAST lb. **35<sup>c</sup>**
- LAMB SHANKS ..... lb. **25<sup>c</sup>**
- LAMB NECK For Stew lb. **19<sup>c</sup>**
- BREAST O' LAMB ..... lb. **10<sup>c</sup>**

**More Testimony Slated On Dams**

ORTLAND (AP) — The long federal Power Commission hearing on Snake River dams resumed this morning before examiner William C. Levy. He is taking testimony on Pacific Northwest Power Co.'s proposal to build High Mountain Sheep Dam and on the rival application of Washington Public Power Supply System for Nez Perce Dam. PNP is a combine of Private Utilities. WPPSS is a group of publicly owned power firms. Technical aspects of the effectiveness of proposed fish passage facilities at the dams were discussed Tuesday by Forrest R. Hauck, the Idaho Fish and Game Commission's fisheries biologist and coordinator of basin investigations. He said many of the answers to the problem of getting salmon runs down and back up over dams to spawning streams may be known next fall. The first fish, born above the barrier of the Idaho Power Co.'s Brownlee Dam on the Snake, passed down through the 60-mile-long reservoir on their migration to the sea in 1958, are due to return then. This must be followed, he said, by a study of a "whole complex of interrelated problems." Hauck said the fish passage problem at Brownlee resulted, for one thing, in "the wide gap that existed between designing a structure to do a certain job and being able to make it do that job." Spokesmen for Washington and Oregon fish and game agencies testified today.

**Easter PLUSH ANIMALS**  
Fancy Plush . . . Foam Filled **1.99**

**Well Made EASTER BASKETS**  
Choice of sizes. Reg. 39c ea **29<sup>c</sup>**

**Assorted Colors EASTER GRASS**  
Giant size bags. Reg. 29c Bag **19<sup>c</sup>**

**Easter SEWING BASKET**  
Can be used as Easter Purse. **98<sup>c</sup>**

**Radio Connection Installed At Riddle**

By ERMA BEST  
The new radio base station has been hooked up with the Riddle city recorder's office, enabling city officials to transmit and receive messages from the city fire truck, rural fire department tanker, pump, and pumper.

Regular 99c  
**Boys Dress Socks**  
Cotton and nylon blend. Sizes 6 to 9 1/2  
**3 PAIR 89<sup>c</sup>**

**Boys Short Sleeve SPORT SHIRTS**  
Wash 'N Wear Fabric. New Spring shades. Sizes 6 thru 16.  
**1.39**

Assorted Pastel Shades  
**DARNETTE ANKLETS** Sizes 3 1/2 thru 11 **4.99<sup>c</sup>**  
Short Sleeve  
**LADIES BLOUSES** Asst. shades and sizes **97<sup>c</sup>**  
**HANES MENS & BOYS UNDERWEAR**

The new system also has contact with the Roseburg rural fire department, both to transmit and receive. A transmitting and receiving set will be installed in the city police car shortly.  
Mr. and Mrs. Roscoe Ball of Riddle spent several days in San Francisco recently while visiting their son, Jack, who is stationed at the Treasure Island Naval Base. They also visited former Riddle residents, the Bill George family in Camden, Calif., and the Elmer Mitchell family in Sunnyvale, Calif., both located near San Jose, Calif.

Boys Polished Cotton  
**SPORT PANTS** Assorted sizes **2.98**  
Little Boys Short Sleeve  
**SPORT SHIRTS** Asst. sizes, Just Like Dads **99<sup>c</sup>**  
Half and Full Length  
**GIRLS SLIPS** Assorted sizes. Reg. 99c **69<sup>c</sup>**  
Reg. 1.75 Tonette  
**Children's Permanent SEAMLESS NYLONS** New! No-mix-No Mess. Easter special. Asst. sizes **1.59** plus tax **59<sup>c</sup>**

**BUSTER BROWN GARMENTS**  
For infants and Pre-School Youngsters.  
100% Cotton Knit. New Spring Shades.  
Priced from **1.19**

Mr. and Mrs. H. A. Peden and daughter spent a part of the spring vacation visiting relatives in Livermore, Calif.  
Mr. and Mrs. Francis Ruckel and three children were recent weekend visitors in Klamath Falls with the Ruckel's son-in-law and daughter, Mr. and Mrs. Wilford Lee. They were accompanied on the trip by Ruckel's mother, Mrs. Henry Ruckel.  
Recent Riddle visitors were former residents, Mr. and Mrs. R. E. Fuller and family, of Pendleton who were guests during spring vacation at the M. E. Fuller home. M. E. Fuller left this week on a business trip to San Francisco.

Girls Reg. 1.98  
**EASTER DRESSES**  
Assorted styles. Washable 100% cotton. Choice of shades. Assorted sizes. **1.39**

Girls Spring  
**SPORTSWEAR**  
Choice of shorts, Jamicas, Walking Shorts, Pedal Pushers, and white blouses. Assorted sizes. All in new spring colors. Your choice. **98<sup>c</sup>**

Easter Filled  
**Pull Toys** Wooden Const. 99<sup>c</sup>  
**Easter Baskets** 49<sup>c</sup> & up  
Press 25  
**Flashbulbs** Sylvania 1.19  
Foil Filled Easter  
**Plush Animals** 2.79  
Cannon  
**Bath Towels** 2 for 1.00  
Easter Special  
**Oval Roasters** 69<sup>c</sup>  
Glass Utility  
**Baking Pan** 2 Quart 89<sup>c</sup>  
Angel Food  
**Cake Pan** 89<sup>c</sup>  
Large Size  
**Cookie Sheet** 69<sup>c</sup>  
13" x 115'  
**Shelf Paper** Roll 69<sup>c</sup>  
Easter  
**Coloring Books** 29<sup>c</sup>  
Styrofoam  
**Easter Eggs** pkg. 27<sup>c</sup>  
Styrofoam  
**Easter Chicks** pkg. 27<sup>c</sup>  
Ladies  
**6-Way Belts** Asst. styles 99<sup>c</sup>  
Washable—Asst. sizes  
**Slipper Mocs!** 99<sup>c</sup>

**in Emergency**  
  
could you STOP in time?

**PP&L Plans Sale Of Coast Plant**

SALEM (AP) — An application has been filed by Pacific Power & Light Co. to sell its steam electric generating plant at Garibaldi on the coast, to the Oregon-Washington Plywood Co., the Public Utility Commission announced. The application said the plant had been on standby for emergencies in its Tillamook County distribution area. It said the plant would be isolated because PP&L must sell its system in the county to the local Peoples Utility District.

**MENS SPORT SHIRTS**  
Short sleeves. Wash 'N Wear. Wide assortment of patterns to choose from. Sizes S,M,L,XL. Fresh new spring colors. **1.59** ea. **2/2.89**

**MENS SPORT PANTS**  
Polished Cotton and Bedford Cord. Assorted sizes. **3.98**

Open 7 days a week 9 to 9 for your shopping convenience. Always plenty of free parking and low, low everyday prices.

**drive-n-save MARKET**

there's only one **SKIPPY**  
BEWARE OF IMITATIONS  
LOOK FOR THE HAPPY LITTLE DOG  
  
TOPS IN QUALITY!  
LOW IN PRICE

SHOP OUR SELECTION OF EASTER CARDS.