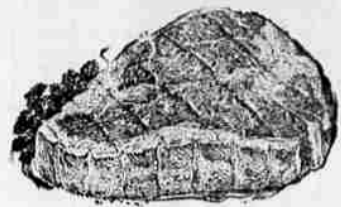


Tender "USDA CHOICE" Beef, Scientifically Aged

T-BONE STEAKS AND CLUB STEAKS



Like barbecued steaks? We've got the finest steaks you'll find anywhere. Properly trimmed before weighing.

98¢ lb.

More Steak Specials Featured at Safeway

TOP SIRLOINS 1.19 lb.

Here's a juicy "USDA CHOICE" Steak that will really set your mouth watering. Well marbled for extra flavor.

TENDERLOINS 1.89 lb.

Here's the perfect meat for delicious outdoor barbecues... Safeway's "USDA CHOICE" well-aged beef steaks.

More Great Savings During Safeway's

Pork Loin Sale

From 2 1/2 to 3 1/2-lbs. Rib & End cut Pork

LOIN ROAST lb. 53¢

Country style... Grand for Barbecuing

SPARE RIBS lb. 59¢

Tender Center Cuts Rib Pork &

LOIN CHOPS lb. 75¢

Full Half or Whole 8 to 12-lbs.

PORK LOINS lb. 59¢

Ground Beef Pure, lean top quality beef... guaranteed 3 lb. pkg. 1.59 lb. 55¢

Sliced Bacon Fully smoked, std. layer pack lb. 75¢

Tender Oven-ready

Fresh Fryers

Plump, sweet meated fryers from 2 to 2 3/4-lbs., Whole drawn...

lb. 39¢

Cut-up Fryers 2 to 2 3/4-lb. lb. 49¢

Full Half Fryers Fresh for barbecuing lb. 45¢

FRESH FRYER PARTS

Back & Necks lb. 39¢

Wings lb. 45¢

Breasts lb. 89¢

Thighs lb. 85¢

Drum Sticks lb. 85¢

Take Your Pick of the World's Finest Coffees on Sale Now at Your Safeway Stores!

EDWARDS

A RICH BLEND OF THE WORLD'S FINEST COFFEES

Buy The Large Tins & Save More
1-lb. tin 79¢ 4-lb. tin \$3.13

2-lb. tin 1.57

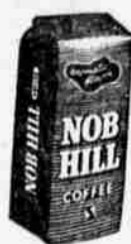


NOB HILL

THE COFFEE THAT TASTES AS GOOD AS IT SMELLS

2-lb. bag 1.53

1-lb. bag 77¢



AIRWAY

MILD AND MELLOW BLEND—THE COFFEE LOVERS FAVORITE

2-lb. bag 1.49

1-lb. bag 75¢



Wakefield Coffee Reg. or drip grind vacuum packed 1-lb. tin 69¢

AIRWAY INSTANT Safeway INSTANT

6 oz. jar 99¢

6 oz. jar \$1.15

Prices in this advertisement are effective through August 23rd, at Safeway in Roseburg. We reserve the right to limit.



BLIMP CREW—Capt. H. B. Van Gorder (in dark jacket) who commanded the blimp ZPG-2 on its 9400-mile scientific expedition into the Arctic, beams as he and his crew leave their blimp after landing at Weymouth, Mass. The blimp, carrying a crew of 15 Navy personnel, technicians, and scientists, left Weymouth at the end of July and traveled to Fletcher Island, a 45-square-mile block of ice floating in the Arctic Ocean, about 500 miles from the North Pole.

Yugoslavia Asks Economic Aid From America

WASHINGTON (AP)—Communist Yugoslavia is asking for additional American economic aid to finance a number of industrial projects that were to have been paid for out of loans from the Soviets.

The Soviets canceled some 285 million dollars in promised loans last May in a crackdown move against Yugoslav President Tito, who follows a course independent of Moscow control.

Officials said here that the Yugoslav government has turned to the United States with a petition for 250 million dollars to pay for construction of new power stations and fertilizer plants, railroad modernization and some highway equipment.

State Department officials were reported to be looking with favor on the loan request amid indications some money would be turned over shortly to the Yugoslavs.

The officials were said to be taking the view that Yugoslavia must be bolstered to help the country continue its course of independent communism.

During the year which ended June 30 the United States supplied Yugoslavia with 103 million dollars in economic aid. About 73 million of this was in surplus wheat. Tito abruptly ended American military help last fall and even spurned an offer to be supplied with spare parts for weapons he had already gotten from this country.

But with the stiffening of Tito's relations with Moscow, the Yugoslavs resumed purchases of parts in limited quantities last February, officials said.

Breast Surgery Possible Cancer Elimination Method

By RENNIE TAYLOR Associated Press Science Writer

ABOARD SS MATSONIA—A way of virtually knocking out breast cancer as a cause of death has become a possibility in the not distant future even though no blanket cure is in sight.

The idea is based on the simple arithmetic of breast cancer fatalities and consideration of what surgery can do. It postulates that women past the child-bearing age would free themselves of the danger of breast carcinoma by having the milk glands removed from their breasts even though there is no indication of malignancy.

This would mean extraction of about half the bulk of the tissues within the breasts, but not the removal or destruction of the breasts themselves. It also would serve as a start toward reshaping breasts for aesthetic reasons.

A surgeon who neither approved nor disapproved the idea brought it to light here in discussing the future of medicine before a group of about 50 doctors from all over the United States.

He is Clarence Berne, professor of surgery at the University of Southern California Medical School. His talk was part of a unique medical refresher course conducted by USC aboard this liner en route to Los Angeles from Honolulu.

Plain statistics show that one out of every five cancer deaths among women is due to breast malignancy. In a great majority of cases breast cancer originates in the milk gland tissue. Also, most breast cancer occurs in older women usually those past childbearing age. It follows logically that elimination of the site of origin automatically would deal a substantial if not an actual knockout blow to breast carcinoma.

Wilson Not Curious About Back Of Moon

PETOSKEY, Mich. (AP)—Former Defense Secretary Charles E. Wilson says he's not very curious about the other side of the moon.

Discussing the U.S. moon rocket attempt, Wilson said here Monday night. "Maybe I'm too old and not as curious as I was. But I think the other side of the moon is much like this side."

Wilson told a joint meeting of Petoskey community organizations that he deplored the possibility of an arms race with Russia.

This nation's atomic submarine success may not be a good thing, Wilson added, if it is considered as part of an arms race.

Can Man Stand Cosmic Rays? That's Question

PALO ALTO, Calif. (AP)—The hardware to shoot a man to the moon in a space ship may be in sight.

But a still unanswered question is: "Could a human pilot survive the rifling bombardment of cosmic rays outside the earth's atmosphere?"

"We really have no idea of how great the hazard may be," Col. David G. Simons, Air Force balloon explorer, told a man-on-the-moon symposium at Stanford University.

Simons reached 102,000 feet in a balloon flight last year and has two gray hairs on his forehead as a result. He said photoplate evidence indicates a hit from a primary ray killed the pigment cells of the hairs.

Relatively, Simons said, the heavy primary rays are like rifle bullets and nuclear radiation like shotgun pellets.

Beyond 150,000 feet altitude, man would encounter primary rays ranging free and unchecked by atmospheric molecules.

Simons said the University of Chicago is attempting to develop a device for a comprehensive check of the density of the exploded atom particles in space.

"We do have tenuous evidence for assuming man could survive up to 24 hours of cosmic radiation," Simons told the closing symposium of the American Astronautical Society's Western region.

12 MISSING IN SLIDE

DOMODOSSOLA, Italy (AP)—A huge landslide roared down today on the village of San Giovanni di Crevoladossola, and 12 persons were reported missing. The slide was caused by eight hours of torrential rains.

Dial ORchard 2-1311

DURING THE FAIR FOR COMPLETE PAGE BOY SERVICE Another Public Service of

The News-Review

Buyers Of Logs Are Becoming More Selective

COPWALLIS (AP)—Log buyers are becoming more selective, with a supply sufficient to meet demand, but prices through Western Oregon continue firm, the weekly farm forest products report from Oregon State College said today.

Northern Willamette Valley sawlogs have been selling at \$50 to \$51 for No. 1 long and up to \$95 for No. 1 fir peelers. Lincoln County prices have been a bit higher with peelers up to \$100. The Albany-Philomath-Corvallis area price ranged \$90 to \$100 for No. 1 peelers and \$58 to \$62 for best sawlogs. Camp run fir logs brought \$35 to \$50 for long, and mostly \$40 for short.

Douglas County demand and buying was good with No. 1 fir peelers \$85 to \$90 and No. 3 down to \$35 to \$60. No. 1 sawlogs were as high as \$50 and No. 3 down to \$35.

The 1958 cone crop was reported ranging from very poor to good, depending on specie and location. Cone collectors were advised to check with county agents or the state forester's office, for species in demand and specifications.

REALLY GOOD! like home made



6th Annual RICKETTS' TALENT CONTEST

4 Nites of Top Entertainment New Stage and Sound System A Free "Bonus Attraction"

DOUGLAS County FAIR

AUG. 21-24 ROSEBURG

SINGER SALE!

SAVE \$20.00 on these POPULAR PRICED SINGER PORTABLES

An Honest Saving—not a reduction from a fictitious list

Brand new SINGER Round Bobbin Budget Portable—(\$99.95 during sale). Backstitch, sews over pins, has handy drop-in bobbin.

Brand new aluminum FEATHERWEIGHT* (only 11 pounds) handles heaviest sewing tasks with ease. Only \$139.75

YOUR CHOICE OF EITHER MACHINE ONLY \$10.00 DOWN—\$133 per week

Handsome Carrying Case, Attachments, SINGER Sewing Course Included—NO HIDDEN EXTRAS!

Singer Sewing Machine Co.
558 S. E. Jackson OR 3-7348