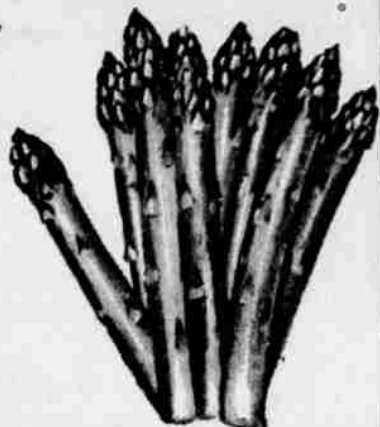


U. S. No. 1 Extra Fancy

# ASPARAGUS

Tender--Spring Fresh  
All Green Spears

lb. **19c**



Crisp--Juicy  
**CELERY  
HEARTS**

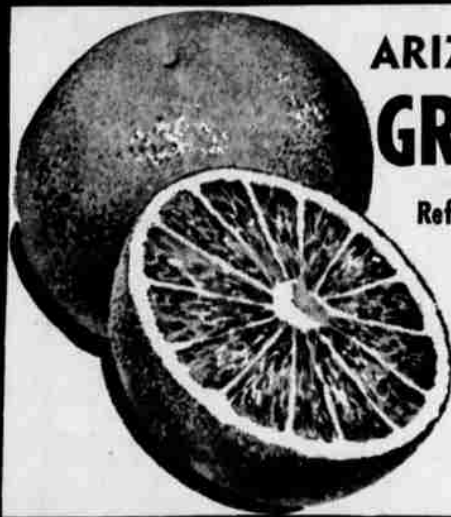
PKG. **19c**

Firm--Ripe  
Juicy  
**Tomatoes**

13-oz. Tube **21c**

Crisp--Topped  
Firm--Fresh  
**CARROTS**

3 lbs. **19c**



## ARIZONA WHITE GRAPEFRUIT

Refreshing--Pick-Me-Up Flavor

8-9 lb. Bag

**49c**



For quality products at lower prices, the convenient place to shop is Douglas county's complete family shopping center, the City Drive-in Market. Meats prices effective Fri. and Sat., March 22 and 23. All other prices effective now through Sunday, March 24.

## WHOLE KERNEL CORN

Cottage, tender and sweet, 303 can.

**3/25c**

## ANGEL FOOD MIX

Swansdown, instant cake mix, reg. 17 oz. pkg. (limit 6)  
Makes a full-size angel food cake

**29c**

## CORNED BEEF

Hereford, lean and tender, 12 oz. tin.

**29c**

## CAKE MIXES

Jiffy White, Yellow, Spice, Chocolate  
loaf size, 9 oz. pkg., 10c

**10/99c**

## ROYAL GELATINE

choice of 7 true-fruit flavors, reg. pkg.,

**6/25c**

## INSTANT MILK

Stark's non-fat dry milk solids, 12 quart pkg.,

**55c**

**PREAM** Instant coffee cream, new large 7-oz. jar **39c**

**CANNED MILK** Cottage, finest quality Tall tins **3/35c**

**DRY BEANS** Red, Navy, Pinto varieties Bulk, lb. **10c**

**VIM** Libby's zestful new drink 12-oz. **2/25c** 46-oz. **37c**

**COFFEE** Schilling Golden West 1-lb. **99c** 2-lb. **1.97**

**INSTANT COFFEE** Chase & Sanborn 2-oz. jars **2/69c**

**COFFEE** Boyd's 1-lb. tin **89c** 2-lb. **1.77**

**COFFEE** Wishbone, economical 1-lb. tin **59c**

**BUTTER** Meadowbrook, creamery-fresh lb. **59c**

**PEANUT BUTTER** Table-ready, creamy 18-oz. jar **49c**

**VANISH** Household cleanser new large 40 oz. can **39c**

**GLIM LIQUID** Mild Detergent 22-oz. cans **2/89c**

Bonneville

### SWEET PICKLES

Small, uniform sweets, 56-oz. jar **89c**

**KRAFT'S HARVEST MOON  
MAYONNAISE, SALAD DRESSING  
or SANDWICH SPREAD**

Your Choice, Pint **19c**

Fradelis

### TEE VEE DINNERS

Grilled Halibut steak or Fried Shrimp, fresh-frozen, each a complete dinner for one. **69c**

Libby's Fresh-Frozen  
**GRAPEFRUIT JUICE  
OR  
BLENDED JUICE**

Reg. 6 oz. can **10c**

**DELETE** Rust and stain remover 12-oz. can **29c**

**GLO-COAT** Johnson's, with free Klean Floor Quart **98c**

**SOAP** SWEETHEART Milder, reg. size **4/29c** Bath **4/39c**

**RITZ CRACKERS** Nabisco favorite 1-lb. box **37c**

**ALL DETERGENT** New giant 23-lb. box **4.79**

**DISH ALL** For dishwashers 20-oz. pkg. **43c**

**MD TISSUE** Soft, white 4 roll pkg. **45c**

**MD NAPKINS** Pkg. of 80, white **10c** Colors **2/25c**

**MJB RICE** Long grain, white 28-oz. box **37c**

**MJB RICE** Nutritious brown rice 28-oz. box **35c**

**MJB RICE** Quick-cooking 24-oz. box **39c**

**TREE TEA BAGS** Black Pkg. of 100 bags **79c**

Jiffy

### BISCUIT MIX

All-purpose, 40-oz. pkg. **29c**

### Meadowbrook MELLORINE

Smooth, iced dessert,

Qt. **29c** 1/2 gal. **49c** Gal. **89c**

Home-Freezer Pack Meadowbrook

### ICE CREAM SHERBET

3 Gal. **3.79** 3 Gal. **2.75**

Liquid

### VANO STARCH

For easier ironing. 1/2 gal. **39c**

### TV EQUIPMENT

**RABBIT EARS**  
Indoor TV antennas  
Factory priced at 9.95 **1.98**

### OUTSIDE ANTENNAS

3-element Yagi antennas Reg. price, 9.95. Now **5.95**  
5-element Yagi antennas Reg. price, 14.95. Now **9.95**

### VOLTAGE REGULATOR

One — just one surge of electricity over 120 volts could cost you a 25.00 or 30.00 repair bill. Be prepared!!  
One—Just One Voltage Regulator **2.75**

### LEAD IN WIRE

300 OHM flat lead-in, ft. **4c**  
Ladder type, open lead-in, reg. 8c ft., ft. **5c**



It's Neat It's Practical

It's got what it takes to make it the outstanding buy of all T. V. sets. The RCA Victor, model 6225 "Trasette" is the most popular set we've ever had in our stock, and now we've made it an even better buy, by reducing the price. It now costs you less than the cheaper, unknown brands. Can you imagine buying one of RCA's top models for this low price?

**NEW RCA Model 6225 ONLY 199<sup>95</sup>**

**NEW** city drive in  
HIGHWAY 90 N. **MARKET**

BE READY! GET YOUR 1957 FISHING LICENSE HERE!