

Here's Guide To Delicious Turkey For Holiday Feast

Whether you are a bride who is cooking her first holiday meal, or you are an old timer at cooking, you will find the following information furnished by the Gas Appliances Manufacturers' Association, a handy guide when you get ready to roast it for the festive meal.

The size bird you order will, of course, depend upon the number of people you plan to serve. Weighed ready-to-cook, you should figure at least a pound a person. The experts suggest that you buy a bird one and a half times as large as you need, in order to have plenty left over to satisfy the family.

Prepare stuffing according to the weight of the bird. This table tells you how much for a turkey weighing:—

8-12 lbs.—2½ quarts (10 cups)

12-16 lbs.—3½ quarts (14 cups)

16-20 lbs.—4½ quarts (18 cups)

20-25 lbs.—6 quarts (24 cups)

RECOMMENDED ROASTING TIME, using the open-pan method for a stuffed turkey, with oven temperature set at 300 degrees, is given here in minutes per pound:

7-10 lbs. approx. 30 min. per lb.

10-15 lbs. approx. 20 min. per lb.

15-18 lbs. approx. 18 min. per lb.

18-20 lbs. approx. 15 min. per lb.

20-25 lbs. approx. 12 min. per lb.

Care should be taken to baste the turkey properly during the roasting time.

Turkeys that are foil wrapped without stuffing, and with oven temperature set at 450 degrees, is given here in minutes per pound.

7-10 lbs. approx. 17 min. per lb.

10-15 lbs. approx. 15 min. per lb.

15-18 lbs. approx. 12 min. per lb.

18-20 lbs. approx. 11 min. per lb.

20-25 lbs. approx. 10 min. per lb.

Be sure to open foil 20 minutes to half an hour before end of roasting time to allow juice to escape into roaster.

TEST FOR DONENESS is the same for both methods. The bird is done when the drumstick can be moved easily and the thick portion feels very soft when pinched.



AFTER DINNER, the finishing touch is brandy and cigars, a ritual that will be aided and abetted by this brass brandy warmer and brass trimmed butterfly ashtray.

Newest Marvels Of Modern Science Come To Playland

Santa's pack will be well loaded this year with atomic, supersonic electronic and remote controlled devices, accurate replicas of the wonders of the modern scientific world, which the Toy Manufacturers of the U.S.A. have been busy making ready for Christmas giving.

Among outer space vehicle and equipment will be air-pressure propelled rockets, launching bases, and even a guided missile base. And, as the young modern scientists know, when you travel in outer space you encounter satellites, so the manufacturers have provided them, too.

As each surprising new innovation in ultra modern locomotion appears, toy makers begin construction of their counterparts for the toy world. Newest among these is a working, gas propelled miniature of the "flying platform" recently announced by the armed forces. The miniature comes equipped with a soldier and flies to a height of 50 feet.

Remote control, now a part of our daily living, is represented in the world of toys by such devices as miniature tractors, street cleaners and autos operated off flashlight batteries, can also by robots that now can walk, talk and pick up objects. Practically all of these may be operated from a distance by a guide wire.

In the field of miniature electronic equipment there are radar sets, two-way radios, broadcast-

ing stations and other similar workable toys which may well help many a child learn the wonders of modern communication and detection.

Toy radio stations for gift giving actually can send and receive messages up to half a mile, operating on flashlight batteries. Toy radar rocket cannon are equipped to spot the target. Complete electronic communication systems permit the spotter to talk with the operator while the radar antenna rotates to pick up "beep" signals.

Many of the electronic toys for this Christmas have combinations of loud speakers and radar equipment to increase instructive play value.

Yes, the atomic, electronic and supersonic age has arrived in the toy world.

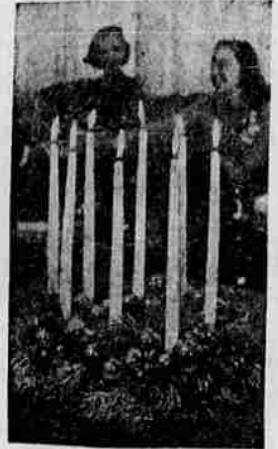
GIVE BRIDAL BEAUTY
Christmas is a favorite time of the year for engagement announcements. Delight the bride-to-be with gifts of trousseau-treasure lingerie.

BELL RINGER
Attractive way to decorate the door for Christmas is with a chain of bells, which can be hung above or beside the front entrance to chime whenever the door is opened.

Stocking stuffer for a child can be chosen from assorted candy Santas.



MISSION BELLS with matched tones and keyboard bring creative music into the lives of little ones with this Kampanile set.



LIGHTING ADVENT WREATH, a lovely old custom, shown here. Wreath base is of styrofoam, pine and assorted color Yule balls. It's a long lasting plan.



HERE'S NEWEST TRICK in bikes. This is for him, or convertible for her, by simply snapping down the cross bar, equipped with adjustable training outrigger which can be removed.



PERFECT MATCH for some lucky man's Christmas are these handsome cuff links and tie-bar, featuring subtly shaded stones in a simple silver mounting, packaged. Pioneer.



THREE DIMENSIONAL pictures are easy to make as any others, with the new stereo cameras. Shown here with flash equipment ready is a Stereo Graphic.

All illustrations are exact reproductions of merchandise at Carstens.

save \$80 **only \$3 a week**

magnificent 3-pc. sofa

Stratford's new Prelude group, an inspired design that brings you dramatic styling and lasting comfort and beauty at a low, low price. Deep tufted seat and back cushioned with thick rubberized hair. Double deep coil-spring seat over No-Sag spring base. Guaranteed construction. Large size, seats six! Use it as a dramatic room divider or as a space-saving corner group. Rich fabrics in choice of colors.

269⁹⁵
Reg. 349.95

LONG CONVENIENT TERMS

man-size comfort

Stratolounger Special
reg. 119.50
99⁵⁰

115 degree angle decrease concentration of weight on vital areas.

100 degree angle for comfortable lounging in an upright position.

135 degree angle reduces strain on vital organs to a minimum.

LONG CONVENIENT TERMS

The secret to comfort is in this scientifically designed Stratolounger. Seat and back operate independently of each other. This distributes your weight more evenly, relieves the pull of gravity, angles your body from 100 to 135 degrees, automatically, simply by leaning back. Give this gift of healthful, complete relaxation. Covered in combination of nylon support plastic and nubby metallic tweed in your choice of six colors.

Do your Christmas Shopping Early!

Say Merry Christmas with Long-Wanted FURNITURE GIFTS FOR THE HOME

Parquet Top Tables

Flair-fashioned with gleaming brass braces. Tops are heat and acid-resistant plastic in rich parquet design. Limed oak finish. Rigidly constructed. Tapered legs with brass ferrules. Buy now . . . save \$8 each at this low price.

Reg. 27.95
19.95

scoop!

LONG CONVENIENT TERMS

SWIVEL ROCKER
reg. 99.95
69⁹⁵

IT SWIVELS AND ROCKS

T-cushioned seat, with 100% foam rubber, is reversible for extra service. Wide, low pillow arms for extra comfort. High, broad-shouldered back. Rich fabric . . . choice of colors. Save \$30. Only \$1.50 a week.

deluxe 5-PC. BRIDGE SET
Reg. 32.95
24⁹⁵

Comfort-contoured seats and backs on chairs, padded table. Upholstered with washable Vinyl plastic-coated fabrics in choice of colors. Fold flat and stack for storage. Built to give you years and years of comfort and service.

Mr. and Mrs. BEDROOM
reg. 169.95
119⁹⁵

Most wanted by today's menfolk . . . because there's a clear and equal division of drawer space in the big Mr. and Mrs. Dresser and two sliding door compartments in the handsome bookcase bed. Even the large mirror tilts to accommodate people of different height. Chest and nite stand also available at special Christmas prices.

- Rich swirl pearl mahogany finish
- Gleaming brass drawer pulls
- Rigid dovetailed drawers
- Adjustable tilting mirror
- Many other high quality features

Smart Giving
Gifts galore from your **Smart Living** furniture store

CARSTENS FURNITURE COMPANY
ORchard 3-4015 829 South East Cass Avenue

LONG CONVENIENT TERMS