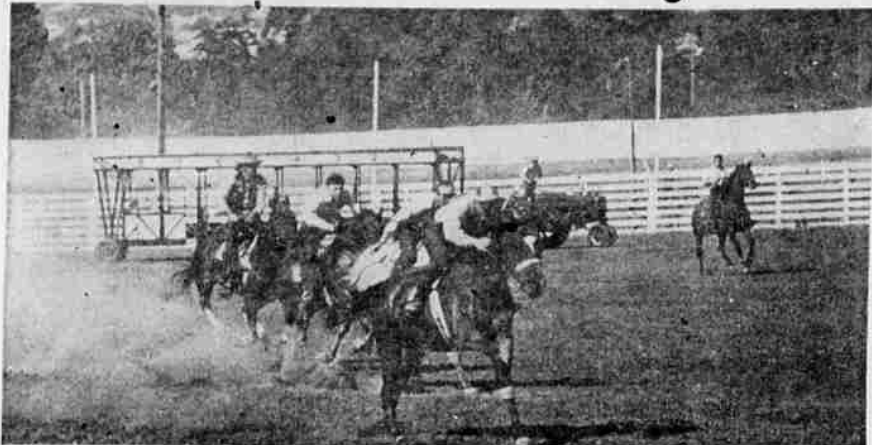


# Horse Races Scheduled For Douglas County Fair Saturday And Sunday



**JIG SMOKE ROMPS HOME**—He was the winner in this half-mile race last year at the county fair. Horse racing will be in the limelight again this year at the fair. Six races each have been scheduled for Saturday and Sunday. (Paul Jenkins photo).

## Racing Secretary Outlines Rules For Two-Day Event

Horses from the length of the Pacific Coast are expected to be at the Douglas County Fair Saturday and Sunday, Aug. 25-26. Races haven't been made up yet — they may depend on just what horses enter the second year of concentration on horse-racing. But the general rules have been formulated by Harry Huckler, the racing secretary.

The racing program will start at 2:30 p.m. Saturday and 1:30 p.m. Sunday.

The first general rule, as outlined by Huckler, is that there are to be six races each day, with a limit of six entries in each race. Entries will open at 8 a.m. Friday and close at 8 p.m. before the race.

Purses will be paid out to three places: 60 per cent to first, 30 per cent to second and 10 per cent to third. Entry fees of \$10 a race will be added to \$100 purses in each race. One race will be an ex-

ception. That is the Doc Carter Trophy Race, for Douglas County saddle horses only. The purse will be \$125 and the race will be run Sunday.

All races are to start from a standard starting gate obtained last year from the Lebanon fair. All races listed as saddle horse races or for stock horses must be run with a stock saddle and curb bit. All other races not listed as saddle horse races may be run with any legal racing equipment.

A printed racing program for benefit of spectators will be distributed each day, according to Dick Turley, fair manager. The information in the program will include names of horses, owners, jockeys, purses, etc.

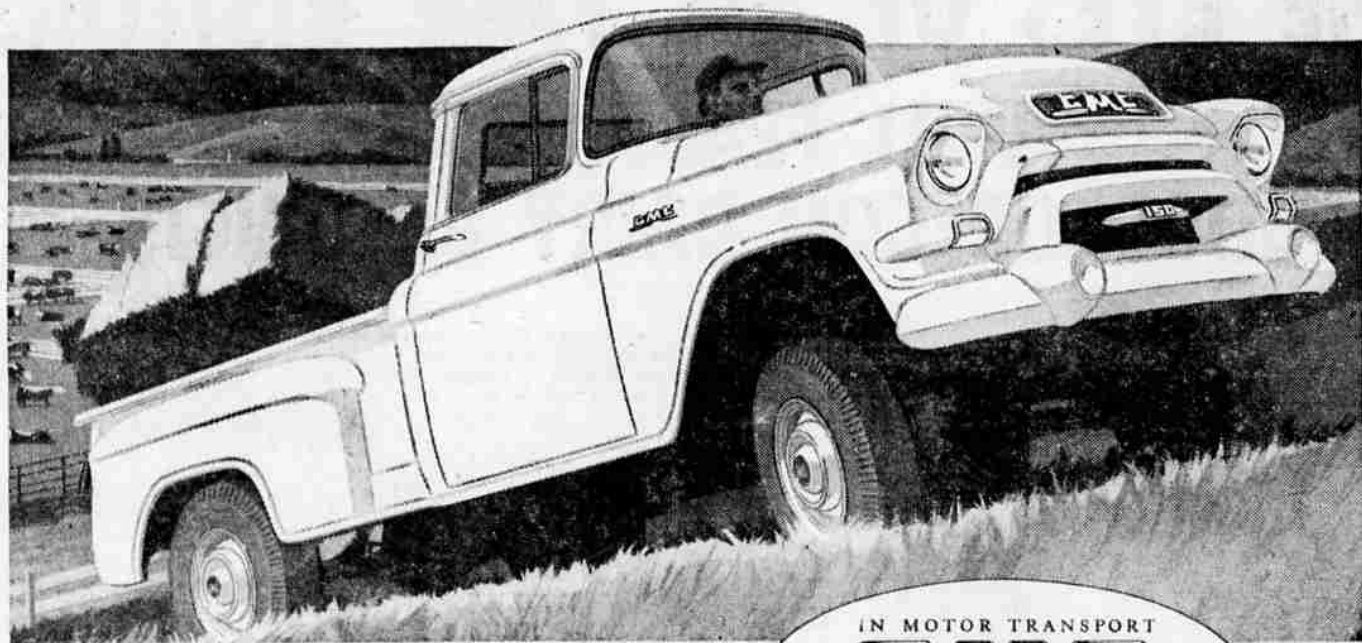
First record of the conquest of the island of Cyprus is of an Egyptian invasion about 1500 B.C.

SEE ALL THE NEW BLUE CHIP

# GMC 4-WHEEL DRIVE

*New all-purpose vehicle has 6-way lead over the field!*

AT THE DOUGLAS COUNTY FAIR



Your key to Blue Chip value

**YOU'VE** never heard of a 4-wheel drive like this new one from GMC!

It's a REAL truck—with truck horsepower no one else comes close to.

The drive is truck-strong to take the big torque output.

It takes its full rated loads in  $\frac{1}{2}$ -,  $\frac{3}{4}$ - and 1-ton models—over any terrain, and up even 60% grades.

It has the full road speed of standard GMC models.

It has a *single* lever that gives 4-wheel drive in Low and High positions, or rear-wheel drive alone in High.

It takes a big family—in distinctive Blue Chip GMC smartness—in regular passenger-car use, and off-the-beaten-path pleasure trips.

also in our big GMC display  
LOG TRUCKS  
LOG TRAILERS  
and other GMC equipment

A Salesman Will Be On Duty Everyday To Answer Your Questions

## COMMERCIAL TRUCK SALES, INC.

2191 North East Stephens St.

Dial ORchard 3-5594