

Consider Location Of Room When Choosing Colors

One should always consider the exposure of a room before selecting its colors. A sunny room with a southern exposure requires a different color scheme from a north room which is all but cut off from direct natural light. It is possible to compensate for nature by using cool blues and greens in a sunny room and warmer colors in one which does not receive much natural light.

Proper Tools Make Gardening Chores Easier And Less Tiring

After the long winter months—at last—Spring! And as the early bulbs begin to bloom—homeowners' thoughts turn to the many fix-up tasks ahead. And — that encompasses the many chores attendant to gardening. It is important to put the "spade work" in as early as possible. Speaking of spade work, chores will go faster and easier

with the proper tools at your command.

Some of the most important implements for spring gardening are long-handled shovels, hoes and spading forks.

Down-to-the-earth hand tools are trowels for general garden work, transplanting trowels, cultivators for weeding, mulching and cultivating. Multi-tined garden forks make it easier to break the sod before transplanting.

For reviving old lawns or putting in new ones, such labor-saving devices as seed and fertilizer spreaders, handy carts or wheelbarrows come in handy.

Such "growth promoters" as bone meal for bulbs... lime for lawns, peat moss, humus, rose foods, soil conditioners and root feeders are designed for specific purposes and should be used only upon qualified advice from nurseryman or garden expert.

Assorted pest sprays and easy-to-use sprayers help keep a garden growing well.

For hedges and light pruning tasks, there are available a wide variety of shears and clippers in electric and hand-operated types.

To keep lawns in a good condition, select from fine power or manual-type mowers, edgers and trimmers—many of them designed for either multi-purposes or specific tasks.

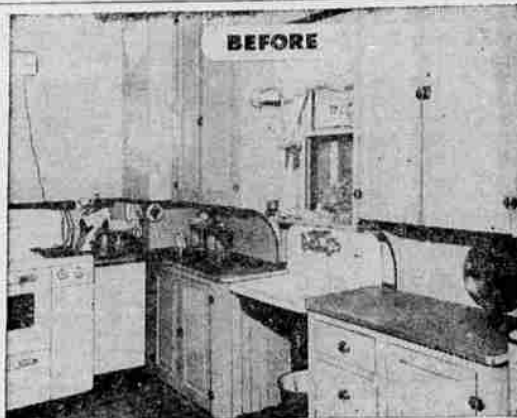
Plenty of garden hose and sprinklers for watering... plenty of "elbow grease" and application—these too—are important necessities to a more beautiful home garden.

Do Many Home Fix-Up Jobs With Caulking Compound

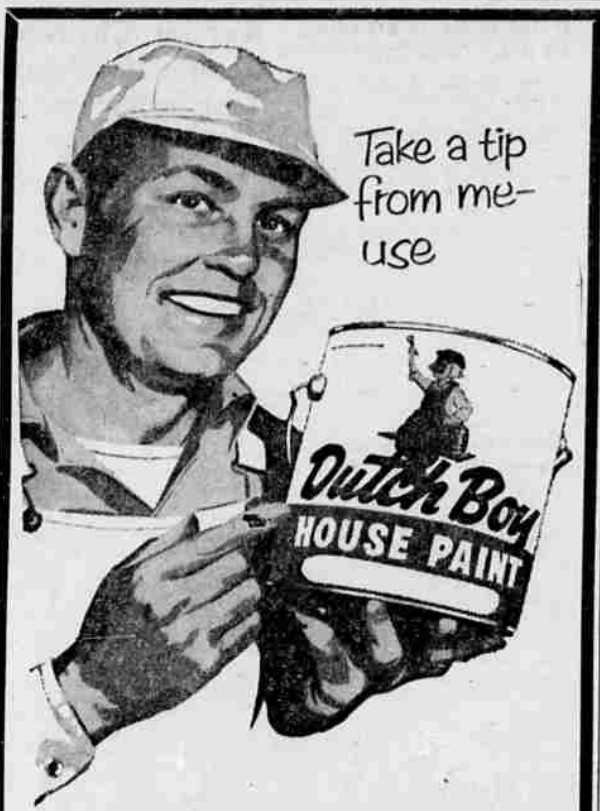
Caulking is another continuous need well worth the effort on older homes. Use of a caulking gun, an inexpensive implement every homeowner should have, is the easiest way to fill cracks around window and door frames, between siding and chimneys, around flashing, for repointing masonry and any other place where swelling and shrinking of wood has left caulking takes the place of flashing on upkeep and repair jobs.

Caulking compound also is a valuable aid for jobs inside the house, such as around bathtubs, shower stalls and tiles. Its water-proofing quality makes it a successful agent for any task involving moisture.

It can be used for minor cracks in the basement, but leaking basement walls usually require more extensive repair.



BEFORE REMODELING, this kitchen had a tiny, old-fashioned sink with out-dated base cabinets that provided a bare minimum of storage and counter work space. Although the range was new, the area surrounding it was entirely wasted. After remodeling - steel kitchen cabinets and steel cabinet sink give the room plenty of handy storage room that provide ample space for kitchen equipment plus ample work surfaces with new durable plastic counter tops.



Take a tip from me—use

Dutch Boy Paints
REG. U. S. PAT. OFF.

Home Improvement **STARTS RIGHT HERE**

- at Dutch Boy headquarters!

We're proud to display this sign that identifies our store as Dutch Boy headquarters... and you'll be proud of your home when you protect and beautify it with famous Dutch Boy paints and finishes! Remember, there's a top-quality Dutch Boy product for every painting problem—inside your home or out. It will pay you, to make our store—the Dutch Boy store—your first stop whenever you plan to paint!



BUY WHERE YOU SHARE IN THE SAVINGS

Phone OR 2-2683
W. Washington at S.P. Track
Roseburg, Oregon



FREE PARKING AT THE FARM BUREAU

SAVE 50% OR MORE

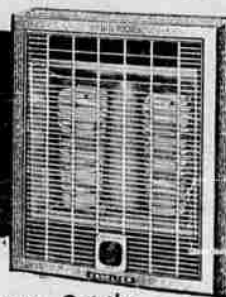
WITH DEPENDABLE, TROUBLE-FREE

Cavalier® AUTOMATIC ELECTRIC HEATERS



TOPS IN EFFICIENCY!

Some types of electric heating devices are made in only one size, one style. Installations of this type require many extra heating units, and extra wall space, and installation costs soar. Cavalier frequently offers dramatic savings because Cavalier has a type for every need and sizes from 1 KW (for small rooms) to 8 KW (for large areas).



Get Cavalier installed cost before you buy. Compare. Get the facts including proof that **NO ELECTRIC HEATING DEVICE OF ANY TYPE CAN DELIVER MORE HEAT PER ENERGY INPUT THAN CAVALIER.**

CAVALIER QUALITY SINCE 1865

For free heating survey and estimate call:

Trowbridge ELECTRIC CO.

622 S. E.
JACKSON ST.
OR 3-5521