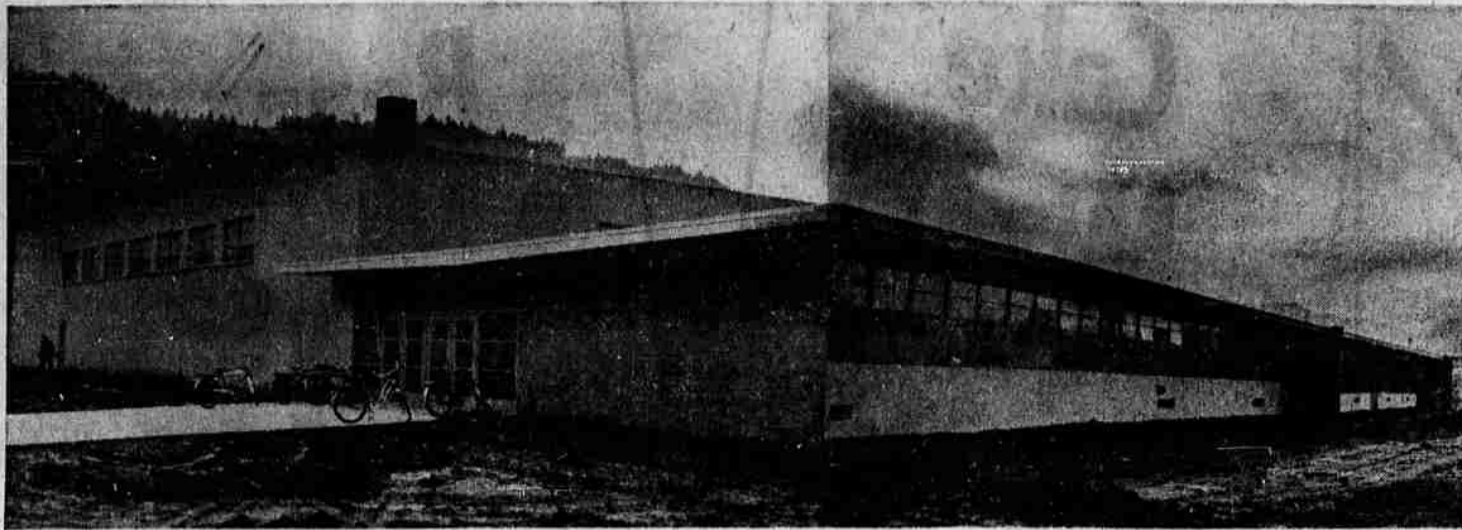


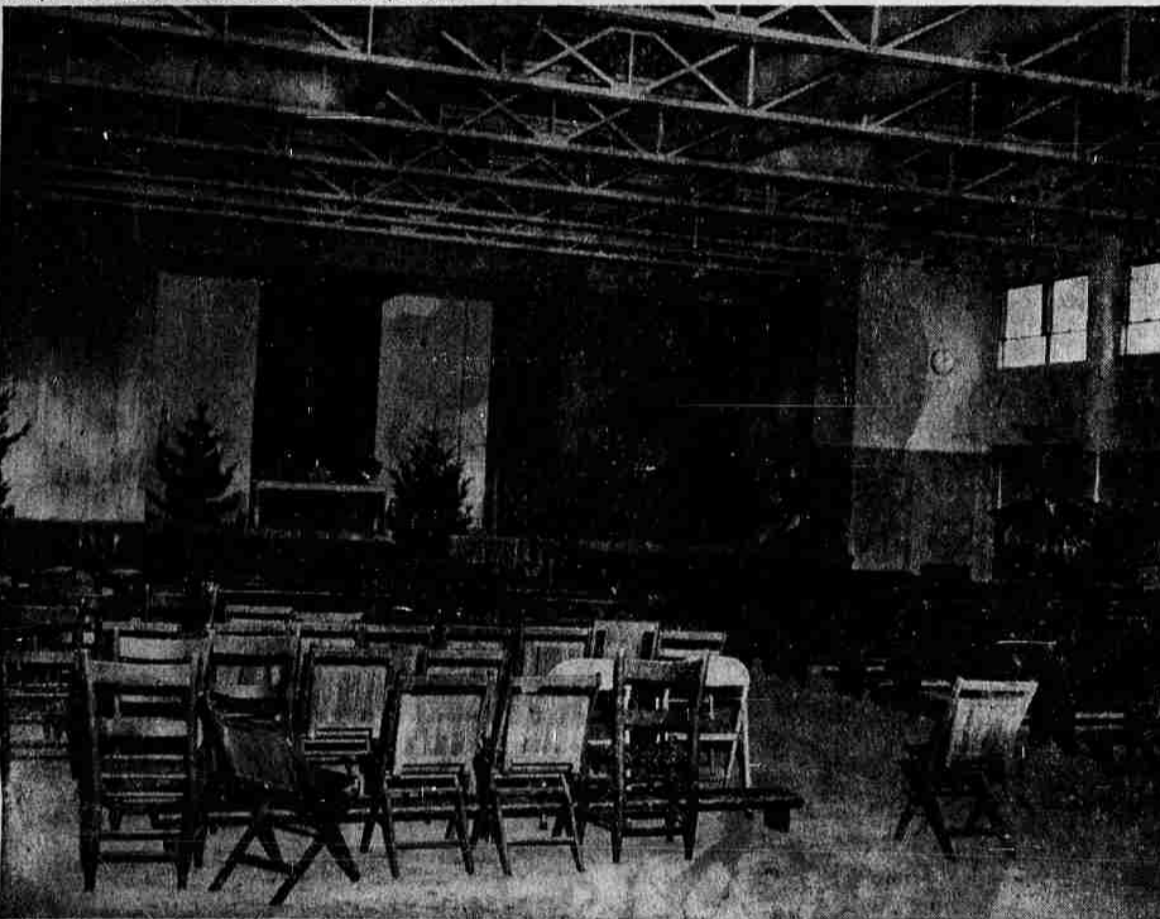
St. Joseph's West Roseburg Center Opens School-Church Doors



DOUGLAS COUNTY'S NEWEST SCHOOL ADDITION opened its doors to approximately 150 students Jan. 5. Youngsters from grades one through eight are now attending classes in St. Joseph's Catholic Grade School. School personnel

said the building would accommodate around 300 students when it is in full operation in September. Additional instructors will be added to the current staff of four. The shiny, reinforced concrete and

brick building contains nine rooms, office spaces, multipurpose room (left), library and lavatories. The classrooms face both north and south. (All photos on this page by Paul Jenkins).



MULTIPURPOSE ROOM OF THE church-school center is now used for church services for the parish members and as a gymnasium for school students. Father Hyland, pastor of St. Joseph's Parish, said the new church would be completed as soon as possible. The sanctuary in the new build-

ing is shut off completely during the week. The temporary church quarters are about four times as large as those available in the former church on Kane Street. Some 800 persons can be seated in the room.

Catholic School In West Roseburg To Serve 300

By LAURA OLSON
Staff Writer, News Review

Some 150 boys and girls entered brand-spanking new school classrooms last week.

They constituted the first members in the eight classes, grades 1 through 8, of St. Joseph's School in West Roseburg. The \$330,000 building was the initial phase of a Catholic Center which will be constructed on seven acres of ground on Stanton Street at Harvard Avenue.

Parish activities until recently centered on the land which houses the old school and church since its purchase by the parish Aug. 17, 1956. St. Joseph's Church was built around 1906, according to Fr. Edmond Hyland, pastor of St. Joseph's Parish.

A wooden frame building served the parishioners until 1906. It was in that year that the recently-vacated St. Joseph's Church was built.

Today, the new school building is serving a dual purpose. Until the planned church is constructed, St. Joseph's parishioners will attend church services conducted in the school's multipurpose room. Next fall, when the school is no longer the newest in the county, some 300 students are expected to be attending classes. The expanded enrollment means an enlarged teaching staff.

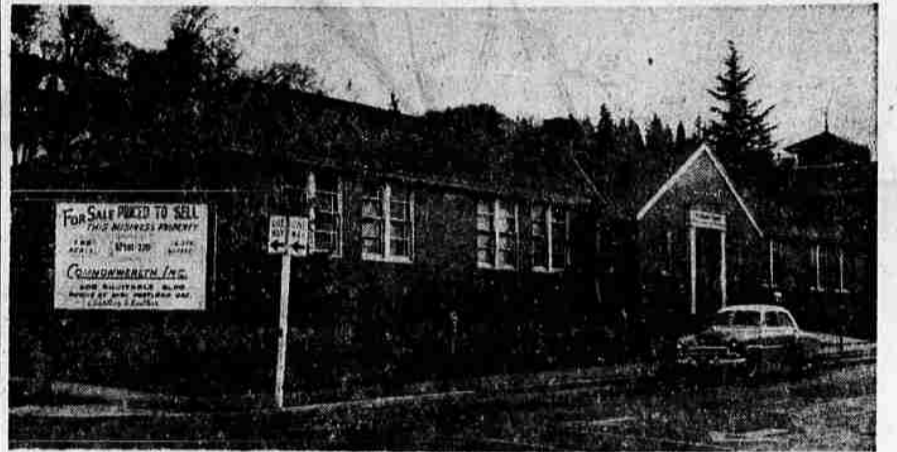
Construction work on St. Joseph's school was handled by the Henry Mason Co. of Portland. Much of the subcontracting was handled locally.

Landscaping of the school grounds will get underway when weather permits, according to Fr. Hyland.

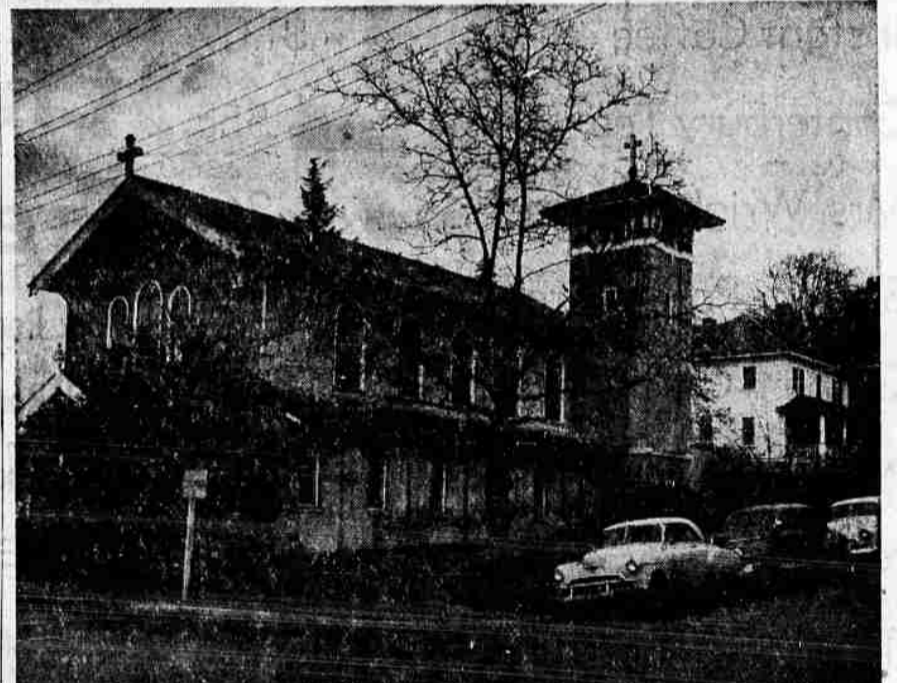
Meanwhile, students were too busy getting acquainted with their new institution to worry much about grass.



READIN' 'N WRITIN' 'N RITHMETIC—Students at St. Joseph's School were really concentrating when News-Review Photographer Paul Jenkins caught them in the middle of a class period.



IT'S AWFULY QUIET AROUND Kane and Oak Streets this week. The students who formerly attended the old St. Joseph's Parochial School are now going to their classes in the building in Roseburg's west side. The entire block where the school and church are located is for sale along with the buildings on the grounds, according to Fr. Edmond Hyland, pastor of the parish.



AFTER NEARLY 50 YEARS OF WORTHY SERVICE, St. Joseph's Catholic Church on Kane and Oak Streets has been outgrown by its parish. Until the building and land on which it stands are sold, the church will be used as a building for youth work. St. Joseph's School is also being used for the same purpose.

Year Closes With Auto Production Over 5 1/2 Million;

By Harry Elliott News Service

The year closed with car production totaling 5,508,075 and 1,024,166 trucks. It was the third highest car output year in history, but only the eighth highest year for trucks.

The Big Three accounted for 93.9 per cent of the total, a new record. It was 91.1 per cent in 1953.

General Motors built 32.2 per cent; Ford Motor 30.6 per cent, Chrysler Corp. 13.1 per cent. It was the first year in which GM passed the 50 per cent mark.

In December Ford snatched all postwar monthly production records, according to Automotive News, but did not overtake Chevrolet for the year's output lead. Chevrolet topped Ford by 19,629 cars. The difference in 1953 was 233,112.

ersfield, Berkeley, El Centro, Emeryville, Fresno, Long Beach, Los Angeles, Marysville, Oakland, Pasadena, Sacramento, San Bernardino, San Diego, San Francisco, San Jose, Santa Ana, South Gate, Stockton and Van Nuys.

Good Vision Needed
About ninety per cent of all the

actions a driver must take are based on messages received through his eyes, according to the California State Automobile Association.

Persons having normal vision by daylight are not always able to see equally at night. Resistance to glare decreases with age, too. Good vision is imperative!

Detroit Notes
It looks like the new car sales momentum gathered in December will continue through January. A record may be set. — Expressions of optimism for 1955 continue, but few forecasters are going beyond the current year. Henry Ford II, predicting a moderate upturn in business generally, said, "We intend to demonstrate more effectively than ever the thoroughness with which, for almost a decade, the men and women of Ford Motor Company have prepared for the return of really competitive conditions in the automobile industry." — Cadillac closed the year with an all-time high production record. More than 127,700 cars rolled off the assembly lines in 1954. Cadillac production has increased each year since World War II — Chrysler division has announced plans to increase production by 40 per cent. A multi-million dollar new manufacturing plant will be added, in Detroit.

Johnson Says Reports Allege Intimidation

WASHINGTON (AP) — Sen. Johnston (D-Sc) said Wednesday he is getting daily reports alleging "intimidation" tactics against federal workers protected by civil service.

He said he will order an investigation. Sen. Monroney (D-Okla.) a member of the Senate Civil Service in the new Congress, said in a separate interview the reports can be counted "in the hundreds."

Monroney said he will ask Johnson to assign a special subcommittee to conduct this inquiry, independently of another investigation Johnston has ordered into the workings of the government's security risk program.

Johnston has not yet announced just how the two probes will be handled, but he said both fields need thorough investigation.

"We are getting letters every day," the South Carolina senator said, "reporting attempted intimidation to induce people to resign" from jobs which are under civil service protection. He declined to give details.

Educational Conference Scheduled At Ashland

A regional conference on teacher education and professional standards devoted to the theme of "Professional Standards for Better Education" is to be held at Southern Oregon College in Ashland on Feb. 25 and 26.

Sheldrick A. Kendrick, Director of Publications of the National Commission on Teacher Education and Professional Standards of the National Education Association will be the principal speaker for the event said Mrs. Marcia Mills, consultant, Oregon Education Assn.

The region covers Douglas, Josephine, Jackson, Klamath and Lake counties in Oregon and areas of Siskiyou and Modoc counties in California.

U. S., Britain Reject Protests From Russians

WASHINGTON (AP) — The United States and Britain Tuesday rejected Russian protests to the effect that U.S. bombing planes stationed in Britain are intended for atomic attack on the Soviet Union.

Notes from the two Western governments accused Russia of quoting "out of context" some remarks made in mid-December by Gen. John D. Stevenson, commander of the 49th Air Division which is stationed in Britain. The division is a part of the North Atlantic Treaty Command.

Stevenson had said in his talk, according to officials here, that the planes in his division had the mission of providing the core of retaliation which would help deter the Russians from attacking Western Europe. These planes, he said, could drop bombs on the Soviet Union in a moments notice.

The Russians protested to London and Washington that this disclosed aggressive intent on the part of the United States forces.

In a note delivered to the Soviet Embassy Tuesday, and made public by the State Department, the United States said Stevenson had emphasized "the completely defensive nature" of the forces under his command.

Three Roseburg Students Make Outstanding Grades

Three Roseburg students have been recognized for their outstanding scholarship by being listed on the fall term scholastic honor roll at Oregon State College.

They were: Jamie France, sophomore in agriculture; Floyd Lewis, senior in engineering; and Norman Queen, senior in engineering. They earned grade averages of 3.5 points or better, based on "A" being equivalent to 4 points.

Last New Model Announcements

The independents wound up the new model announcements this past week.

Nash showed its Ambassador and Statesman series '55 Ramblers were introduced earlier. Packard revealed its complete new lines: Hudson's Hornets and Wasps are now out and Kaiser-Willys has unveiled its new models, the Henry J line having been discontinued.

American Motors (Nash and Hudson), Packard and Willys are now in production of '55 models. The 1955 Kaiser is not yet in production.

Standard License Mounts in '57

The automotive industry is scheduling introduction of standard license plate mountings for 1957, Association reports in Automobile Facts.

Assurances from enough U. S. and Canadian jurisdictions have been received to warrant this scheduling, with 50 of the 53 North American jurisdictions giving formal assurance of approval by 1957 at the latest. Eighty per cent of current vehicle registrations are contained in these 30 jurisdictions.

The licenses will fit the standard 6 by 12-inch standard plate recommended by the American Association of Motor Vehicle Administrators.

Expansion in California

General Motors now has assembly plants, manufacturing or branch-office operations in 22 California communities.

During 1954 Delco-Remy Division completed construction of the automobile storage battery plant at Anaheim and the construction of two GM Training Centers were completed at Burbank and San Leandro. The San Leandro training center was formally opened last week.

Other communities with GM operations in California are at Bak-

Roseburg School Buses Carry Parochial Students

About 50 Catholic children, students in St. Joseph's School, now are making use of the Roseburg school bus system in riding to school.

Luther Ellison, operator of the Ellison Transportation Co., school bus contractor, said 40 of the children ride each morning between Central Junior High School and the parochial school, located near Melrose Road in West Roseburg, and 10 more come from the Wilbur-Winchester area.

Use of the bus system is authorized in state school regulations, which say local school boards are obligated to transport students in private and parochial schools when the schools are on or near a regular bus route.

Most of the 40 riding between the junior high school and St. Joseph's School walk to the junior high which say local school boards are obligated to transport students in private and parochial schools when the schools are on or near a regular bus route.

GRANTS SLATED
The University of Oregon school of journalism at Eugene announces a new scholarship program which will enable deserving and qualified high school seniors to study journalism in the university.

According to Gordon A. Sabine, dean of the journalism school, four students will receive \$300 four-year scholarships next fall.

Everyone loves these lively Arts!
Every Monday through Friday, enjoy...

ARTHUR GODFREY TIME
1:00-2:30 pm



ART LINKLETTER'S HOUSE PARTY
12:45-1:00 pm
Dial 1490



KRRR
CBS Radio

WE WILL BE CLOSED

THURS. JAN. 13 after 4 p.m.
ALL DAY FRIDAY

JANUARY 14
TO ALLOW ALL OUR EMPLOYEES TO ATTEND THE PORTLAND FRIGIDAIRE CONVENTION

Umpqua Valley APPLIANCE

ROSEBURG—114 N. ROSE ST.—DIAL 3-5374
SUTHERLIN—WEST CENTRAL—PHONE 2988

RENT



A COMPLETE FULL-SIZE ROYAL PORTABLE FOR ONLY

\$5 PER MONTH

First 3 months rental may be applied on purchase price if you desire.

KEN'S OFFICE EQUIPMENT

THOMAS ROEN, JR., Owner
631 S. Stephens St.
Phone 3-5456

IF YOUR PAPER HAS NOT ARRIVED BY 6:15 P.M. PHONE 2-2631