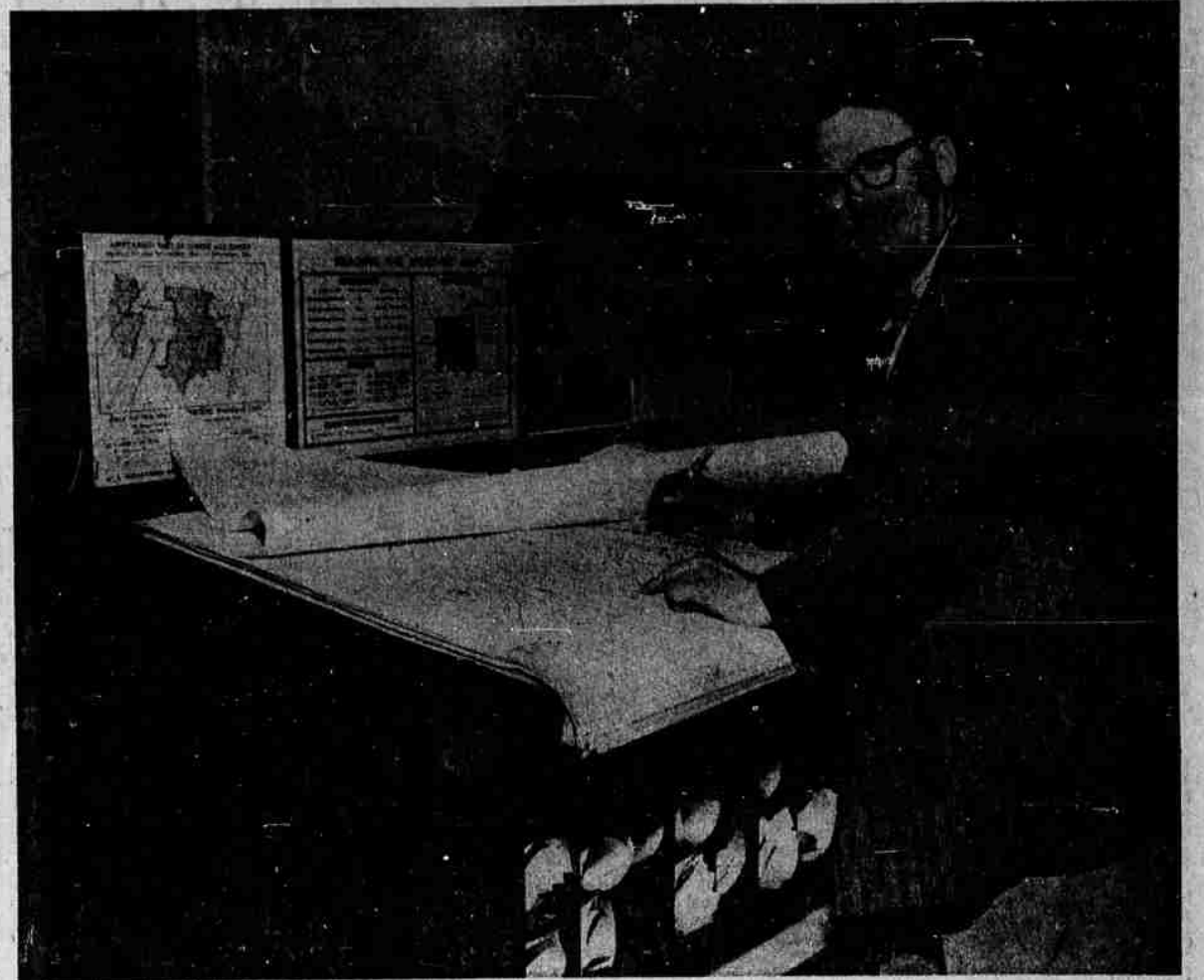
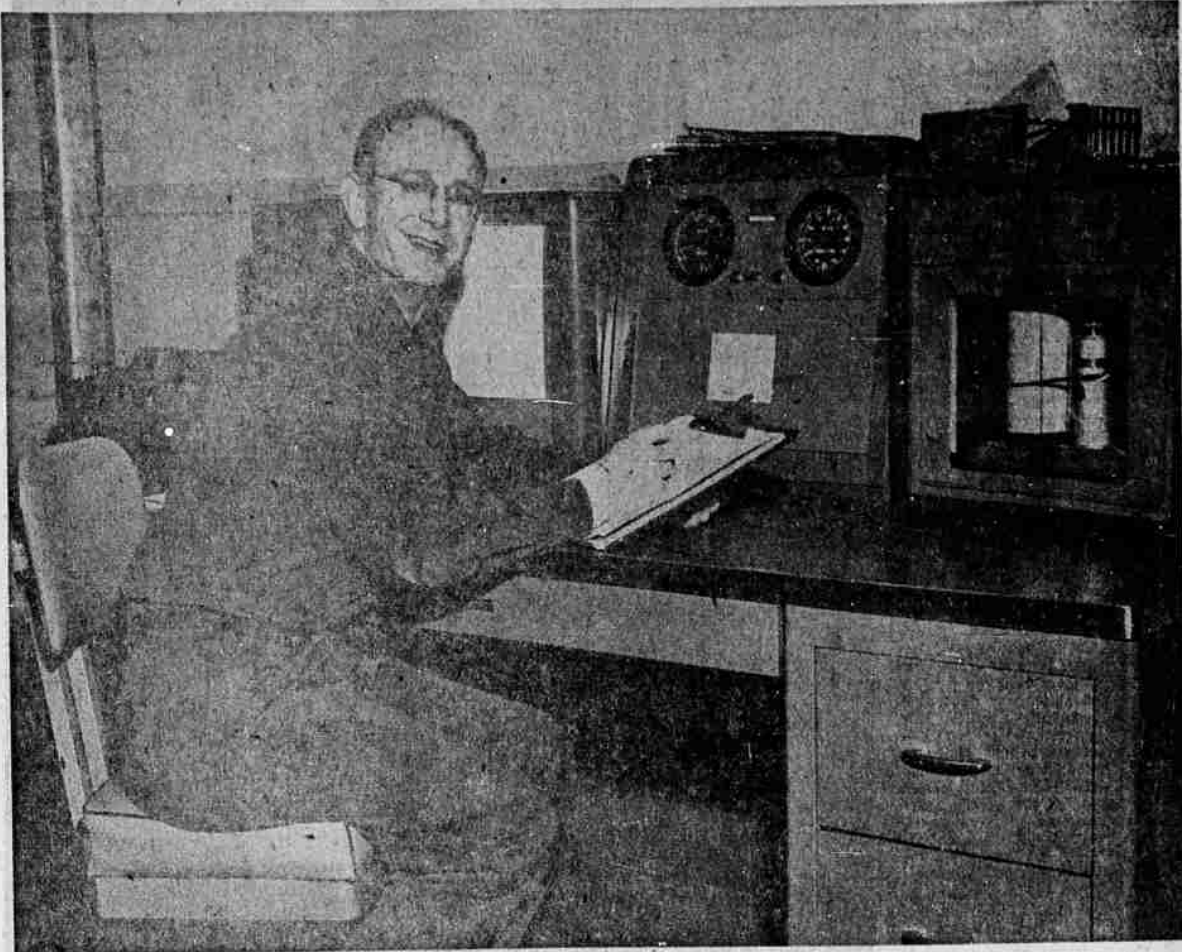


# HERE'S WHERE THEY REPORT LOCAL WEATHER



**HEAD MAN**, Mark Lander, above left, is meteorologist in charge of the Weather Bureau here. He has been with the Weather Bureau since 1945.



**LEONARD HEDINE**, who has been with the Weather Bureau since 1928, is meteorological aid. He is shown working on the 24-hour map made every day at the Weather Bureau.

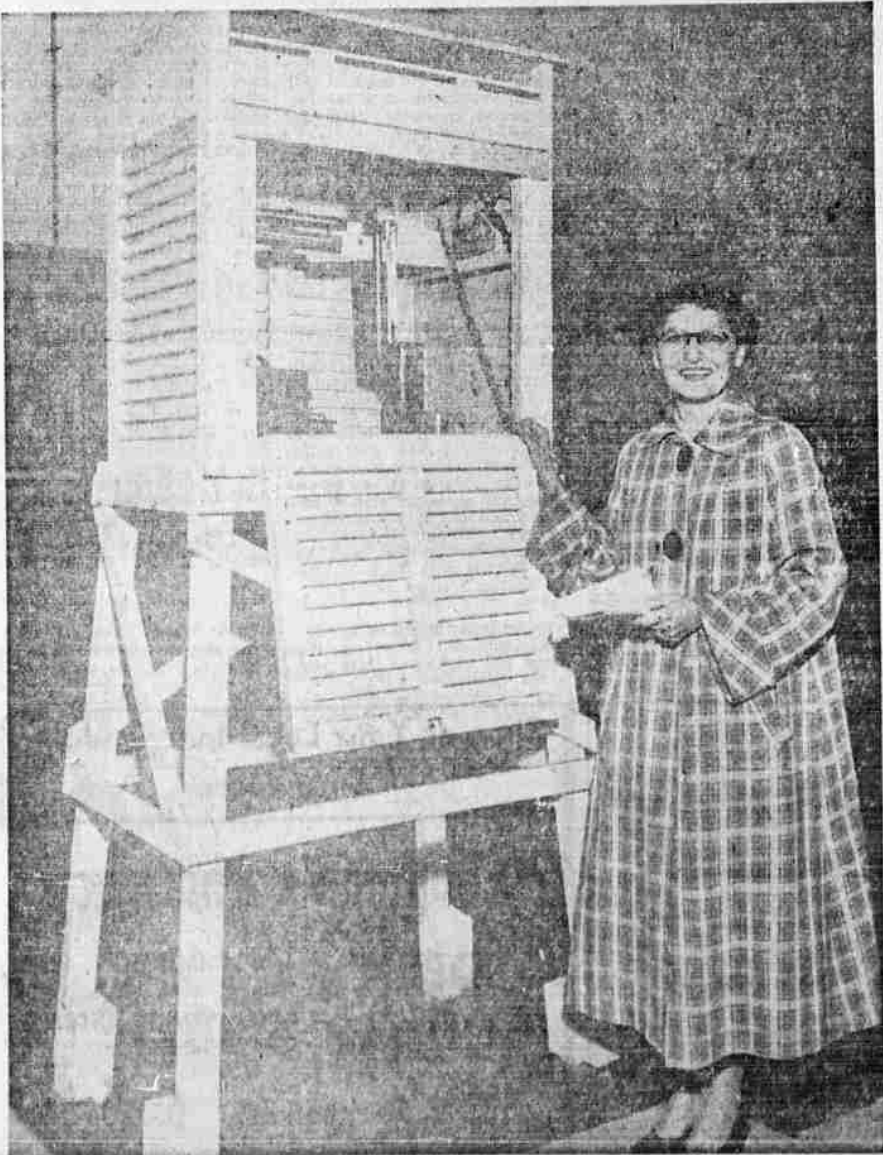
## Society

LOTUS KNIGHT PORTER

Sat., Jan. 8, 1955

—The News-Review, Roseburg, Ore. 5

All Pictures On This Page  
By "Chris" Of  
Fredrickson's Photo Lab



**MARK LANDER** and his two aides, Miss Betty Fretwell, who joined the Weather Bureau in 1942, and Leonard Hedine, are pictured above.

**AT REGULAR** intervals, Miss Fretwell, lower left picture, checks the weather and then puts her findings on the teletype, besides reading the information for radio broadcasts.

**AT THE RIGHT** is the photograph of the Weather Bureau department located next to the airport.

