

Douglas Electric Cooperative Inc.

Electric Power for the Farm, Home and Rural Industries

Phone 3-6616

Roseburg, Oregon

Pre-Mix Concrete, Inc., Has Supplied The Majority Of Concrete Used In This Area For The Major Construction Work

From a small beginning in 1943 this industry has made a remarkable growth — Today, one of the most modern plants in the Pacific Northwest is operated in Roseburg — Everything a contractor needs or wants can be supplied.

By R. KENNETH EVANS

Operating one of the most modern pre-mix concrete plants known to the industry, the Pre-Mix Concrete, Inc., 449 East Second Avenue South, Roseburg, has supplied the concrete for the majority of the major construction jobs in Roseburg's outstanding growth and expansion. The pre-mix concrete from this plant meets the rigid specifications set up by both the state and federal governments. The construction jobs, in the last few years, that have used pre-mix concrete processed by this industrial plant, include the Interstate Tractor and Equipment building, Howard-Cooper building, dry kiln of the Roseburg Lumber Company and Youngs Bay two lumber mills. Many bridges in the county are constructed from the pre-mix concrete as the base material includes the bridge south of Dillard, the large bridge on the highway between Coos Bay junction and Myrtle Point and much of the state work.

It is quite probable that very few people ever stop to consider how important properly pre-mixed concrete is to the advancement and progress of any community. Since the beginning of civilization, concrete has been an all important element. In the pre-historic days the same principles for which concrete is used today was applied by the Aztecs in the building of their homes and temples. The famous Chinese wall, portions of which are still standing, was bound together by elements similar to cement.

Concrete Is Close To People

Today, when one gets up in the morning he is usually in a house, apartment or hotel that stands on a concrete foundation. He walks along a concrete driveway to get his car out of the garage and drives to work over concrete paving. He parks his car against a concrete curbing, walks across a concrete sidewalk. Concrete, today, touches the lives of every man, woman and child in the nation.

It was not too many years ago that concrete was processed the hard way. With equipment consisting of a wooden mortar box, an ordinary garden hose, a wheelbarrow for transportation and a trowel constituted the necessary tools. The sand, gravel and cement were poured dry into the mortar box by guesswork. Usually a water-boy stood by pouring water into the mixture as the processor pushed it back and forth with the hose. The mixture was shoveled into the wheelbarrow and wheeled to the wooden forms. It was poured into these forms, just as it is placed today, and allowed to set until it was hard enough. This method was relegated and replaced by the concrete mixers which were turned by hand but, the mixing of the ingredients was still done in a haphazard manner. However, construction engineers, federal and state legislative requirements and the development of the pre-mix system have changed the method and procedures of mixing and supplying concrete. Out of this progress has grown the modern batch-mixing plant.

Quality Sand and Gravel Essential
Primarily, the quality of the sand and gravel used in pre-mix concrete controls, in a large measure, the quality and longevity of the product. In this respect the Pre-Mix Concrete Inc., uses sand and gravel that comes from deposits laid down thousands of years ago by the Umpqua river. This sand and gravel is taken from a deposit near Roseburg.

The Pre-Mix Concrete, Inc. is a corporation with Buckley Bell, president, Milo Bell, vice president and, Dixie Bell, secretary-treasurer. The original plant set-up December 1, 1943 was small and only had a capacity for mixing 50 or 60 yards of concrete. The first batch mixed was supplied to the Roseburg Lumber Company

and was used for setting poles for guy-wires.

The present batch-plant was built by the Pre-Mix Concrete, Inc., some six years ago and is automatic and adjustable to mix ingredients according to the specifications of any particular job. The controls of the bins containing the various ingredients and the scales for weighing, are operated by an "electric-eye", one of the latest developments in providing accuracy for the pre-mixing of concrete. The concrete mixture is air-entrained which means that air-bubbles are added to the concrete mix and the mixture moves on these tiny air-bubbles in place of water. This in turn improves workability and protects the product against the elements of the weather. This batch-plant has a capacity for automatically mixing, to federal and state specifications, 500 to 600 cubic yards of pre-mix concrete per shift.

There are five modern trucks maintained for the delivery of this pre-mix concrete in a radius of 15 to 25 miles of Roseburg. These trucks are equipped with an agitator to keep the pre-mix concrete in proper condition while being transported from the batch-plant to the construction site.

Service Is Paramount

Service has ever been a paramount principle in the operation of the Pre-Mix Concrete, Inc. This policy, coupled with quality products that have always been supplied, has been responsible for their enviable reputation. "Service comes first with us in all cases," states Buckley Bell, president and general manager. "We always know that our pre-mix concrete is of top quality and we back that quality with service."

There is an average of 30 local workers employed by Pre-Mix Concrete, Inc., which creates an annual substantial payroll averaging \$120-thousand dollars. These workers are well versed with the policies that are maintained and, the rigid principle of always processing quality products that will come up to the most rigid specifications.

In addition to supplying pre-mix concrete, the manufacturing of concrete pipe is a major part of the operation of this industrial plant. An ample stock pile — to meet any requirements — of all sizes of concrete pipe is maintained. Foundation blocks, pipe fittings, well curbing, man-hole covers and anything unusual that might be needed, can be manufactured at this plant. All concrete pipe is air-pressure tested to meet all specifications and requirements.

SAFE STORAGE

Is Assured When You Store Your Household Goods In Our FIRE SAFE WAREHOUSE

Flegel's take the same care of your furniture as you do. It is carefully packed in your home, before your own eyes, then stored with the best of care in our warehouse. Don't Make A Move Until You See...

FLEGEL TRANSFER and STORAGE COMPANY

900 East 3rd Street

Dial 3-4436

E K WOOD LUMBER CO.

ROSEBURG

OREGON

REMANUFACTURING PLANT—

WE BUY ROUGH LUMBER



INTERNATIONAL HARVESTER

SALES PARTS SERVICE
FARM IMPLEMENTS INTERNATIONAL TRUCKS

SIG FETT, Implements

527 North Jackson

Dial 3-4466



Dutch Boy Color Gallery ...

BRIGHT NEW MATCHING COLORS
Kitchen Bath Woodwork

Roseburg Color Center

329 North Main

Phone 3-5367

Chrystalite Tile Plant

3750 N. STEPHENS ... PHONE 3-3322

LITE-ROCK BUILDING BLOCKS
CONCRETE BLOCK SEPTIC TANKS

TRUCKERS! Check Your Brake Blocks Now! Be Ready When They Open The Woods To Logging

Wagner Brake Blocks Gunite Drums

Tire Service Company, Inc.

240 South Stephens

Phone 3-6348

Enjoy ...



Ice Cream

At Your Favorite Shopping Center

"The Favorite of Douglas County For Over A Quarter Of A Century"

SAVE TIME, MONEY AND LABOR

By Including Pre-Mix Concrete In Your Building Plans!

- Pre-Mix Concrete is mixed to exacting specifications to assure a finished product of high standards.
- It's poured right into your forms with a minimum of mess, work and time expenditure.
- Ideal for foundations, basements, driveways, retaining walls, sidewalks or any other concrete installation.

EQUIPMENT FOR RENT BY HOUR, DAY, WEEK Or MONTH

All Contractors' Needs Can Be Met

P & H 1/2 Yd. Shovel
D 8 Cat
LeTourneau Carryall
Hough Diesel 1 1/2 Yd. Loader

Ford Hydraulic Scoop and Ditch Digger
Compressors-Jackhammers
Pavement Breakers-Wagon Jack Tools

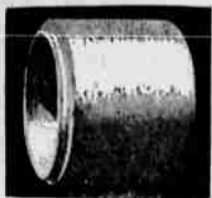
Concrete Buggies and Handling Equipment

PRE-MIX CONCRETE, INC.

449 E. 2nd. Ave. S.

P.O. Box 49 Roseburg, Ore.

Phone 2-2694



We Manufacture A Complete Line Of Concrete Products To Meet Your Building Needs.

- Sewer Pipe
- Drain Tile
- Culvert Pipe
- Fittings
- Stepping Stones
- Well Curbing
- Manhole Rings
- Catch Basins
- Grease Traps w/Lids
- Pier Foundation Blocks

And, Any Special Item Involving Concrete Can Be Made At Pre-Mix Concrete

--- ALSO IN STOCK ---

- Expansion Strips
- Reinforcing Steel
- Wire Mesh
- Form Tires
- Concrete Paint & Sealers

