

Society and Clubs

BPWC PICNIC AFFAIR IS ENJOYED AT BAKER HOME MONDAY NIGHT

The Business and Professional Women's Club members and their families and guests enjoyed the monthly summer picnic affair Monday evening at the beautiful home of Mrs. R. G. Baker on Harvard Avenue.

The picnic dinner was served on the large patio under the spreading walnut trees. Four tables, covered with blue and white checked cloths, and centered with tuberosis begonias and fuchsias were used. Large bouquets of gladioli decorated the out-door fireplace.

Present were: Mr. and Mrs. L. L. Powers and daughters, Cynthia Ann and Mary Judith; Molly Maddox, Arvilla M. Green, Vivian Pasmore, Flossie Virden, Gladys Foley, Midge Briggs, Helen Emery, Alvia Wetherell, Emily Judd, Edyth Gilmpre, Candy Collins, Vivian Logsdon, Michele Collins, Edna Keeling.

Laura Iles, Priscilla Clarenback, Lucy Clarenback, a guest; Minnie Clark, Donna Beham, a guest, Mr. and Mrs. Claude Baker and daughter, Betty; Mr. and Mrs. Clarence Landis, Lyman Skinner, Rachel Lehrback, Florence Klatt, Florence Stire, a guest; Hazel Smith, Mildred Herman, Mr. and Mrs. W. A. Gilchrist, Cleo Moats and Mr. and Mrs. Howard Marsh and son, Eddie, of Coquille. The Marsh family came to assist Mrs. Baker with the affair. Mrs. Marsh is the daughter of Mrs. Baker.

The Aug. 25 picnic supper will be held at the home of Mildred Herman.

ROTARY ANNS HOLD LUNCHEON MEETING AT HOTEL ROSE

Rotary Anns met at a 12 o'clock no-hostess luncheon Thursday at the Hotel Rose with Dorothy Wirak, president, conducting the session. Beside the president, those attending were: Elaine Nevue, Gladys Foley, Elsie Russell, Elizabeth Gilchrist, Cleo Hale, Dorothy Jacklin, Cy Fitzgerald, Marietta Powers, Verna Denton, Ruth Doty, Arlene Myers, Helen Tozer, Betty Muller, Mildred Horn, Ardeth Denton and Laura Iles.

New officers of Rotary Anns include: Dorothy Wirak, president; Dorthea Croft, vice president; Verna Denton, treasurer; Cy Fitzgerald, secretary; Arlene Myers, sergeant-at-arms; Laura Iles, publicity chairman, and Ruth Doty, project chairman.

The Rotary Anns will meet at a 12 o'clock no-hostess luncheon Aug. 28 at the Hotel Rose.

LOOKINGGLASS GRANGE TO HOLD PICNIC SUNDAY

Lookingglass Grange will hold a picnic at one o'clock Sunday, Aug. 10, at the Fred Schulze place. Members, their families and invited friends are asked to bring a basket lunch and enjoy the affair. Coffee will be furnished.

MEN OF THE MOOSE PLAN WEDNESDAY MEET

The Men of the Moose will meet Wednesday, August 6, at the Moose Hall at 8:15 p.m. All members are urged to attend.

BOARD OF MANAGERS OF OREGON CONGRESS TO BE HELD AUG. 7-8

Mrs. Roy E. Denman, Douglas County Council President, will attend the Aug. 7-8 meeting of the Board of Managers of the Oregon Congress of Parents and Teachers. Mrs. Kenneth Bushey, State Radio Chairman, will accompany her for the Aug 7th meeting.

Those attending will find the Congress headquarters moved to larger quarters on the fifth floor of the same building, where more ample space will make possible the seating of the 80-odd members of the board in one room.

This board, a state-wide group of elected officers and committee chairmen, meet three times a year, according to Mrs. Denman.

On the agenda will be the laying of plans for a year's program to be carried out through the 578 local associations within the State organization, and a general discussion of the schools of instruction to be conducted later in September, according to Mrs. Jennelle Moorhead, who is beginning the last year of her 3-year term as State President.

MELROSE FRIENDLY HOUR CLUB TO MEET TOMORROW

The Melrose Friendly Hour Club will meet at one p.m. Wednesday at the home of Mrs. Norma Senn. Mrs. Doris Kurt will have charge of the program.

All members are invited to attend.

JOLLY EIGHT CLUB TO HAVE WEEKLY MEETING

The Jolly Eight Club will meet Wednesday at the home of Pearl Shugart in the afternoon. This will be a lawn meeting to which all members are invited.

ROSEBURG A. AND E. CLUB TO HOLD MEETING

The Roseburg Art and Embroidery Club will meet Wednesday afternoon at the home of Mrs. Glenn Cox. All members are most cordially invited to attend.

MELROSE GRANGE TO MEET THIS EVENING

Melrose Grange will meet tonight, Aug. 5, at 8:30 o'clock at the hall. The host and hostess committee for the evening includes Mr. and Mrs. Ray Doerner and Mr. and Mrs. Charles Cring. Mrs. Trozie Nielsen will have charge of the entertainment. All members are urged to attend.

The average Argentine eats about 267 pounds of meat a year and the average Australian or New Zealander 245 pounds as against about 148 pounds for the average American.



MAKES A PITCHER FULL!
Kool-Aid
BUY 6 PKGS. SAVE!

back to school in color harmonics by Jantzen ★ back to school in color harmonics by Jantzen ★ back

Color Harmonics

Composed By *Jantzen*

Conducted By *Miller's*

Color Harmonics is something new. New subtle colors that make your wardrobe sing. New blending of color, new styles that are music to your eyes, and your budget. New Jantzen fabrics that are wonderfully soft, costly looking. Stop in at our Second floor Sportswear department and make your selections for your school wardrobe—soon.



© Jantzen



© JANTZEN



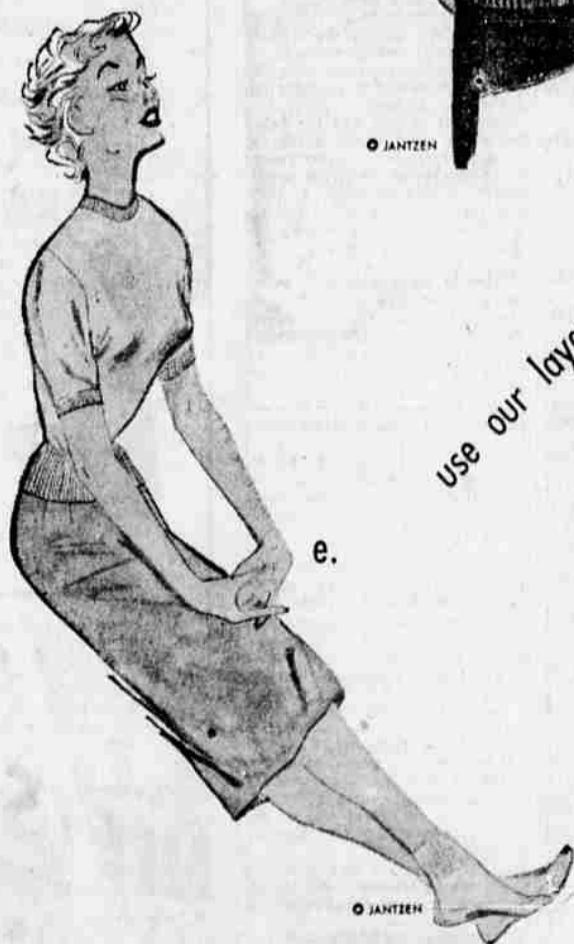
b.

© Jantzen



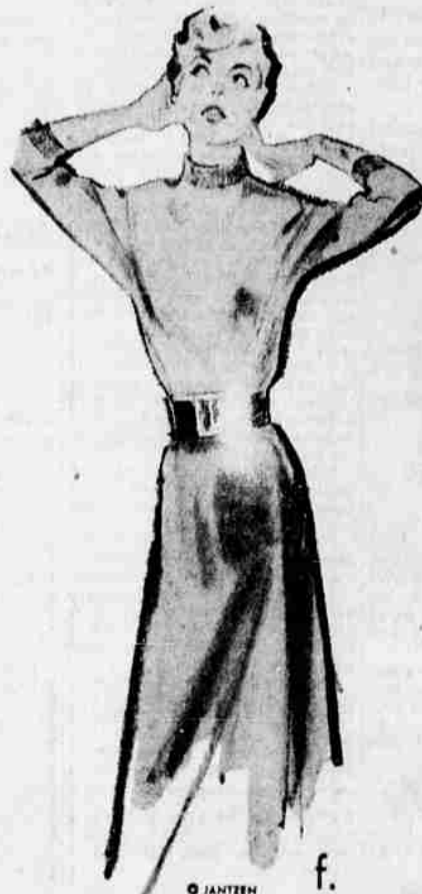
d.

© JANTZEN



e.

© JANTZEN



f.

© JANTZEN

c. FLIRTATION — Marvelous fit, marvelous fabric... it's your classic Jantzen Kharafleece pullover... Kharafleece being the Jantzen-exclusive sweater fabric that looks and feels like cashmere, washes easily and beautifully. Extra front fullness keeps the waistline even... the luxurious cashmere-type neckline is double-rolled... cuffs and waistband are fine-ribbed to stay snug. In harmonious Kharafleece colors to match or blend with Kharafleece skirts. 32-40. **9.95.**

b. DEMOISELLE — A beautiful Jantzen classic in fine gauge worsted wool, fashioned with attention to detail: smart ocean pearl buttons dyed to match, snug ribbing at cuffs and waistband, costly cashmere-type neckline, shoulder seams ribbon-reinforced. Wonderful new colors. 34-40. **7.95.**

c. TOPPER-SKIRT — Compose your own color harmonies in Jantzen Kharafleece — like this! Pick a stunning pullover... blend a versatile three-button vest... match the sweater with a slender-knit skirt which simply refuses to bag or sag. It's a marvelous new match-and-blend idea in separates, in a stunning muted color scale. Fabric is Jantzen-exclusive Kharafleece with a cloud-soft look and an affinity for soapuds. Vest, 32-40, **8.95.** Sweater, 32-40, **10.95.** Skirt, 10-18, **11.95.**

d. DATEMAKER-SWEATER SKIRT — You'll love the new look of this little Jantzen cardigan — its brief wing-sleeves and natural waist-length, its wonderful colors. They're Jantzen's color harmonics... a rich new color spectrum with subtle blends and perfect matches in a skirt like this one... knit to belittle you, and styled for turnabout wear. Both sweater and skirt in Jantzen-exclusive Kharafleece... the fabric that looks so soft and rich, and washes so beautifully. Sweater, 34-40, **11.95.** Skirt, 10-18, **11.95.**

e. LUCKY-SWEATER SKIRT — Your perfect Jantzen pullover, classic and ageless, with a costly cashmere-type neckline and softly fashioned arm-hugging sleeves. Have it in any of Jantzen's exquisite new harmonic colors... then match or blend it with Jantzen's wonderful turnabout Sweater Skirt... (wear it back side to, to distribute the wear) with a magical hemline that's a cinch to alter. Sweater, 32-40, **7.95.** Skirt, 10-18, **11.95.**

f. HONEYBUN WITH SWEATER SKIRT — Smash Jantzen success, with a new-for-'52 look... the marvelous new double-fold turtle neckline, the slightly longer three-quarter sleeve. Full-tailored for flattering fit from every angle and every curve... stunning with a slim-knit matching or blending skirt designed for turnabout wear. Both in cloud-soft Kharafleece that looks so rich, washes so well. Sweater, 32-40 **8.95.** Skirt, 10-18 **11.95.**

Here is a more effective medicated beauty treatment for your problem skin!



A night cream that will help soothe and dry blemished areas. A day lotion that does all that and serves as a powder base as well! Both in a neat set. \$2.75 (Medicated Cream \$1.50, Medicated Lotion \$1.25). All prices plus tax.

MEDICATED DUO

Charles of the Ritz

exclusively ours

Miller's

back to school in color harmonics by Jantzen ★ back to school in color harmonics by Jantzen ★ back