

# Lack Of Space, Facilities, Pay Bring Headaches To City Police



NIGHT PATROLMAN Meredith Freeman (left) takes call over police radio while Leif Hanson jots down notation on a police car's clip board or "hot sheet."



SANITARY FACILITIES at city jail afford little privacy and is subject of numerous complaints among prisoners.

## Prisoners Crowd Old Jail; Turnover Of Officers High

By KEN METZLER

It's tough to be a cop in Roseburg, and it's no picnic to be a criminal offender.

Lack of such basic police needs as fingerprint equipment handicaps the Roseburg force. But if they catch their man, he'll find jail isn't at all comfortable.

Overcrowded conditions are readily apparent when the weekend drunks and vagrants are stacked behind the iron bars. As many as 31 prisoners have been held in the jail — originally built for five. Women for whom there are no facilities, are lodged in the county jail.

That, and a lot of other things, are problems the Roseburg police force are faced with day after day.

Sometimes it makes officers want to quit their jobs in Roseburg and find employment elsewhere. Low pay, inadequate facilities and lack of space are the three major faults, officers say.

Such was the upshot of a recent discussion with the Roseburg department's night shift.

Only three men — Chief Ted Mazac, assistant Chief James McAlpine and Meter Maintenance Man Erwin Short — have been on the police force for more than one year. The rest of the constantly-changing department is brand new at Roseburg, though some officers have had considerable experience elsewhere.

**Job Becomes Likeable**

Most officers like police work. Despite low pay inconveniences and odd working hours, they'll tell you it gets in the blood to the point where they'd rather be a policeman than eat — well almost.

Through experience and training they soon come to be able to spot a drunk driver a mile away. He's either driving too slow, too fast or too erratically.

They can spot offenders and wanted subjects, too, often just by the subject's reaction to the sight of a uniformed officer.

Compared to other cities of similar size, the officers say, Roseburg is fortunate in having few major crimes. It does, however, have the usual quota of drunks, drunk drivers, "vags," and other petty offenders.

The patrolmen estimate that a good 90 per cent of the crimes here are the result of an aftermath of drinking. Included in this category are offenses like disorderly conduct, drunk driving, assault and battery, brawls and similar violations.

Sex offenses, rampant in many cities, are "unbelievably low" here in the opinion of the policemen.

But traffic tie-ups due largely to narrow, erratic streets, present a problem. Officers also state that street lighting in many of the city's residential areas is poor and conducive to prowling.

**Needed Items Listed**

But the main problem reverts to equipment. Sgt. Harry Clemons, in charge of the 4 to midnight shift, says an \$800 equipment allowance would take care of the basic "must have" articles.

These include such simple items as brooms and dustpans to sweep glass off streets after an accident; fingerprint equipment, a camera for taking evidence pictures, night sticks for each officer (there's only one in the entire department), tear gas for breaking disturbances and flushing subjects from buildings, flares, blankets, axes, measuring

tapes, gas masks—the list could go on for many paragraphs. The department has none of these items.

City Councilman Frank Ashley, chairman of the council's police commission, told The News-Review that \$800 didn't seem unreasonable.

Much of the problem and also the solution of the problem hinges on the city hall, built in the 1890's and condemned 25 years ago.

The police department has expanded since then but the building is as small as ever. As a result, space is at a premium, and simply doesn't exist for storage of equipment and evidence.

Furthermore, when some of the town's finest citizens are paying their overtime parking fines, officers' faces are rightfully red when they are forced to bring prisoners through the main office to the jail in the rear.

**Pay Scale Cited**

When an officer starts work at Roseburg he's required to buy his own uniform—a common practice for most small cities. He also must buy his own firearm, gun belt, handcuffs, ammunition—everything, in fact, except the badge which is provided by the city.

Rookie patrolmen start at \$285 per month and after six months are raised to \$300. That's where the raises stop. A sergeant gets \$315, assistant chief \$330 and chief \$350.

The Roseburg department consists of 14 persons, including Chief Mazac, Assistant Chief McAlpine, Meterman Short; three shift sergeants, Harry Clemons, Leif Hanson, and Vernon Murdoch; Clerk Catherine Clemons; Night Patrolman-Clerk Lester Hogan; and six patrolmen, Vernon Zimmerman, Joe Sulter, Meredith Freeman, Ed Katzmarek, John Brennan, and Carl Smith.

In addition to its usual role of arresting offenders, investigating crimes, and handling traffic, the police department provides information, handles messages, and returns lots of lost youngsters to their parents.

## Seattle Mayor Devin Defeated By Former Rival

By The Associated Press

Voters went to the polls in record numbers at municipal and other elections in cities and towns across Washington state Tuesday, with these main results:

Seattle elected a new mayor but rejected fluoridation, a thorny issue that had divided the city in the stormy pre-election campaign.

Tacoma named a retired police captain public safety commissioner replacing James Kerr, who resigned after a bitter dispute with the city council.

Everett apparently turned down Archie T. Van Winkle, Congressional Medal of Honor winner in his bid for a city council seat.

And Yakima voters handed Progressive Education a setback by supporting a school board majority involved in a controversy with the school administration.

Elections also were held in Bellingham, Aberdeen, Bremerton, Port Angeles and Renton, as well as 14 third class cities and 172 towns.

**Mayor Devin Unseated**

Approximately 155,000 votes—a record high for a municipal election—were cast in Seattle, where William F. Devin was unseated after 10 years as mayor.

Complete unofficial returns gave the office to Allen Pomeroy, 45-year-old attorney who was Devin's unsuccessful opponent in the mayoralty race four years ago. Pomeroy polled 78,602 votes to 75,292 for Devin. Some 3,000 absentee ballots remained to be counted but there

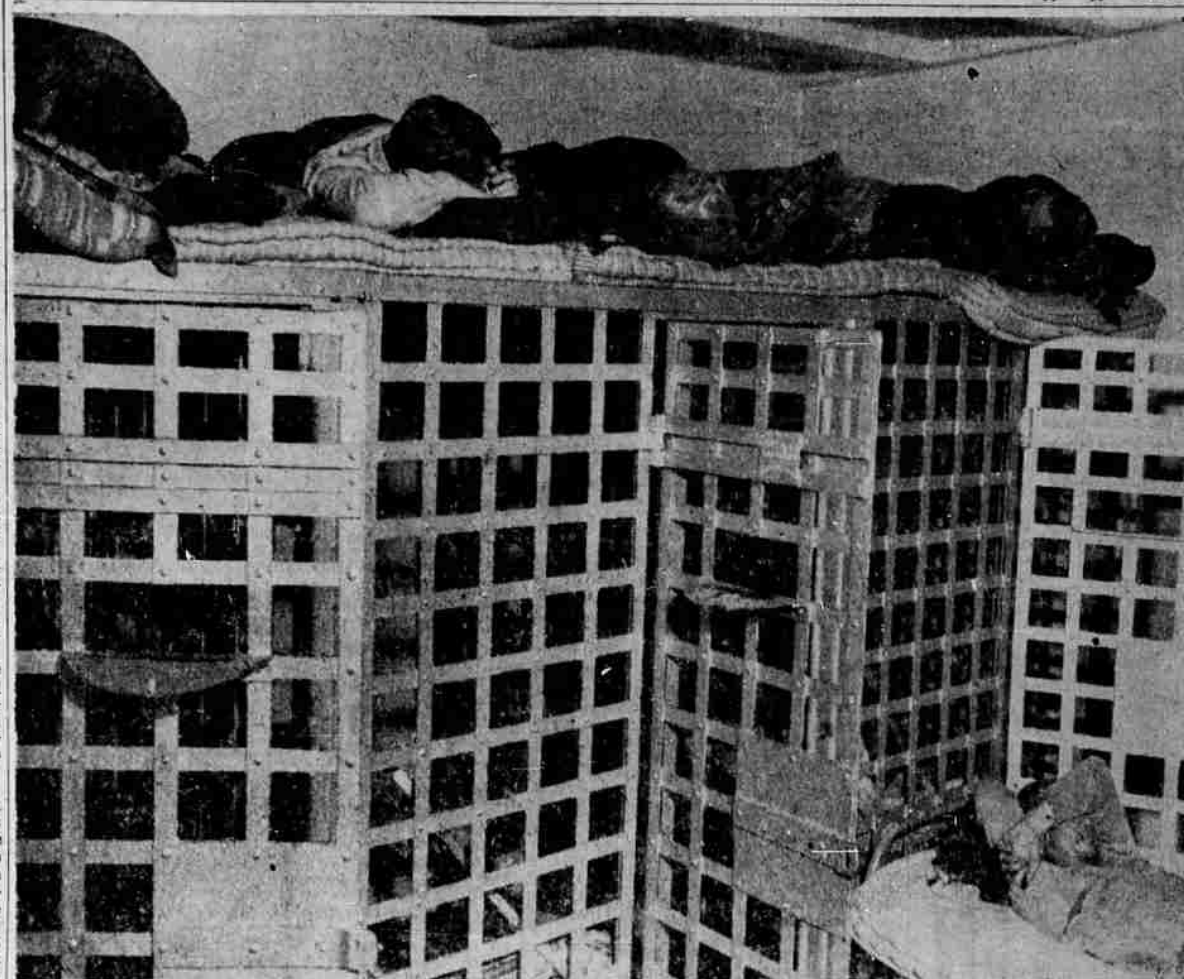
SECOND SECTION

The News-Review

Established 1873

ROSEBURG, OREGON—THURSDAY, MARCH 13, 1952

★ ★ 62-52

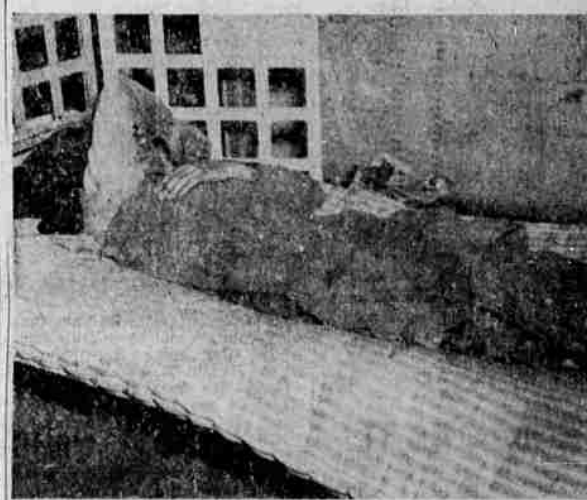


OVERCROWDED JAIL is routine to the city police force. On the night this picture was taken, 11 prisoners were lodged in the jail originally built to hold five. Extra prisoners are placed on top of cell block and on cots in front of

cell block. Record for city jail is 31 prisoners. Saturday nights usually see large number of prisoners, most of whom bail out by Sunday noon. (Staff pictures)



LACK OF BEDDING at city jail is illustrated by prisoner in picture at left who sandwiches himself between two mat-



resses while prisoner at right has only burlap sacks to keep him warm.

was little chance they would change the result.

Police Chief George Eastman was an incidental election casualty. Eastman, a Devin appointee, announced he will resign when Pomeroy takes office in June. During the campaign Pomeroy promised he would fire Eastman if elected.

**Bond Issue Carries**

Seattle voters reelected four incumbent city councilmen but turned thumbs down on fluoridation of the city's water supply. They also approved an eight million dollar school bond issue but a 1 1/2 million dollar library bond issue apparently lost because it lacked the required 60 per cent majority.

In Tacoma's heated race for public safety commissioner, William Farrar, a retired police captain held a better than two-to-one margin over Robert S. Tomme, onetime safety commissioner who once relieved Farrar as police chief.

## State T-B Hospital Enlargement Planned

SALEM (AP) — The State Board of Control announced Tuesday it would call for bids in two or three weeks on a \$719,000 addition to the State Tuberculosis Hospital in Salem.

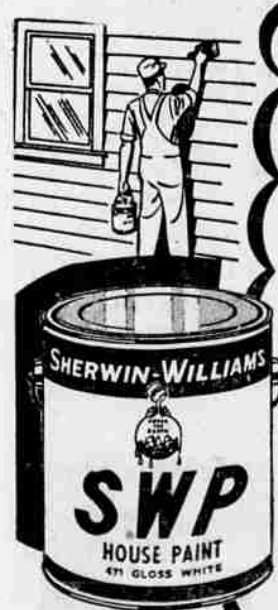
The project includes a \$264,000 employee dormitory and a \$455,000 addition to the hospital's main building.



COMPLAINT is received by phone by Sgt. Harry Clemons, sitting before department's radio transmitter. Patrolmen Carl Smith and John Brennan check back records on investigation. At upper left hangs the department's only night stick.

**JOBLESS FUND UPPED** — The Oregon Unemployment Compensation Commission's reserve fund gained \$2,200,000 the past year, despite higher benefit payments. The fund now totals 7 million dollars.

**DON'T BE FOOLED**  
when you buy house paint



**SHERWIN-WILLIAMS**  
**SWP HOUSE PAINT IS WEATHERATED\***  
for your protection AGAINST:

- Excessive Loss of Gloss
- High Dirt Collection
- Uncontrolled Chalking
- Checking and Cracking
- Rapid Erosion
- Color Fading
- Industrial Fumes† (special SWP for certain areas)

\*Every drop of SWP is tested for its ability to resist each of these types of deterioration before it is permitted to bear the Sherwin-Williams label.

ONLY \$6.05 PER GALLON IN 5's

**Umpqua Valley HARDWARE**

202 NORTH JACKSON PHONE 3-6628

**NOW!**  
NEW LOCATION



WE ARE NOW OPEN  
IN OUR NEW HOME  
AT 230 N. STEPHENS.

For all your plumbing needs see or call . . .

**KIER-CROOCH PLUMBING CO.**  
230 NORTH STEPHENS  
DIAL 3-5377

## NOTICE

WE WILL BE CLOSED FROM 2:00 P.M.,  
FRIDAY, MARCH 14th, UNTIL 7:00  
A.M., SATURDAY, MARCH 15th.

UMPQUA HOTEL COFFEE SHOP

IN PERSON

**ALVINO REY**  
AND HIS ORCHESTRA  
MARCH 15  
Saturday Night

**JOHN'S CURVE**  
3 Miles North of Myrtle Creek on Highway 99