

Sutherlin School Sets First Grade Registration

Registration for first grade children at Sutherlin grade school will take place Aug. 23, reports H. B. Austin, principal. The hours will be from 9 a.m. to 12 noon; 1 to 5 and 7 to 9 p.m.

Any child who will be entering

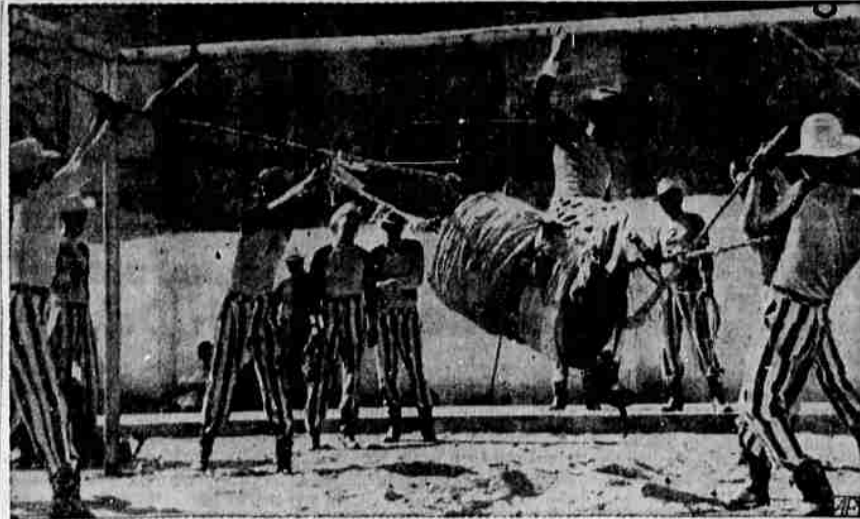
the first grade for the first time this fall is to register. He should have his birth certificate or baptismal record or other certificate denoting date of his birth. This will apply for both the children of Sutherlin city and Nonpareil schools, which are under the Sutherlin district jurisdiction.

Parents are advised to accompany their children. The county nurse will be present to conduct physical checkups. The parents will be informed as to the requirements for physical examinations.

Aged Methodists' Home May Be Constructed

PORTLAND — (AP) — Plans are underway here to build a home for aged Methodists who can afford to finance its construction. The plan, announced by a committee of Methodist clerical and lay leaders, calls for a \$5000 construction payment from each of the home's founders. The cost of life care is to be between \$8000 and \$12,000. Accommodations are planned for about 100 persons.

Dr. Edward Terry of Centenary-Wilbur Methodist church, said the project was needed because there are a number of homes for welfare recipients, "but few for those who can pay their way."



CONVICTS TUNE UP FOR RODEO Oklahoma State prison inmates don't have broncs to practice for their inside-the-wall rodeo (Sept. 6-9) at McAlester, Okla. So they have rigged up a barrel, saddled it and suspended it with chains from an iron trappe for their practice rides. (AP Wire-photo)

Teamsters Will Vote On P.F. & P Offer

PORTLAND — (AP) — Ten AFL teamsters' locals of Oregon and southwest Washington will vote on whether or not to accept terms of a new agreement reached with the Pacific Fruit and Produce company.

William O'Connell, union spokesman, said it called for a 10 per cent wage increase, a 30-day contract re-opening clause, an employer-financed welfare program and other benefits.

Locals affected are those of warehousemen and drivers in Eugene, Salem-Corvallis, Bend, Astoria, Coos Bay, The Dalles, Pendleton-Baker-La Grande, Klamath Falls and Medford-Roseburg, Ore., and Longview-Kelso, Wash.

Alleged Spies For U.S., Britain Sentenced To Die

LONDON — (AP) — A Romanian military court has sentenced four men to death and four others to long prison terms. They were convicted of treason and espionage on behalf of the United States and Britain.

The radio dispatch of the Romanian news agency, monitored here, said the four who were sentenced to death — one was formerly commander of Romania's air force — had confessed that they plotted to overthrow the Communist regime with the help of the two big Western powers.

The defense counsel appointed by the court had asked for leniency on the grounds that "the real cul-

prits were not the defendants but their masters in Wall street and London."

No Trace Found Of Plane Suspected Of Accident

Searchers have found no trace of a twin-engine plane which two loggers reported seeing skimming the treetops near Elkhead peak with one engine dead.

Deputy Sheriff Cecil Bever said Howard Maupin and Harry Ross, Drain loggers, reported they saw the plane fly over them Saturday about 200 feet high with one propeller stopped.

Bever and Hal Kress took two planes up to comb the area for about two hours but found no trace of a plane. A logging crew also searched on foot without finding anything.

A check with Civil Aeronautics administration offices in Eugene and Medford found no reports of missing aircraft.

Truman Renomination Sure, Sen. Douglas Thinks

WASHINGTON — (AP) — Senator Douglas (D-Ill.) thinks President Truman "is underneath the mistletoe" and "in a position to be kissed" — for reelection in 1952.

That's the way Douglas answered a reporter who asked if he thought Mr. Truman would be running again for the presidency.

The Illinois senator said he would not permit his own name to

be entered in the Illinois primary. He has stated publicly he will not be a candidate for the presidency.

Douglas reiterated his admiration for Gen. Dwight D. Eisenhower and said he'd like to see the general's name on both Republican and Democratic presidential tickets for the sake of national unity, in case President Truman does not seek another term.

Carriage bodies were mounted on steel springs around 1870, according to the National Geographic Society.

Magazine Has Articles By 2 CPU Employees

A. D. Parr, district manager, and Mrs. Nelle Cummings, chief clerk in the Roseburg office of the California - Pacific Utilities company, are authors of articles featured in the current issue of the company's monthly publication, "Safety Spots."

Manager Parr's contribution concerns individual responsibility in the safe handling of motorized equipment. Mrs. Cummings writes an interesting description of the Roseburg community and its growth, and personality sketches of the company's Roseburg employees.

Two New Suits Filed, Third One Dismissed

Inez Thompson, Yoncalla, Wednesday filed suit against James and Edna Jones to recover \$39,76 plus interest, allegedly due on a promissory note. Attorney's fees of \$100 are also asked. The state industrial accident commission has sued Albert Kepiro for \$429.07 and interest as unpaid employer contributions under the workmen's compensation act. Suit brought against Max and Jennett G. Steece by Edwin H. and Anabel L. Hanson was dismissed Wednesday by Circuit Judge Carl E. Wimberly on motion of the plaintiff.

Yugoslavia has six provinces, or "people's republics".

PRUDENTIAL LIFE
Insurance
HORACE C BERG
Special Agent
Office 3-7491 Res. 3-7193
111 West Oak

FOR . . .
SERVICE . . .
EXPERIENCE . . .
CO-OPERATION . . .

Investigate the services offered by your "Home-owned, Home-operated" bank. Money left on deposit with us remains in DOUGLAS COUNTY. All facilities available for your individual needs.

Douglas County State Bank
Member Federal Deposit Insurance Corp.

It's time for a "showdown" DEMONSTRATION of Tractor Values

To get more for your money in a tractor, get a "SHOWDOWN" Demonstration of Ferguson's ability to do a better job under the working conditions of your farm.

Ask Us for a FREE "Showdown" Demonstration on Your Farm Then You'll See WHY FERGUSON'S the BUY!

LEE MORTENSEN, Inc.
200 South Pine Dial 3-7534

COMPLETE SHOP SERVICE

IT'S TIME TO START THINKING About Your WINTER WOOD SUPPLY

We Can Give You IMMEDIATE DELIVERY

- ★ 16-INCH GREEN WOOD
- ★ PLANER ENDS

BUY NOW AND SAVE!

ROSEBURG LUMBER
WOOD SAWDUST HEAT FUEL
DIAL 3-5561

Support The Industry That Supports You!

come on in it's so COOL

Miller's

HAVE YOU TRIED NEW Williams' BREAD?

Now better than ever!

PREPARE FOR WINTER!

Freeze Foods Now..

in this Farm Size **FRIGIDAIRE** FOOD FREEZER!

Come in! See all these FEATURES!

All Frigidaire Food Freezers are powered by the **METER-MISER**

18 cu. ft. model Holds 630 lbs. Frozen Foods!

- famous for economical, dependable and trouble-free performance. Backed by 5-Year Warranty!
- Stylish by Raymond Lowry
- All-steel, sealed-tight cabinet
- Extra thick insulation on all sides, top and bottom
- Wrap-around refrigerating coils provide proper temperature all over
- Counter-balanced tops lift and lower like a feather
- Automatic interior light
- New latch with built-in lock
- Automatic Signal light
- Removable, sliding storage baskets
- Easy to clean and keep clean—inside and out

\$549.75 EASY TERMS
Also 9 and 12 cu. ft. models

15% DOWN — 18 MONTHS TO PAY
Your old appliance may count for all or part of your down payment.

Umpqua Valley APPLIANCE

Roseburg—120 W. Oak—Phone 3-7011 Sutherlin—Central & State St.—Phone 2988

Easiest driving ever!

TIME-PROVED POWERglide
AUTOMATIC TRANSMISSION

CHEVROLET

Just press the accelerator to GO . . . press the brake to STOP . . . It's the simplest, smoothest, safest driving you ever imagined!

It's the thrill of a lifetime—and the easiest way yet found to drive an automobile! Nothing in the low-price field compares with Chevrolet's wonderful Powerglide Automatic Transmission.

No clutch pedal. No gearshifting. Just touch the accelerator and off you go! It's the ultimate in velvet power and smooth-as-silk pick-up.

And Powerglide has been proved by more than 500,000 owners over a billion miles.

Take a "Discovery Drive" in a new Powerglide Chevrolet. See your Chevrolet dealer and see for yourself what a thrill it is to drive with Powerglide—the first and finest automatic transmission in the low-price field.

Take Your "DISCOVERY DRIVE"

More people buy Chevrolets than any other car!

*Combination of Powerglide Automatic Transmission and 105-h.p. Valve-in-Head Engine optional on De Luxe models at extra cost.

Chevrolet alone offers this complete Power Team!

- POWERglide Automatic Transmission***
Gives you simplest, smoothest, safest no-shift driving at lowest cost. No clutch pedal—no gearshifting—not even a hint of gear changes in forward driving!
- Extra-Powerful 105-h.p. Valve-in-Head Engine**
Powerglide is coupled with the most powerful engine in the low-price field—Chevrolet's extra-efficient 105-h.p. Valve-in-Head Engine—the trend leader for the industry.
- EconoMiser Rear Axle**
Rear wheels travel farther at each engine revolution . . . fewer engine revolutions and less gas at highway speed. Result: traditional Chevrolet economy in over-all driving.
- Oil Does It All!**
Oil replaces gears in the Powerglide Transmission. No direct mechanical connection between engine and rear axle. You have an infinite number of drive ratios.

HANSEN MOTOR CO.
Oak and Stephens
DIAL 3-4446