

USED CARS

CLEAN AND DEPENDABLE
 1930 Hillman Minx
 1930 Austins
 1930 6 Cylinder Jeepster, O. D.
 1930 Crosleys
 1941 Ford Super DeLuxe
GOOD TRANSPORTATION
\$50 AND UP

1935 Ford 2 Door
 1938 Chevrolet Coupe
 1836 Ford 4 Door
 1940 Studebaker Sedan
 1935 Ford Coupe Pickup
 1940 Hudson 2 Door
 1934 Plymouth 2 Door

We also have several used Crosleys priced right to sell.

We Service All Makes and Models

J. & M. MOTORS

SALES AND SERVICE
 1190 S. Stephens Dial 3-6596
 Hillman Minx Austin Dealers

SEWAGE DISPOSAL PLANT—In the layout above and to the far right can be observed four views of the recently completed sewage disposal plant for the North Roseburg Sanitary district.

Pictured directly to the right are Howard H. Harris, superintendent of the plant, and Clarence Landis, chairman of the sanitary district board of directors, as they discuss plant operation. Harris, a specialist in the operation of sewage disposal plants, arrived in Roseburg slightly more than two months ago to take over the plant here.

The picture at the top left gives an overall view of the plant with Merle Gors, right, News-Review reporter, interviewing Harris. The main building of the approximately \$132,000 layout is in the background. It houses a laboratory, another room and the floating digest cover tank (the rounded portion of the building on the right). In the foreground are the drying beds, and the round, concrete, manhole-like structure is a filter tank.

Picture at the top right gives a more detailed view of the filter tanks, which take impurities (in one stage of the process) from liquid wastes.

The drying beds are again shown in the second picture down on the



right, with Gors and Harris in the left foreground. Solid wastes are dried out in these beds and hauled away for use as fertilizer.

The primary settling tank of the plant is at the left in the picture at the lower right. Solids are separated from the liquids in the tank in an early part of the process. The similar structure on the right with the railing is the final settling tank, where any lingering impurities are settled after the liquid has run the gamut of the plant. After this stage, it is chlorinated and returned to the river. The little way station and walk to the background leads to two wells facing the river where wastes first enter the complex system. Capacity is rated at 500,000 gallons but can be stretched to 750,000 gallons, according to Harris. This services 1,800 persons, or about

one quarter of its potential capacity.

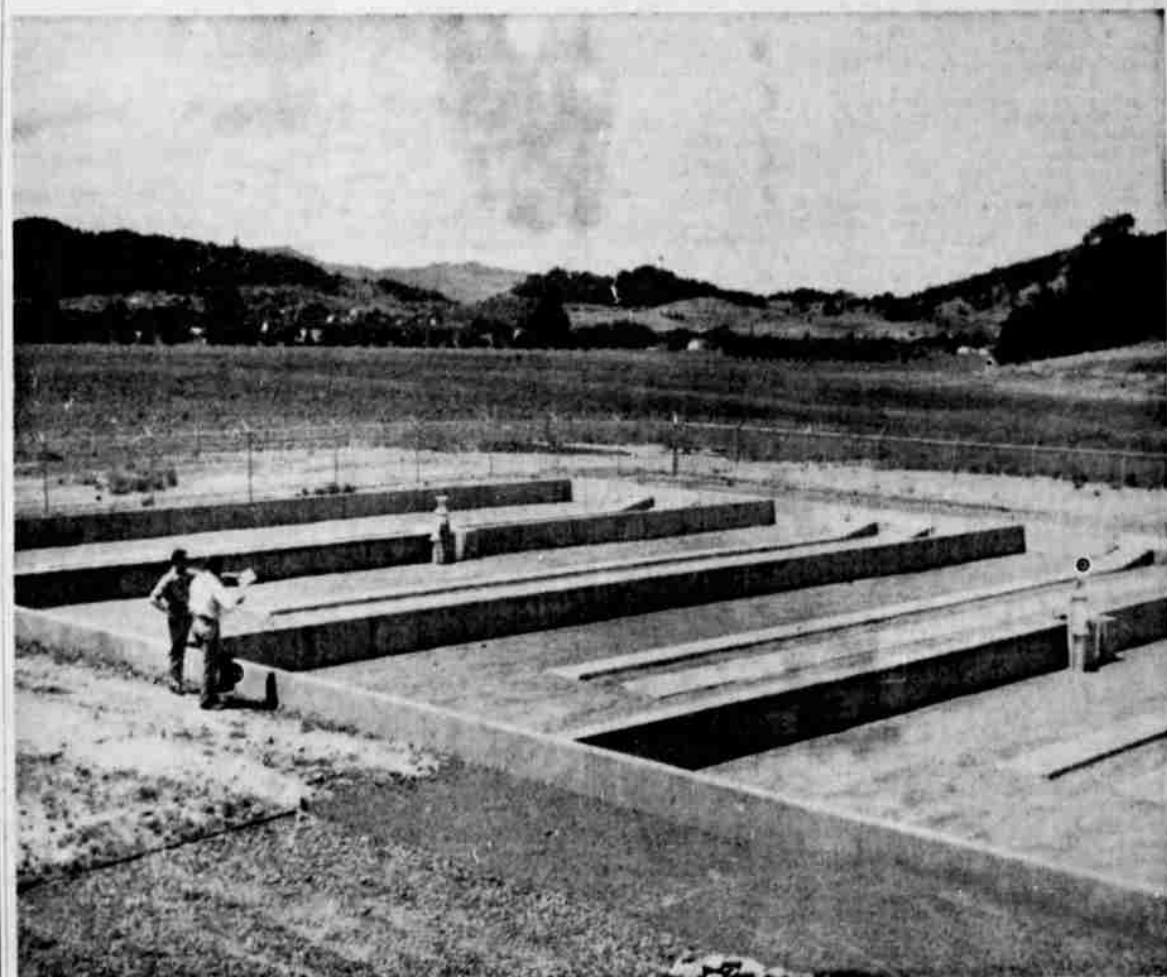
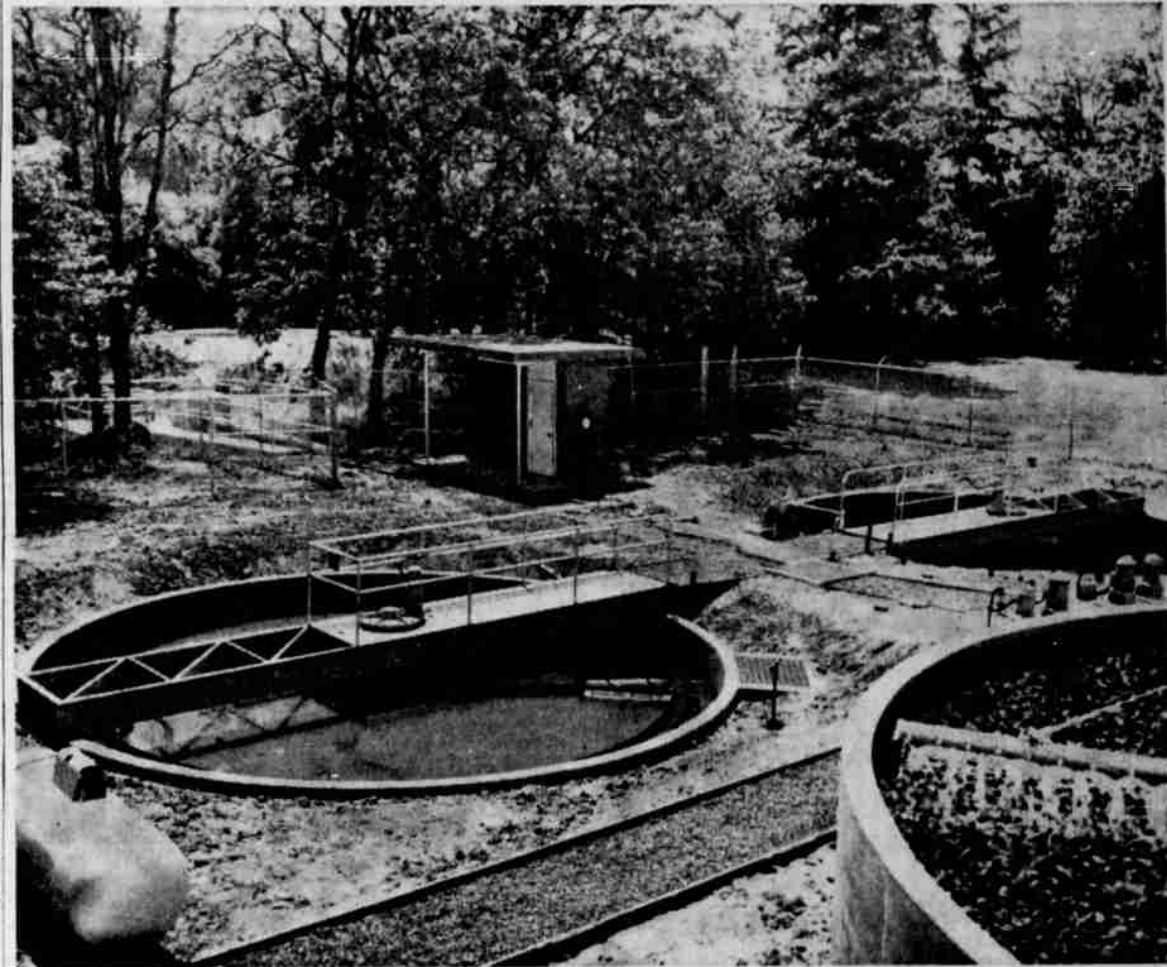
The addition of a heat exchanger would bring the plant to its full capacity. The plant is rated as one of the most up-to-date in the nation.

TONGUE STOPS BULLET

TOKYO — CP — PFC Eugene T. Lucas, Edwardsville, Pa., stopped a bullet with his tongue. Lucas was driving an anti-aircraft truck with the U. S. 7th infantry division in Korea. An enemy bullet went through the windshield, ricocheted from a metal bracket, creased Lucas' lip, chipped two front teeth and pushed up against his tongue.

Lucas shook his head and spat out the bullet.

Guayaquil is Ecuador's only port of consequence.



BERGH'S APPLIANCE SERVICE
AUTHORIZED SALES and SERVICE
 MAYTAG — WHIRLPOOL — DEXTER WASHERS
 MONARCH RANGES — IRONRITE IRONERS — ADMIRAL
 We Service All Makes of Home
 Laundries and Refrigeration
SEE US FOR RENTAL WASHERS AND REFRIGERATORS
 1200 S. Stephens Dial 3-8348

S-T-R-E-T-C-H-E-S your paint dollar!

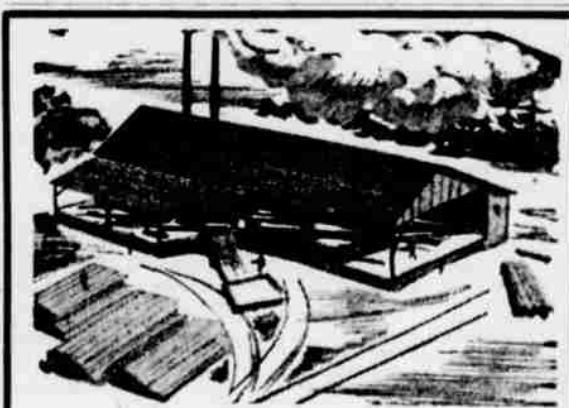
"Dutch Boy"
HOUSE PAINT

Specially BLENDED! Looks Better! Lasts Long!
In Sparkling Tints, In Snowy White



A gallon of DUTCH BOY covers 600 square feet! Goes on smoothly... white renews itself in the rain... dirt washes right off. Colors are blended to keep that new paint sparkle for years. Backed by 30 years of weather-testing. Choose DUTCH BOY, the quality, thrifty name in paint products.

Douglas County
FARM BUREAU COOPERATIVE EXCHANGE
 ROSEBURG, OREGON
 DIAL 3-5022
 Located—W. Washington st.



STOCK UP NOW!
 ★ GREEN WOOD
 ★ PLANER ENDS

50% Cheaper Than Other Fuels
 DOUBLE LOADS 16" GREEN WOOD
 SINGLE LOADS 16" GREEN WOOD
 DOUBLE LOADS 16" PLANER ENDS
 SINGLE LOADS 16" PLANER ENDS
 Also Available: Sawdust, 4-Ft. Greens and Dry
16-INCH DRY

WOOD SAWDUST HEAT FUEL
ROSEBURG LUMBER
 DIAL 3-5561