

Breed Of Steed

- HORIZONTAL 54 Pecunious 55 Monotonous 56 Weight of India 57 Vases... VERTICAL 1 Climbing pepper 2 Ascended 3 Tear 4 Exist 5 Small Island 6 Tissue 7 Source 8 Preposition 9 Negative word 10 Bullfighter 11 Strong vegetable 12 Daybreak (comb. form) 13 Cotton fabric 14 Merit 15 Not (prefix) 16 Backward 17 Symbol for tantalum 18 Type measure 19 And (Latin) 20 Three-toed sloth 21 Silkworm 22 Number 23 In addition 24 Elder son of Isaac (Bib.) 25 Parent 26 Cuddled 27 One key only (ab.) 28 Greek letter 29 Persian water wheel 30 Perish 31 Roman emperor 32 Afternoon social event

Answer to Previous Puzzle



- SERPENT HEAD 1 SERPENT HEAD 2 SERPENT HEAD 3 SERPENT HEAD 4 SERPENT HEAD 5 SERPENT HEAD 6 SERPENT HEAD 7 SERPENT HEAD 8 SERPENT HEAD 9 SERPENT HEAD 10 SERPENT HEAD 11 SERPENT HEAD 12 SERPENT HEAD 13 SERPENT HEAD 14 SERPENT HEAD 15 SERPENT HEAD 16 SERPENT HEAD 17 SERPENT HEAD 18 SERPENT HEAD 19 SERPENT HEAD 20 SERPENT HEAD 21 SERPENT HEAD 22 SERPENT HEAD 23 SERPENT HEAD 24 SERPENT HEAD 25 SERPENT HEAD 26 SERPENT HEAD 27 SERPENT HEAD 28 SERPENT HEAD 29 SERPENT HEAD 30 SERPENT HEAD 31 SERPENT HEAD 32 SERPENT HEAD 33 SERPENT HEAD 34 SERPENT HEAD 35 SERPENT HEAD 36 SERPENT HEAD 37 SERPENT HEAD 38 SERPENT HEAD 39 SERPENT HEAD 40 SERPENT HEAD 41 SERPENT HEAD 42 SERPENT HEAD 43 SERPENT HEAD 44 SERPENT HEAD 45 SERPENT HEAD 46 SERPENT HEAD 47 SERPENT HEAD 48 SERPENT HEAD 49 SERPENT HEAD 50 SERPENT HEAD 51 SERPENT HEAD 52 SERPENT HEAD 53 SERPENT HEAD 54 SERPENT HEAD 55 SERPENT HEAD 56 SERPENT HEAD 57 SERPENT HEAD 58 SERPENT HEAD 59 SERPENT HEAD 60 SERPENT HEAD 61 SERPENT HEAD 62 SERPENT HEAD 63 SERPENT HEAD 64 SERPENT HEAD 65 SERPENT HEAD 66 SERPENT HEAD 67 SERPENT HEAD 68 SERPENT HEAD 69 SERPENT HEAD 70 SERPENT HEAD 71 SERPENT HEAD 72 SERPENT HEAD 73 SERPENT HEAD 74 SERPENT HEAD 75 SERPENT HEAD 76 SERPENT HEAD 77 SERPENT HEAD 78 SERPENT HEAD 79 SERPENT HEAD 80 SERPENT HEAD 81 SERPENT HEAD 82 SERPENT HEAD 83 SERPENT HEAD 84 SERPENT HEAD 85 SERPENT HEAD 86 SERPENT HEAD 87 SERPENT HEAD 88 SERPENT HEAD 89 SERPENT HEAD 90 SERPENT HEAD 91 SERPENT HEAD 92 SERPENT HEAD 93 SERPENT HEAD 94 SERPENT HEAD 95 SERPENT HEAD 96 SERPENT HEAD 97 SERPENT HEAD 98 SERPENT HEAD 99 SERPENT HEAD 100 SERPENT HEAD

MODEST MAIDENS



FOR SIX CENTS I'D GLAP YOUR FACE---IT USED TO BE TWO CENTS BUT EVERYTHING'S HIGHER THESE DAYS!

FROM NINE TO FIVE By Jo Fischer



Be sure to lock up before you leave.

Farm, Household Employers Must Report Wages

George J. Schoeneman, commissioner of Internal revenue, reminded farm and household employers that they must report wages and pay federal social security taxes on these farm and household employees who were brought into the old-age and survivors insurance system on January 1, 1951. Whether or not a farm or household employee's wages are subject to the taxes depends on the number of days worked for the employer and the amount of cash earnings. The federal social security tax and information return for the quarterly period of January-February-March is due on or before April 30, 1951, together with payment of the taxes.

A farm employer should make a return on Form 941 reporting the cash wages paid to each employee who meets all three of the following tests: (a) He was employed by the employer (whether or not doing farm work) continuously throughout the quarterly period of October-November-December, 1950; and (b) He was employed by such employer in agricultural labor on a full-time basis for at least 60 days in the quarterly period of January-February-March, 1951; and (c) His cash earnings for such agricultural labor are \$50 or more.

Roseburg Scouts Plan Wednesday Roundtable

The month by Roseburg Scouters roundtable will be held Wednesday evening at 7:30 p.m. at Riverside school. All Scouters are urged to attend this meeting for a briefing on the May 3rd convocation at the county fairgrounds, and summer camps. Plans for the big camporee are still being worked out. A large demonstration by the scouts will be given on the fairgrounds for the public on such things as woods safety, cooking, and civil defense measures.

Last weekend was the Explorer of Oregon. Five Roseburg Explorer Scouts made the trip to Eugene. They were Art Manville, Joe Levine, Dwayne Rutherford and Harold Oddy from post 7; and Donald Friday from post 131. While there the explorers had campus tours, attended athletic events and other fun activities. The national service fraternity on the campus, Alpha Phi Omega, helped to put on the event.

Sutherlin Lodge Nominates Heads

Sutherlin Rebekah lodge No. 215, met Thursday evening April 19 at the Grange hall, with Mrs. Emma Vandenberg, vice grand, acting as noble grand, in the absence of Mrs. Grace Wood, who was called away by illness. The Rebekah degree was conferred upon Mrs. Nina Thompson and Mrs. Vivian Pasmore. The first nominations of officers

Thurs., April 26, 1951—The News-Review, Roseburg, Ore. 3

was held. Mrs. Anna Hall and Mrs. Leona Slack were reported improving and can now have some company. Mrs. Nellie Peterson was reported as ill. Mrs. Mary Barker and Mrs. Grace Wood, reported as being called out of town due to death and accidents in families.

Mrs. Hazel Green reported on checking on insurance for lodge belongings, and Mrs. Cora Allen reported on the dishes.

Mrs. Lena Poole thanked the lodge for the perpetual membership fund. Mrs. Lotus Graves, noble grand of Roseburg, invited Sutherlin Rebekah to attend initiation at Roseburg the second Tuesday in May. Mrs. Thella Webber, invited the lodge to Roseburg next Tuesday, as the Past Noble Grand is presenting a negro comedy.

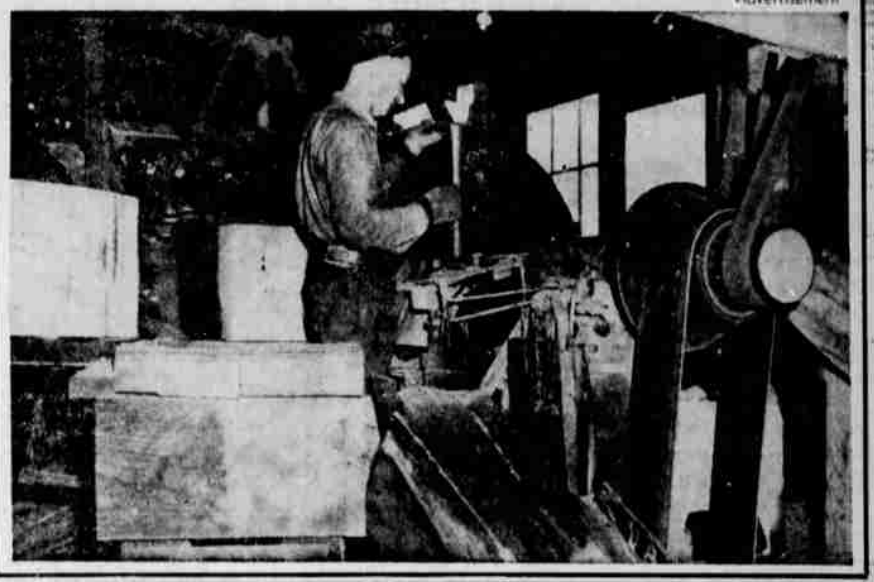
At a late hour the refreshment committee, Mrs. Edna Sullivan, Mrs. Virginia Williams, Mrs. Helen Squier, Mrs. Evelyn Stensley, Mrs. Juanita Atterbury, served delicious refreshments to thirty nine members and the following visitors: Mrs. Bessie Steelhammer of Tillamook; Mrs. Luella Thrush, Myrtle Creek; Mrs. Bernice Atmiller, Washington; Mrs. Lena Poole, Mrs. Elizabeth Winn, Mrs. Lotus Graves, Mrs. Thella Webber and Mrs. Etta Rogers of Roseburg; Mr. and Mrs. Olson, Mrs. Nell Orr, Mrs. Heneretta Beswick and Mrs. Eva Lockman. Berne, the name of the capital of Switzerland means "Bear."



PVT. BRUCE R. SCHEIERN, 21, son of Mr. and Mrs. Mark Scheiern, Roseburg, is completing his air force basic airmen indoctrination course at Lackland air force base. His training is preparing him for entrance into air force technical training and specialized work.

300 Bunches of Shingles Daily With One "Cat"

G. Kerevaar, co-owner of the Triple S Shingle Co. at Tillamook, Oregon, operates this Summer Upright Shingle Machine, 56" knee balter saw, 24" stroke, 9' blade drag saw, 2 conveyors and log haul with a single 78 h.p. "Caterpillar" Diesel Engine. "Caterpillar" engines are sold and serviced by Interstate Tractor and Equipment Co., North Jackson and Sec. and Avenue South, Roseburg.



FUNNY BUSINESS By Hershberger



"He's a smart dog—figures he doesn't get so tired with a shorter wheelbase!"

By Al Capp



By Merrill Blosser



By V. T. Hamlin



By Chic Young



Business Directory

- RADIO SERVICING Hansen's Radio Service, Sutherlin, Radio Doctors, Phone 3-7456, Free Pickup and Delivery. PLUMBING Pete Crumett, Dial 3-4396. Kier-Croach Plumbing Co., 517 South Stephens, Phone 3-5377. Johnson Plumbing & Supply Co., 965 Garden Valley Rd. Bus. Phone 3-665, Res. Phone 3-8131. Harris Plumbing & Heating Co., 805 South Stephens, Phone 3-8173. Coen Supply Co., Phone 3-4461. Terp's Plumbing, Phone 3-7266. HEATING R. Ritzman Heating Co., Hot Water and Steam Oil Burners, 1703 Brown, Phone 3-8267. ELECTRICIANS RIDENOUR ELECTRIC 1600 N. Stephens Phone 3-7303 AL'S ELECTRIC MOTOR SHOP Phone 3-4301 602 Winchester DuFresne Electric, Phone 3-5222. A-1 Electric Co. (Formerly Ace, Elec.) Phone 3-8355 Res. Ph. 3-3165 WASHING MACHINE SERVICE J. E. Newberry's Washing Machine Service, 102 W. Commercial Avenue, Phone 3-3591. Washing Machine Service, Kusty's Appliance Repair, 510 N. Jackson, Phone 3-3091. FIRE EXTINGUISHER SERVICE Fire Equipment Co., 220 N. Main, Glenn H. Taylor, Ph. 3-7134 KINDERGARTENS COMMUNITY KINDERGARTEN Phone 3-6978 DECORATORS Painting and Paper Hanging H. E. "Woody" Wood—Phone 3-4240 MASONRY See Haft for building Commercial masonry, block bldgs, etc. Guaranteed Work, Gust J. Haft, P.O. Box 104, 1506 Military. CARPENTERS Roofing, Roof Repairing, Insulation, Ph. 3-8255, Acme Roofing Co.

We Make RUBBER STAMPS Commercial Printing M-M Printers



Modern Furniture Store, Inc. SERVICE DEPT. ● General Appliance and Radio Repairing ● Pickup and Delivery ● Prompt Attention ● All Work Guaranteed Open 9:30 to 5:30 222 West Oak Phone 3-4337

CLEANING Fine Rugs, Furniture, Autos UPHOLSTERING Repair—Remodeling CUSTOM MADE Expert Furniture Cleaners Phone 3-3191 Free Pickup and Delivery Free Estimates

CHIMNEY PLOCKS Lite-Rock Building Blocks Concrete Building Blocks Chrystalite Tile Plant 3750 N. Stephens 3-6944

BEE HIVE RENTAL SYSTEM Cars—Pickups—Trucks Long or Short Trips KEN ELLISON 740 South Stephens Phone 3-7412

Look At Your Hat EVERYONE ELSE DOES The 'Top' Hatters SHINE PARLOR OPEN 'TIL 8 P.M. 405 W. Cass Dial 3-8580

HARGIS ELECTRIC Specialists Radio, Refrigeration, Household Appliance Service 20 Years Experience All Work Guaranteed 112 E. Cass St. Phone 3-6355

TOOL RENTALS Floor Sanders and Edgers Belt Sanders Floor Polishers and Scrubbers Paint Spraying Equipment DOUGLAS PAINT & HDWE 906 S. Stephens Phone 3-6167 Open 'Till 8

Royal Typewriters Victor Adding Machines Sales and Service Rentals Fast, Dependable Service Ken's Office Equip. 631 South Stephens, Ph. 3-5456

Individualized Floors of Beauty... FREE ESTIMATES MODERN FLOOR COVERING 222 West Oak Phone 3-4337

ROSEBURG PAVING CO. Asphalt Paving Custom Blading Office: 634 S. Main Telephone 3-6183 Free Estimates "Bill" Lassiter

Excavating Road Building Carry-Alls—Tractor Shovels— Bulldozers. Hour or Contract 200 S. Pine Ph. 3-7534 LEE MORTENSEN, INC.

Nelson & Pyle Woodworking Co. Windows, Sash, and Frames Mill and Masher Phone 3-1134

CONSTRUCTION TODD BUILDING CO. 904 S. Stephens Ph. 3-5596

Survey & Core Drilling DOMESTIC WATER WELLS IRRIGATION Fast Rotary Equipment Phone Sutherlin 2401 Mornings Till 8:00 A.M. R. H. STEIBER

EQUIPMENT FOR RENT Back Hoes Trenchers Cows—Cat Graders Lawys Scoopmobile Self-Propelled 105 Compressor Hour or Contract Statewide Construction Co. Phone 3-5430, Roseburg