



INCUBATOR DISPLAYED—Mrs. Jay Conn displays a unit of a Robbins incubator containing 10,000 turkey eggs, the entire machine having a capacity of 30,000. The Conns long have enjoyed an enviable reputation in the hatchery business. They achieved a 76% hatch of all eggs set during their first run of the season. —(Paul Jenkins)



SURVEYS BROOD—Jerry Stidham, employed at the Conn Turkey Hatchery at Melrose, views a brood of Oregon broadbreasted bronze poults in a brooder house heated by an Oakes gas brooder. The little turkeys are of two ages, 10 days and two weeks. —(Paul Jenkins)



BROODER RUNS—Jim Conn, young son of Jay Conn, stands beside a brooder run, one of many such forming a part of the extensive brooding facilities in the Conn Hatchery at Melrose. The runs have wire-mesh floors and sanitation necessities. —(Paul Jenkins)

Playoff Of 'Y' Men's League Slated Tonight
First Christian church basketball team will face the Fairhaven Market quintet tonight in a playoff game for the YMCA Men's Basketball league crown.

The First Christian church team is the winner of the league's first half play while Fairhaven is the second half circuit winner. The playoff game will be on the court of the Benson school, starting at 7:30 p. m. The public is invited to attend the admission free tilt.

FREDDIE, A GIRL WANTS A SAFE, SECURE FUTURE!

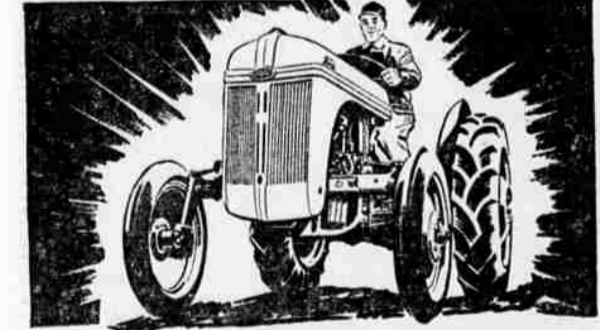
SHE IS RIGHT! INSURE!

School's Faculty Quits Because Of Low Salaries
ROGUE RIVER — (AP) — Six of Rogue River high school's ten faculty members have resigned because they said the district's salaries were inadequate to meet living costs. Those who will leave at the end of the school year include Superintendent Alf V. Mekvold and Mrs. Margaret Stockman, vice-principal.

CORRECTION
In Lockwood Mtrs. Ad for engine exchange, which appeared March 19th — The closing date of the exchange offer read April 1st — should have read April 15th.

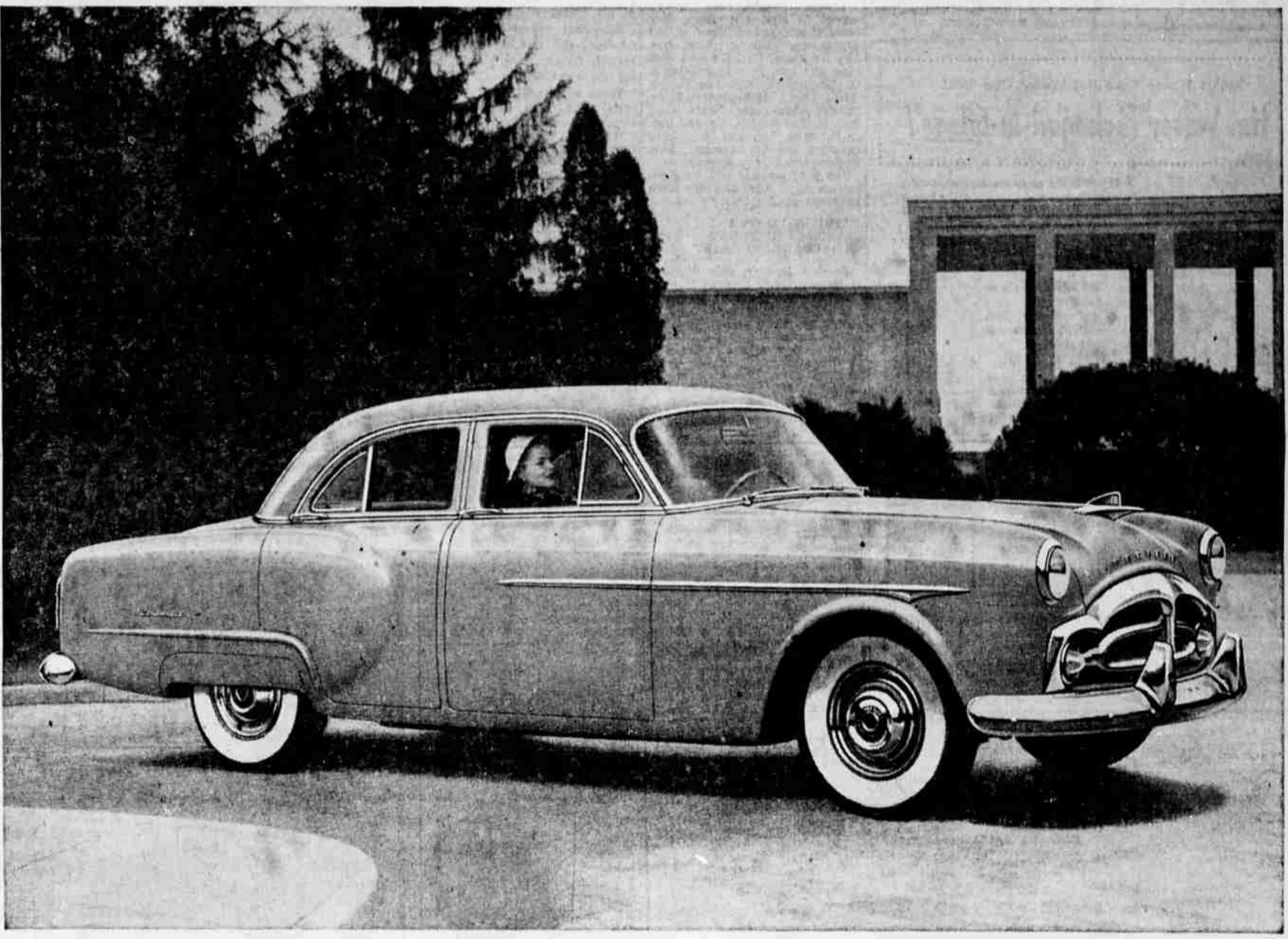
ROY O. YOUNG INSURANCE
205 W. Cass Dial 3-3044

GET MORE FOR YOUR TRACTOR DOLLAR



GET A... Ford TRACTOR
It gives you...
● POWER ● EASY HANDLING
● ECONOMY ● LOW SERVICE COST
● LONG LIFE ● HIGH RESALE VALUE

\$\$\$ GET MORE \$\$\$ For Your Tractor Dollar
UMPUA TRACTOR CO.
125 SOUTH PINE PHONE 3-6567



"Are all automatic drives alike?"

That's a question we often hear—and we believe the answer to it has a big bearing on your choice of a new car. The answer is...
NOT in snow, sand, or mud! If ever you've bogged down and couldn't "rock" your car because of the gear-shift lag in a self-shifting transmission... you'll appreciate this Packard Ultramatic advantage: Without even taking your foot off the accelerator, you can change instantly—without clashing—from Forward to Reverse!

NOT on slippery streets! If a sudden "down-shift" has ever thrown your car into a dangerous skid, you'll know why Packard owners are so enthusiastic about the safety of Ultramatic Drive. Its smooth, gradual engine braking power gives you complete control all the time!
NOT on the long haul! If you're familiar with the cost of gas-wasting slippage at cruising speeds—or if you've paid the maintenance bills on a complicated, self-

shifting transmission—you'll welcome the thrifty, lasting efficiency of Packard Ultramatic Drive. No gas-wasting slippage when cruising. And no complicated mechanism to be pampered.
You owe it to yourself to be fully informed on automatic drives before you buy any new car today. The best way to make comparisons, of course, is to start with the most advanced drive of them all—Packard's exclusive Ultramatic Drive!

It's more than a car -- it's a **PACKARD** Ask the man who owns one
BARCUS

Highway 99 N. at Garden Valley Road

Phone 3-5566