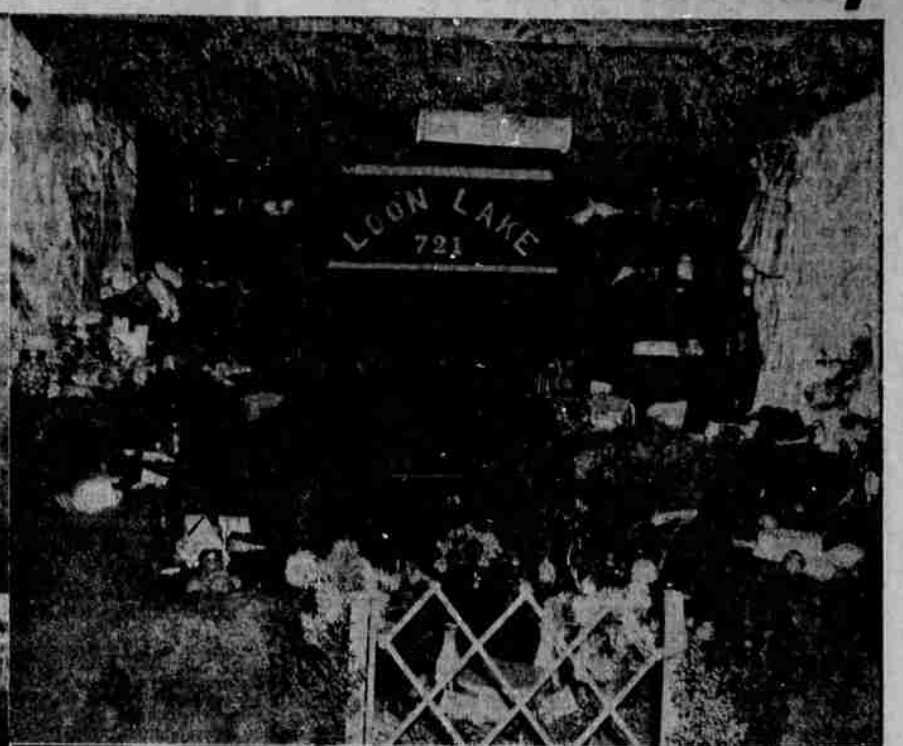


# Crowds Enjoy Western Douglas County Fair At Winchester Bay



**FAIR SCENES** taken Sunday at Winchester Bay depict some of the varied activity that community had to offer crowds on the final day of the Western Douglas County fair. Photo at top left shows a portion of the newly-dedicated Tidelands park and boat mooring basin and only a few of the hundreds of cars parked on the fill, extending out in the bay at lower left. About 500 persons heard County Judge D. N. Busbark invite Douglas county residents and vacationists to use the facilities, built at a cost of about \$23,000. Loon Lake grange, photo upper right, was adjudged

tops in grange displays. Home grown produce was tastefully arranged on a bed of green moss, with foliage overhead completing the setting.

A special section for ceramics was added to the premium list in this year's fair, indicative of the growing interest in that hobby. In photo at center right, Valyn Malstead of the Winchester Bay area and formerly of Roseburg, holds a figurine which won her a blue ribbon award. Ceramic exhibits were numerous, ranging from wall plaques and vases to decorative lamp bases, and were entered by students and three instructors of the art.

Ruling over the three-day fair as "Queen of the Woods" was Mrs. Robert (Janice) Smith, selected from among a field of seven young married women. In photo at left, the queen poses in front of the dedication sign which marks the site of the new park. Judge Busbark, photo at lower center, stands before the microphone as he extols the virtues of the new park and its benefits to Douglas county residents. Recounting what every ardent fisherman knows, that Winchester Bay is unparalleled for salmon fishing, the

Mon., Aug. 21, 1950—The News-Review, Roseburg, Ore. 7

judge expressed the hope that the new boat mooring facilities will ease some of the congestion caused by the bay's growing fame. A booth for antiques and hobbies, sponsored by the Reedsport-Gardiner BPWC and shown in lower right photo, drew crowds throughout the day.—(Staff photos).

**Stop—Shop—Co-Op**

**ALEMITE**

Fittings,	All Kinds
Hydraulic	Pin Type
Button Head	Giant Button Head
Standard Dot	Connectors
Adapters	Couplings
Hand Guns	Push & Lever Type
Cat Bolome Bucket,	High Pressure
Air Guns	Trans. Bucket
Meters	Air Regulators
Temp. Gauge	Amp. Meters
Oil Pressure Gauges	

BUY WHERE YOU SHARE IN THE SAVINGS

DOUGLAS COUNTY

**Farm Bureau Co-Operative Exchange**

ROSEBURG, OREGON  
Phone 98

Located—W. Washington St. and S. P. R. R. Tracks

**DAIRYMEN - SHEEPMEN**

Now is the time to buy your hay, before prices go up.

We have second, third, and fourth cutting California Alfalfa — Every Bale Guaranteed — Contact

**Roseburg Feed & Seed Co.**

Oak and Spruce Streets Phone 314

No Order Too Small or Too Large

**WANTED**

**A BUYER**

**For a Fully Equipped TRUCK SHOP**

That is doing an excellent business.

INTERESTED?  
Call Sutherlin 9254 or See

**SUTHERLIN TRUCK and EQUIPMENT**

Sutherlin, Oregon

**When you pick a Tractor... be sure you can always get parts \$1408.00**

**Ford TRACTOR**

WITH PROOF METER  
USED FORD TRACTORS \$600 UP

**Umpqua TRACTOR COMPANY**  
125 SOUTH PINE ST.