

### Fairy Tale Show Slatd July 17

Seven midgets will have the stellar roles in a touring production of "Snow White and the Seven Dwarfs," sponsored by the Roseburg Business and Professional Women's club and to be presented at 8 o'clock Monday night, July 17, in the Junior high school auditorium, according to an announcement by the president, Mrs. T. B. Virden. The show will also feature a ballerina and a cast of 20.

An operetta in three acts, the show was adapted from the Grimm fairy tale by Hill Belmont. He also served as pianist and musical director. The show, which has played to capacity houses in Chicago, is presented by Penthouse productions, a New York firm that specializes in entertainment for children.

Tickets will be on sale this week at Iles', the Imperial Cleaners and Cleo's bakery.

### Myrtle Creek Reserve Officer Begins Training

W. H. Ashley of star route, Myrtle Creek, was one of 950 Naval Reserve Officers training corps midshipmen from 32 colleges and universities to begin training July 8 at the Naval Amphibious base, Little Creek, Va.

Ashley, a junior at Oregon State college, will receive training both ashore and afloat in amphibious operations. During the first week, devoted to shore training, he will learn through practical work, lectures and demonstrations, the essentials of preparing a successful amphibious landing.

The following week he will receive instructions in the afloat part of his amphibious education with indoctrination in shipboard routine aboard vessels of the amphibious force. He will witness a coordinated sea-and-air-live-fire demonstration attack on an "enemy" island and will participate in a rehearsal landing.

To clima hxis training he will take part in a full-dress assault landing employing sea-air support and Marine Corps Reserve troops



**M/SGT. ERNEST J. GRIMM, U. S. Air force,** has been assigned Army-Air Force recruiting sergeant for Roseburg. He will replace M/Sgt. John F. Rose, who held the position for the last year and who is being transferred to similar duties at Klamath Falls Aug. 1. M/Sgt. Grimm comes to Roseburg from Reese air force base, Lubbock, Texas, where he was assigned to the base purchasing and contracting offices. The new recruiter, his wife and three-year-old son will reside at 2017 Morris St. (Staff photo.)

### Mrs. Mira Wilson Claimed By Death

Mrs. Mira D. Wilson, 82, resident of Douglas county since 1912, died here July 8 following a prolonged period of illness. She was born at Lawrence, Kan., Sept. 3, 1867, and was married to Leonard F. Wilson, Oct. 28, 1883, at Harbor, Ore. She had made her home in Reedsport for a number of years and was a resident of Roseburg from 1935 to 1939. Since that time she had made her home with her children. Her husband, Leonard F. Wilson, died in 1937. Mrs. Wilson was a member of the Christian church.

Surviving are two daughters and two sons, Mrs. Estella Hoagland, Brookings; Mrs. Pearl Needham, Albany; Rella H. Wilson, Umpqua, and Delmer C. Wilson, Drain; a sister, Mrs. Effie Jones, Crescent City, Calif., eight grandchildren and 13 great-grandchildren.

Funeral services will be held in the chapel of the Long & Orr mortuary today at 2:30 p.m. with the Rev. L. M. Nelson of the Christian church at Coquille officiating. Concluding services and interment will follow in Masonic cemetery.



**MERCHANDISE PRIZE SHOOT**  
Every Friday Evening  
7 - 10 P. M.  
**YONCALLA TRAP & RIFLE CLUB**  
1/4 Mile North of Yoncalla on Highway 99

#### ON HONOR ROLL

Donald Brand and Shirley Helweg, both of Roseburg, were among the 134 students to make the spring semester honor roll at Willamette university, according to

**MOVES OFFICES**  
James Daugherty, civil-sanitary engineer, moved his offices over the weekend from the U.S. National bank building to 239 North Stephens street. The latter location was formerly occupied by Thomas Hartfield, attorney.

#### ROSEBURG FUEL OIL "KIDS"

BY GOSH, IT'S HOT AS IT CAN BE, BUT WINTER'S COMING, YES-SIR-EE!



Nature has stored up heat for next winter — fine oil. Arrange to have us fill your tank and keep it filled.

**STANDARD HEATING OIL**  
**ROSEBURG FUEL OIL SERVICE**  
PHONE 1289-NIGHT PH. 1047-Y  
343 N. JACKSON

Harold B. Jory, registrar. Of the total honor roll students, 35 scored straight A grades. Both Brand and Miss Helweg finished the semester with a B-plus average.

#### It's A Fact . . .

that the Sun Life Assurance Company of Canada has well over a million policyholders throughout the world. In the more than three-quarters of a century of the Company's existence over two billion dollars has been paid to policyholders and beneficiaries.

Sun Life Assurance Company of Canada



**Duane Baker**

Representative Phone 715-R-5



## Next Best Thing to a New Road!

YOU must understand, of course, that nothing in the world can take the place of a beautiful ribbon of improved highway—

—stretching so enticingly out into the open country, and all but beseeching you to come for a ride!

But under the happiest auspices, you will have to do much of your driving, for years to come, down roads and highways that leave something to be desired—

—and how lucky you'll be if you ride them out in a 1950 Cadillac!

In recent years, Cadillac has carried out a tremendous program of research and improvement to achieve a finer "rough-road" ride. The development work has covered steering, springs, shock absorbers, frame, wheels, tires, shackles—and all the engineering problems involved.

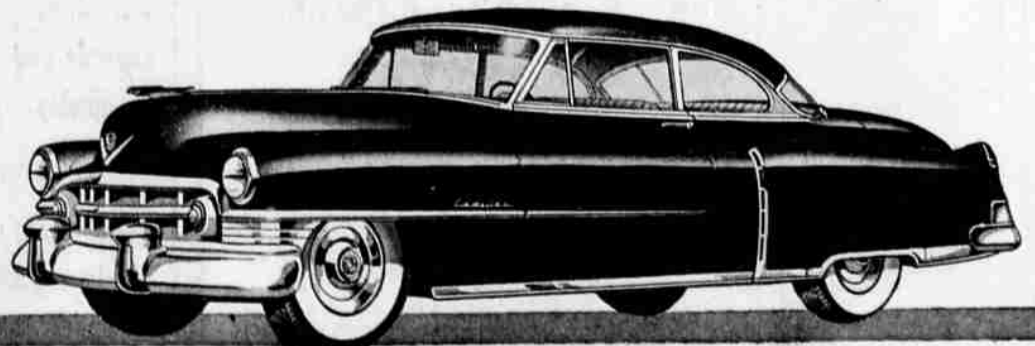
In the 1950 Cadillacs, this great program has come to full fruition—and the results are simply a revelation.

First, you get wonderful *balance*. The car "stays put"—and you have a reassuring feeling of stability, even when the going's uncommonly rough.

And your ride is amazingly *level*. You "float" over the bumps and the depressions, ever so gently. Only a road so bad that it deserves condemning can make itself obvious to either the driver or passengers.

And, of course, the remarkable *quietness*, of both body and chassis, shows up most dramatically on the roughest roads. For quality tells its finest story when the pressure is greatest.

Why not come in and get acquainted with this wonderful car? We'd be happy to see you any time.



## ROSEBURG MOTOR COMPANY

Rose and Washington

Phone 1551

ROSEBURG OREGON



PHONE 95

Now! Sweeping Reductions in Every Department of Our Store! Many More, Like the Sharp Cut Prices  Show... on This Page!

# MID-SUMMER CLEARANCE!

Big savings on clothing!

Here are more! Check 'em off!

### DON'T MISS THESE!

### HURRY IN FOR THESE

- MISSSES' REG. 2.98 SUMMER SKIRTS**  
Cottons, rayons, even denims in this big clearance. Pastels, darks, prints. 22 to 30. **2.44**
- WERE 2.98 . . . BLOUSES FOR MISSSES**  
Acetate rayon-and-nylon, cottons, rayon crepes in white and pastels. Save! 32-38. **2.44**
- WERE 5.98 . . . MISSSES' RAYON DRESSES**  
Save on Summer rayons. Pastels, darks, prints, some washables. Broken sizes. **3.50**
- REG. 2.98 WOMEN'S PLAYS! OES**  
Sharply reduced, simply because they're discontinued styles! Broken sizes only. **2.44**
- REG. 1.98 WOMEN'S "SKIPS"**  
Fabric sandals with springy rubber soles. Out they go at this amazingly low price! **1.77**
- MEN'S 69c BROADCLOTH SHIRTS**  
Limited quantity — Assorted patterns. All Sizes! Hurry! **57c**
- MEN'S 1.50 LEA**  
White only, assorted sizes. "Tops for your trousers." **57c**
- BOY'S 1.98 COTTON SHORT SHIRTS**  
Convertible collar styles in washfast plaids and solid colors boys want. Sizes 6-18. **97c**
- LADIES' 79c NYLON HOSE**  
45 gauge, 30 denier. Summer shades. All sizes. **57c**
- INFANTS' 1.00 BROADCLOTH PERS**  
12 Mo. and 18 Mo. only. Assorted colors. Hurry! **47c**
- CHILDREN'S 1.29 SHORT SLEEVE SHIRT**  
Plaid, sport shirt type. Sizes 1-6. **99c**
- REG. 45c LINEN TOWELING**  
Unbleached, 18" width. Steven's P quality — Yard **23c**
- REG. 1.19 BALL PEIN HAMMER**  
7-Oz. Just the hammer for those light jobs! **87c**
- REG. 45.95 SUPER-VALUE CLEANER**  
Quality-built, sturdy upright vacuum! Fine for commercial use—tops for budgeted home too! **39.95**
- 24.95 PLATFORM SPRING**  
Helix suspended platform top! 90 resilient double back coils for buoyant support! **19.88**
- 7.95 ALL-METAL CHAIR**  
Rust resistant baked-on enamel finish . . . comfortable full-sized seat and back! **4.88**
- 29.95 PLATFORM ROCKER**  
Comfortable coil spring seat . . . well padded back. Colorful Floral Tapestry cover! **24.88**
- MARBELIZED LINOLEUM—ORIG. 1.98 SQ. YD.**  
6 ft. width in odd lengths. A wide selection of colorful marbelized patterns! **1.79**
- REG. 7.95 ICE CREAM FREEZER**  
2 qt. size. Just a few left, so hurry! **3.97**
- WARDOLEUM YARD GOODS—ORIG. 79c**  
6 and 9 ft. widths in odd lengths! A wide selection of smart, colorful patterns! **64c**

**Specials! GET BARGAIN PRICES NOW**  
While they last!

Home repair needs reduced!

- REG. 1.98 MORTISE LOCK SETS**  
Inside lock sets, dull brass finish. Just a few left at this Big Reduction. **97c**
- REG. 1.00 FOUR-IN-HAND NECKTIES**  
Summer shades, assorted prints, rayons and nylons. **77c**
- REG. 14.95 COWBOY BOOTS**  
Sturdy built. Western Style heel, floral inlaid uppers. Broken sizes. **10.97**
- REG. 2.29 INFANTS' SHOES**  
White only. All sizes from 3 to 8. Soft leather uppers, semi-hard soles. **1.47**
- REG. 3.98 COTTON PLAID THROW RUGS**  
Size 30" x 60" . . . . . NOW 3.00  
Size 27" x 50" . . . . . NOW 2.00  
Size 22" x 42" . . . . . NOW 1.66  
Size 22" x 34" . . . . . NOW 1.43
- 189.95 FRIEZE 2-PC. LIVING ROOM**  
Modern two-cushion, attached pillow-back styling. Expertly tailored long-wearing frieze upholstery. Coil spring construction! **164.88**
- 79c PLASTIC FOOD CONTAINER**  
3-Pc. set. Use to store leftover foods, odorless and tasteless. Seals tight, chip proof, versatile space saver for your refrigerator. **67c**
- 1932-34 V-8 REBUILT MOTORS**  
New motor guarantee. All parts replaced new. Reg. \$114.95 — Exch. NOW **94.95**  
1937-38 V-8. Reg. 134.95 exch. Hurry! — NOW **114.95**
- STYLETONE RUGS—ORIG. 79.95**  
9x12 ft. size. All-wool pile . . . more than 5,000 tufts in each square foot. Rich, tone-on-tone leaf pattern in decorator colors. **49.88**