

# Government Affects Plans Of West Farms

By RALPH H. HEPPE  
SAN FRANCISCO—Government programs are influencing plans of far western farmers more this season than in any other recent year.

Acreage allotments and withdrawal or lowering of support prices have forced farmers to seek other crops or to lower production sights.

Mandatory cutbacks in five crops total 2,250,000 acres—a staggering amount of land for which new use must be found.

That's the 1950 agricultural outlook in the seven states of the 12th Federal Reserve district as reported by the San Francisco Federal Reserve bank.

Five important district crops are subject to acreage allotments if growers wish to be eligible for direct price supports. They are, with acreage cutbacks compared with 1949:

Wheat—To be cut by almost 1,500,000 acres.  
Cotton—To be slashed nearly 500,000.

Dry beans, rice and potatoes—

\$725 to \$900

Buys A

**FORD TRACTOR**

SEE

UMPOUA TRACTOR CO.

125 S. Pine Phone 614-J

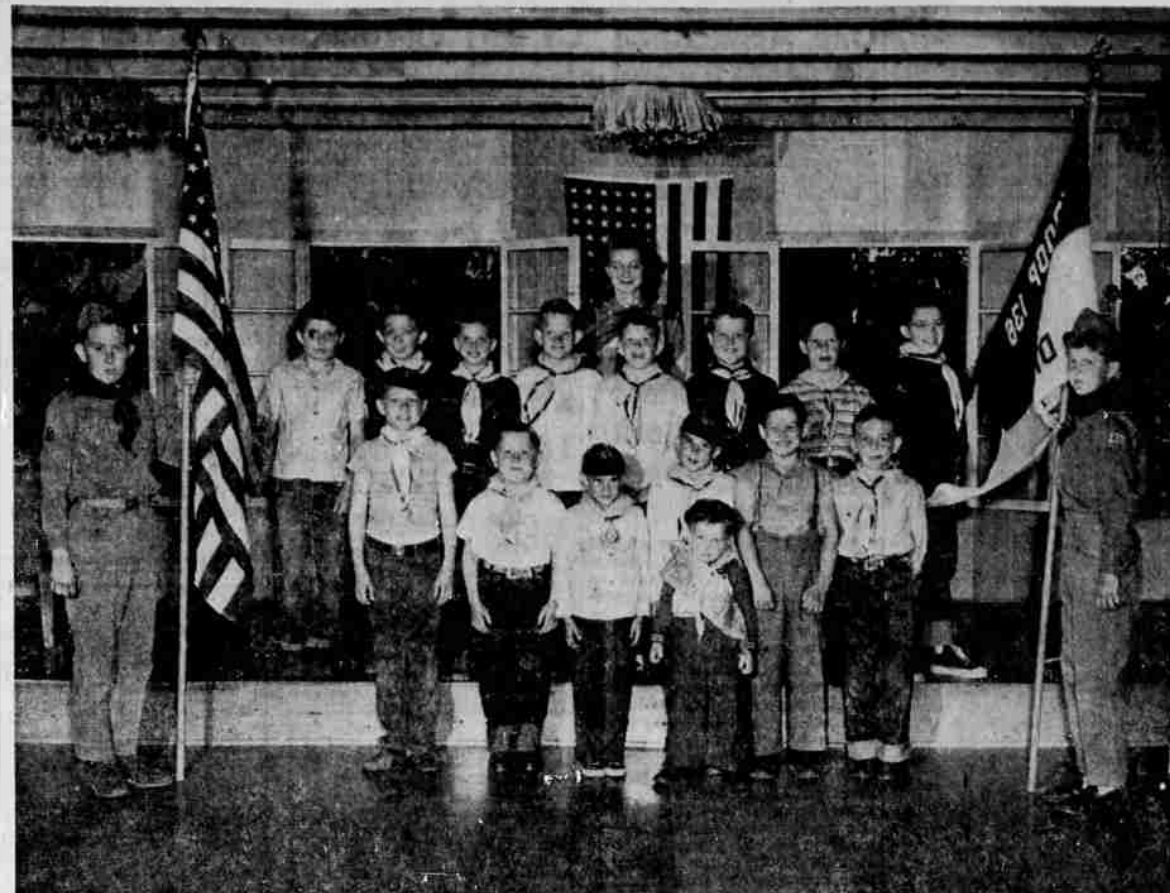
## Wool Growers Note

Wool Prices Change Rapidly--  
For Any Day's Market Value Call

**Ora Welker**

Agent for H. I. Haber Wool Co.

800 S. Pine St. Roseburg, Ore.  
Telephone 639-R or 105-L



**CUB SCOUTS DEN 2** of Winston performed at a meeting of the Winston Community club recently. Mrs. Alland McLennan is the den mother. Pictured are: on left, den chief, Charles Glenn; back row, Jimmy Harris, Murray Wells, Jackie McLennan, Larry Bissette, Jerry Griese, Eugene Fisher, Arlie Husbands, Allan Dunlap, and Den Chief George Butler, on right; Front row, Frederick Snow, David Glen, Clair Beaudoin, Darryl Beaudoin, Claudia Roberts, and David Burt. Johnny Wilton, den mascot, age 2½ years, is the nephew of Mrs. McLennan, who is standing behind her cub pack. (Picture by Photo Lab.)

Smaller acreage cuts. The cutbacks by states: Arizona, 148,000 acres; California, 547,000; Idaho, 455,000; Nevada, 6,000; Oregon, 264,000; Utah, 133,000; Washington, 677,000.

Now take a look at farm products affected by price supports, forcing farmers to alternative

crops or enterprises.

The support floor was pulled from under dry peas and turkeys. It was lowered for butterfat, manufacturing milk, eggs, flaxseed and dry beans, compared with the 1949 level. Lowering the support for butterfat and manufacturing milk was cushioned by use of the "modernized parity price formula," however. This brought the support prices for those products close to the 1949 floor.

As anticipated, farmers have turned to feed grain production to keep their acreage working. Livestock production, the report said, is a logical alternative in view of the demands of the expanding western population.

There also has been increased planting of sugar beets—40 percent by acreage. Next largest increase was 20 percent in sorghums.

Sharpest acreage cut was the 64 percent in flaxseed. Next largest was in dry field peas—24 percent. Indications were that poultrymen, with unfavorable egg and feed price ratios, would curtail purchase of baby chicks by around 12 percent.

There are 28,000,000 acres of public domain timber and wood land in the U.S.

## Spring Good Time To Take Inventory And Repair Turkey Range Equipment

Spring is a good time to take inventory and repair turkey range equipment before putting it in use.

This timely reminder is from Noel Bennion, OSC extension poultry specialist, who points out that range equipment used extensively in this state consists of shelters, roosts, feeders and watering devices. Before putting it in use, he suggests that an inventory be taken and repairs be made where needed.

Efficient turkey operators, Bennion adds, have all their equipment skid mounted and constructed so that it can be easily moved from place to place to avoid contamination. This management practice also eliminates wearing bare spots in the turkey range from excessive use.

While some growers use neither

shelters or roosts, most Oregon market turkey producers use them to avoid mud, especially after fall rains start. Shelters provide roosting quarters, protection for poults when they are young, and shade during the warm summer months.

The same shelters, Bennion states, may be also used for the breeding flock during the winter months.

With reference to sun and shade, halfway measures are apparently not adequate. Bennion suggests that when shade equipment is built it provide enough shade for the entire flock. Otherwise, crowding and deaths may be the result of insufficient shade. The shelters must be placed close enough together to encourage the turkeys to spread out rather than gather

## 1,000 Entries Expected At Lamb Show At Portland

PORTLAND, May 29—The combination of \$500 premium money, no entry fee, minimum marketing charges and prospects of a strong sale are expected to draw 1,000 entries for the first annual Pacific International market lamb show and sale here June 13.

Entry lists must be received by June 9 at the Pacific International Livestock Exposition in North Portland, where the event will be held. Exhibitors who may not receive entry blanks should submit information as to size of pens and number of entries.

Entries will be classed in pens of 5, 10, 25 and 50 market lambs with trophies and other awards in addition to the \$500 premium list. They may be in the stock show building June 12 but must not be here later than 9:30 a.m. June 13, starting hour of judging. The auction sale will be 1:30 p.m. Judges will be Ed. Arnold, lamb buyer for Armour & Company, and A. R. Bohoskey, widely known lamb feeder and judge from Yakima, Wash. Norman C. Warsinske of Billings, Mont., has been engaged as auctioneer.

Representatives of the stock yards and commission firms state that buyers in substantial numbers will be present to represent purchasers operating in Oregon, Washington and California.

Exhibitors may make as many

under a single shade unit. Most growers use self feeders built on skids which will hold from one-half ton to a ton of feed. Reduced servicing means a reduced labor requirement, Bennion points out.

Regardless of type of waterer used, portability is a must so it may be moved frequently to prevent disease. Open ditches are a common source of contamination, the specialist adds.

NEW

LOCATION

ACE

ELECTRIC

749 S. Stephens

Phone 1478-L

House, Commercial and Industrial Wiring.

Motor Repair

ALL WORK

GUARANTEED

Mon., May 29, 1950—The News-Review, Roseburg, Ore. 9

entries as they wish but only two cash awards can be won by a single exhibitor. All breeds will compete against each other with the respective classes. As customary, ram lambs and long-tailed lambs will be heavily penalized. Lambs' fleeces should be untrimmed.

The event was originated by the Oregon purebred sheep breeders, with full support of the Portland Union stock yards, North Portland livestock firms, the Pacific International Livestock Exposition and meat packers.

**TWO MORE BLOCKS ASKED**  
SALEM—The capital planning commission is recommending that two more blocks in the capital area be purchased by the state. The commission suggested that the blocks north of Center street,

between Capitol and Winter streets, be held as sites for future state buildings and utilized, in the meantime, for parking areas.

FLOOR SANDING

and FINISHING

Estimates  
Phone 1573-R

Leslie Pfaff

320 Ward St.

## ECONOMICAL POWER MAXIMUM EFFICIENCY

### '69' HARVESTER and the MODEL 'R' TRACTOR

The Model R and a '69' Harvester are a perfect harvesting combination. The R always has plenty of reserve power when the going gets tough. It's better to have plenty of power than not quite enough when you need it. The "Finger-tip" hydraulic controls of the R teamed with the "69" make harvesting a one-man operation. The Visio-

lined design of the R lets you see what you're doing. The smooth riding qualities... easy steering... hand operated clutch... quick-acting brakes... make the job less tiring on long work days during harvest. You'll be wise to check the many features of both the R tractor and the Harvester '69' before your harvesting problems arise. Both machines are designed with traditional MM quality for economy and dependability in operation. And remember, special equipment is available to adapt this "harvesting team" to your particular conditions... no matter what.



YOUR DEALER IN SALES AND SERVICE

BUY WHERE YOU SHARE IN THE SAVINGS

DOUGLAS COUNTY  
**Farm Bureau Co-Operative Exchange.**  
ROSEBURG, OREGON  
Phone 98  
Located—W. Washington St. and S. P. R. Tracks

## Let us Solve your Feeding Problem

Grow all your own feedstuffs?

Swift's Concentrates (fed mixed or free-choice) provide the essential animal and vegetable proteins, vitamins and minerals needed to balance home-grown feeds.

Buy some feeds mixed?

There's a Swift's Mixed Feed to meet every feeding problem. You can get Swift's completely balanced rations or supplements for home mixing or free-choice feeding.

Need extra minerals?

Swift's Mineral Supplement, pulverized or in the new Block form, provides ten essential mineral elements which all livestock need.

WE CARRY SWIFT'S  
Line of Concentrates and Mixed Feeds:



(43%) Swine Concentrate  
(23%) Sow and Pig Meal



(36%) Steer Concentrate



(36%) Dairy Concentrate  
(25%) Calf Meal  
(24%) Dairy Feed  
(16%) Dairy Feed



(38%) Turkey Concentrate  
(26%) Turkey Starter  
(20%) Turkey Grower  
(16%) Turkey Finisher  
(22%) Turkey Breeder



(37%) Poultry Concentrate  
(26%) Poultry Balancer  
(18%) Chick Starter Mash  
(17%) Growing Mash  
(20%) Egg Mash  
(16%) Laying All-Mash  
(20%) Broiler Mash  
(22%) Poultry Breeder

SWIFT'S MINERAL SUPPLEMENT (by Bag or Block)  
For all livestock and poultry



Headquarters For Massey-Harris Farm Machinery

Roseburg Grange Supply Co.

222 Spruce Phone 176

## Farmer "Bill" Miller Your Interstate Man Says,

**OUR DEALS STAND THE TEST!**



Tune In! Radio KRNR  
7:50 a. m. Tuesday—Thursday—Saturday  
Hear FARM FARE

... and our farm machines stand the gaff!

At Interstate You Get The Best Brands

"Caterpillar" diesel tractors and John Deere quality tractors and implements. No need to accept less!

At Interstate You Get The Fairest Trades

Get the benefit of our knowledge of the market. We give you the best possible trade-ins.

At Interstate You Get The Easiest Financing

Simple bank interest... let us help you work out the financing arrangement that you can handle best.

### HEY: HAY!

HAYING WILL BE A LOT SIMPLER IF YOU USE JOHN DEERE'S 1950 LINE OF HAY TOOLS—DROP IN AT INTERSTATE AND SEE THE MODERN WAY TO MAKE HAY.

Automatic Hay Balers  
Field Pick Up Hay Choppers  
No. 2 Ensilage & Hay Blowers  
No. 5 Power Mowers—Fit All Tractors  
No. 51 Power Mowers for Model "M"  
Side Delivery Rakes

At Interstate You Get The Lowest Possible Prices

Our direct distributor buying set-up gives you LOW prices on everything. Check us!

At Interstate You Get The Best Used Goods, The Best Service, The Best Repair Parts

All in All, At Interstate You Always Get The Best Deal

# INTERSTATE FARM STORE

709 N. Jackson  
FREE DEMONSTRATION!

ROSEBURG

Phone 893

● GET THE FEEL OF THE WHEEL ●

SEE US!