

Some GOP Chiefs Blast President's Formosa Policy

WASHINGTON, (AP) — President Truman's "hands off" policy toward Formosa drew immediate sharp criticism from some congressional Republicans. Most Democrats applauded it.

Senator Ferguson (R-Mich) said the President's pronouncement "kicks the bi-partisan foreign policy right out the window." Ferguson said neither the Republicans nor the Democratic leaders of Congress were consulted about the Formosa policy.

Senate GOP Leader Wherry (Neb) said the President's pronouncement amounted to an "invitation to Moscow-directed Communists" to take the island.

But Chairman Connally (D-Tex) of the Senate foreign relations committee said:

"I'm in thorough agreement with the President's statement respecting Formosa. Any other course involves us in a very serious and dangerous situation."

Republican leaders generally regarded the President's announcement as a move outside the bi-partisan foreign policy. Privately, they said Republicans were not consulted in advance.

Chairman Kee (D-W Va) of the House Foreign Affairs committee said Mr. Truman was right in deciding against dispatch of American armed forces to Formosa.

"I believe the use of armed forces would be extremely dangerous in present conditions of world affairs and would very likely lead to involvement in another world war," Kee told reporters.

Republicans Ask Demo Aid To Get U. S. Out Of Red

By WILLIAM F. ARBOGAST
WASHINGTON, Jan. 5. — (AP) — Facing prospects of a \$42,000,000,000 presidential budget request, GOP lawmakers raised a call for Democratic help today to get the government out of the red.

They protested that expected income from taxes in the 1951 fiscal year will fall at least \$4,000,000,000 short of meeting the budget figure disclosed Wednesday by House Speaker Rayburn.

With some help from the democrats, they said, they can not only trim expenses enough to balance the budget for the 12 months starting next July 1, but might even save enough money for a payment on the national debt.

All that, they made clear, can be accomplished without even the "moderate" tax increase asked by President Truman in his state of the union message.

There were signs that democrats were listening with an attentive ear.

The republicans insisted that there be no tax increases—that a balanced budget be effected instead through rigid economies.

On both sides of the capitol, that sentiment found considerable favor with the democrats most concerned with tax legislation.

"The president wants a moderate amount of new taxes," said Chairman George (D-Ga) of the senate finance committee. "I want a moderate amount of expenditure reduction. Maybe we can get together."

LAX MOTORISTS CITED
PORTLAND, Jan. 6. — (AP) — City police have begun issuing citations against motorists who haven't their 1950 license plates.

But they pointed out that they wouldn't arrest anyone who could prove—by check stub or money order receipt—that he had applied for the license.


It was good they made that exception. Among the thousands of cars still driving about with 1949 plates are the police patrol wagon and city tow cars.

Song birds eat mistletoe berries as a winter food supply.

JUNGERS

Blufire HEATERS

MORE HEAT - LESS OIL



★ No Smoke
★ No Soot
★ No Dirt

RUDIE RITZMAN
1703 Brown Ave.
Phone 1066-J
Roseburg, Oregon

Vital Statistics

Marriage Licenses Issued
BONDELID-NELSON — Richard Albert Bondelid, Port Angeles, Wash., and Bonnie Yvonne Nelson, Roseburg.

County Demo Committee Meeting Date Is Changed

The Douglas County Democratic Central committee meeting, originally scheduled for Saturday, Jan. 7, has been postponed until Jan. 14, announced Mrs. Christina Micelli.

The reason for the postponement, she said, is that the State Democratic Central committee is meeting in Portland the afternoon of the 7th at 1:30 p. m. in the Multnomah hotel. A Jackson club dinner will be held Saturday night in the Cosmopolitan club ball room, with about 750 expected to attend.

Mrs. Micelli and her mother, Mrs. Annie S. Russell, left Thursday night for Portland to shop and attend the meetings in that city.

1950 Chevrolet Offers Automatic Transmission



As in 1949, Chevrolet's newest line of passenger cars offers two individually designed sedans. This is the Fleetline, so described because the curvature of the rear quarters follows body lines. Its beauty in exterior and interior treatment is visible to the eye with increased power and comfort highspotting chassis improvements. In addition, the company offers an automatic shift in the optional Powerglide transmission.

Inherited Dancing Girls From Egypt Create Problem

Chicago. — (AP) — What would you do if you inherited four beautiful Egyptian dancing girls?

A married Chicago business man, who says he is in that fix, thinks he might have the answer. "If worse comes to worse," said Christopher G. Janus, "I might bring them to Chicago to act as baby sitters."

Janus, 38, is in the general exportation and importing business. He is the present owner of Adolf Hitler's armored car. He gave this summary of his pleasant plight:

His uncle, P. Z. Aristophron,

UNPAINTED

Baby Wardrobes, Shelves and Chests
PAGE LUMBER & FUEL
4 E. 2nd Ave. S. Phone 242

Fri., Jan. 6, 1950—The News-Review, Roseburg, Ore. 7

died in Egypt in 1944, leaving Janus' late mother one-third of his estate. The estate included cotton plantations.

Under Egyptian custom, a property owner is responsible for the welfare of everything on his land—camels, donkeys and the workers and their families.

The families of the workers include 12 dancing girls, ranging from 16 to 22 years of age. Some of these girls entertain the plantation workers, but others have

branched out, appearing before larger audiences.

"My mother's share of the estate includes four of these girls, and it's a bit of a problem," said Janus.

"I don't know what to do about them and my wife doesn't either. Why these girls even require a special kind of food and none of them can speak English...."

"I don't think Mrs. Janus is very keen on the idea of bringing them over here."

J. E. CAMPBELL, M.D.

Announces that the location of his offices

After January 1, 1950

Will Be

Suite 303, Medical Arts Bldg.

Roseburg, Oregon

Phone 37

On display tomorrow— 1950 CHEVROLET

introducing *POWERglide* automatic transmission

Optional on De Luxe Models at Extra Cost

Chevrolet—and only Chevrolet
—brings you all these major advantages at lowest cost!

NEW STYLE-STAR BODIES BY FISHER
In sparkling new color harmonies



NEW TWO-TONE FISHER INTERIORS
extra-roomy—extra-luxurious



CENTER-POINT STEERING
with Utilized Knee-Action Ride



CURVED WINDSHIELD with PANORAMIC VISIBILITY
In Fisher Unisteel Bodies



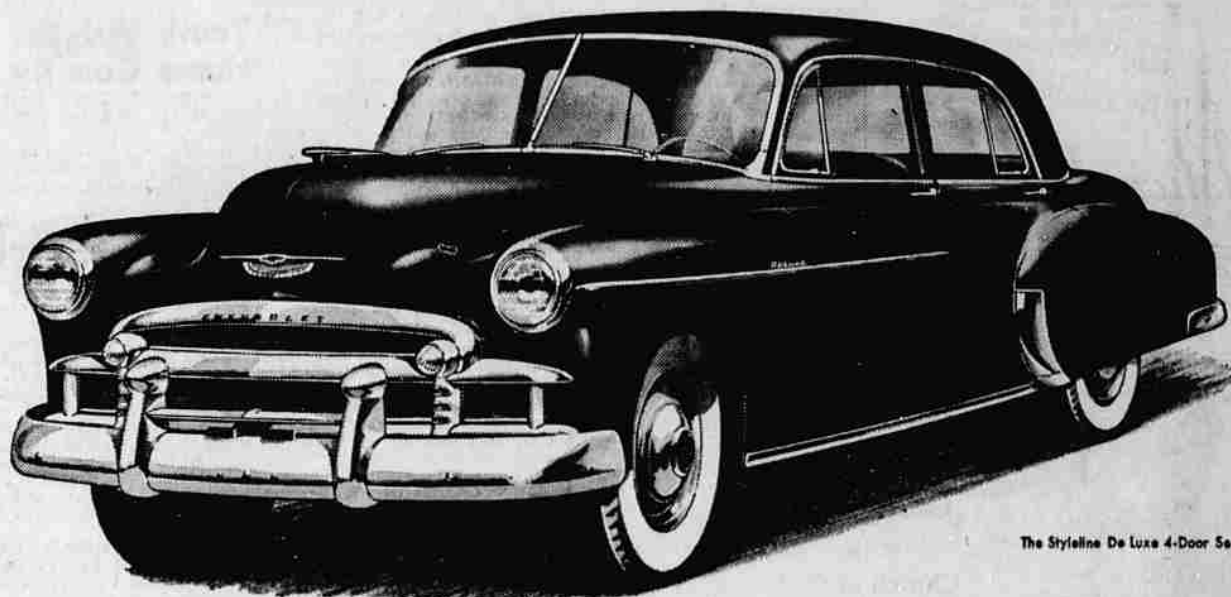
BIGGEST OF ALL LOW-PRICED CARS
longest, heaviest car in its field, with widest tread



LOWEST-PRICED LINE IN ITS FIELD
extra-economical to own—operate—maintain



PROVED CERTI-SAFE HYDRAULIC BRAKES
with Dabi-Life rivetless brake linings.



The Styleline De Luxe 4-Door Sedan

FIRST...and Finest...at Lowest Cost!

Chevrolet for '50 brings you the best of everything at lowest cost... greater beauty... finer performance with economy... outstanding driving ease, comfort and safety!

Here, in Chevrolet for '50, are the finest values the leader has ever offered to the motoring public.

These thrilling new Chevrolets are available in 14 surpassingly beautiful Styleline and Fleetline body-types. They bring you a choice of two great engines and two great drives—the Automatic Power-Team* and the Standard Power-Team—

described in detail below. And they also bring you quality feature after quality feature of styling, riding comfort, safety and dependability ordinarily associated with higher-priced cars, but found only in Chevrolet at such low prices and with such low cost of operation and upkeep.

Come in. See these superb new Chevrolets for 1950—the smartest, liveliest, most powerful cars in all Chevrolet history—and we believe you'll agree they're FIRST AND FINEST AT LOWEST COST!

ONLY LOW-PRICED CAR TO OFFER A CHOICE OF STANDARD OR AUTOMATIC DRIVING

AUTOMATIC POWER-TEAM*
(Built by Chevrolet—Proved by Chevrolet—Exclusive to Chevrolet)

NEW POWERGLIDE AUTOMATIC TRANSMISSION—for finest Automatic Driving (with no clutch pedal—no clutch pushing—no gearshifting). It combines with Chevrolet's new Economiser High-Reduction Axle to bring you an entirely new kind of driving... low-

cost automatic driving that is almost 100% effortless... it's the simple, smooth and thrifty automatic transmission. NEW 105-H.P. VALVE-IN-HEAD ENGINE (with Power-Jet carburetor and Hydraulic valve-lifters). Here's the most powerful, as well as the most thoroughly proved engine, in the low-price field... giving performance extraordinary... together with traditional Chevrolet economy in over-all driving.

*Optional on De Luxe Models at Extra Cost

STANDARD POWER-TEAM
(Outstanding for Standard Driving Ease... Performance... and Economy)

HIGHLY IMPROVED, MORE POWERFUL VALVE-IN-HEAD ENGINE (with Power-Jet carburetor and larger exhaust valves). The fine standard Chevrolet engine now made even finer... giving more power, more responsive pickup, greater over-all performance... plus the outstanding economy

for which Chevrolet has always been noted. THE FAMOUS SILENT SYNCHRO-MESH TRANSMISSION (with Extra-Easy Hand-E-Gearshift). Long recognized, by automotive engineers and the motoring public alike, as the pattern of smooth, quiet gear transmissions... assuring extremely simple and easy gearshifting... in fact, owners say easiest car operation, next to automatic driving itself.

America's Best Seller  America's Best Buy

Hansen Motor Co.

Oak & Stephens Phone 446