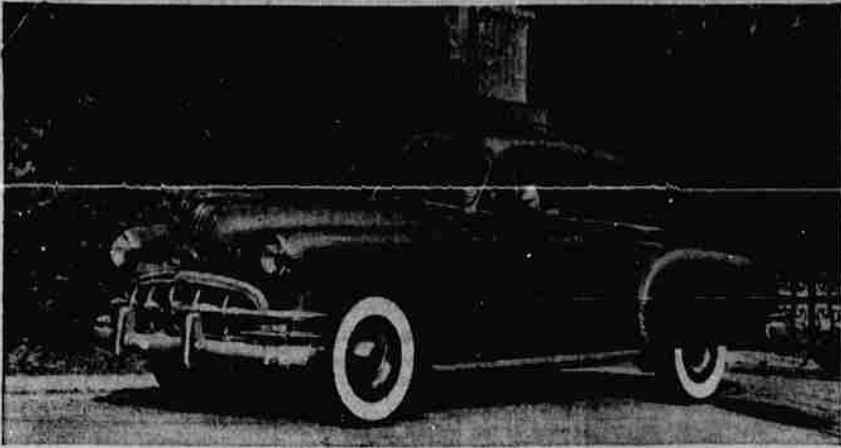


Sparkling New Pontiac Makes Debut



The enhanced beauty of the 1950 Pontiac is well exemplified in the dashing lines of the Streamliner two-door sedan pictured here. Pontiac again offers a wide variety of choice with two lines of cars, six or eight cylinder engines and Hydra-Matic or synchro-mesh transmission. The Hydra-Matic transmission is optional on all models at extra cost.

FINER FEATURES Make GMC Your Best Buy!



Real truck features . . . designed and engineered by truck specialists for the truck business . . . are packed into GMC's light and medium duty line. From the sturdy, handsome front ends to the rugged rear axles . . . from the big, comfortable cabs to the strong, deep chassis . . . from the powerful, valve-in-head engines to the quiet, easy-shifting transmissions . . . all models possess the all-truck features which enable them to do an economical, dependable hauling job . . . on ever job.

- Engines of "Army Workers" Design
- Full-Pressure Engine Lubrication
- High Efficiency Turbo-Top Pistons
- Tocco-Hardened Crankshaft
- Aluminum-Type Main Bearings
- 69" Curb Width
- 33" Door Openings
- Broad, Deep Adjustable Seats
- Ball-Bearing Steering
- Long-Life Hypoid Rear Axles



SMITH MOTORS Truck Division

Kert Kertesz, Mgr.

Highway 99 North

Phone 199-R-1

Witness Tells Of Bridges' Entry In Communist Party

SAN FRANCISCO, Nov. 29.—(AP)—A one-time associate of Harry Bridges threw the government's "Sunday punch" at the CIO longshore leader yesterday. Heralded as the person through whom the government hoped to establish Bridges' entrance into the Communist party, witness John H. (Big John) Schomaker told a federal court jury that Bridges had been a dues paying member of the party.

The Australian-born Bridges, who twice won out against efforts to deport him, is charged with perjury in testifying at his 1945 naturalization hearing that he had never been a Communist. With two union aides, J. R. Robertson and Henry Schmidt, he also is accused of conspiring to defraud the government.

Schomaker, a member of the group which in 1933 put Bridges into power in the longshore union, testified he was a section organizer for the Communist party on the waterfront as his territory.

Then he testified: He was present when an application for membership in the Communist party was given Bridges in 1933; he subsequently saw the application filled out in what he said was Bridges' handwriting; he and Bruce B. Jones, who also was present when Bridges was given the application, handed the application to Sam Darcy, then head of the party in California.

The 1934 waterfront strike, he said, was guided by Communists and "was largely Sam Darcy's brain child." Schomaker said he saw Bridges pay party dues to at least three different persons. He told of a speech in 1938 in which he said Bridges solicited membership in

Growth Of Moose Lodge Is Praised

Deputy Supreme Governor Al Nyback recently commended officers of the Roseburg Moose lodge, number 1037, on the rapid growth of the local organization. The remarks were rendered during Nyback's address Nov. 20. At that time, Roseburg Moose initiated a class of 33 candidates and were told that this lodge may have set a record for Oregon in membership growth.

Roseburg Moose Governor Jerry Willis also announced that preliminary plans are underway to form the Women of the Moose, auxiliary organization.

Represented by Dr. Allen Jones, the following candidates were initiated: Lloyd E. Mahugh, Clarence Long, Herbert J. Wirfs, Chris Schaffert, William Feigle, Stanley W. Post, John N. Hanley, George Finley, Jackie L. Cundiff, Robert N. Gunderson, R. B. Allen, Harvey H. Hale, Frank E. Nelson, P. R. Carpenter, Richard L. Tucker.

Schomaker said he attended numerous Communist party meetings at which Bridges and Schmidt were present. Sam Darcy, the witness went on, periodically sent orders to Bridges through Schomaker, during the 1934 strike. "Mr. Bridges," the witness testified, "was under the discipline of the Communist party and he had to carry them out."

COMMENDATION WON
Two Roseburg men, Earl A. Olson, storekeeper second class, USN, and Lloyd D. Olson, seaman apprentice, USN, of 702 Fullerton street, have received a "well done" from Admiral Forrest P. Sherman, USN, newly appointed Chief of naval operations, who was commander of the Sixth task fleet to which the Navy men's ship, the destroyer USS Turner, is attached.

HOUSING ALLOTMENT
WASHINGTON — (AP) — The Public Housing administration has allocated 1,221 units of low-rent housing to Seattle. They are to be built by the Seattle Housing authority. It applied for a \$272,100 loan to pay for planning. The loan must be approved by President Truman. The government will finance construction if private financing is not available.

FIRE HITS BARRACKS
VANCOUVER, Wash., Nov. 28 (AP)—A fire swept through the lower floor of a building at Vancouver barracks early today, and destroyed some records. Among the burned records were those of the Oregon headquarters of the Officers Reserve corps.

SLABWOOD
in 12-16 and 24 in. lengths
OLD GROWTH FIR
DOUBLE LOADS
WESTERN BATTERY
SEPARATOR
Phone 858

FOR FAMILY AND FRIENDS SERVE

Columbia Ale
TOP O' THE TANK
IN THE DISTINCTIVE GREEN BOTTLE

COLUMBIA BREWERIES, INC. © TACOMA, WASHINGTON
Distributed in Roseburg by Bates Candy Co.

Sutherlin Plans Santa Welcome

By MRS. BRITAIN SLACK

For the third consecutive Christmas, Sutherlin organizations will play host to Santa Claus. Plans and preparations are rapidly gaining form to assure of St. Nick of the warmest welcome ever.

According to information received by the local committee, Santa will arrive in Sutherlin sometime Wednesday evening, Dec. 21. The committee also reports that they are not certain whether the celebrated visitor will use his reindeer and sleigh this year, but whatever his means of transportation, they are assured that he will have treats for all.

Among the organizations that have signified their intention of taking part in the annual civic project are the Volunteer Firemen, Associated Business Women's club, Lions club, Lady Lions, American Legion, Sutherlin grange, Fair Oaks grange, Sutherlin Rebekah Lodge No. 218, Eagles lodge, Parent-Teachers association and the Saddle club.

Representatives of these groups met at the city hall for their first meeting Thursday evening, Nov. 17, and the overall plan of the project was discussed. At the meeting held Tuesday evening, Nov. 22, the group elected Mrs. Helen Squier as chairman.

Dependable Performance with a DISSTON CHAIN SAW
with Mercury Gasoline Engine

Designed and built by Disston, America's foremost saw manufacturer, this is the saw you need to lower your costs and step up your production. It's easy to operate, and built for trouble-free service. Let us give you all the facts about the Disston Chain Saw with Mercury Gasoline Engine. Come in and talk it over.

CARL J. PEETZ
920 S. Stephens
Phone 279

Montgomery Ward
Roseburg, Oregon
Phone 95

Christmas-tagged with Cut Prices!

M-W GAS RANGES

M-W SUPREME GAS RANGE
Reg. 199.95
189.00
ON TERMS: 500 DOWN Up to 24 Months To Pay

M-W DELUXE QUALITY GAS RANGE
● 40" seamless 1-pc. top
● Seamless 18x20" oven
● Convenient time minder
● Fluorescent lamp
Reg. 174.95
164.00
On Terms: \$5 down, \$8 a month

Here's a Christmas gift for the house that will bring satisfaction long after the Holidays have passed! This model has the same divided cooktop as the Supreme range above, allowing plenty of work space. The smokeless porcelain broiler is below the oven. Chrome trim on door handles and the oven vent.

M-W STANDARD QUALITY GAS RANGE
● 40" seamless 1-pc. top
● Seamless 18x20" oven
● Plenty of storage space
Reg. 139.95
129.00
On Terms: \$5 Down, \$6 Mo.

This full-size, modern gas range will give you every cooking convenience . . . for a very modest price! The same excellent porcelain finish, seamless easy-to-clean top, and large seamless oven, as in the above ranges. Complete with broiler and storage space for utensils, too. Savings for the budget-conscious family!

ATTENTION! '40 to '48 Car Owners!

THIS . . . becomes THIS!

Super-Cushion TIRES by GOODYEAR

That's right—rough roads that bounce and jar your car on conventional tires smooth out like magic with big, soft, low pressure Super-Cushion tires. They're really sensational—better than conventional tires in twelve important ways—and lower cost in the long run! Put a set on your car and enjoy a new car riding thrill!

No need to wait 'till your present tires wear out . . . we'll buy the unused mileage in your old tires.

EASY TERMS!

CARTER TIRE CO.
444 N. Stephens
Phone 1683