

FARM and GARDEN NEWS

PMA Nominees For Douglas County Will Be Mailed Out Dec. 5 To Eligible Voters

Ballots listing the names of nominees for community Production and Marketing administration committees and delegates to the county convention which selects the county PMA committee will be mailed Dec. 5 to all known eligible voters in Douglas county.

J. F. Bonebrake, present county PMA committee chairman, urges that voters mark their bal-

lots and return them to the county office immediately. Ballots will be accepted in the county office until Dec. 15, at which time they will be counted and the names of successful candidates announced.

Nominees for community committees and delegates in the county's ten agricultural communities are as follows:

District I, Cow Creek community: G. G. Johnson, Joe W. Payne, Louis Brady, J. B. Moore, Frank Hill, Sam Flory, Joe Foreman, from Glendale; Bob Head, C. M. Crampton, Hiram Houck, from Azalea.

District II, Riddle community: Ivan Wortham, Roscoe Ball, C. Walsh, Earl Smith, Elbert Ball, S. R. Nichols, E. S. Pruner, Herman Mauer, Lewis Newton, Darrell Carter, from Riddle.

District III, Days Creek-Canyonville: Ralph Weaver, Canyonville; Delbert Poole, Days Creek; Lawrence Michaels, Canyonville; Tom F. Epping, Days Creek; C. V. Storey, Days Creek; Clem Tavernier, Roseburg; Wade Worthington, Canyonville; delegates nominated were Lawrence Michaels & Frank Brown.

District IV, Myrtle Creek community: E. W. Hollinger, A. E. Burton, Jake Tavernier, Art Moan, John Lyons, John Wallen, Delbert Trask, Fred Neale, Frank Matthews, James Lewis, from Myrtle Creek.

District V, Roseburg community: Louis Kohlhaagen, O. J. Schaeffer, Charles Dyer, all of Roseburg; John Amache, Winchester; Donald Harmon, Clifford Hess, R. C. Busenbark, Ray Doerner, Bert Young, V. T. Jackson, Frank Grubb, Carl Gilbreath, all from Roseburg.

District VI, Camas Valley-Tenmile community: Jim Henry, J. B. Stackhouse, Wayne Brettenbacher, all of Tenmile; Ernest Wheeler, Camas Valley; Arnold Roberts, Brockway; Jack Parrot,

Camas Valley; Howard Milton, Camas Valley; Harold Nichols, Brockway; H. C. Schattenkerk, Brockway; E. E. Baker, Roseburg.

District VII, Oakland-Sutherland community: George Wilcox, George Chenoweth, Harold Riggs, Glenn Walker, Walter Slater, Alva Manning, Wayne Rice, Charles Davison, Dale Balmbridge, all from Oakland; Harry Norton, Sutherland, and L. Murphy, Umpqua.

District VIII, Elkton-Kellogg community: Eugene Fisher, V. K. Holcomb, Ross Hutchinson, R. D. Minter, J. B. Rader, George D. Madison, all from Oakland; Howard Carnes, Lloyd Smith, Leslie Hancock, Elmer Schad, C. G. Hedden and J. W. Gorman, all of Elkton.

District IX, Yoncalla-Drain community: R. L. Bridges, Fred Swearingen, Chester Rydell, all of Drain; Herman Thiele, L. W. Wise, E. K. Mulky, Fred Lee, Frank Booth, Gerald Johnston and D. C. Wilson, all from Yoncalla; E. F. Strong, Oakland.

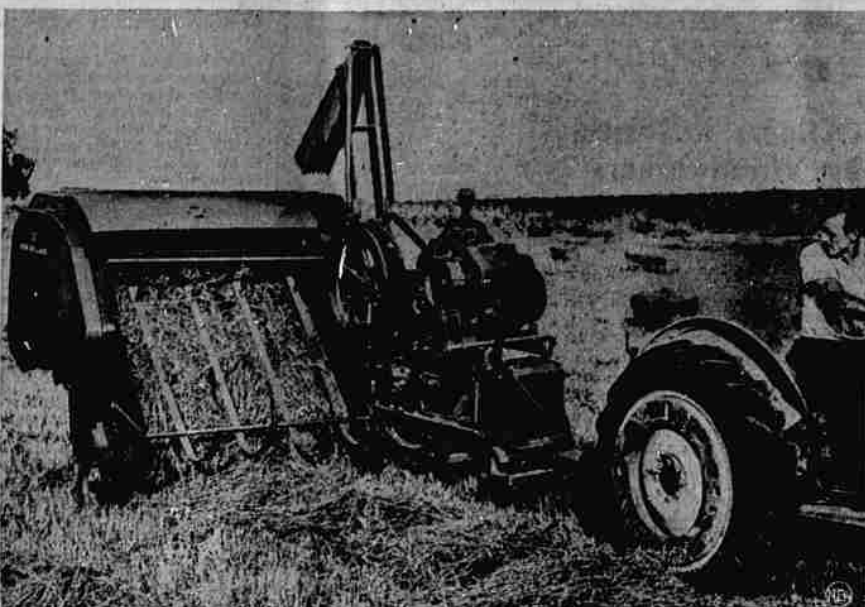
District X, Reedsport community: George Parker, Lakeside; Wesley Harrison, Carl Dawson, Paul McAllister, O. R. North, Edmond Eyriz, George Smith, Lawrence Cokeram, Robert House, E. G. Dunn, all from Reedsport.

Nominees were selected earlier by nominating committees composed of three eligible voters from each community. J. F. Bonebrake explained. Voters may "write-in" names of other eligible persons on the ballot, however, Election to each position will be by plurality vote.

The duties of farmer committees include recommending programs, action, determining acreage allotments, and otherwise administering federal farm programs; choosing conservation practices for which federal assistance is offered in Douglas county; allocating among farmers the funds available for meeting agricultural conservation needs; and handling price support operations, including commodity loans and purchases.

CATTLE PRICES DOWN
PRINEVILLE. — (AP) — The Crook county Hereford association's annual sale wasn't so profitable as usual.

Prices for the 80 young steers and heifers averaged about 10 cents a pound below last year's 32-cent average. The highest price paid was 31 cents.



HAY BALER TAKES ON SLEEK LINES—This new, streamlined hay baler was just introduced at New Holland, Pa. The 1950 model has 20 per cent fewer parts than older balers. It scoops up the hay, slices it and presses it into wrapped bales, all automatically, at the rate of seven bales a minute.

21,000,000 Idle Acres Said Calling For Answer In 1950

By OVID A. MARTIN
Associated Press Farm Reporter

WASHINGTON, (AP)—What is to be done with upwards of 21,000,000 acres of idle farm land in 1950?

This question is worrying government farm officials and the owners of the land. This acreage represents the amount of land which the agriculture department has asked or will ask farmers to take out of the production of cash crops.

The answer affects not only the farmers but city workers, consumers and taxpayers generally. The department says crop production on this land—about seven per cent of the total acreage harvested in recent years—is no longer needed. During and since the war this land produced to meet shortage needs abroad but overseas markets are falling off as production recovers in war-affected areas.

Crops for which smaller 1950 acreages are planned include wheat, corn, rice, cotton and potatoes.

Under its crop control and price support program the government has the means to get smaller acreages of these crops. No Cuts, No Price Support. In the case of crops besides cotton, price supports can be denied those who do not make their proportionate cut in plantings.

But what is to keep the corn farmer, for example, from planting oats, rye, barley, soybeans or other crops on the land taken out of corn?

Or, what's to keep the cotton farmers from planting similar crops, including corn, on land "taken out" from cotton?

In other words, it would be possible to take land out of corn to prevent surplus in that crop, only to see it used to produce a surplus of other crops. Thus little would be gained in the government's battle against farm surpluses.

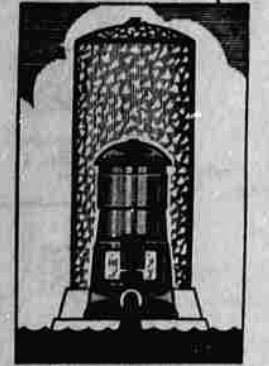
Could Cut Farm Income Whatever is done with these

extra acres will influence city folks. If 20,000,000 or more acres are taken out of production fewer people would be needed to operate farms. That could mean increased migration of farm folks to the city to compete for jobs there.

Also it could mean further reduction in farm income—with accompanying reduction in rural demand for city goods and services. Or, if the land is diverted to production of surpluses in other crops, the taxpayer must carry the burden of government price supports.

The government would like to have this extra land put into grass and pasture for greater livestock production. But it takes time to get income from land changed from cash crops to livestock, and many farmers are unable to wait.

Sash weights, window cords and pulleys were invented by the Dutch about 1650.



UNIVERSAL PUMPS AND WATER SYSTEMS

FOR DEEP AND SHALLOW WELLS
Single Stage
Multi-Stage
JET-TYPE WATER SYSTEMS
IDEAL FOR HOME, FARM AND INDUSTRIAL USE
DISTRIBUTED BY
W.M. SANDALL CO.
PLUMBING FIXTURES AND SUPPLIES
UNIVERSAL PUMPS - NASON PAINTS
1804 N. STEPHENS PHONE 1117-R

THE FEED BAG

PUBLISHED WEEKLY BY THE DOUGLAS COUNTY FLOUR MILL,
MAKERS OF UMPQUA CHIEF FLOUR AND UMPQUA BRAND POULTRY & DAIRY FEEDS

Vol. XI, No. 46 Nov. 28, 1949.

Our Specialty

We want to give a section of our customers some advice. Giving advice has always been one of our most pleasant occupations, and it has practically become a specialty with us. It's always free, and if you don't follow it, you haven't lost anything. If you do follow it, and it turns out all right, we all profit.

The hatching egg business has come to a sorrowful pass. Nobody wants chix now. Fryers don't bring the cost of production in places where fryer producers can't buy UMPQUA HILO BROILER MASH. So they just up and quit the business.

Fryers are about a nine-week crop nowadays, with all this new-fangled feed, so it will be about nine weeks until the nation will be crying for fryers, and the price should go up. Now, we aren't advising you to go into the fryer business. If we should be wrong, you couldn't forget it in nine weeks, and you'd be on our neck.

But, if we are right, your hatching eggs will be in tremendous demand about Jan. 1st to 15th, and from then on. So why not take those hatching eggs you can't sell this week and next, and have them custom-hatched, and get ready for some early eggs next summer?

It has been proved time and time again that the early chix are the money-making egg producers. They are ready to lay during late summer and early fall when eggs are scarcest and highest-priced. Besides you can fatten on about 15 months production from pullets hatched in December and January, compared to eleven or twelve from late hatched birds.

As to the outlook for your making money with eggs next year, whether you produce hatching eggs or commercial. Well, it looks as good as, or better than at this time last year. Feed prices may not drop much, since our good Uncle Sam will hold up the prices of feed grains, but still, feed shouldn't go up, either, unless we get devaluation, or something. And feed is lower now than at this time last year.

Besides, eggs have made a good poultryman money every year since we can remember. And that's lots of years. And now that the Coast is on an import basis, the market is better than ever. Yep, we say, "play it mart; hatch the eggs you can't sell now, and be all set for big profits next fall."

I was so cold last night I could hardly sleep. Did your teeth chatter? Don't know. They don't sleep with me.

Uncle Hank Says—

FAST AUTOMOBILES ARE OKAY BUT WHAT WE NEED ARE SLOWER PEOPLE.



Ring the Bell
UMPQUA FEEDS have been ringing the bell with Douglas County farmers for considerably over a half century. In that time, a fine reputation has been built up, and thanks to all you good customers, we are proud of ours.

Now, we have gone modern again. We have a rubber rope stretched out from each door. When you drive over it, close to the MILL, it rings a bell. The boys like to have you drive close enough to ring the bell, as they don't have so far to carry the sack to your car.

Besides, now that so many turkeys have reached a prime finish on UMPQUA TURKEY FEEDS, and have gone to market, feed business isn't what it used to be. So after the boys get the sweeping and dusting done, they are likely to retire to the "four room," where we keep that good UMPQUA CHIEF FLOUR, and take a nap, or maybe get into a game of dominoes. So the bell brings them out of hiding with their eyes open.

We love to give good service, and that's why we say, "Ring the bell for service."

"I never felt so punk in my life." "Do any drinking last night?" "Yeah, and when I went to bed I felt fine. And now I feel terrible." "Must have been the sleep that did it."

Daily Culling
Some ladies make a living keeping boarders. But we never knew a poultryman to do it. Oh, we know many poultrymen who keep boarders, but what we meant is, they don't make money that way. They mostly make money in spite of keeping the boarders. And it takes a couple working hens to pay the board of each loafer.
Culling out these non-producers will not only cut your ex-

penses, and automatically increase your profits, but will many times prevent an outbreak of disease. Non-producers are that way often because they are sick, or already sick, they are easy victims to any disease that happens along. Best get them out of the flock. Your other birds need the room.

Up to Date and More
Since the tremendous increase in population in Douglas County, the DAIRY BUSINESS has come to the front as a leading industry. This, in turn, has brought a demand for every type of dairy feed. Our old reliable UMPQUA MILKMAKER has been amply proved to be one of the outstanding dairy feeds in the state for years, both in quality and price.

But, to satisfy the demand for a new type of dairy feed, we are starting at once to manufacture a new dairy feed. This feed, like all other UMPQUA FEEDS, will be made from the same clean sweet ingredients as all our feeds. It will be properly balanced, strongly fortified with necessary vitamins, the highest quality proteins, and the right amount of minerals.

It will be called UMPQUA DAIRY RATION, and will carry 16% protein as a guaranteed minimum. The price will be the same as UMPQUA MILKMAKER at present, \$3.75. It will be more bulky than MILKMAKER, which is desirable in many instances, since it will contain ROLLED barley and oats, instead of ground grains, and will also contain beetpulp, cottonseed meal, yeast and—well, come in and take a gander at the formula. Remember, all our formulas are open to the inspection of our customers.

As of Jan. 1, 1950, regular UMPQUA MILKMAKER will be increased to a guaranteed minimum of 18% protein, to satisfy the demand for a higher protein dairy feed. As in all other UMPQUA FEEDS, the formula will be revised to include all the new information on feeds and feeding which has developed in the current year.

Foreigner (to waitress): "What is your average tip?"
Waitress: "Fifty cents, sir."
After the foreigner had given her the 4 bits, she added: "But you're the first customer that ever came up to the average."

WE GUARANTEE your cow will like our new UMPQUA DAIRY RATION, and that as is always usual, you will be satisfied with our price on it. It's quality!

Azalea Student Wins Journey To 4-H Congress

UNIVERSITY OF OREGON, Eugene, Nov. 28—A freshman co-ed in the university, who plans to make a career in journalism, has already a good start toward a career in quite a different line—dressmaking.

Mary Lee Rust, from Azalea, in Douglas county, was chosen as a state 4-H winner in clothing achievement and was one of 14 division winners to spend the Thanksgiving holidays in Chicago at the 28th National 4-H Club Congress. And, like the other winners, all of her expenses were paid. She was a guest of Spool Cotton Company of New York city.

The first step toward this state award was when Mary Lee won the Douglas county medal of honor. She then took her work to the state fair and was selected grand winner in the clothing division.

A 4-H club member for seven years, Mary Lee was leader one year in a cooking class, as well as being assistant leader for three years. For two years she placed second in the state fair \$1 dinner contest. Her favorite projects have been clothing, cooking, poultry, gardening, canning, sheep and health.

But now she is preparing to go into journalism by taking the pre-journalism course in the University of Oregon.

Mary Lee, representing the 26,000 4-H club boys and girls in Oregon, left for Chicago on Thanksgiving day. But she didn't miss her big turkey dinner—that was held for her last Saturday.

All Oregon Counties In OSC Student Body List

OREGON STATE COLLEGE—Every Oregon county is represented among the 3739 Oregon students who make up all but about a thousand of the total student body of 6791 this fall.

Forty-two other states with 906, three territories with 39, and 22 foreign countries with 107 students, comprise the remainder of the total registration.

Multnomah and Benton counties account for about 40 percent of this fall's total, though many who give Benton county as home are married students who moved here to attend college. Next in order are Marion, 399; Lane, 230; Clackamas, 227; Linn, 217; Washington, 212. Wheeler with six has the least.

California leads other states with 418, followed by Washington, 188; Idaho, 69; Montana, 23; and Illinois, 20 and New York, 19. China and Canada with 26 each lead the foreign countries, followed by India with nine and Egypt with seven.

OSC Alumni Association Sets Regional Meetings

OREGON STATE COLLEGE—Four regional alumni meetings in southern Oregon December 6 to 9 have been announced by the O.S.C. alumni association under a new policy of "taking the campus to the alumni" to the extent possible. Other sections of the state will be visited in winter and spring terms.

Meetings are scheduled at Grants Pass, Klamath Falls and Medford on successive days. Accompanying President Lloyd Carter, Portland, president, and Bob Knoll, manager, will be Dr. Clifford Maser, dean of business and technology, representing President Strand, and Chalmers "Bump" Elliott, backfield football coach.

Oregon Officers Prepare For U. S. Romney Meet

Annual business meeting of the American Romney sheep breed association will be held in the federal building at Eureka Calif., November 29. It has been announced jointly by R.M. Knoll, Gold Beach, association president, and H. A. Lindgren, O.S.C. extension animal husbandry specialist and secretary.

A special program is being arranged in addition to the business session.

For "Tops" on Drainboards
See Phil Durnam
Lino'eum Laying and Venetian Blinds
920 S. Main 1336-J

Only Whirlpool AUTOMATIC WASHER

has Suds Miser and the Seven-Rinses

Suds Miser
boards soap and water for you... makes sudsy water get the whole family wash cleaner, brighter than ever!

Seven-Rinses
—four pressure spray rinses, then a deep agitated rinse, then two extra spray rinses—mean no soapy residue to dull whites, dim colors!

See the wonder-working Whirlpool today. See the Agiflow Action that washes clothes cleaner, faster. See the ultra-violet lamp that sweetens and freshens clothes. See the Cycle-tone Signal that ends clock-watching... plus many, many more wonderful features, including: Completely Automatic Operation • Flexible Timing • Handy Top Loading • Nine-Pound Capacity • Five year warranty on transmission. • It's the finest washer money can buy. It's the Whirlpool automatic!

Bergh's Appliance
1200 S. Stephens Phone 803
See the New Whirlpool Automatic Clothes Dryer Today!

Unique Christmas Tree Cutting Plan Is Inaugurated

Polk county, through the Dallas Chamber of Commerce, has inaugurated an unusual Christmas tree plan that has nationwide possibilities, according to George Spaur, acting state forester.

Spaur states that all farmers in this county having land where Christmas trees can be cut, agreed to register with the Dallas Chamber of Commerce. The farmer is given a sign which he places on his mail box stating "Xmas Trees Are Available Here." Each store in Dallas has a list of such farmers for any prospective customers. This plan enables people to find their Christmas trees easily and at the same time reduces the chance of willful trespass and harmful cutting that takes place every fall all over the country. The Christmas tree plan was developed by Bill Dalton, president of the Dallas Chamber of Commerce.

Spaur points out further that such farm woodlands under proper forest management can be the means of considerable annual income to the owner. He urges that these owners take advantage of the farm forestry service given by the state forestry department. Anyone interested can obtain this assistance by writing to the state forester at Salem.

General Logging Supplies

- Skookum Blocks
- Mall Power Saws
- Lincoln Welders
- Coos King Donkey
- Waco Wheel Arch
- Wire Rope
- Disston Power Saws
- Lincoln Welding Rod
- Expert Sled Builder Available Anytime
- Splicing and Ferrule Work
- Expert Saw Mechanic

PITCO of ROSEBURG, Ltd.
1819 N. Stephens
Phone 733-L Evenings Phone 1241-R

GET THE JUMP ON THE JOB

MAKE A DATE RIGHT NOW FOR US TO PUT YOUR FARM MACHINES IN SHAPE TO WORK!

Right now—ahead of season—is the time for you to be planning to get every farm machine and every piece of equipment in shape. We make the planning easy. Just drop in or call us. Together we can determine the dates and arrangements for putting your machines in first-class running order.

Avoid costly breakdowns in the field. Let us service your machines ahead of season and save you money. All work done in our shop is top quality work. Experienced mechanics! Latest tools and equipment! Genuine IH Parts! Don't delay! See or call us TODAY!

SIG FETT

527 N. Jackson Phone 1150

INTERNATIONAL HARVESTER SERVICE