



(NEA Telephoto)

NAVY SECRETS 'LEAK'—Documents secretly slipped to newsmen in Washington, D. C., pictured U. S. navy morale as shot to pieces and the nation's security imperilled under the present unified defense setup. The documents included a statement by Adm. Louis Denfield (left), chief of naval operations, that a "navy stripped of its offensive power means a nation stripped of its offensive power." In one of the documents Vice Adm. Gerald F. Bogan (center), commander of the 1st Task fleet in the Pacific, was quoted as declaring that morale has fallen "almost to despondency" because of a belief that the country is being "sold a false bill of goods." Also included was a statement by Adm. A. W. Radford (right), commander-in-chief of the Pacific fleet. That a majority of officers in that fleet concur in views expressed by Naval Capt. John Crommelin, who claims that morale among navy officers is shot to pieces because they believe the air force is taking over the military establishment.

Northwest Prepares To Combat Power Shortage

SEATTLE, Oct. 7 —(AP)—The Pacific Northwest is getting ready for another winter of electric power shortages.

Chairman Owen Clarke and Raymond Clifford of the State Public Service commission said the agency expects to issue an order next week to outline a program for private power companies.

Municipal systems and public

utility districts have scheduled two group meetings for mid-month to consider the prospective problem.

One of the meeting groups will be the Pacific Northwest utilities conference committee. Clifford Erdahl of Tacoma, its head, expressed the hope the meeting will lead to uniform action by private and municipal operators.

Bonneville Power administration officials said earlier this week that power for aluminum reduction plants may have to be cut in a few weeks. The declining level of the Columbia river, and the prospects of the same in the Grand Coulee dam reservoir, are responsible.

Best-Known
home remedy to relieve
miseries of child's cold
RUB ON VICKS
VAPORUB

General Logging Supplies

- Skookum Blocks
- Mall Power Saws
- Lincoln Welders
- Coos King Donkey
- Wire Rope
- Disston Power Saws
- Lincoln Welding Rod
- Waco Wheel Arch



- Expert Sled Builder Available Anytime
- Splicing and Ferrule Work
- Expert Saw Mechanic

PITCO of ROSEBURG, Ltd.

1819 N. Stephens

Phone 733-L

Evenings Phone 1241-R

Phone Company Rejects Proposal To Settle Dispute

SPOKANE, Oct. 6. —(AP)—The Pacific Telephone and Telegraph company has rejected a National Labor Relations board proposal for settling union charges of unfair labor practices, a union spokesman said yesterday.

President Bernard Elsom of the Spokane local of the CIO Communications Workers of America said "the NLRB proposed that the company recognize the CWA as collective bargaining agent for its employees and restore canceled contracts."

The company last May canceled contracts with CWA locals representing 8,000 workers in Washington and northern Idaho. The company said the action was taken because of "unwillingness of the union to be realistic toward" company wage offers. The union filed charges of unfair labor practices.

Elsom said the NLRB asked both parties to bargain for a new contract for at least 60 days under NLRB supervision.

He said the company rejected a proposal that it should pay back wages to 30 employees suspended in Seattle, Tacoma and Olympia after "protest meeting" work stoppages. The company also asked for a new election to determine a bargaining agent for workers, Elsom said.

Company officials withheld comment.

Atomic Plants Subject To Water Pollution Act

WASHINGTON, Oct. 7 —(AP)—Atomic Energy plants are subject to the Water Pollution Control act of 1948, Mark D. Hollis, assistant surgeon general of the Public Health service, said Wednesday.

Hollis said the health service considers that such plants are subject to the act because they produce radioactive waste.

If radioactive waste is found in streams, those streams are polluted, Hollis told the Water Pollution Control Advisory board. He added that in view of security requirements, the problem must be handled in close collaboration with the Atomic Energy commission.

"We should be getting set for the probable emerging problems that are adding further to water pollution as a whole," Hollis said.

The board, concluding a two-day meeting, recommended that a "firm attitude" be taken in enforcement of the Water Pollution Control act.

Suburbs Of Lebanon To Vote On Annexation

LEBANON, Oct. 7 —(AP)—A vote on whether areas west and south of here should be annexed to the city will be held Nov. 22.

The areas have an estimated population of 2000. If added to the city, Lebanon's population would be about 10,000, on the basis of Postmaster Merrill Smith's estimates.

The Suburban areas have petitioned for the annexation and the Lebanon council set the ballot date.

Before the year 1001 Swedish rulers were known as Kings of Upsala.

For "Tops"
on Drainboards
See Phil Durnam
Linoleum Laying and Venetian Blinds
920 S. Main 1336-J

No Matter Where You Live . . .
You Can Enjoy Tank Gas Service

LP GAS
THE MODERN FUEL
Beyond the Gas Main
Propane Tanks for Rent
NO NEED TO BUY
UTILITY SERVICE
Pacific Bldg.
Roseburg Phone 235

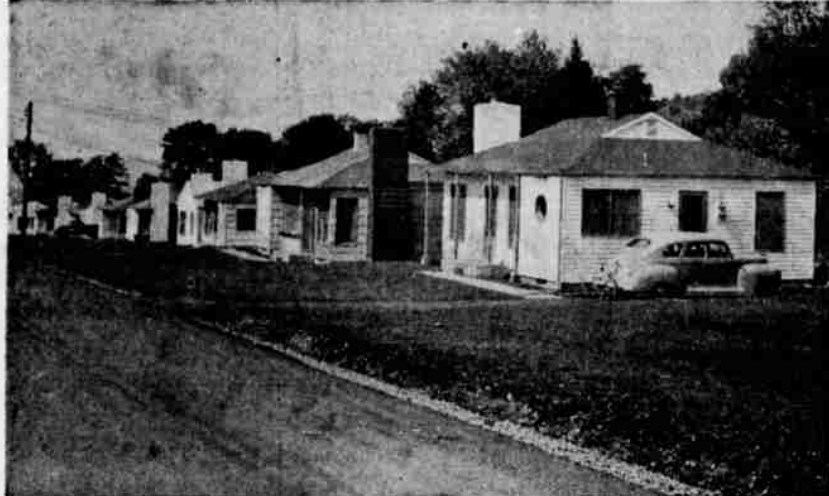
"I Compared And I Bought"

. . . says Jerry Harkins
Manager, Outdoor Store.



"I bought a Cloverdale Park Home for a lot of reasons . . . I liked the construction, the floor plans, the color scheme . . . but the deciding issues were the paved streets and driveways, the water system, the fact that every detail had been attended to, there were no "odds and ends" left up to the owner. It's a buy we couldn't pass up; we're glad we bought our new home in Cloverdale Park."

Are YOU Paying Rent?
If you're one of the many folks paying rent — throwing somebody else's home, you're actually actually LESS than rent. Because for payments insurance, you can own your own home — a truly FINE home in Cloverdale Park. Dubious? Sounds too good to be true? Then see for yourself, inspect the Cloverdale Homes to your heart's content, ask for indisputable proof that Cloverdale Homes are all we say. Ask those who own Cloverdale Homes. We know that if you arrive at Cloverdale Homes, investigate about the value of these homes and then enthusiastic about Cloverdale Park. Just phone 1566 and we'll furnish the transportation.



Open Sunday

Drive out Sunday, it's a pleasant drive and we promise you'll be glad you came. Drop in at Fies & Clute office then inspect the model homes. Cloverdale Park is open 9 a.m. to 8 p.m. every day.

\$500 Down

buys a Cloverdale home. Eligible veterans can buy with no money down. Payments are like rent. Small additional payments buys a home completely furnished.

10 MILLION REASONS- FRIGIDAIRE Is America's No. 1 Refrigerator!



More than 10 MILLION Frigidaire refrigerating units have been built and sold—your best assurance of years of dependable, economical service! Come in and learn about the many other reasons why Frigidaire is America's No. 1 Refrigerator. See the newest, the finest Frigidaire of them all! It's the new

1949 COLD-WALL IMPERIAL WITH LOCKER-TOP

Locker-Top freezes food, keeps up to 70 lbs. frozen food for months. Cold-Wall compartment keeps food fresh for days without covers of any kind—never needs defrosting. Super-moist Hydrator holds nearly 1/2 bushel fresh fruits, vegetables. See ALL the features of this great new Frigidaire. Here are a few of them —

- Quickube Trays make 8 lbs. ice
- Glass-topped, full-width Hydrator
- Cold-Wall Compartment keeps food moist-fresh
- Basket-Drawer for eggs and small parcels
- Runs for months without defrosting
- 2 Multi-purpose Trays for meat storage
- Famous Meter-Miser mechanism
- 5-Year Protection Plan

1949 IL-100
\$449.75
Other models from
\$189.75

There is a Frigidaire to meet your individual needs—3 types—9 models.



UMPQUA VALLEY APPLIANCE

120 W. Oak

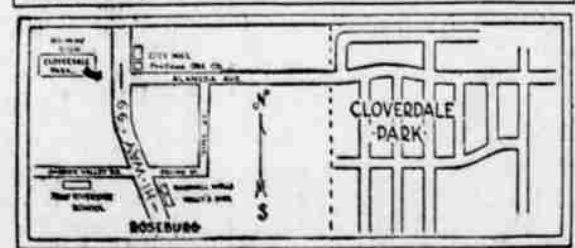
Phone 1218

What do YOU want in a home?
Take a pencil and check the features you want in a new home . . . see how your desires compare with the features you get with a Cloverdale Home.

() Plenty of roomy closets	() Lots of built-ins in kitchen
() Tub and shower combination	() Colorfully decorated
() Paved streets and driveway	() Lots of large windows
() Oil fired forced air heating plant	() First class plumbing
() Weather stripped	() Sewer, water and electricity
() Oversize lot	() Asphalt tile floors
() Wood burning fireplace	() Convenient, attractive room arrangements
() Non-stick windows	() Full insulation in bathroom
() 40 gallon electric water heater	() Extra electric heater nearby
() Within five minutes of city center	() Excellent school nearby
() Near city bus line	() Cheerful kitchen
() Planted lawn and landscaping	() Exclusive neighborhood

These features are yours with a Cloverdale Park Home
F. H. A. Approved
Low down payments—low monthly payments

CLOVERDALE PARK CONVENIENT TO SCHOOL, STORES AND CITY CENTER



HOW TO GET TO CLOVERDALE PARK

Drive north on Highway 99 to Alameda Avenue (see the Cloverdale Park sign on the right) and turn right. Drive straight into the park.

3 reasons why you should buy a Cloverdale Home

1. Better Construction
2. Small Down Payment
3. Exclusively Residential

Compare these homes with any in the state—you'll see why we're so proud of Cloverdale Park Homes.

FIES AND CLUTE REALTY

Phone Roseburg 1556