

Employment Rose During August Report Reveals

Employment in Douglas county rose perceptibly during the month of August. Several firms in the lumber industry resumed operations after shut-down periods of various lengths. Production was somewhat hampered by the annual railroad car shortage which has resulted in stockpiles of lumber that cannot be shipped until the shortage of transportation has been alleviated.

The harvest of the local bean crop, completed by the third week of the month, caused a period of unemployment for agricultural workers. This was of short duration, however, because the prune harvest is now under way, and that will be followed by the picking of walnuts.

An estimated decrease of 25 percent in the total of unemployed persons was noted, and it is believed that there should be no marked change until the rainy weather closes the dirt roads to trucking.

Reports from employers in retail trade indicate that employment trends, while not at the levels of one year ago, are holding steady and should increase by December. Construction work is active; and, as far ahead as can be determined, it appears that there should be little falling off in this field.

In an attempted forecast of employment for the coming winter months, the fact that little logging is expected to be done must be considered. Many mills have stockpiles of logs that will carry them through the winter. It is believed this fact will keep the majority of the mills in operation and help to hold the employment total up to a slightly higher level than that of last year.

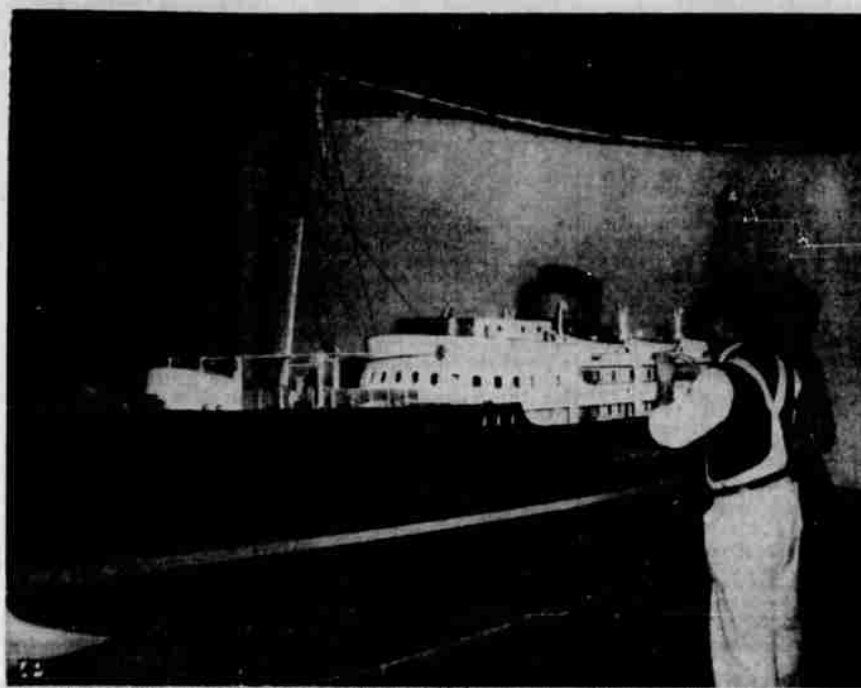
Actor Eugene Pallette Sells Ranch In Oregon

LA GRANDE, Ore.—(AP)—Eugene Pallette, veteran character actor, was selling his Wallowa mountain retreat today and preparing to return to Hollywood. Friends here said the film actor, who retired to the eastern Oregon wilderness along the Imnaha river five years ago, hopes to resume screen activity. They said he told them he had recovered from a throat ailment which forced his retirement.

Pallette's legendary warehouse, which he had stocked with all kinds of provisions to last for years, was being sold. One La Grande merchant bought five tons of sugar, rare spices, and imported delicacies.

Also sold from Pallette's 10-mile long ranch were 300 head of cattle, lumber, a sawmill.

A moving company was arranging shipment of his household furniture to Hollywood.



DANES TELL OF SHIPBUILDING—Workmen finish a model of the Kronprins Olav, latest Danish-built Diesel-powered passenger liner, named for Denmark's Crown Prince, on display in a Copenhagen exhibition of Danish shipbuilding from the Vikings to the present.

Army Engineers And Reclamation Said Overlapping

SEATTLE—(AP)—A "tremendous overlapping and powerful competition" between the army engineers and the reclamation service was cited by a former director of the National Park service and member of the Hoover study commission.

Horace M. Albright, president of the U. S. Potash company and a member of the Hoover commission study group on reclamation, mining and natural resources, said that millions of dollars could be saved if recommended reorganization would be carried out.

"The two agencies, doing the same kind of work, are competing for funds," he said.

"We strongly recommended that the two agencies be combined. But there you run into difficulty. The army engineers, with only about 200 commissioned engineers concerned, have 30,000 civilians working for them. The reclamation service also is a powerful agency."

Albright said that neither agency wants to be stripped of its individual powers and funds. However, he asserted, they should be appraised in the National interest so that no duplication of energy and funds occurs.

Portland Gas And Coke Rates At Pre-War Level

SALEM—(AP)—A \$652,000 annual rate reduction by the Portland Gas and Coke company will put the company's rates back to the pre-war level. Public Utilities Commissioner George H. Flagg said.

The reduction is effective Sept. 23, and Flagg predicted further reductions will be made.

This reduction is the fourth made this year, and they total \$2,000,000. All reductions were made possible by the falling price of crude oil, which is used to make the gas.

WATER RATION OFF

LA GRANDE, Sept. 13 —(AP)—Water rationing for lawn and garden sprinkling was at an end here today after a six-week shortage.

Steamfitter Pickets Own Union In Protest

DALLAS, Sept. 13 —(AP)—A steamfitter who charged his own union with "unfair and discriminatory practices" against its members is picketing the unions' headquarters again today.

Ray Booker has said he will picket local headquarters of the AFL Plumbers and Steamfitters union each Monday until the union "stops its boycott of members who want to do a full day's work."

Booker charges the union "is interested in stretching out construction jobs as long as possible, and to do so instructs its members to work at a certain pace to insure that jobs last as long as possible."

Union officials have offered no comment.

Nassau in the Bahama Islands was the base for ships running the Union blockade in the U.S. Civil War.

Illegal Radio Operation Draws Prison Sentences

SEATTLE, Sept. 3—(AP)—Two former New York men, convicted last week of operating a non-licensed radio transmitter, were sentenced here today to serve seven months in a federal prison camp.

George LaClair, 35, of Fort Edward, N. Y., Ralph Casey, 33, of Glens Falls, N. Y., and a third man, Edward Pleska, 23, of Lacey, Wash., were convicted on six counts of operating the transmitter for the purpose of beating horse race bookmakers.

Pleska, a former Longacres jockey, was sentenced to five months in the prison camp.



You can't make a mistake when you bake a Cinch Cake

Easiest to make...finest flavor cake. Cinch Cake Mix comes fully prepared and contains all the quality ingredients delicious cakes require. You simply add water, mix and bake. The rich flavor and fine texture will bring you compliments galore.

ADD ONLY WATER



MILLIONS OF CAKES WITH NO MISTAKES

The World Moves

So Do We

Packing Crating Storage

See Us for Free Estimates Agent for Lyon Van Lines

Phone 927

Evenings 320-J-3

Roseburg Transfer & Storage



Custom Slaughtering and Curing

Have your animal slaughtered and cut by us. We cut and wrap each piece for your locker.

Pork Slaughtered Tuesday

Beef and Veal Monday, Tuesday and Wednesday. Limited to these days in accordance to the Brand Inspection laws.

Beef, veal and pork for your locker at wholesale prices.

ROSEBURG MEAT CO.

WHOLESALE AND RETAIL FROZEN FOOD LOCKERS

624 Winchester

Phone 280

Harvest FOOD Festival

Come attend our big Harvest Food Festival! Reap bigger savings on Fall food needs! Red & White Food Stores have a harvest of food bargains for you during this sale! Come now and make your selections and save!

Don't Forget Your Home Owned Red & White Store Has A Complete Line Of School Needs		SPECIALS FOR FRIDAY and SATURDAY SEPTEMBER 16 AND 17	
RED & WHITE Peas & Carrots No. 304 Can 1 for 35¢	N.B.C. Shredded Wheat 2 for 33¢		
RED & WHITE Sauer Kraut No. 2 1/2 Can 1 for 25¢	RED & WHITE Pumpkin No. 2 1/2 Can 1 for 10¢		
BEG MORE Dog Food No. 1 Can 1 for 27¢			
RED & WHITE 3 Sieve Peas 10 1/2 Oz. Can 1 for 25¢	RED & WHITE WHOLE KERNEL Corn No. 2 Can 1 for 35¢		
RED & WHITE PEANUT BUTTER 1 Lb. 39¢ 2 Lb. 75¢	RED & WHITE COFFEE 1 Lb. 53¢ 2 Lb. 1.05		
OUR VALUE CREAM CORN No. 303 Can 1 for 29¢	OUR VALUE PEAS No. 2 Can 1 for 35¢		
RED & WHITE Tomato Juice No. 2 Can 1 for 25¢	RED & WHITE Tomato Juice 48 Oz. Can 27¢		

RED & WHITE