

### Flegel Is Asked To Take Part In Dedication

Mayor Albert G. Flegel of Roseburg has been invited to participate Sunday, Sept. 18, in the dedication of the new clubhouse erected by the Cottage Grove Rod and Gun club. He will join mayors from Drain, Creswell, Eugene, Springfield and Oakridge in the ceremony. State Game Director Charles A. Lockwood will be the principal speaker.

The recreational project was undertaken by the Cottage Grove sportsmen about two and one-half years ago. The club in the spring of 1948 purchased a site consisting of 22 1/2 acres, located at Walker, 5 1/2 miles north of Cottage Grove on Highway 99.

With a membership approaching 400, the club immediately embarked upon an ambitious building program, which has resulted in a two-story, 25 by 88-foot frame building, with spacious porch across the front, looking out upon four traps with concrete runways and modern trap houses. The second floor of the building houses an indoor rifle range, while a 300-yard outdoor rifle range has been built for large caliber fire.

Donations of labor and material aided the club in successful completion of its project. The building supplies the club's needs for a meeting place, and also includes kitchen facilities. Picnic installations have been made on the grounds, where an outdoor flycasting pool also is planned.

The clubhouse and grounds, it is announced, will be available for organizational and civic uses, and also will be used in connection with the annual pageant, "The Parade of the Chieftains." The ceremonial Sunday, Sept. 18, will be preceded by trapshoot.

### Roseburg City Council Approves August Claims

The following claims against the city, incurred during August, were ordered paid by the city council at the regular semi-monthly meeting, Sept. 6:

American Elkhart Co.	104.15
American LaFrance Foamite corp.	33.05
California-Oregon Power Co.	202.53
California-Oregon Power Co.	47.80
Coca-Cola Bottling Co.	13.45
Coen Supply Co.	2.25
Columbia Equine Co.	13.45
F. C. Campbell Co.	3.25
Carstens Furniture Co.	25.40
Cliff's Richfield Station	3.44
Denn-Gerrelsen Co.	2.44
Douglas County Farm Bureau	24.85
Douglas Abstract Co. Inc.	6.90
Jack Farris & Son	8.80
Fredrickson Photo Lab	21.25
Sig. Pitt	1.24
Fullerton Beverage Co.	212.74
Kennel, L. Bikesson Co.	253.70
Hansard Motor Co.	15.00
W. F. Farris	18.51
Haven's Service	30.05
Howard Cooper Corp.	7.40
Joe's Harley-Davidson	131.70
Industrial Electric Service Co.	13.20
Inertol Co. Inc.	7.70
J. V. Sporting Goods	92.75
Kier Crooch Plumbing Co.	2.48
Landis Iron Works	3.50
Leniz Typewriter Co.	11.24
Lockwood Motors	25.00
Modern Furniture Co.	787.28
Modern Suits Park-O-Meter Co.	142.00
Mine Supply Appliance Co.	271.00
New Laundry	65.87
Nelson Huser Co.	41.53
Neilson & Pyle Woodworking Co.	11.00
Oregon Chemical Pacific Co.	37.29
Oregon-Calif.-Nevada Fast Frt. Inc.	56.89
Orchard Auto Parts Co.	14.06
Palmdale Office Supply	12.75
Pacific Tel. and Tel. Co.	75.60
Pre-Mix Concrete, Inc.	100.50
Portland Paint & Lacquer Prod. Co.	187.50
Penney Co.	102.21
M. I. J. Pugh	4.20
Pennsylvania Salt	12.75
Pierce & Wagon Freight Lines, Inc.	47.10
Railway Express Agency	2.94
Rasall Drug Co.	11.82
Roseburg Laying Co.	2,386.00
Roseburg Cafe	223.70
Roseburg News Review	18.10
Roseburg Sand & Gravel Co.	26.23
Roseburg Garage Disposal	3.00
Roseburg Electric	63.78
Roseburg Glass Co.	3.69
Roseburg Book Store	9.15
Roseburg Color Center	8.25
Roseburg Printing Co.	27.23
Specialized Parts Equipment	12.52
Stansal Electric & Bituminous Co.	119.79
Troubridge Appliance	7,032.74
United Petroleum Corp.	294.01
Union Oil Co. of Calif.	47.10
Union Garage	4.80
Umpqua Valley Hardware	19.82
Vest Waters Supply Co. Inc.	683.18
Western Auto Supply Co.	2.80
R. L. Whipple	20.00
Walters Radiator Shop	4.00
Western Union	7.87
Wolbert Welding & Machine Works	7.92
Ben. B. Irving	11.10
J. M. Bartley	153.99

### Gale Page, Singer To Appear Here On September 17

Gale Page, singing star of concert, motion pictures, radio and television, will appear at Junior high school auditorium Saturday, Sept. 17, at 8:15 p.m. in a popular concert with Count Aldo Solito de Solis, internationally famous concert pianist and composer.

The pianist, sponsored locally by the Roseburg Junior Chamber of Commerce, will present a program of Gershwin, Chopin, Kern, Debussy, Porter and original compositions by Solito de Solis.

According to Jaycee Duane Baker, concert chairman, the count and Miss Page have a "rare talent and ability to present outstanding musical entertainment, and at the same time enjoy working together."

Baker added that Miss Page and De Solis attribute their continued success to their love of music and many other fields of endeavor. It is the fact that they love their work and are anxious to please.

Tickets, sealed at \$2.40 for reserved seats, \$1.80 for general admission, and 75 cents for students, are available at Lawson's and Roy's.

ing during the morning hours. A registered 16-yard shoot, as well as handicap events, has been arranged.

The afternoon program will be conducted by Warren Edwards, mayor of Cottage Grove.

DECEMBER  
NOVEMBER  
OCTOBER  
SEPTEMBER

## Winter's Months Away, It's True... Be smart - Get Set Ahead of Time!

# BUY NOW ON LAY-AWAY

Shop Penney's for your outdoor clothing, now at the beginning of the Fall season! Check our windows, come in and browse around, try on the many new styles and patterns, compare the quality. You'll agree that it's thrifty to shop at Penney's. Buy your outdoor clothing on Penney's convenient lay-away plan.

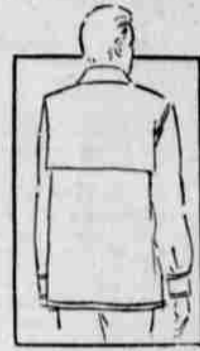


**BOYS' ALL-WOOL CHOPPER JACKETS**

100% all-wool chopper jackets in new Fall plaids. Double back for extra warmth and protection. Zipper closing front. Sizes 8 to 18. **6.90**

**Boys' Duck SPORT PARKAS**  
**5.90**

Double back heavy duck parkas with hood attached that fits down inside out of sight for the sunny days or comes up over the head for wet and stormy days. Sporty game pocket in back. Bright red and wine. Sizes 8 to 16.



**Boys' Satin Twill SPORT JACKETS**  
**4.98**

Closely woven satin twill jackets that can be worn for sport or dress. Zipper front, belted back, zipper cuffs, and two front pockets. Bright red and tan. Sizes 8 to 16.



**8.90**

Men's 36-44



- New Lower Slash Pockets
- Sturdy Zipper Front Closure
- Yoke Across Chest and Back
- Affords Extra Protection

Swing that ax! It's easy in Penney's chopper jackets. They're roomy. Give you freedom of movement yet provide plenty of warmth. (An extra cape of 100% wool plaid across your chest, and back does the trick.) Red, brown and green plaids.



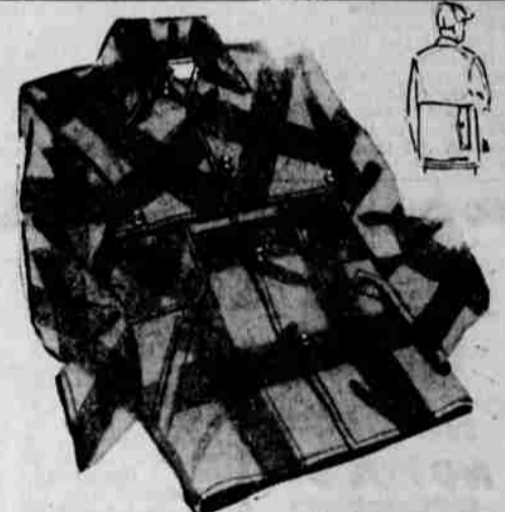
**BOYS' HOODED WOOL CRUISERS**

Lots of protection from colder days ahead. All-wool double back cruiser with matching hood attached. Zipper front closing. Sizes 4 to 10. **7.90**



**100% WOOL MEN'S CHOPPER JACKETS**

Heavy weight all-wool choppers with an extra wool cape for added protection. Two front pockets, button ahead. Just the jacket for cold, wet days ahead. Blue and red plaids. Sizes 36 to 44. **9.90**



**HEAVY WEIGHT WOOL CRUISER**

For lots of protection against the winter days ahead, this is the most popular one of them all. Heavy wool cape and double back that gives you double protection. Game pockets in back and two front pockets. Blue and red plaids. Sizes 36 to 44. **14.75**



**WATER REPELLENT DUCK CRUISER JACKETS**

**6.90**

Heavy duck jackets that have been so popular with the man that works out in the rain. Double back and sleeves for added protection. Two game pockets. Treated to repel water. Snap front. Sizes 36 - 46.

**WATER REPELLENT DUCK PANTS**

**5.90**

Heavy duck water repellent pants that are double thickness to below the knees. These pants are built for lots of wear. Treated to make them water repellent. Sizes 30 to 42.



**ALL-WOOL WHIPCORD CRUISERS**

100% all-wool whipcords that can be worn for work or sport wear. Double back and two game pockets. Four pockets in front with snap-down flaps, snap-cuff sleeves. Forest green color. Sizes 36 to 44. **18.75**

**J. N. BOOR**  
**OUTBOARD MOTORS**  
1 Gdn. Vally. Rd. Pl. 36 1-1  
**JOHNSON Sea Horse**  
Dealer  
• Boats • Boat Trailer •  
• Marine Equipment

**The World Moves**  
So Do We  
Packing Crating  
Storage  
See Us for Free Estimates  
Agent for Lyon Van Lines

**Phone 927**  
Evenings 320-J-3

**Roseburg Transfer & Storage**

### Western Stores BACK TO SCHOOL ON A NEW Hiawatha



**THIRTY PAYMENT PLAN**  
These bikes are available for  
Only 1.25 Per Week Payable Monthly

#### A NEW THRILL IN CYCLING PERFECTION!

- Rugged Tubular Steel Frames
- Famous CREST Balloon Tires
- World Famous Coaster Brakes
- Beautiful Baked Enamel Finish

**ST. CROIX MODEL**  
From streamlined head-right to handy center kick's a heart thumper... (ILLUSTRATED) **53.95**

**SENECA**, A rugged standard bike with plenty of flash and zip... A real bike beauty... **43.95**

**FAMOUS CRESTS TIRES AND TUBES**  
Just like the ones Dad has on his car. Extra heavy tread—positive traction. Crest Deluxe Tires and Tubes. 26x2.125  
Tires Reg. 1.95  
Tubes Reg. 1.69  
Tubes 88c

**Western Stores**  
WESTERN AUTO SUPPLY CO.

Stephens and Cass Sts. Phone 97



# AT PENNEY'S

Store Hours  
9:30 to 5:30

**LAY-AWAY MEANS C&C THRIFT PLUS ADDED CONVENIENCE!**