

**Alaska Find Supports Theory Anent U. S. Indian**

FAIRBANKS, Alaska, Aug. 26.—(AP)—Discovery of stone tools in an earth layer pre-dating any known Eskimo culture was reported here by Prof. J. L. Giddings Jr., University of Alaska anthropologist.

Giddings would hazard no estimate of the age of his discovery, but said it bolstered the theory that the American Indian came to this continent by way of the Bering sea region.

The professor disclosed the discovery to Dr. Terris Moore, university president, upon his return from this season's excavations in the Cape Denigh area on North Sound along the Bering Strait.

"Some of the stone tools found," Professor Giddings said, "are in forms of finished blades or points of unique workmanship with more than 20 flaking scars to the inch."

"A number of flake knives of a type hitherto unknown in America, but common in early European and Asiatic sites, were also discovered."

The layer containing the prehistoric tools was covered with two more Eskimo culture phases, Giddings said, but separated from them by a layer of clay.

**Power Rates To Rise About 1954, Raver Predicts**

SPOKANE, Aug. 26.—(AP)—An increase in wholesale electric power rates was predicted Thursday for about 1954 by Dr. Paul J. Raver, Bonneville power administrator.

Raver made the prediction in answer to a question at a public power conference sponsored by the Washington Public Utility Commissioners' association.

He said the BPA will have earned \$60,000,000 over expenses by 1954 but in that year revenues probably will start falling under expenses. The agency's surplus goes into the federal treasury as earned.

Raver said he hoped there would be no need for a "voluntary brownout" in the Pacific Northwest next winter.

Grand Coulee dam will have

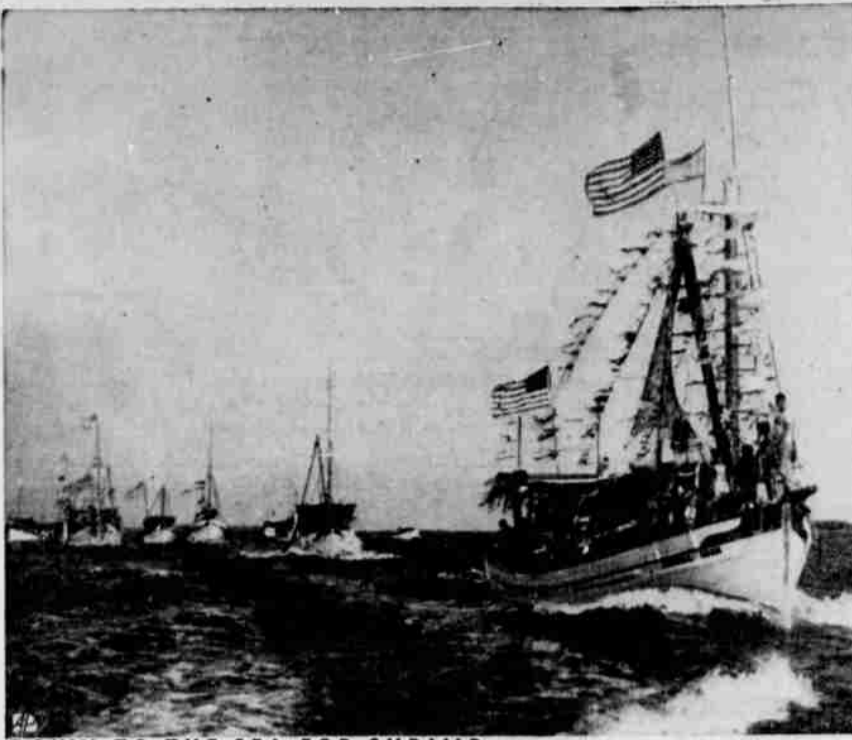
**Senators May Probe Union's Power in Hawaii**

WASHINGTON, Aug. 26.—(AP)—Senator Robertson (D-Va.) said Thursday the Senate Banking committee is considering sending a subcommittee to Hawaii to investigate the economic power of the CIO Longshoremen's union.

The union has been on strike for 118 days, paralyzing island shipping.

Robertson said the inquiry would be part of the banking committee's broad investigation into monopoly charges against labor organizations.

Small business men in Hawaii have asked him, Robertson said, to send a subcommittee to look into the union's "ability to completely close down Hawaii's economy."



**DOWN TO THE SEA FOR SHRIMP**—Dressed in flags and bunting the Biloxi, Miss., fleet passes in review on its way into the Gulf of Mexico to start the shrimping season.

**I'm glad I bought Bohemian**

**Bohemian Club**  
Export Lager Beer

Western Distributing Co., Phone 1294-L

**Do The Job YOURSELF with The NEW**

**DISSTON One-Man CHAIN SAW**

Save your muscles. Head for the woods with this new Disston One-Man Chain Saw. Light weight, gas-line-driven power saw. Fella... Bucks... Limbs. Operates at any angle... even upside down.

**CARL J. PEETZ**  
920 S. Stephens  
Phone 279

**Beautify Your Grounds**

The beauty of your grounds enhances the beauty of your home. Arrange now to have our skilled gardeners do your landscape job. Free estimates.

**L. H. McPherson**  
Rt. 2, Box 153 Phone 715-J-1

If Benjamin Franklin had had his way, the turkey instead of the eagle would have been made the American national emblem.

**Police Find Purse Of Missing Wealthy Widow**

LOS ANGELES, Aug. 26.—(AP)—Police yesterday found a purse belonging to Mrs. Mimi Boomhower, the first break in the baffling disappearance of the 48-year-old wealthy widow.

Capt. Emmett Jones said the purse was found in a telephone booth in a Beverly Hills supermarket. It contained no money or jewelry but did hold her cards, keys, compact and other items.

The widow, who lived alone in a \$50,000 Bel-Air home, disappeared Thursday without a trace.

**Quake-Damaged Courthouse May Have To Be Razed**

TACOMA, Aug. 26.—(AP)—Structural defects and damage from the April earthquake may force Pierce county to dismantle its 60-year-old courthouse.

Pierce county commissioners said Thursday that new discoveries of crumbling had been made on the fifth floor adjacent to one of the elevator shafts.

Previous inspections had resulted in a decision to tear down the building's tower, a landmark visible for miles from Tacoma. The quake dislodged building stone and bricks in the tower making it unsafe and beyond repair, according to engineers.

The new weaknesses disclosed Thursday probably are related to the quake, building superintendent Roy Harrison said. He now entertains grave doubts as to the stability of the building, particularly if another quake should hit this region.

"If the earthquake that shook Seattle Sunday night had occurred here, we would be having a mass funeral for the persons in the building at that time," Harrison said. The Pierce county jail and sheriff's office are in the building.

Almost as great a problem as tearing down the building will be the financing of a new one, commission chairman L. A. Hudson said. The county has no spare cash, no building fund reserve, he said, and was worried about paying for dismantling of the tower, a \$30,000 job.

Emergency repairs are being made on the building to permit continued use of the structure by county offices which have no other place to go.

**NEW LOCATION!**  
Dr. H. B. Scofield  
Palmer Chiropractor  
Rifle Range Road  
4 1/2 mi. North of  
County Shops  
Office Hours 10-12 and 2-4  
Saturdays 10-12 A. M.  
X-ray, neuro-calometer service  
for spinal correction.



*"Thanks...but only a Chevrolet will satisfy me... I know it gives more for my money!"*

- LONGEST, HEAVIEST CAR IN ITS FIELD with WIDEST TREAD**  
the big car in the low-price field, giving more riding-comfort, more road-steadiness and more safety.
- EXTRA ECONOMICAL TO OWN—OPERATE—MAINTAIN**  
and bringing you more money when you trade; for Chevrolet is America's most wanted motor car—new or used!
- CENTER-POINT STEERING**  
with control centered between the front wheels for maximum driving-ease with minimum driver fatigue.
- FISHER UNISTEEL BODY CONSTRUCTION**  
with steel welded to steel above, below and all around you for the highest degree of solidity, quietness and safety.
- WORLD'S CHAMPION VALVE-IN-HEAD ENGINE**  
the extra-efficient power plant with the valve-in-head design that's setting the trend for the automotive industry.
- CERTI-SAFE HYDRAULIC BRAKES**  
more outstanding than ever before with new *Dual-Life* Rivetless brake linings that last up to twice as long.
- 5-INCH WIDE-BASE WHEELS PLUS LOW-PRESSURE TIRES**  
the widest rims in the low-price field—plus extra low-pressure tires—for greater stability and riding-comfort.
- CURVED WINDSHIELD with PANORAMIC VISIBILITY**  
supplying all that extra vision which means extra safety in driving with a fuller, freer view all about you.
- FISHER BODY STYLING AND LUXURY**  
with smooth, graceful curves, new interior richness and such extra luxuries as Push-Button Door Handles.

**... AND IT'S THE LOWEST PRICED LINE IN ITS FIELD!**

**THE MOST BEAUTIFUL BUY OF ALL!**



**HANSEN MOTOR CO.**  
Oak & Stephens Phone 446

**PRUDENTIAL LIFE Insurance**  
HORACE C. BERG  
Special Agent  
111 West Oak  
Office 712-J Res. 871-J

**OIL TO BURN**  
For prompt courteous metered deliveries of high quality stove and burner oil  
CALL 152  
**MYERS OIL CO.**  
Distributors of Hancock Petroleum Products For Douglas County

**IF...**  
It's a Home Appliance You Need  
**SHOP BERGH'S FIRST!**  
Ironite Hamiten  
Norge Maytag  
Phone 805  
**Bergh's**  
Appliance Service  
1200 S. Stephens  
See NORGE Before You Buy

**School MUSICIANS**

Convenient terms, Liberal trade-ins  
★ **CONN**  
★ **BUESCHER**  
★ **OLDS**  
Band Instruments Exclusively Yours At  
**Bob's**  
MUSIC SHOP  
Everything in Music  
305 N. Jackson Phone 908

**Oh-Oh! My roamin' days are over!**

**RED BRAND FENCE**

If you have a cow or two that want to cover too much territory, just put a good tight stretch of Red Brand fence between them and freedom. The uniform tension crimps keep RED BRAND tight in hot or cold weather year after year. The firm knots don't slip—stock can't spread the wires apart. You save money with Red Brand, too, because it lasts longer, as proved in actual weather tests. For the best buy in fence, see us.

- Exclusive "Galvannealed" zinc coating
- Special copper-bearing steel wire
- All-weather tension crimps
- Tight knots that won't slip

**BUY WHERE YOU SHARE IN THE SAVINGS**  
DOUGLAS COUNTY  
**Farm Bureau Co-Operative Exchange**  
ROSEBURG, OREGON  
Phone 98  
Located—W. Washington St. and S. P. R. Tracks