

Secret Clause Could Wreck All Good Work In Marshall Plan

By BRUCE BLOSSAT

The \$3,778,000,000 Marshall Plan fund approved by the Senate Appropriations committee should bear the title, "U. S. Farm Relief Bill."

It deserves this label because of a secret proviso earmarking an estimated \$1,500,000,000 exclusive for purchase of American surplus farm products to be dumped in European countries.

Reporters unearthed the clause after the committee avoided any mention of it in announcing its recommendations.

How did the earmarking feature get into the bill? During committee hearings on Economic Cooperation Administration funds, Senator Wherry of Nebraska, Republican floor leader, asked Paul Hoffman, head of ECA, to furnish estimates of the surplus farm commodities each ECA nation would need in the current year.

It was a hostile challenge, for the Nebraskan didn't think it would be met. Reporters said Wherry appeared surprised when Hoffman produced the figures some time later.

They gained the impression that many senators promptly lost interest in cutting ECA funds sharply after they learned how much of their home area farm production would likely go into the program.

But ECA never intended to stick rigidly to the estimates, either for particular commodities or particular countries. They were simply offered as a rough guide to committee action.

The effect of the secret clause is now to freeze these estimates into rigid legal requirements. It would mean ECA must buy surplus farm products in the estimated amounts or not use the money at all.

In other words, it could not be transferred for other useful purchases.

Britain, for example, would get \$200,000,000 worth of cotton under the estimates. Optimistic forecasts of textile exports lay behind the figures.

MARKETS

PRODUCE
PORTLAND, July 18. — (P) — Butterfat — (Tentative, subject to immediate change): Premium quality maximum to 35 to 1 per cent acidity delivered in Portland, 61-64c lb.; first quality, 59-62c lb.; second quality, 55-58c. Valley routes and country points 2c less than first.

Butter — Wholesale f.o.b. bulk cubes to wholesalers: Grade AA, 93 score, 61c lb.; A, 92 score, 60c lb.; B, 90 score, 57c lb.; C, 89 score, 55c lb. Above prices are strictly nominal.

Cheese — (Selling price to Port-

les, 38i-48ic; Oregon 5-lb. loaf, 41i-50ic.
Eggs — (To wholesalers): A grade large, 61i-62ic; A grade, medium, 54i-57ic; B grade, large, 50i-53ic.

Live Chickens — (No. 1 quality, f.o.b. plants): Broilers, under 2 1/2 lbs., 27-28c; fryers, 2 1/3 lbs., 31-33c; 3 1/4 lbs., 33c; roasters, 4 lbs. and over, 33c; fowl, leghorns, 4 lbs. and under, 21-23c; leghorns, over 4 lbs., 23c; colored fowl, all weights, 25c; old roosters, all weights, 18-19c lb.

Rabbits — (Average to growers): Live white, 4-5 lbs., 19-21c; 5-6 lbs., 17-19c; colored, 2 cents lower; old or heavy does and bucks, \$14c lb.; dressed fryers, 55-57c lb.

Fresh Dressed Meats (Wholesalers to retailers per cwt.): Beef: Steers, good, 500-800 lbs., \$42-45; commercial, \$40-41; utility, \$33-36.

Cows: Commercial, \$35-37; utility, \$31-33; canners-cutters, \$26-28.
Beef Cuts — (Good steers): hind quarters, \$53-55; rounds, \$53-55; full loins, trimmed, \$65-70; triangles, \$36-37; square chucks, \$38-40; ribs, \$50-53; forequarters, \$36-37.

Veal and Calf: Good, \$40-42; commercial, \$34-37; utility, \$28-30.
Lamb: Good-choice, spring lambs, \$44-46; commercial, \$40-42.

Mutton: Good, 70 lbs., down, \$18-20.
Pork Cuts: Loin, No. 1, 8-12 lbs., \$61-63; shoulders, 16 lbs., down, \$41-43; spare ribs, \$48-51; carcasses, \$35-36; mixed weights, \$3 lower.

Wool — Coarse valley and medium grades, 45c lb.
Mohair — Nominally 25c lb. on 12-month growth.

COUNTRY-KILLED MEATS
Veal — Top quality, 32-34c lb.; other grades according to weight and quality with poor or heavier, 28-32c.

Hogs — Light blockers, 31-32c lb.; sows, 24-26c.
Lamb — Top quality, 40-43c lb.; mutton, 8-14c.

Beef — Good cows, 26-30c lb.; canners-cutters, 22-25c.
Onions — Market dull; yellow globe jumbos, new crop, Calif. med., and large, \$2.00-2.25; reds, \$2.25-2.45; white globes, \$3.50-4.00.

Potatoes — Ore. Boardman district whiterose No. 1, \$3.00-3.25; No. 2, \$1.00-1.10 per 50 lbs.; new potatoes: Calif. long whites, size A, \$3.60-3.75; size B, 100 lbs., \$2.50-2.75.

Hay — New crop windrow bales, U. S. No. 1 green alfalfa or better, truck lots f.o.b. Portland, \$29-30; U. S. No. 1 mixed timothy, \$33-34; new crop oats and vetch mixed hay, unclassified clover hay, \$17-21, depending on quality, baled, on Willamette valley farms.

LIVESTOCK
PORTLAND, July 21. — (P) — (US CATTLE: Market very slow export and wholesale): Oregon sin-

SACRIFICE! Must Sell This Week

Two twin bungalows—each a 6-room all-modern home with connecting driveway and double garage. Located in downtown area, exceptionally valuable property. These twin homes are excellent for rentals... have lawns and shrubbery—lot size 90'x300'. Furnace heat, hardwood floors. Homes are free and clear, we desire a cash purchase, \$10,500 will buy all... an opportunity for you to make an investment that will provide you with a lifetime income. Phone 624-J for more details or inspect property at 165 E. 2nd Ave. South.

Air Force Draws Four Douglas County Youths

Four young high school graduates, all living in Douglas county, were enlisted into the U.S. air force Tuesday at the Eugene examining station, it was reported by M/Sgt. John F. Rose, Roseburg army and air force recruiter.

The young men enlisting were Lacy C. Hinther, 18, son of Mrs. Alma L. Hinther, route 1, box 316, Roseburg; Glenn E. Tigner, 18, son of Mr. and Mrs. Ezra W. Tigner, route 1, box 289, Roseburg; Richard M. Gibson, 18, son of Mr. and Mrs. Clifton C. Murrell, Canyonville, and Donald R. Hall, 18, son of L. G. Hall, Milo.

Although each one of the boys desired different types of vocational training, Sgt. Rose said, after interviewing them at the Roseburg recruiting office, they all chose the air force because of its wide scope of occupational specialties.

cept canner-cutter cows active, strong; otherwise market mostly steady to weak with some clean-up sales unevenly lower and some grass beef cattle without bids; few cutter-common steers \$13.00-19.00; low medium 1100 lb. weights \$21.00; no good steers available; few cutter-common heifers \$13.00-16.00; canner-cutter cows mostly \$11.00-12.50; common medium beef cows \$13.00-14.50; odd heavy grass beef cows down to \$12.00; bulls scarce; vealers weak; medium-good grades \$15.00-20.00; large lot good-choice 278 lb. range vealers \$21.50; common down to \$11.00 or below.

HOGS: Market slow; good-choice 180-230 lb. butchers \$24.00; scattering good 125-160 lbs. \$21.50; odd choice 250 and 170 lb. butchers \$22.00; few good 370-400 lbs. sows unevenly lower at \$15.50-16.50; heavier sows bid down to \$15.00 and below; good-choice feeder pigs scarce, quotable \$23.50-25.00.

SHEEP: Scattered early sales slaughter lambs around \$1.00 lower; bulk supply unsold; few good-choice spring lambs \$20.00-20.50; holding good ewe and weaner feeder lambs around \$18.00; common yearlings \$15.00; good light ewes steady at \$6.50-7.00.

Some natives of Borneo prefer to eat eggs that are nearly ready to hatch.

● House, Commercial and Industrial Wiring
● Electrical Trouble Shooting
● Motor and Appliance Repair
● Free Pick-Up and Delivery Service
17 Years Experience
ACE ELECTRIC
Licensed Electrician
316 E. 2nd Ave. N. Ph. 1095-L

Public Rally To Oppose Elliott's Recall Planned

PORTLAND, July 22. — (P) — A public rally in support of Sheriff Mike Elliott has been called for Sunday.

Recall petitions are being circulated against Elliott. Leaflets distributed yesterday called the meeting for Sunday afternoon in a public park. They said the sponsor was the legal defense movement, an organization known also as the Citizens' Action committee.

County Democratic central committee Chairman Nicholas Granet, who last week said he was Elliott's spokesman in all matters connected with the recall, said he had no knowledge of the rally.

The leaflets urged opposition to "invisible government" that had already put a Democratic county treasurer out of office after his election last November. They said the same forces were working to oust the young Democratic sheriff.

"For the love of Mike, come and bring your friends," the announcement said. Meanwhile, recall committee chairman T. L. Gatch, retired vice admiral, said about 2,200 signatures on recall election petitions had been sent to county election officials for verification.

Some natives of Borneo prefer to eat eggs that are nearly ready to hatch.

● House, Commercial and Industrial Wiring
● Electrical Trouble Shooting
● Motor and Appliance Repair
● Free Pick-Up and Delivery Service
17 Years Experience
ACE ELECTRIC
Licensed Electrician
316 E. 2nd Ave. N. Ph. 1095-L

Hawaiian Blames Congressmen For Dock Strike

PORTLAND, July 22. — (P) — Hawaii's woman territorial senator said yesterday a congressional minority is chiefly responsible for the islands' strike-bound plight.

"If we were a state and had representation in Congress, this never could have gone so far," Thelma M. Akana, Republican senator, told an interviewer while here on a business trip.

Most people in Hawaii don't know whether the CIO longshoremen or the employers are right in the contract dispute which has halted ship unloading for nearly three months, she said.

Mrs. Akana said she is "ashamed to be in the same party with Sen. Hugh Butler" (R-Neb) asserting that he blocked statehood for Hawaii in the 80th Congress. She added that Rep. Sabath (D-III) pigeonholed the statehood bill in House committee this session and "it's an indictment of our form of government when a handful of people can stymie the rights of a half million."

Mrs. Akana said that whatever the merits of the labor dispute, the majority of the longshoremen are "loyal Americans," seeking better wages, security and work-

ing conditions. Extension to the shipping industry of a law similar to the national railway labor act could prevent costly tie-ups, she said.

The first steel rail was rolled of American steel in 1885.

New Woman Treasurer Keeper Of Record Sum

WASHINGTON, July 22. — (P) — Mrs. Georgia Neese Clark, the first woman treasurer of the United States, Thursday became keeper of probably the biggest sum ever in the custody of any woman—\$27,424,541.375.78 2-3.

Mrs. Clark, president of a Richmond, Kans., bank with \$500,000 in deposits until she took oath as U. S. Treasurer one month ago, acknowledged her responsibility by signing a receipt. Six accountants certified the amount was correct to the "two thirds of a cent." The two-thirds cent was in bonds and other securities held in trust.

Mrs. Clark's custodial holdings exceed the \$26,596,701.648.01 peak debt of the U.S. during World War One and is little more than a tenth of the current debt total of \$252,886,225,050.14.

The first steel rail was rolled of American steel in 1885.

Foreclosure On Sawmill Plant Sought In Suit

E. K. Wood Lumber Co. has filed suit in circuit court against the H. A. New Lumber Co. to foreclose on the latter's sawmill holdings a mile and a half south of Dillard. The property allegedly was given as security for \$80,000 which the defendant agreed to pay the plaintiff, according to the complaint.

The plaintiff states that no part of the principal has been paid except \$7,583.49. Judgment is asked for \$72,416.51, plus interest and \$3,000 attorney fees; also, that the mortgage be foreclosed

and the property sold to satisfy the mortgage.
Named also as defendants are the state of Oregon, by and through its State Unemployment which allegedly holds a lien of \$506.31; the U.S. Government, reported to hold a lien of \$394.75, plus penalties, and A. A. St. Onge, the claim of whom is unknown to the plaintiff, states the complaint.

J. N. BOOR
924 Gdn. Vally. Rd. Ph. 530-J-1
JOHNSON
Sea Horse Dealer
● Boats ● Boat Trailers
● Marine Equipment

Bohemian—of course!

Bohemian Club
Export Lager Beer
Distributed By Western Distributing Co., Phone 1294-L

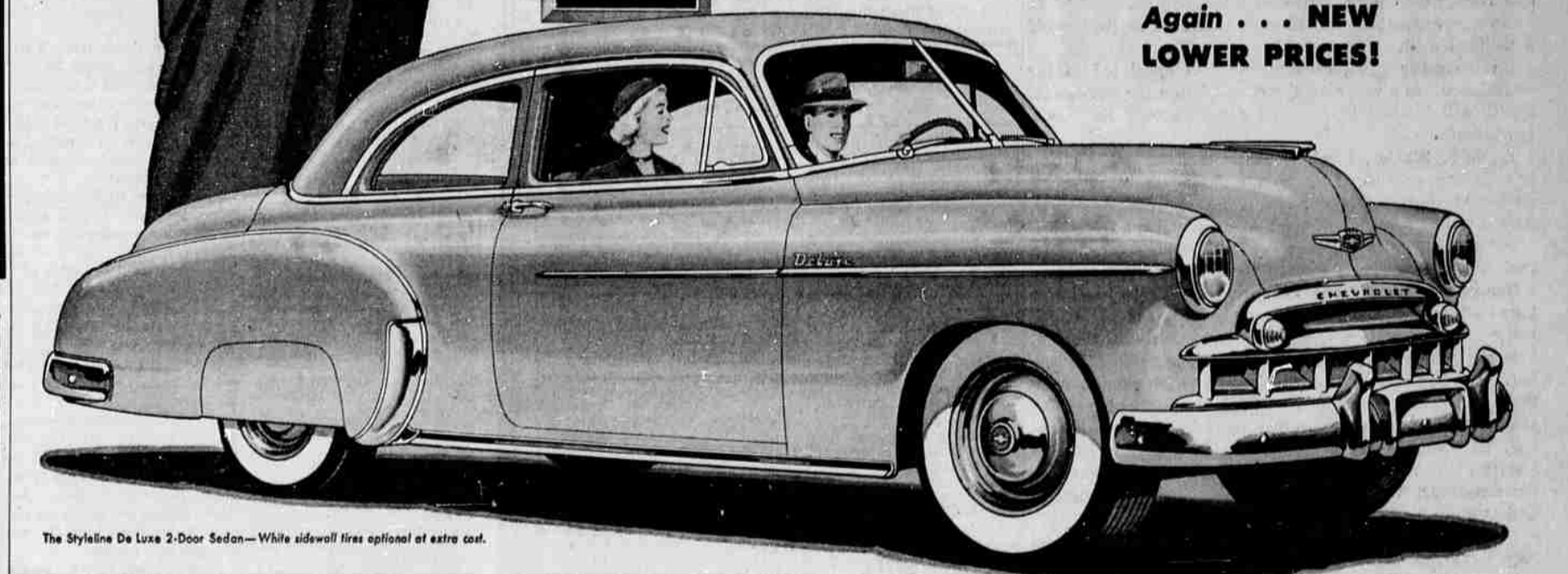


"Why accept anything less than the most Beautiful BUY of all?"

Stand by for a Chevrolet and get the most for your money

It's your money you're spending, and you're entitled to get the most motor car, in return. All America says that means Chevrolet—the most beautiful buy of all—and the car that gives EXTRA VALUES in every phase and feature of motoring. It brings you fine-car advantage after fine-car advantage, from Fisher Body Styling and Valve-in-Head performance to Center-Point steering ease and the greater riding-comfort of the longest, heaviest car in its field. And offers these advantages at the lowest prices! So why accept anything less than the most beautiful buy of all? ... Invest in a Chevrolet and get the most for your money!

Again . . . NEW LOWER PRICES!



Insist on getting these EXTRA VALUES exclusive to Chevrolet in its field!

- WORLD'S CHAMPION VALVE-IN-HEAD ENGINE** — the extra efficient power plant that's setting the trend for the industry.
- FISHER BODY STYLING AND LUXURY** — found elsewhere only on higher priced cars.
- CENTER-POINT STEERING** — giving maximum steering ease with minimum driver-fatigue or "car-wander" and found elsewhere only on costlier cars.
- CERTI-SAFE HYDRAULIC BRAKES** (with *Dubl-Life* Rivetless Brake Linings) — assuring swifter, safer stops for you and your family.
- FISHER UNISTEEL BODY CONSTRUCTION** — with steel welded to steel all around you for maximum solidity, quietness and safety.
- CURVED WINDSHIELD** — supplying that extra vision which means extra safety, exclusive to Chevrolet in its field.
- LONGEST, HEAVIEST CAR IN ITS FIELD**, with **WIDEST TREAD**, as well giving more room, more riding-comfort, more road-steadiness and safety.
- 5-INCH WIDE-BASE WHEELS** (with Extra Low-Pressure Tires) — the widest rims in the entire low-price field, providing greater ride-stability.
- EXTRA ECONOMICAL TO OWN—OPERATE—MAINTAIN** — and bringing you more when you trade; for Chevrolets are most wanted —new or used!

HANSEN MOTOR CO.

Oak & Stephens

Phone 446

IMPERIAL Washable WALLPAPERS
3 year Guarantee
Wise buyers look for the Imperial silver label that says the finest in wallpapers. Guaranteed to withstand room exposure without fading and to clean satisfactorily when instructions are followed.
Josse's HOME FURNISHINGS
PERSONALIZED SERVICE FOR THE HOME