

## Jersey Dairymen Kick At New Milk Price

PORTLAND, July 7. — (P) — to the price of grade A skimmed milk. R. E. Cavett asserted that the new milk price in this area has drawn complaints from Jersey breeders and buttermilk dealers.

The Jersey owners complained that the order is not fair to producers whose milk has a high butterfat content. The new order bases less of the price on butterfat content.

The buttermilk people objected

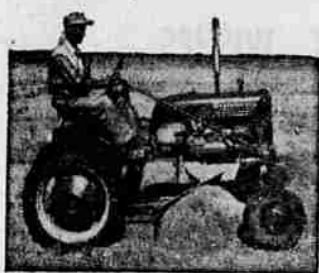
Senator William Blount of Tennessee was named in the first impeachment proceedings before the Senate— in 1798—and the charges were dismissed for want of jurisdiction.



**FARM SIZE EARTH MOVER**  
**FARMALL CUB LEVELING AND GRADING BLADE**

You mount this handy blade in front of your Farmall Cub—as shown above. In that position you backfill tile drains, push snow, move loose material.

For heavier grading and leveling, mount the blade beneath your Farmall Cub, as shown below. Attaches to the reversible drawbar... operates by hydraulic Farmall Touch Control.



We will be glad to show you how the Farmall Cub grading and leveling blade can be used on your farm.



**SIG FETT**

527 N. Jackson Phone 1150

## Crop-Increasing Fertilizers Toughen Government Task Of Planning Outputs Of Farms

By OVID A. MARTIN  
Associated Press Farm Reporter

WASHINGTON.—(P)—Threats of new farm surpluses, with prospects of a return to government production controls, raise this question:

Can government planning of farm output keep pace with science?

With foreign markets for many agricultural products falling off and with imports of some competitive products increasing, the Agriculture Department faces the problem of cutting domestic production of a number of commodities.

Yet day by day science is showing the farmer how to produce more and more on less and less land and with fewer hours of labor.

This tug-of-war is leading many farm leaders to debate the effectiveness of one of the major measures now authorized by law for holding down farm output.

That measure is the acreage allotment.

When the government decides there is need to reduce production of a crop, it sets up a system of acreage allotments. Under it, the Agriculture Department sets a production goal for the particular crop. Then it says that on the basis of past average yields per acre, it would take so many acres of land to produce the goal.

But the government has no assurance that the crop will be kept within the goal, even if every farmer stays with his allotment. It is possible for farmers to boost the yield above the past average by using more fertilizer, new and higher-yielding varieties of seed, and improved harvesting machinery.

A boost of two bushels an acre in the yield would, in this case, produce a surplus of about 133,000,000 bushels of wheat above the goal.

Forecasts Major Headache  
This inability to forecast yields per acre has been a major headache in government efforts to cope with costly potato surpluses of recent years. Last year, for example, the harvested acreage was the smallest in nearly seven decades. Yet the crop almost equaled a record set in 1943.

What happened? Farmers applied more fertilizers. They used the newest insecticides.

Big problems appear to be rising in connection with corn surpluses. Recent studies on use of fertilizers on this vital livestock feed crop show that vast increases are possible in yields per acre.

Last year, for example, 44 per cent more corn was produced on 23 per cent fewer acres than the average for the 1928-34 period. Farmers are quickly learning that they can increase yields — and returns — tremendously by applying fertilizer side-dressing to corn during the growing season.

As more and more farmers



**Talking**

**About a Home?**

So many people do nothing but talk about it! But if you really want to own your home, consult me now. Personal attention. Economical terms.

**RALPH L. RUSSELL**

Loans and Insurance  
Loan Representative  
Equitable Savings & Loan Assn.

112 W. Cass Phone 913

## Artificial Light Ups Production Of Turkey Hens

A method of picking best layers among turkey breeding hens with out expensive trapping is suggested by J. A. Harper, on the poultry staff of the O. S. C. experiment station, as the result of experiments with advanced artificial lighting of breeding hens.

Harper and J. E. Parker, head of the poultry department, found that response of turkey hens to artificial light is directly related to seasonal egg production. In other words, the first hens to start laying after light was applied, were the ones that produced the most during the season.

The research men also found that hens that responded slowly to the stimulus of artificial light showed greater tendency toward pauses and gaps in their production through the season, either from broodiness or other causes.

"In view of these findings, it appears practical to improve egg and poult production in turkeys through saving stock from individual hens showing most rapid response to light stimulation," Harper writes in an article recently published in Poultry Science.

"Date of sexual maturity may be determined without trapping by examination of the posterior end of the oviduct," he explained.

Reprints of Harper's entire report on the experiment may be had free by writing to the poultry department at the college.

## Mistake In Ad May Cost Malheur County \$10,000

ONTARIO, Ore., July 7. — (P) — John Bennett insists he wants his grazing land for 5 cents an acre.

He has filed suit in Circuit Court demanding that Malheur County give him a deed to some 23,000 acres for \$1,193.

The County advertised it at that price, but it was a mistake in the decimal point—should have been \$11,930 or 50 cents an acre.

When the County refused to give him a deed, he filed suit.

The word "Almanac" is derived from the ancient Arabian words which meant "the weather" or "climate."

per writes in an article recently published in Poultry Science.

"Date of sexual maturity may be determined without trapping by examination of the posterior end of the oviduct," he explained.

Reprints of Harper's entire report on the experiment may be had free by writing to the poultry department at the college.

**INSURANCE**  
LIFE AUTO FIRE  
State Farm Mutual Insurance  
O. L. ROSE  
P. O. Box 489 Phone 288  
115 W. Cass  
Over Douglas County Bank

## LET US HELP

Remodel or Complete Your Home  
Budget Plan If Desired

**COEN SUPPLY COMPANY**

Everything For The Builder

Flood & Mill Sts.

Phone 121

Tue., July 5, 1949—The News-Review, Roseburg, Ore. 9

## Today's Pump is Jet-Type

THE SOLID COMFORT OF  
UP-TO-THE-MINUTE  
"Jet Type" WATER SERVICE

**UNIVERSAL PUMPS** AND WATER SYSTEMS

FOR DEEP AND SHALLOW WELLS

Ideal For

- DOMESTIC WATER SERVICE
- IRRIGATION AND FARM USE
- INDUSTRIAL APPLICATIONS

SINGLE AND MULTI-STAGE DEEP AND SHALLOW WELL JET-TYPE PUMPS AND WATER SYSTEMS FOR EVERY KIND OF WATER PROBLEM

Easy Budget Terms

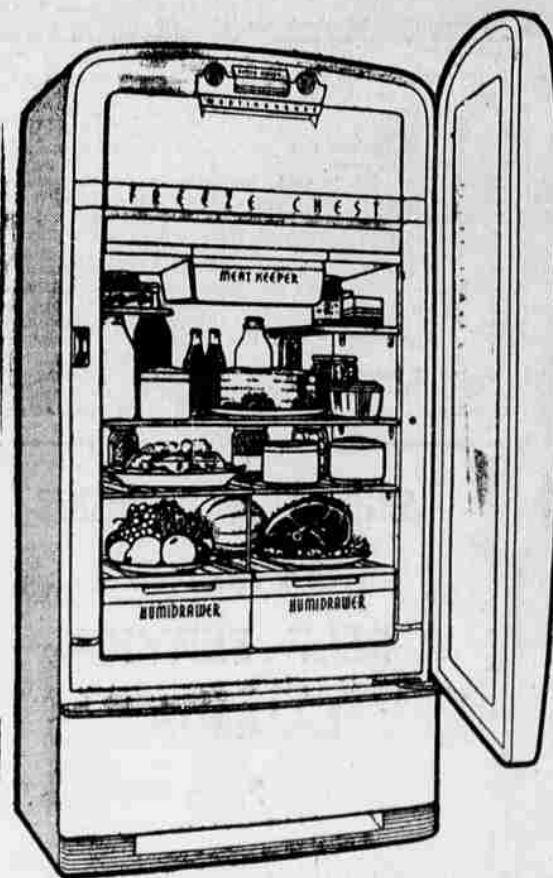
Distributed By

**W. M. SANDALL CO.**

Hiway 99 North

Phone 1117-R

## THE GREAT, NEW Westinghouse Aristocrat 10 Refrigerator-Freezer Combination



WITH **COLDER COLD**

made possible by New • Exclusive • Automatic **HOLD-COLD CONTROL**

a system that permits intense cold in the Freeze Chest; yet, at the same time, safe, steady cold for normal food-keeping. No "seasonal control" dials to turn—nothing to adjust, regardless of outside temperatures, humidity or climate. All-weather automatic!

- ★ COLDER COLD freezes foods—keeps them safely
- ★ COLDER COLD freezes ice cubes faster
- ★ COLDER COLD keeps ice cream firm

and, at the same time, you get

- ★ steady, safe cold for normal food-keeping
- ★ moist cold to keep vegetables fresh and crisp

Packed with all the great, new features you want!

- Giant Freeze Chest and Ice Cube Storage Tray freeze and store safely 56 pounds of food and ice—tray alone keeps 108 ice cubes.
- Two big Humidrawers keep ¾ bushel of vegetables crisp and fresh.
- Automatic Door Closer.

- New Meat Keeper holds 18 pounds of fresh meat safely for days.
- Drop-down and removable shelves for special storage needs.
- New Butter Keeper refrigerates butter automatically, yet keeps it always ready to spread.

You can be **SURE**... if it's Westinghouse

Act Now! Stop in and see these great, new Westinghouse Refrigerators today—at

**Trowbridge ELECTRIC CO.**  
136 N. JACKSON ST. TELEPHONE 268

*Montgomery Ward*

Roseburg, Oregon

**ANNOUNCING!**  
**NEW LOWER**  
**PAINT PRICES**

A lower cost of materials now enables Montgomery Ward to offer you new, lower prices for the same top-quality paint! The paint is not changed... only the prices. Montgomery Ward paint is still the best paint that money can buy!

SUPER HOUSE PAINT WAS 5.05 Now Reduced To **4.25** Gal. in 5's

COVERALL HOUSE PAINT WAS 3.79 Now Reduced To **3.29** Gal. in 5's

SUPER BARN PAINT WAS 3.10 Now Reduced To **2.69** Gal. in 5's

SUPER FLAT WALL PAINT WAS 3.59 Now Reduced To **3.29** Gal.

SUPER GLOSS ENAMEL WAS 1.42 Now Reduced To **1.39** Qt.

SUPER SEMI-GLOSS WAS 1.35 Now Reduced To **1.29** Qt.

CONVENIENT PARKING AT LOT IN REAR OF STORE