

Driverless Truck Goes On Rampage



Picture by Ada's Photo Studio
This driverless logging truck is pictured after it had traveled a block and a half down Oak Street and across the intersection of Second Street in Myrtle Creek, before it crashed into the metal building occupied by the Umpqua Machine Shop. The accident happened Friday at 5:45 p. m.
The truck, the property of Jim Heath of Myrtle Creek with Nick Heath as operator, was parked up hill from the scene. It narrowly missed several cars during its runaway trip.
Mrs. Louise Ketcherside, wife of an employee of the machine

Hot Words, Wisecrack Fly Between Supreme Court Justices In Routine Session

WASHINGTON, June 21—(AP)—Disagreeing Supreme Court justices resorted to hot words and even a wisecrack Monday in a vain effort to clear the tribunal's docket for this term.
Still another decision day was set for next Monday. The Court then hopes to adjourn until October 3.
Today's mass of opinions decided no momentous issues—although the tribunal did rule unanimously that even under the GI Bill of Rights, veterans' seniority may be cut by a new union contract.
That opinion, delivered by Justice Frankfurter, upheld the layoffs of three veterans by Lockheed Aircraft Corporation of California within the first year after they resumed their war-interrupted jobs. A wartime contract provided that union chairmen of various company de-

Czechs Continue Seizing Catholic Foes Of Commies

PRAGUE, Czechoslovakia, June 22.—(AP)—Church-state tension mounted Tuesday as the Communist government was reported seizing Roman Catholic opponents in Moravia.

Churchmen reported numerous clergy and prominent laymen arrested in that province, southeast of Prague near the Austrian and Hungarian border junction.

One source reported, without confirmation, that Archbishop Josef Matocha of Olomouc, second city of Moravia, had been placed under a police watch like that maintained for the past five days over Archbishop Josef Beran of Prague.

Reports of the arrests followed a hectic weekend which saw a pastoral letter from Beran read in churches throughout the country denouncing the separatist Catholic action group sponsored by the government, and the break-up of the archbishop's sermon in Prague by Communist heckling.

The Moravian arrests were made, church sources said, to crack resistance of loyal Catholics to the separatist group. They said those arrested, whose number could not be estimated, had refused to sign pledges of allegiance to the new organization. The Vatican, meanwhile, denounced the group as "schismatic, anti-Catholic, a Communist tool and in opposition to the episcopate."

The supreme sacred congregation of the holy office declared that voluntary membership in the organization would automatically bring excommunication to those joining. It further pronounced the excommunication of "the authors and promoters of it." By implication this affects President Klement Gottwald and other officials sponsors.
Excommunication denies the sacraments and the companionship of Catholics to the persons so banned.

Population per square mile of arable land is 68 in Russia, 102 in the United States, 500 in Italy, 587 in Germany and 2,430 in Japan.

its horse and ridden off in all directions.

The U. S. District Court at Baltimore and the Circuit Court at Richmond had held, as did the Supreme Court in 1904, that the District is not a "state" for lawsuit purposes.

Monday's opinion decided that it is.



OUT OUR WAY

By J. R. Williams

Professional Nursing Now In Urgent Need Of Career Girls; Salaries Good

By THELMA LAIRD, R. N., American Nurses' Association
The registered professional nurse is an important player on today's health team, helping to make the American dream of health and good medical care for all come true.

Of all those on this medical-sociological team engaged in conserving life, curing illness, preventing diseases and disability, the nurse spends most time in intimate contact with the patient and often interprets and adapts the contributions of the other members. Thus, nursing offers unique opportunities to the person whose human interest is keen enough and responsive enough to constitute a real "gift" for people.

Choice Of Five Fields

There are five major fields for the registered nurse: (1) hospital and other institutional, (2) public health, (3) education, (4) private practice, (5) industrial.

The registered nurse may be a staff member or a director of a hospital nursing service, working in one of the specialties such as surgery, psychiatry, tuberculosis, pediatrics. She may participate in important research. She may be a visiting nurse, the nurse in an industrial plant, or a nurse consultant. She may be an instructor or director in a hospital or university school of nursing, or an expert on a surgical operating team. She may teach in or direct a health education program, using public speaking, writing, and other creative talents. In war or peacetime she may serve her country as an officer in the Nurse Corps. She may join a Federal Agency such as the Veterans Administration, Indian Service, or Public Health Service. She may travel, or work in foreign countries in missions, foreign government posts, business enterprises, or round-the-world health and post-war rehabilitation projects.

To become a qualified nurse, a high school graduate should be a good student, in good health, an accurate worker, a conscientious person, a stable personality, and a truly sympathetic, friendly person.

Since the demand for nurses grows constantly, job security is favorable. Like teaching, social work, and other service professions, nursing has never paid high salaries, compared with some occupations. However, the professional association's active program for better pay and working conditions has brought marked gains.

Salaries Attractive
Annual salaries for hospital staff nurses range from \$1,800-\$2,640. In public health, the young nurse may receive \$2,200-\$3,300. Usually private duty brings \$8-\$10 per 8-hour day. For the nurse with advanced education and experience, many opportunities offer higher salaries. Many hospitals are adopting the 40-hour week, and schools of nursing are finding that good times are as wholesome for nurses as for other young people.

How does one get started? The

most important step is choosing a good school. (1) You may write to the National League of Nursing Education, 1790 Broadway, New York 19, N. Y., for advice on schools, scholarships, and so on. (2) Contact the professional nurses' association in your state and community. A letter to the American Nurses' Association, 1790 Broadway, New York 19, N. Y., will give you names and addresses of persons in your area who can give you dependable information and advice.

PICNIC SLATED

The Girl Scout Leadership Association of Roseburg will hold an outdoor meeting with a picnic dinner Thursday at 6:30 p. m. at Kiwanis Park. All members and troop committeemen are urged to be present.

MODEL CLUB TO MEET

The Roseburg Model Club will meet Friday at 7:30 p. m. at the home of Carl Fair. All members are asked to be present.

Bees Go By Air
Billions of live bees are flown by air to hives throughout the U. S. to increase honey production.

U. S. Payments In Lieu Of Taxes Spells Huge Cost

WASHINGTON, June 22.—(AP)—The House Public Lands Committee was told it would cost the government between \$200,000,000 and \$300,000,000 a year to pay states certain amounts instead of taxes on federal property.

Keith L. Seegmiller, Washington representative for the National Association of County Officials, said the figures were a "general estimate," based largely upon detailed estimates from 12 states.

The in lieu of tax payments would compensate for tax losses sustained through the acquisition of federal properties.

A bill to set up a commission to determine the amounts of such payments due each state is now under consideration by the committee.

States submitting estimates of the amounts due them should the bill pass included Oregon \$4,965,000 and Washington \$5,443,000.

Fire Equipment Co.

All types of Fire Extinguishers and Refills.
GLENN H. TAYLOR
CO2 Service
220 N. Main St. Phone 1433-R

Thinking Machine Can Do 15,000 Arithmetic Problems A Minute

CAMBRIDGE, Eng.—(AP)—Scientists at Cambridge University are about to unveil a thinking machine with a "brain" which weighs a ton. It can do 15,000 arithmetic problems a minute—but it's a moron.

So says M. V. Wilkes, one of the mathematicians who developed the huge gadget.

"If you tell the machine to do something silly it goes on doing it," he explained to reporters.

"I liken it to a calculating machine operated by a moron who cannot think but can be trusted to do what he is told."

The thinking machine—known as "Edsac"—takes its orders from a punched tape and spits out the answers on a teletype machine.

Its brain consists mainly of 3,500 electronic tubes massed in 120 racks. Ten men have been busy assembling the thing since early in 1946. It covers 500 square feet of floor space.

The machine's full name is "electronic delay storage automatic calculator." It is called that because it can store up instructions and figures in its artificial "memory" and use these in making its calculations.

"Edsac" does a single multiplication in one five-thousandth of a second and complete operations of addition, subtraction and multiplication go on at the rate of 15,000 a minute," Wilkes said. "Its use will lead to advances

being made in subjects such as nuclear physics, aerodynamics and in astral physics on problems including the equilibrium of stars and why they are their particular size and brightness."

"Edsac" will be introduced to some of the world's leading mathematicians from Britain, Europe and America at a conference here.

American cities grew at a much slower rate in the 1930-40 decade than ever before.

Fewer Replacements with

CHAMPION

BRAKE BLOCKS-LININGS FRICTION BLOCKS

Dependable Products that are "Kind" to Your Equipment and Overhead.



CHAMPION FRICTION CO.

EUCLID, OHIO



Phone 1261-R

For repairs on your typewriter or adding machines.

KEN'S OFFICE EQUIPMENT

631 S. Stephens

SAWDUST

SLAB WOOD

PLANER ENDS

DENN-GERRETSEN CO.

Phone 128

402 W. Oak

JUNE SALE

of

PITTSBURGH PAINTS

	WAS	NOW
WALLHIDE FLAT per gal.	4.27	3.72
WALLHIDE SEMI-GLOSS . . . per gal.	5.49	4.78
WALLHIDE GLOSS per gal.	5.49	4.78
WATERPAR ENAMEL per gal.	7.67	6.13
FLOPHIDE ENAMEL per gal.	6.04	5.25
SUNPROOF HOUSE PAINT . . per gal.	6.01	5.42

West Coast Building Supply Co.

Corner Mill and Mosher
Phone 362

Outperforms in any car because it contains more of the rich "tiger stocks"

SMOOTH

QUIET

POWERFUL

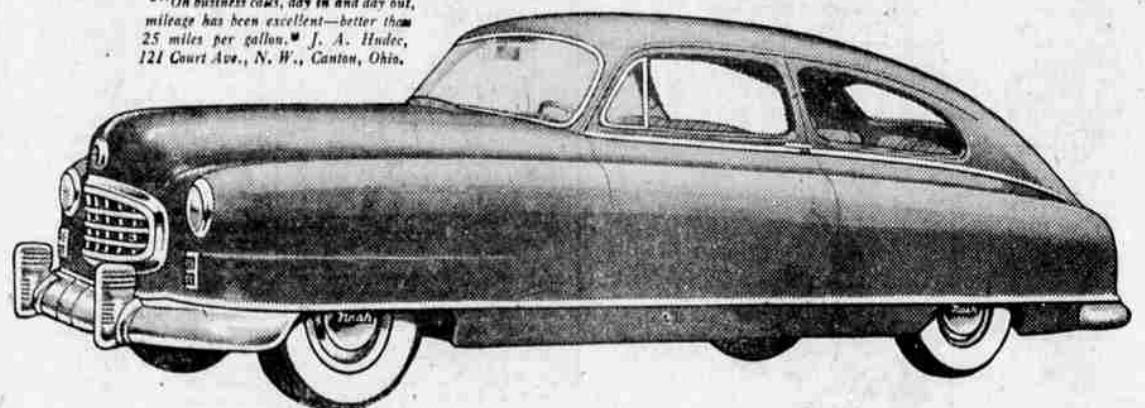


AT HELPFUL ASSOCIATED DEALERS

TIDE WATER ASSOCIATED OIL COMPANY

THE FIRST IN DESIGN

"On business calls, day in and day out, mileage has been excellent—better than 25 miles per gallon." J. A. Hudec, 121 Court Ave., N. W., Canton, Ohio.



IS FOREMOST IN ECONOMY

The car that's first today in style—in comfort—in performance—is also first in economy.

Only Nash is so perfectly streamlined, one sweep of wheel-enclosing curve.

None other has seats so wide they turn into Twin Beds . . . such passenger room, luggage room and road clearance, all in a car only 62 inches high.

And none other as big as the Nash "600" delivers over 25 miles to the gallon* at average highway speed. This is the value only Nash can build with Girder-built Unitized Body-and-Frame.

Only with scientific Nash construction can full use be made of coil springs on all four wheels. Weight is swung lower for new road-hugging stability . . . squeaks and

rattles eliminated . . . rigidity increased 50%.

And only Nash gives you Weather Eye Conditioned Air . . . Uniflow Jet Carburetion . . . the Uniscope and a curved, undivided windshield on all models.

See and drive the most popular car Nash ever built—the Airflyte that's breaking all records in our 47-year history. Your Nash dealer will gladly demonstrate a Nash "600" or Ambassador.



America's Most Advanced Engineering Design

Here is the only car scientifically designed with Girder-built Unitized Body-and-Frame—one solid, welded low-slung unit—the greatest basic improvement in 48 years. Expands interior room . . . adds 50 percent greater rigidity . . . eliminates useless excess weight . . . prevents body squeaks and rattles—gives you a bigger, better, safer car.

Nash Airflyte
GREAT CARS SINCE 1902

COOPER MOTOR CO.
Oak and Pine Streets, Roseburg