

ATLANTIC CITY, N. J., June 22. —(AP)—Kiwanians were told Tuesday "the key to world peace may be food."

J. W. G. MacEwan, dean of agriculture at the University of Manitoba, Winnipeg, told the 34th annual convention of Kiwanis International:

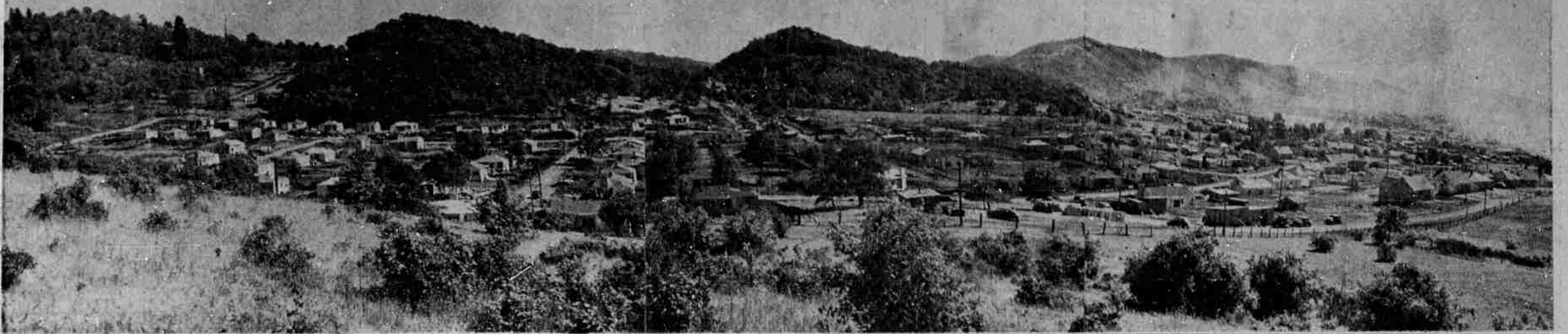
"By well directed food policies, we stand to improve soils, increase security, feed hungry people and create good will among men." MacEwan said it takes two and a half acres each to give everyone in the world an adequate diet, but there are only two acres per person available.

The News-Review

Established 1873

ROSEBURG, OREGON—WEDNESDAY, JUNE 22, 1949

★ 146-49



Housing Shortage Relief For Roseburg Seen In Development Of New 180-Home Cloverdale Park Addition North Of City

By LEROY INMAN

Relief of Roseburg's vital housing problem is seen in the near-completion of a project which will make available to local home seekers 180 housing units. These are the homes—each of which are separate, individual structures—being erected in Cloverdale Park Addition north of the city and east of Highway 99.

Accompanying pictures here—necessarily taken while the project was underway—tell in part the housing project's story itself, but they leave untold the story of the vast housing need, which has been extremely critical since the war year of 1944.

In that year the city of Roseburg's formerly static population of slightly over 4,000 persons began to mushroom to its present estimated population of 15,000 living within a radius of three miles from the city center.

With new construction during war years virtually impossible, housing demand far exceeded the available number of homes. The coming of more and more people with industrial expansion required that many homes be converted into apartments and that families double up in other residences. Even since the relaxation of government demands for lumber, housing has still been unable to keep pace with the rapid growth.

High cost of materials and booming real estate prices have made it impossible for many persons to build the type of homes they desire. Consequently many, requiring living quarters, have moved on to other localities or have been forced to build temporary dwellings in the fringe areas, hoping someday to expand their facilities into permanent residences.

But even this has failed to meet the housing demand. Many local mills have necessarily curtailed their output because of insufficient labor to man extra shifts. Likewise industries interested in locating here have been encouraged to wait until the housing situation cleared.

Recognizing Roseburg's future possibilities and willing to risk a million dollar investment, the Ketell Construction Co., with offices in Los Angeles and Portland, organized Roseburg Homes, Inc., with H. R. Ketell as president. When engineering had been completed, construction of the 180 homes in the Cloverdale Addition was begun.

Financing Aid Offered

While the sales price of the homes will be on a basis comparative to present real estate values, the attractive feature to local home buyers is the financing program. Financing will be by FHA, with down payments as low as 10 per cent of the purchase price, and the balance in monthly payments like rent. Ketell has offered financial assistance to those unable to make the full 10 per cent down payment required by FHA.

Fies and Clute Realty, exclusive agents, has announced plans for a formal dedication ceremony Sunday, June 26, when some of the homes will be open for inspection by the public. Model homes will be displayed, complete with blinds, drapes and furniture, through the courtesy of several Roseburg firms. A ribbon cutting ceremony is being arranged.

While only a few of the homes are now completed, others will follow in short order. The method of large scale production makes for quick erection and finishing.

Modernity Is Keynote

Half the homes will be two-bedroom and half will be three-bedroom structures. The houses are of conventional construction,

NEARS COMPLETION—Pictured here are scenes in the new Cloverdale Park Addition, which, when completed, will make available to Roseburg home-seekers 180 new houses. The top picture is a panoramic view of the area, looking toward the east and on to the south toward the city of Roseburg. The next series of pictures shows the homes as seen from various angles. Streets had not yet been paved when these pictures were taken, and landscaping remains to be completed. Below is a series of closeup views of the several types of houses. The lower right picture in the series of four closeups is a picture of Gordon Todd's home. This is located in the housing project erected by Todd Construction Company adjoining the new addition. (Pictures by Paul Jenkins)



MEANIE STUFF
LOS ANGELES, June 22.—(AP)—They say anything can happen here . . .

Ten-year-old Harvey Bronstein sobbingly told police a man stepped up to him as he was playing, snatched off his glasses, stepped back a pace and asked "How many fingers am I holding up?"

"Two," answered Harvey, correctly.

"You don't need glasses," the man retorted, ground Harvey's under his heel and stalked away.

SUTHERLIN Jo Ann Amorde Rides Float In Floral Parade

Mrs. Jennie Amorde and Mrs. Kay Simmons spent last week in Portland and attended the Rose Festival and also visited Mrs. Amorde's daughter, Jo Ann, the former "Miss Oregon of 1947." Miss Amorde had the honor of riding on the Meier and Frank float in the parade, as she is an employee of that firm.



SWING KILLS CHILD
PLAINVIEW, Texas, June 22.—Carol Smith, 7-year-old daughter of Mr. and Mrs. Wendell R. Smith was killed yesterday while playing in her swing.

She apparently swung too high. The swing overturned and her head was crushed by a supporting cross-bar. She was dead on arrival at the hospital.

the lumber being furnished by a local mill. The completed homes will be fully insulated, have weather stripped windows, forced air heat, aluminum gutters and down spouts.

Fourteen different house designs are being used. All lots are drained, graded and grassed. Driveways, as well as streets are paved with plant-mix paving. Sidewalks are concrete. The rolling terrain has been divided into large lots with house arrangements so that every window provides an advantageous view.

LIPSTICK PREVENTS FIRE
LUCIEN, Okla. —(AP)—A. D. Schnaltheim found a new use for lipstick—and prevented a train fire.

While on the station platform here, he saw fire shooting from the journal box on one of the wheels of a freight train.

He quickly took his girl friend's lipstick, picked up a piece of cardboard and scrawled "fire." Engineer Otto Brammer and Conductor Dan Wright saw the warning sign and stopped the train in time.

of the Christian Church.

Mr. Kelso of Portland made several business calls in Sutherlin Tuesday.

Mrs. Grace Wood and her children, Leon Riggs, and Mrs. Nellie Peterson, who spent several days in Chehalis, Wash., last week, have returned home.

Albert Slack, who enjoyed a two weeks' vacation at Greenleaf, Ore., and at Sunnyside, Wash., returned home Saturday and reported that he had a very enjoyable time visiting with his children.

Mrs. Belle Cook is enjoying a visit with her son and family, Mr. and Mrs. Dean Cook at North Bend.

Donald Green made a business trip to Portland Friday returning home Saturday evening.

The Parent-Teachers Association Mothers Chorus sang two selections at the morning service

Confucius was born in China in 551 B.C.

The News-Review classified ads bring best results. Ph-ne 100.



PHOTOS of the Rodeo and Parade 76 Different Pictures. Prints for Sale . . . priced from 50c each

Keep these lifelong reminders of one of Oregon's best rodeos.

On Display This Week At

MASTER PHOTO STUDIO
435 N. Jackson

CHAIN SAW HEADQUARTERS

Repairs and Service On All Makes Chains Sharpened

All Work and Parts Guaranteed.

Don't be without your Chain Saw in the woods. Bring it in to us for fast and efficient repairs.

PACIFIC CHAIN SAW
Your Mall and I. E. L. Headquarters
Hiway 99 and Garden Valley Rd. Phone 1152-J

Learn to Swim... SWIM THE WEEK

If a Fish Can Swim . . . Why Can't You?

This is National Swim for Health Week, reminding us that swimming is the most healthful exercise we can enjoy.

Roseburg has a modern swimming pool and life guards to help you learn how to swim. Classes are continuing through the summer, so come down and register for swimming lessons any morning after 10 a. m.

Municipal Swimming Pool
Ray Brown, Mgr.

BUTTERFLIES ON A 'BAT'
NEW ORLEANS. — George Berg, who has a collection of 15,000 butterflies, says he caught most of the insects by getting them drunk. He sets out totting fruit for bait, the fruit juices ferment, and the butterflies that drink it get too tipsy to fly away.

WINDOWS DOORS FRAMES
Priced Right
PAGE LUMBER & FUEL
164 E. 2nd Ave. S. Phone 242

AUTO-TRUCK GENERAL LIABILITY FIRE

Auto insurance is a lot like life insurance. The question is—Can you pass the examination? Many people can't. It doesn't cost you anything to try.

Paul H. Krueger
District Agent
636 S. Stephens St. — Roseburg — Phone 21a