

To _____

THE ASSOCIATED PLYWOOD MILLS, INC.

Congratulations upon the completion of your new modern mill. This event marks another milestone in the progress of your good company.

It has been a pleasure to furnish our lumber products in helping to build your new plant.

We are happy to extend our best wishes for a long and successful operation and to welcome your company to the industrial family of Douglas County.

YOUNGS BAY LUMBER CO.

ROSEBURG

OREGON

HOWARD COOPER

Corporation

SENDS ITS BEST WISHES TO THE ASSOCIATED PLYWOOD MILLS, INC.

on the occasion of opening your new plant. You have been a leader in advancing Western logging methods. We salute you for your progressiveness. Congratulations to "the timber capital of the nation" for a fine modern mill.

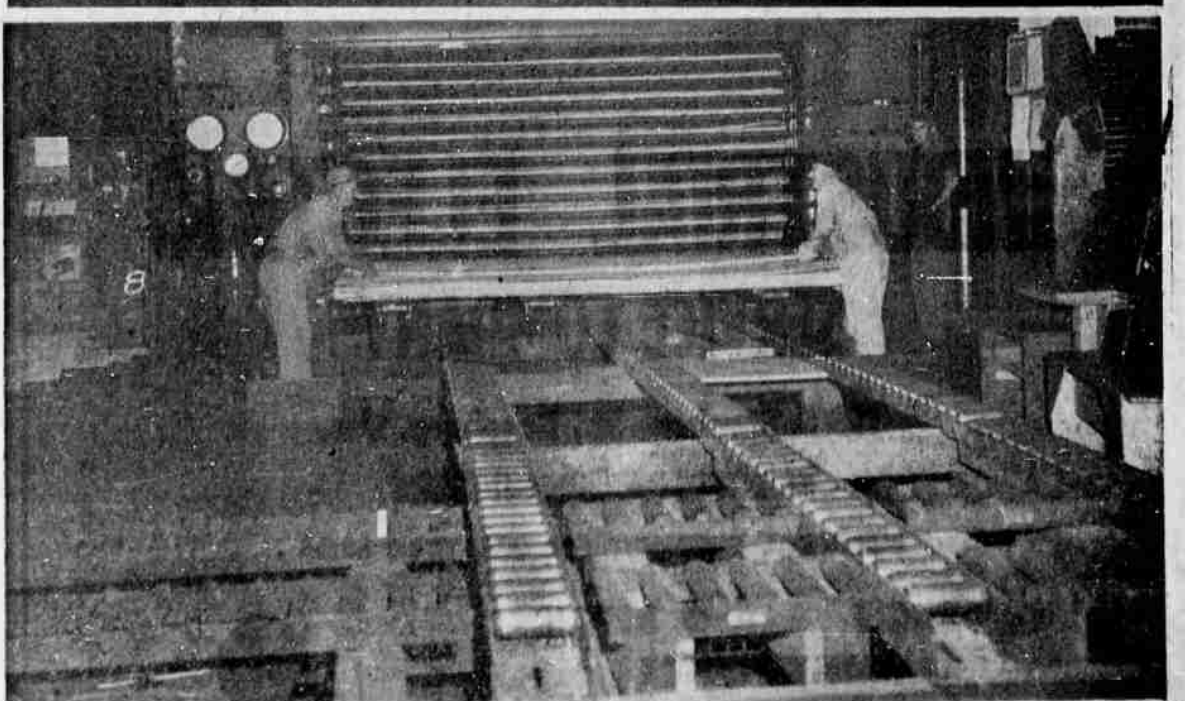
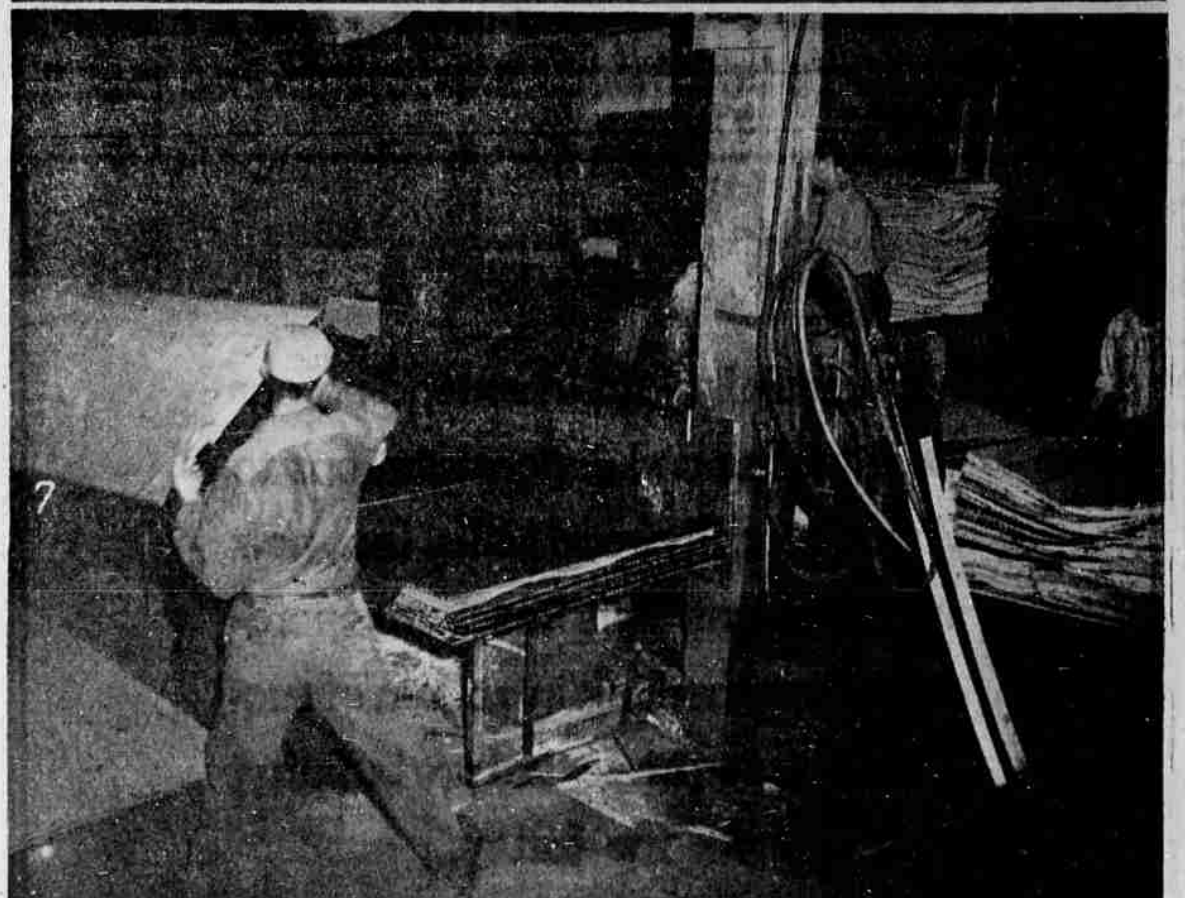
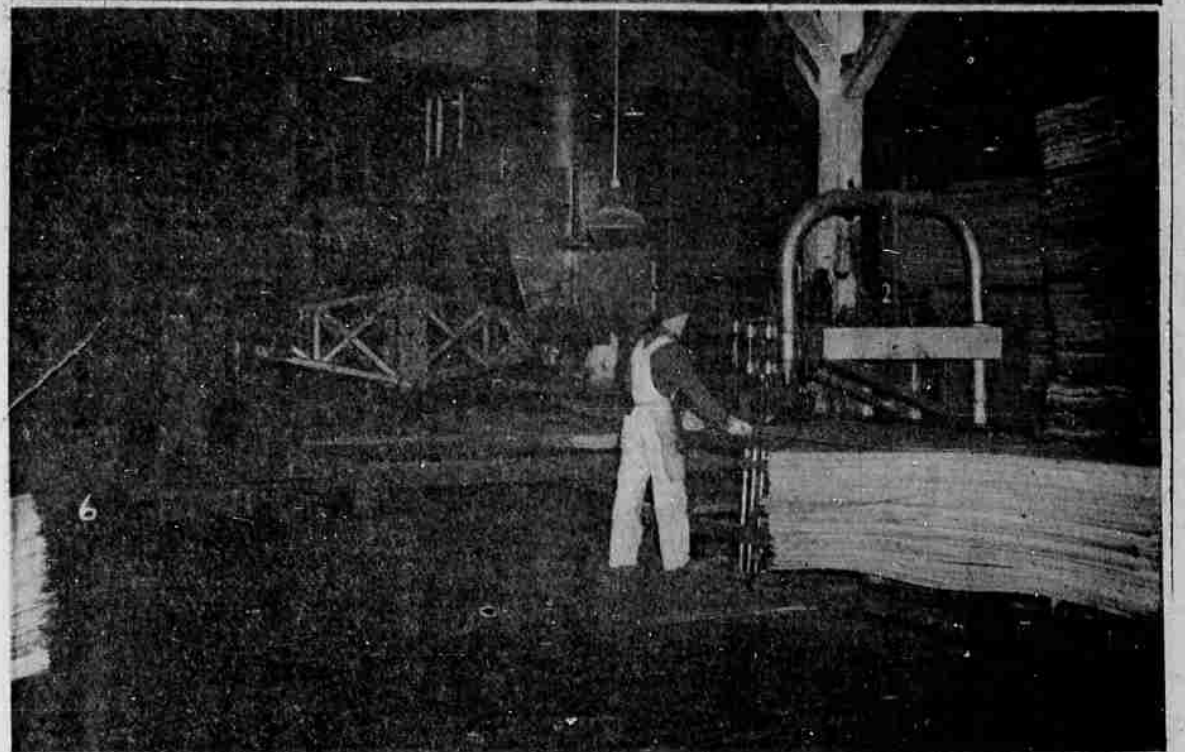
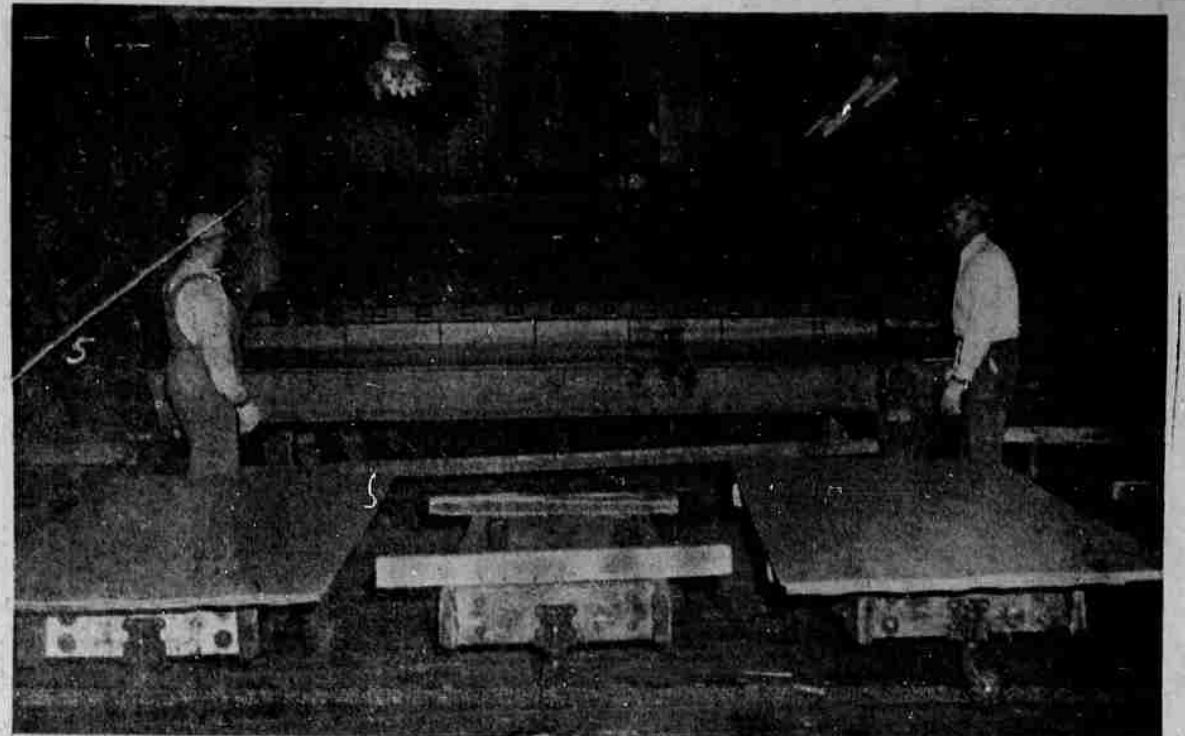
Howard Cooper

CORPORATION

DISTRIBUTORS FOR

- ★ International Industrial Power
- ★ Cedar Rapids Rock Crushing Equipment
- ★ J. D. Adams Motor Graders
- ★ Link-Belt Speeders—Shovels—Cranes.
- ★ Schramm Air Compressors
- ★ Isaacson Iron Works

LOGGING, CONTRACTING & FIRE-FIGHTING EQUIPMENT



VENEER INTO PLYWOOD—Green veneer goes into drier after being cut to size, emerging for further steps in manufacture of plywood. (5) Veneer comes out of the dry end of drier. (6) Patching of sheet veneer is next step, with machine stamping out knots or other defects in wood and replacing with patches. (7) Veneer sheets receive coats of glue, then are placed one sheet over another. (8) Under hard pressure, glued sheets become plyboards in hot press. More pictures on next page.