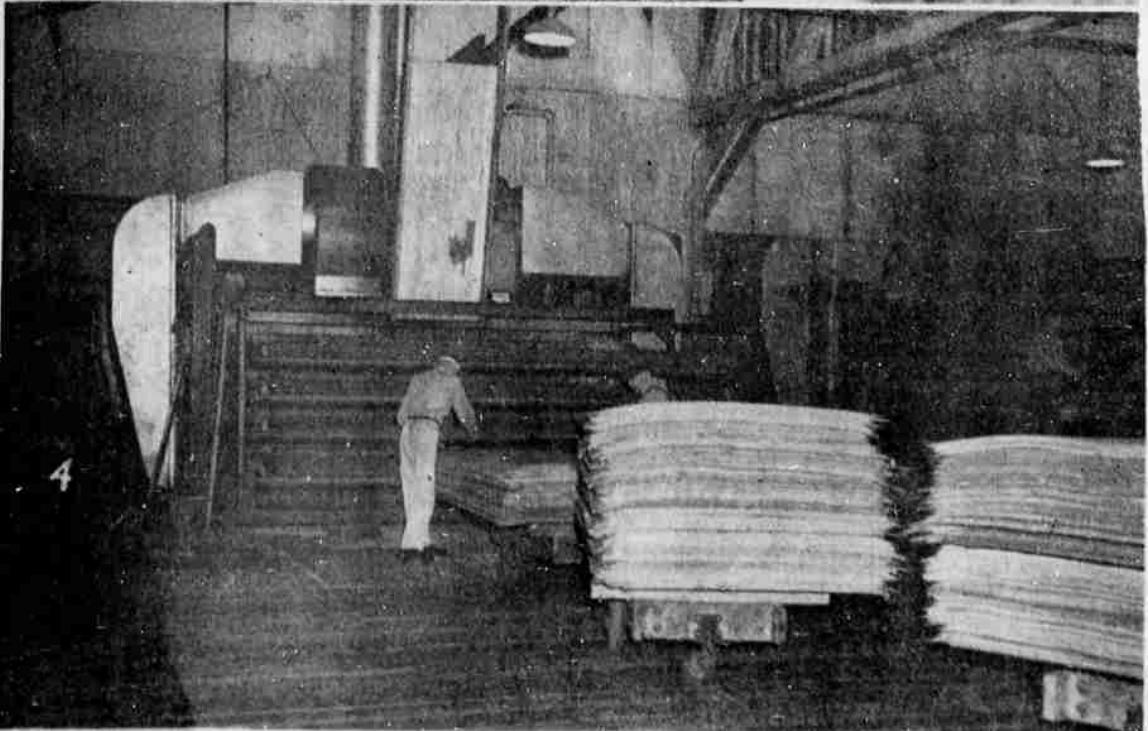
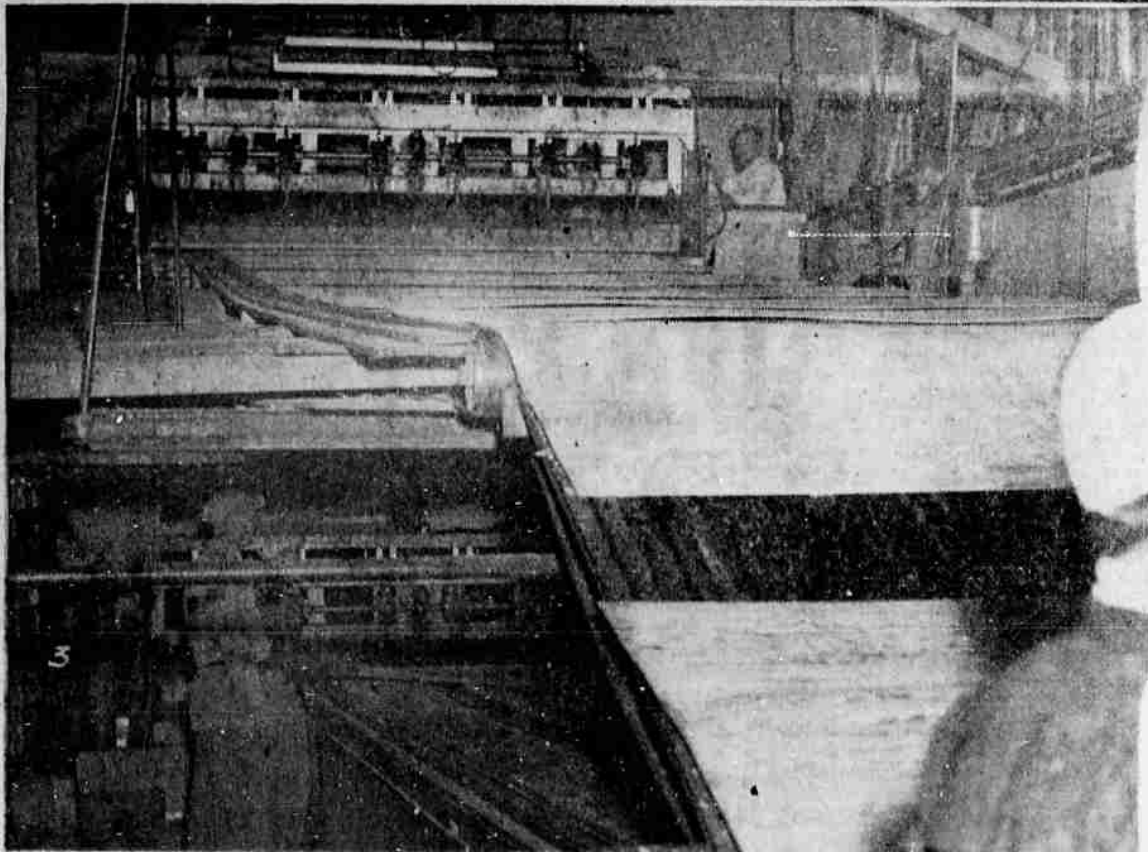
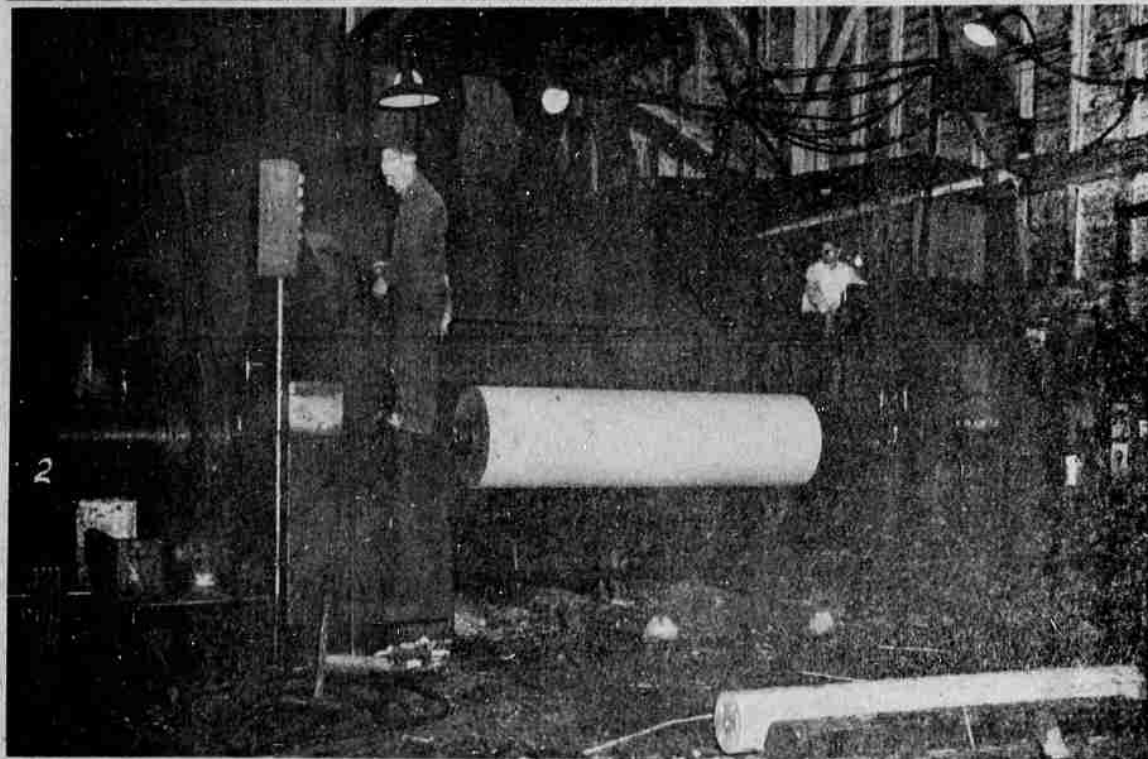


**Plywood Production, Step-By Step**

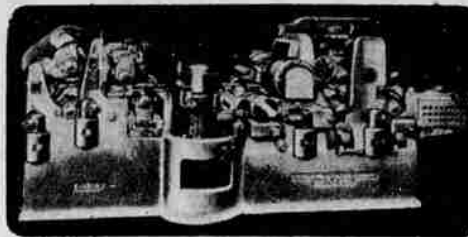


**FROM START TO FINISH**—These pictures show the step-by-step production of plywood, from the time the logs are lifted into mill until they are shipped as finished plywood boards. (1) After logs are lifted from pond into mill, mechanical barker removes layer of bark. (2) Veneer is peeled from logs in continuous strips by lathe. (3) Clipper cuts veneer into desired sizes. (4) From the clipper, veneer into drier. These scenes were taken in the Associated Plywood Mills, Inc., Eugene plant. More pictures on opposite page.

**PLANING and MATCHING**

The Final Step in Producing Fine Lumber

Sound Timber, expert logging, aggressive management, and modern mill methods are all necessary for quantity production of quality lumber. All links in the production chain are vital, but it takes final excellence of finish to command the premium lumber market. Consistently, Stetson-Ross planers and matchers are securing this profit advantage for far-sighted mill owners.



Above is a photo of the modern Stetson-Ross 6-10-A1 Planer and Matcher furnished for the Associated Plywood Mills' new plant in Roseburg. It is capable of planing between 40,000 and 80,000 board feet of finely finished lumber each 8 hour shift.

Important new principles, developed by our engineers in building the world's most highly productive planers and matchers are designed into this machine. The 6-10-A1 Planer and Matcher is used not only by large Western lumber planing mills, for its reputation as a high production planer has spread to the South, the Atlantic Coast, Canada, Mexico and Hawaii where satisfied owners all commend it highly.

We wish the Associated Plywood Mills every success in this new venture and are proud of our part in tooling their planing mill.

**STETSON-ROSS**  
MACHINE COMPANY  
SEATTLE 4, WASHINGTON

**BEST WISHES  
AND  
GOOD LUCK  
TO  
ASSOCIATED  
PLYWOOD MILLS, INC.**



**Cummins Diesel Sales  
of Oregon, Inc.**

- PORTLAND, OREGON—  
1235 S. E. Grand Avenue—Telephone EAst 7146
- EUGENE, OREGON—  
731 Garfield Street—Telephone 3164.
- KLAMATH FALLS, OREGON—  
11th and Klamath Streets—Telephone 6175.
- PENDLETON, OREGON—  
D. H. Johnson, Representative—Telephone 2934.
- MEDFORD, OREGON—  
Don Jones, Representative—Telephone 8455.

TO

**ASSOCIATED PLYWOOD MILLS INC.**

We Extend Our Heartiest

**CONGRATULATIONS**

on the occasion of the Formal Opening  
of their new sawmill in Roseburg . . .

Modern engineering skill has achieved in this mill an outstanding example of efficient planning and superior equipment. Its completion marks a milestone in the progress and industrial growth of the City of Roseburg and Douglas County.

With a new payroll and steady employment for more workers, the community may be justly proud of this notable contribution to its future welfare.

**SUMNER IRON WORKS**

Designers and Builders of Machinery for  
SAWMILLS—PULP & PAPER MILLS—SHINGLE MILLS  
EVERETT, WASHINGTON