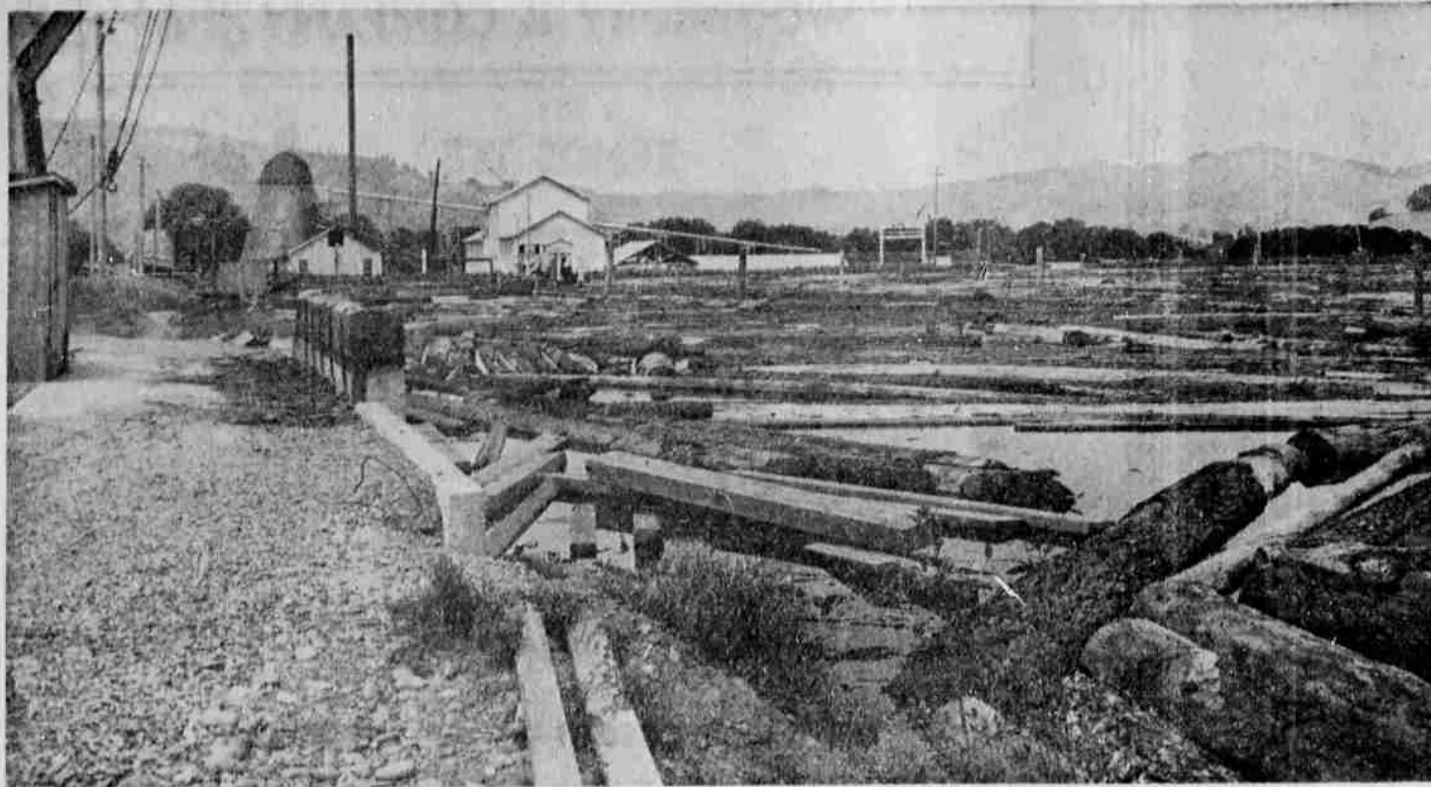


### Extensive Log Pond Serves Sawmill At Green



**MANY LOGS FLOATED HERE**—Here is a view of the Associated Plywood Co.'s log pond at Green. The pond covers 15.5 acres and is capable of floating 6,000,000 feet of logs. All logs cut on the company's operations on Little River are transported here and dumped into the pond for segregation. Sawlogs are cut in the new sawmill (seen in distance), while paelars are shipped by rail to the plywood plants at Eugene and Willamina. The pond was in use here a number of years before the sawmill was erected, being used as the receiving point for logs cut on the company's logging operations in this county. Associated Plywood's yards surrounding the pond include rail loading facilities, the new sawmill, resaw, burner and other modern facilities.



MILLARD ROBERTSON, Manager, Lumber Division



DALE WILLIAMSON, Mill Foreman

SHEETS • PLATES • STRUCTURALS • HOT ROLLED BARS • SHAFTING • BOILER TUBES • WIRE ROPE  
REINFORCING BARS • SPECIAL STEELS • COPPER SHEETS AND TUBING

We most sincerely congratulate the  
ASSOCIATED PLYWOOD MILLS, INC. upon  
the completion of their new mill and  
wish them all possible success now and  
in the years to come.

We have been privileged, as a supplier  
of steel, to participate in the building  
of this great mill. From our modern, fully  
stocked steel warehouse we will continue to  
serve the needs of the rapidly growing  
industrial area of Roseburg.

**MOORE STEEL SERVICE COMPANY INC.**  
2050 CROSS STREET  
EUGENE, OREGON

Congratulations to

### Associated Plywood Mills, Inc.

It has been our pleasure to provide,  
through our unobstructed  
ed floor area required to  
on.  
May you prosper in your new plant.

- Roof Trusses
- Glued Laminated Arches and Beams
- Timber Rafters
- Packaged Utility Buildings
- Highway Bridges
- Drive-In Screen Towers

### Timber Structures, Inc.

Eugene Division  
Ralph Fullbright, Manager  
P. O. Box 549, Eugene, Oregon  
Telephone 2407

# Congratulations to...

## THE ASSOCIATED PLYWOOD MILLS, INC.

upon completion  
of their

### MODERN BAND SAWMILL

It was a privilege for us  
to work with them on the  
design and construction of this mill

# KLAMATH MACHINERY CO.

R. E. (Gene) Hooker      H. J. (Homer) Ellis

Designers of Complete, Modern  
Sawmills and Planing Mills

SAWMILL CONSULTANTS OF 20 YEARS EXPERIENCE

P. O. Box 781

Klamath Falls

Phone 5628