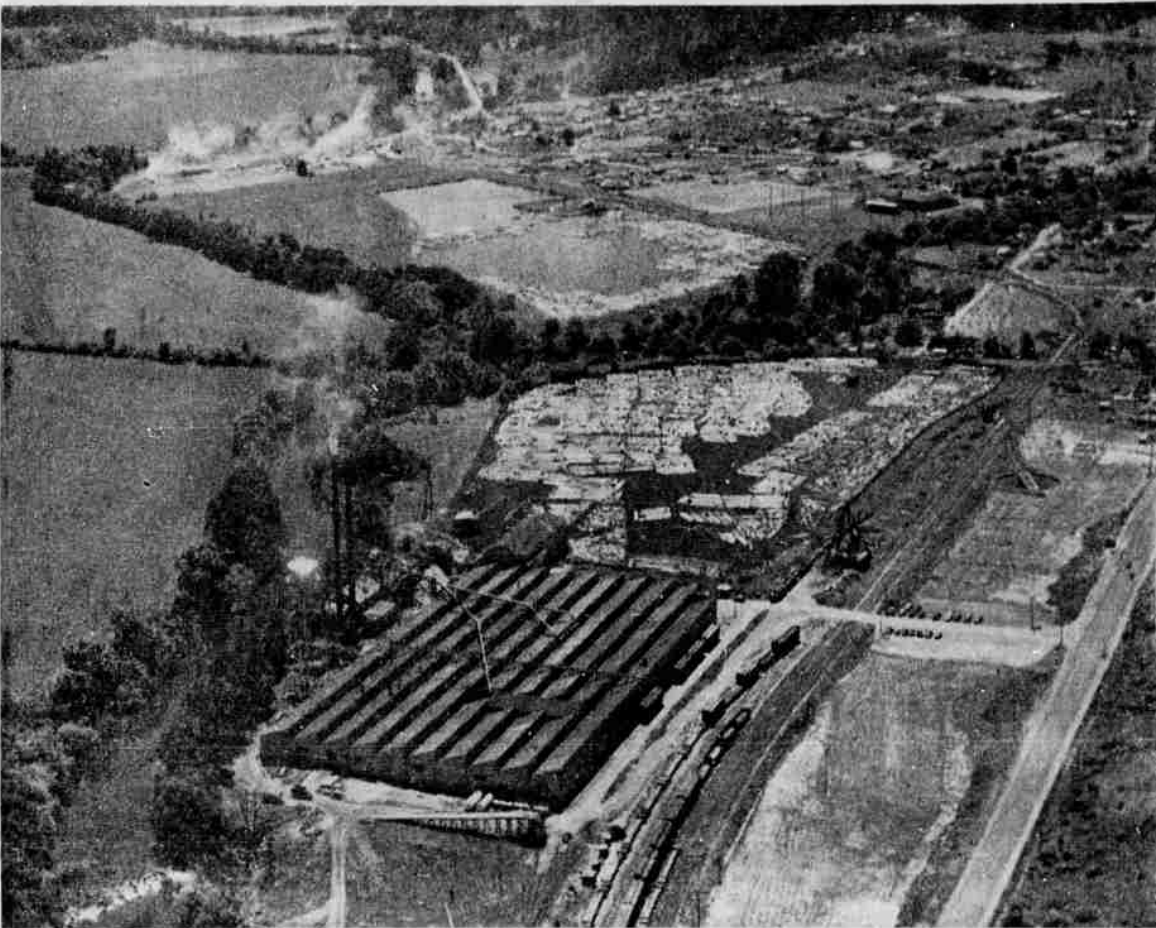


**PLANT AT EUGENE**—Sited in the industrial area at the north end of Eugene, the Associated Plywood Mills, Inc., plant there is shown in the aerial view above. This modern plywood mill was erected in 1940 by the old Aberdeen Plywood Co., and covers 120,000 sq. ft. of floor space. Its log pond covers 25 acres and is capable of floating 12,000,000 feet of peeler logs. This plant is served by the Oregon Electric Railroad. Neither this plant nor the one at Willamina have ever had any type of shutdown other than normal, routine shutdowns, according to company officials. Eugene and Willamina plants have combined total production capacity of 160,000,000 feet of 3/8-inch basis of plywood per year.



**WILLAMINA MILL SHOWN**—Aerial view of the Associated Plywood Mills, Inc., plant at Willamina is shown here. It covers 164,000 square feet of floor space while its log pond includes 35 acres of water. The pond is capable of storing 16,000,000 feet of peeler logs. The plant is situated between the Yamhill River and the Southern Pacific Railroad tracks, which in turn parallel the Salmon River cut-off Highway. The mill was constructed in 1939, when dwindling log supplies in Washington State forced the company to investigate the possibility of locating a plywood plant in Oregon.

Congratulations and Best Wishes to  
**Associated Plywood Mills, Inc.**  
 Upon the Opening of Their New, Modern Sawmill

FROM



Manufacturers of High Quality Circular Saws  
 Machine Knives • Band Saws • Files

SIMONDS SAW AND STEEL CO., FITCHBURG, MASSACHUSETTS

**WOODBURY & COMPANY**

SENDS ITS  
**BEST WISHES**  
 AND GOOD LUCK

TO  
**ASSOCIATED PLYWOOD MILLS, INC.**

on the occasion of the opening  
 of your new sawmill at  
 Roseburg, Oregon

As a valued and friendly customer  
 we at Woodbury & Company wish  
 you a long and successful  
 operation.

**WOODBURY & COMPANY**  
 OF PORTLAND, OREGON

INDUSTRIAL SUPPLIES  
 Distributors of Heavy Hardware

We cordially extend heartiest  
 congratulations and best wishes  
 to Associated Plywood Mills, Inc.  
 on the opening of their new sawmill  
 at Roseburg, Oregon

We are proud to have furnished and  
 installed the boilers and wish their  
 new operation every success in the  
 future.

**F.E. BALDEN CO.**

122 W. First Avenue

Portland, Oregon

REPRESENTING  
**UNION IRON WORKS OF PENNSYLVANIA**

Other Installations at:

- |                                       |                                     |
|---------------------------------------|-------------------------------------|
| Elk Lumber Co. .... Medford, Ore.     | Donbar Lumber Co. .... Eugene, Ore. |
| Goose Lake Box Co. .... Alturas, Cal. | Mogan Lumber Co. .... Eugene, Ore.  |
| Trask Lumber Co. .... Trask, Ore.     | Palet Co. .... Lebanon, Ore.        |