

NEA Urges Barrier On Red Teachers

Communism Teaching, Not Advocacy, Favored By Leading Educators

WASHINGTON, June 9. — (AP) — Twenty top-flight educators including General Dwight D. Eisenhower and Harvard President James B. Conant — said Wednesday Communists should be barred from the teaching profession.

They agreed too, that principles of Communism should be taught but not advocated—in American schools.

Their charge that Communist membership "renders an individual unfit to discharge the duties of a teacher in this country" was described by a National Education Association official as the most outspoken statement on that subject ever made by an education group of nationwide standing.

Eisenhower, now president of Columbia University; Conant and 18 fellow members of an Education Policies Commission made their observations in a 54-page report on "American Education and International Tensions."

The Commission was appointed by the National Education Association and the American Association of School Administrators.

Its purpose was to study the teaching changes that might be achievable in view of political tensions that may "keep the world in a state of cold war for years to come."

Policy Set Forth

The Commission listed these "main lines of strategy" for American education:

1. "Young citizens should have an opportunity to learn about the principles and practices of totalitarianism, including those represented by the Soviet Union and by the Communist Party in the United States. The study should be accurate and objective, and should make use of basic official documents."

2. "Teaching about Communism or any other form of dictatorship does not mean advocacy of these doctrines. Such advocacy should not be permitted in American schools. While we expose and combat subversive activities in this country and abroad . . . we must at the same time curtail reactionary forces which would use anti-Communist sentiment as a club to threaten every effort to improve society through education."

3. "The schools should continue with vigor their programs for giving young citizens a clear understanding of the principles of the American way of life and a desire to make these principles prevail."

"Members of the Communist Party on the United States should not be employed as teachers."

The Commission condemned the careless and unwise use of such words as "Red" and "Communist" to attack teachers and others whose views differ from those of their accusers. It added:

"It is because members of the Communist Party are required to surrender the right to think for themselves as a consequence of becoming part of a movement characterized by conspiracy and calculated deceit, that they should be excluded from employment as teachers."

Ex-Salem Educator's Body Found in River

CHICO, Calif., June 9. — (AP) — The body of Dr. Herbert E. Rahe, 45, Chico State College professor who drowned May 28, has been recovered from the Sacramento River.

The former Willamette University

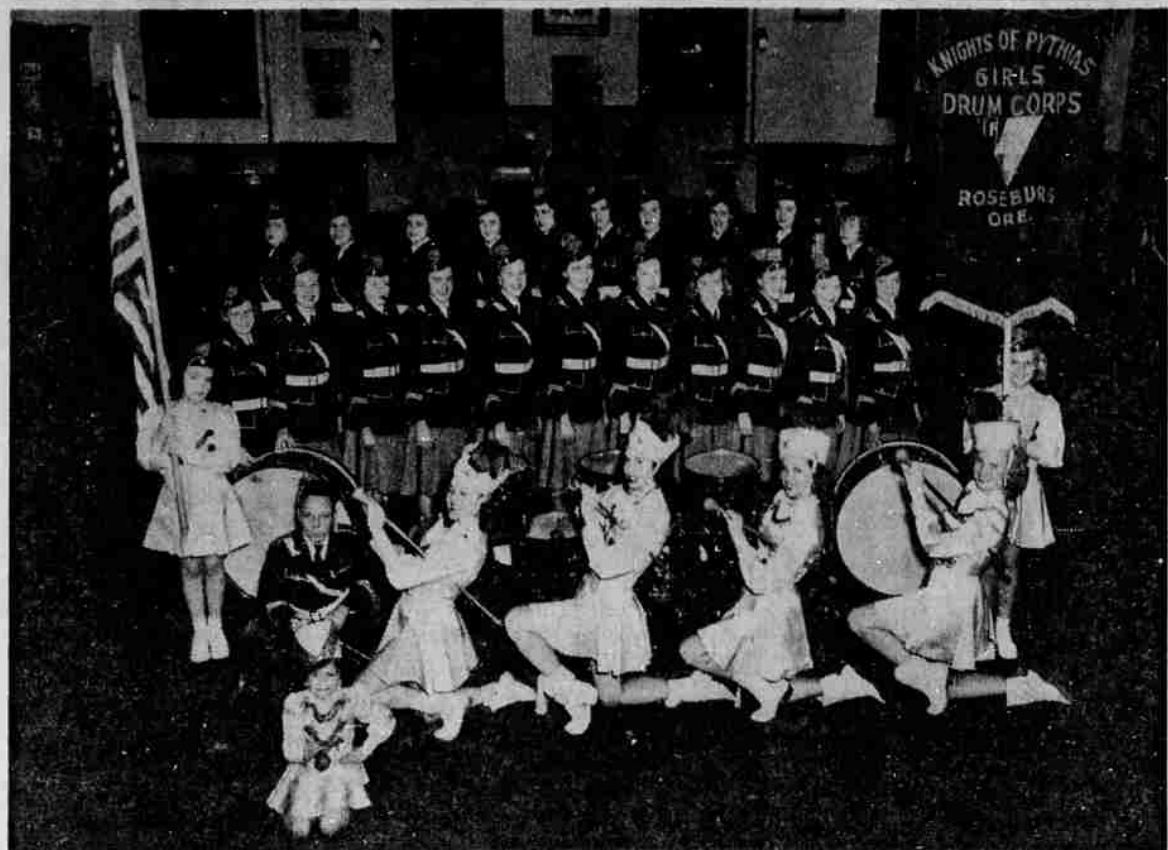
The News-Review

Established 1873

ROSEBURG, OREGON—THURSDAY, JUNE 9, 1949

SECTION TWO

★ 135-49



LEAVE FOR FESTIVAL—Director Bill Black and his Knights of Pythias Drum Corps left early today for Portland, where they will take part in the Rose Festival parade Friday morning. The fast stepping group has attained recognition wherever it has appeared. Pictured here are: (in front) Mascot Tiny Sweet, first row (left to right), flag bearer Sylvia Sweet, majorettes Peggy McCoy, Joan Rutter (group leader), Nadene Sparks, Valeria Sparks and standard bearer Mary Anne Backen; second row, Noren Allen, Beverly Henbest, Norma Johnson, Joan Hugh, Willa Wilshire, Joan Long, Betty Clark, Peggy Reid, Sandra Rapp, Betty Ann Harvey and Pat Mears; back row, Dona Mears, Cynthia Turner, Betty Burr, Fern McGreggor, Susan Molschenbacher, Joan Taylor, Betty Reid, Zona Wilshire, Danese Doak and Lois Hess. Majorette Nadene Sparks, this year's Douglas County Sheriff's Posse Rodeo queen, has been replaced by "Rusty" Stephenson. Others making the trip who do not appear in the picture are Margaret Tucker, Pat Stovall, Rena Van Horn, Charlene Dietz, Jackie Daniels, Nancy Allen and Helen Mariott. (Picture by Photo Lab.)

Tomato Plants On Fence Produce Best Crops In The Small Garden

Careful tests have shown that on a given ground area more tomatoes can be grown on plants pruned to a single stem and tied to a stake or fence, than in any other way. They ripen earlier, too, and in many ways this method is best for the amateur with a small vegetable garden.

Single stem plants may be spaced a foot apart; plants pruned to double stems may stand 21 inches apart, while plants that sprawl on the ground require from 24 to 10 square feet, depending on variety.

Varieties of normal vine growth are the only kind that should be staked and pruned. So-called determinate varieties, of which the stems stop growing after they reach a certain length, while the plant develops all its energies to ripening the fruit which has set, should never be pruned, and get no benefit from staking, but they may be planted 18 inches apart, and allowed to spread on the ground. They bear a good early crop, but over a shorter season than the normal varieties.

Keep Plants Pruned

Keeping tomato plants pruned and tied needs constant attention. At the joint where each leaf grows on the main stem, a branch will develop, and this must be cut or pinched off before it is four inches long, otherwise its removal will weaken the plant.

To grow a two-stem plant, select one branch coming from the main stem 10 inches above the surface, and allow both main stem and branch to grow. Single stem plants can be twisted about a supporting cord. Two-stem plants may be tied with material that will not cut arranged in a loose loop around the stem, to avoid constriction.

Here's Requirements

Tomatoes require full sun, heavy feedings and regular watering. When the soil is allowed to dry out, with fruit set, a black decay spot known as "blossom-end rot" may develop on the fruit. Watering during dry spells will prevent this.

A heavy mulch of dry lawn clippings, several inches deep, covering the soil will help keep the water supply even. Before setting out tomato plants, spade a complete plant food into the soil, using at least 4 pounds for each 100 square feet. When fruit begins to set, plant food should be applied to the soil surface in a circle several inches from the stem, but do not stir the soil deeply, as the roots spread widely near the surface and should not be disturbed.

HOUSEHOLD FURNITURE

- 1 9-ft. Servel refrigerator.
- 1 Magic chef gas range with trash burner.
- 1 Electric washing machine.
- 2 Bedroom sets.
- 2 Baby beds & mattresses.
- 1 3/4 bed and mattress.
- 2 Full size beds and mattresses.
- 1 Buffet, large size.
- 1 Dining table, round oak, 3 chairs.
- 2 Dressers.
- 1 Chest dresser.
- 1 3-way floor lamp.
- 1 Electric mangle.
- 3 Radios, 1 battery, 1 record player set, 1 electric set.
- 1 Large circulating wood heater.
- 1 Drop leaf kitchen table.
- 1 Fruit jars, dishes, etc.
- 1 12-gauge shotgun.
- 1 22 caliber rifle.

GARDEN TOOLS

- 1 Garden tractor.
- 1 Planter Jr. seeder.
- Lots of chop tools — jacks, chair block, 1/2-inch electric drill tap & die set.
- 1 Cylind torch with gages.
- 1 Shop master bench saw.
- 1 6 in. bench planer.
- 1 Bench vise.
- 1 3 in. centrifugal pump on suction pipe 110-220 v. 2 h. p. motor.
- 1 Barrel shop heater.
- Also 1 sheet iron heater.

Lunch Served at Noon
Lee Higley and A. T. Anderson, Owners
J. E. Cooper, Auctioneer
Mike Daniels, Clerk

VITAL STATISTICS

MARRIAGE LICENSES

MORRIS-CHURCH — Carl Edward Morris and Pauline Church, both of Myrtle Point.

MITCHELL-MESSIER — Douglas Berny Mitchell, Scottsburg, and Janet Catherine Messier, Derry, N. H.

HOBSON-MAULT — William George Hobson and Rosaleen Marie Mault, both of Canyonville.

DAME-KOBERNIK — Joe Marilyn Dame and Carolyn Emily Kobernik, both of Roseburg.

AGUSTINA - LIVENGOOD — James Raymond Agustina and Norma Hazel Livengood both of Coquille.

CAIRNS - GILHAN — Verlin Junior Cairns and Marjorie Jean Gilhan, both of Roseburg.

Divorce Suits Filed

ANDERSON — Edwin C. vs. Helen Anderson, Married at Longview, Wash., Oct. 26, 1940. Cruel and inhuman treatment charged.

BLOMME — Dorothy Jane vs. Billy Blomme, Married at Los Angeles, Calif., Dec. 19, 1943. Cruel and inhuman treatment charged. Custody of their one child, \$25 a month support and ownership of their household furnishings asked by plaintiff.

EMMONS — Irene B. vs. Roland Emmons, Married May 23, 1947. Plaintiff asks for a decree annulling their marriage, alleging that defendant's divorce from a former marriage had not become legal under residence requirements at the time of their marriage. She also asked that her former name of Irene B. Wangemann be restored.

FOGEL — Dean vs. Darlene Fogel, Married at Roseburg Feb. 2, 1946. Cruel and inhuman treatment charged. Plaintiff asks that custody of their two children be given to their paternal grandparents, James and Mildred Fogel, Roseburg.

STREET — Ethel M. vs. Daris W. Street, Married Jan. 1, 1949, at Roseburg. Cruel and inhuman treatment charged. Plaintiff asks that her former name of Ethel M. Oakley be restored, and that she be granted ownership of furniture located at 508 No. Pine St.

Divorce Decree Granted

RENFRO — Mary from William F. Renfro.

Blast, Fire Level Home, Hospitalizes Woman

NEWBERG, June 9. — (AP) — A stove explosion resulting from kindling a fire with oil that contained gasoline, put Mrs. Ella Hamilton in a hospital here Tuesday.

Her home, west of Sherwood, was destroyed by the blaze. A daughter, Frances, pulled her mother out of the house and beat out the flames in her clothing. Mrs. Hamilton's condition was

Riddle School District Job Opened to Bids

Bids are being invited for the construction of a primary wing of a new elementary school for District 70, Riddle. Plans may be obtained from the office of Robert A. Miller, architect, 420 Equitable Building, Portland, upon deposit of \$25 for general and \$10 each for plumbing, heating and electrical. Bid opening date is set at 8 p.m., June 14, at the elementary school in Riddle.

Unique in construction and planning, all classrooms of the building will have north light with window walls on the north side and a large overhanging roof. Ceilings will be sloped in from the outside. Construction will be semi-fireproof, with pumice block and brick walls and partitions, concrete slab floors, acoustical ceiling and wood roof framing.

The primary wing will have complete facilities in each classroom. An open corridor will also provide for covered play area. Tentative plans call for five primary rooms and five secondary, a full gymnasium, library and office suit.

Corvallis Votes 'No' On Liquor Store Proposal

CORVALLIS, June 9. — (AP) — Corvallis apparently wants no part of a liquor store, and nearby rural areas want no part of Corvallis.

In a special "advisory" election held here Tuesday, Corvallis voters disapproved establishment of a state liquor store in the city by a vote of 1367 to 742.

The official question on the ballot, annexation of an area about half the size of the present city, was favored by Corvallis voters but turned down by those residing in the area it was proposed to annex. Inside the city the measure carried 1629-422 but the fringe area had 168 no votes to only 104 in favor.

Special Levies Voted By Multnomah County

PORTLAND, June 9. — (AP) — Portland and Multnomah County voters put their check on special levies in an election Tuesday. School district voters approved a \$2,520,000 levy by an unofficial 34,601 to 18,424.

County voters gave a less enthusiastic nod to a \$1,975,000 levy 30,812 to 25,820.

In both instances the added money is expected to maintain services and salaries threatened with curtailment or cancellation.

NEW LOW PRICE

Ladies' Mojud Stockings
New Colors
New Styles

HARTH'S TOGGERY
128 N. Jackson

Juvenile Delinquency, Forest Camp Fees Topics Of Debate At Toastmasters' Session

That juvenile delinquency is an "overt expression of parent delinquency" was argued by Russell M. Stephens, in a debate with Jim Turk at the Toastmasters Club meeting Tuesday night. Turk charged that it is "a bad, the popular thing to do" to attribute juvenile delinquency to parents.

Stephens declared that children cannot have any sense of responsibility unless it is instilled in them by their parents. During adolescence, youth goes through certain physical changes which it has no way of understanding, while adults forget they went through this period.

During adolescence, children need love from their parents, a sense of belonging and worthwhileness. Unless children receive this love from their parents, said Stephens, they will seek to model themselves after undesirable characters.

Turk declared that all children come into the world with a natural "savagery" instinct. As they grow up, parents teach them to respect laws and conventions of society. Parents are responsible for their early education. Children, however, retain the urge to "upset the apple cart." Juvenile delinquency is "a Halloween urge gone out of hand."

Turk said he blamed juvenile delinquency in part to the low-paid teaching field, which does not always attract the best teacher material; to "some types of comic books," pulp magazines, sub-standard movies. Parents, however, have "the most cause to love and protect their children."

Camp Fees Debated

In a second debate, Charles Slaugh argued in favor of charging fees for use of public forest camps, in order that the public's enormous investment might be protected and to make camping more convenient for the public.

Roy W. Barnhart opposed such fees because these camps represent "the last frontiers" where the public can enjoy unrestricted recreational advantages of the forest.

In a speech entitled "Rags to Riches," Tom Coates reviewed the life of the late A. P. Giannini, head of the Bank of America, as "a wonderful example of the opportunities of America." He attributed Giannini's success to introduction of competitive methods to the banking business. Delbert Parker concluded the evening with an amusing travelogue of a trip to Diamond Lake.

Jerry Willis served as toastmaster of the evening. Glenn Clark was evaluator of the program. In the business session, it was voted to hold an outdoor meeting at Umpqua Park at 7 p. m., June 21. Members will bring their families for a potluck supper.

The News-Review classified ads bring best results. Ph-ne 100.

'One Last Fling' Pair Get Chance To Start Anew

OLYMPIA, June 8. — (AP) — A married couple who landed in trouble having "one last fling" before separating now have a chance to start anew.

Raymond and Louise Dewey of Kent each drew jail sentences Wednesday after pleading guilty to grand larceny and third degree assault charges.

Superior Judge Charles T. Wright, however, suspended the sentences when Dewey, 26, and his wife, 24, promised to try to make a go of their marriage and establish a home for their two small children.

County Prosecutor Ralph R. Gilby said the couple had slugged and robbed John McDaniels of Enumclaw of some \$50 Saturday night on a lonely road near Tenino. They met McDaniels in an Enumclaw tavern.

The Deweys, married when 18 and 16, told the court they were having "one last fling" together at the time before separating due to marital troubles.

URANIUM NOT MATERIAL

FRANKFURT, Germany, June 9. — (AP) — A U. S. military government court ruled Wednesday that uranium in its natural state is not necessarily a war material, and acquitted nine Germans on charges of possessing a 2,300-gram block of it (about 81 ounces).

Uranium in its processed form is used in making atomic bombs. Judge Fred G. Cohn of Raleigh, N. C., said that if uranium in its natural state was a war material then the same would be true of all materials that could be used for making weapons.

"If the element uranium is deemed to be a war material, there must be legislation to that effect," he said.

WALLPAPER

200 Patterns
18c to \$1.20
Page Lumber & Fuel
164 E. 2nd Ave. S.
Phone 242

PITCO'S OPEN HOUSE

Saturday—June 11

All Day

REFRESHMENTS

Pittenger's Pitco of Roseburg

1819 N. Stephens Highway 99 North

FARM SALE

On the Lee Higley Ranch, 6 Miles Southwest of Sutherlin on the Umpqua and Coles Valley Road

Sunday, June 12

Sale Starts at 10:30 Sharp—Watch for Signs

- 1 M. W. cream separator with electric motor.
- 1 J. D. 8 ft. Disk.
- 1 3-Section Disc Harrow.
- 1 I. H. C. hay loader.
- 1 7 ft. I. H. C. grain drill.
- 1 I. H. C. mowing machine with swather (on rubber).
- 1 Dain 5 ft. mowing machine.
- 1 2-bottom 14 in. Oliver plow.
- 1 Double disc.
- 1 I. H. C. plow.
- 1 I. H. C. 5 ft. disc.
- 1 All steel buzz saw.
- 1 Blacksmith forge, an anvil, some tools.
- 1 22 Caterpillar tractor with hydraulic dozer.
- 1 Iron wheel wagon with hay rack.
- 1 1929 Model A Ford 1 1/2-ton truck.
- 2 Sets harness and collars.
- About 1000 ft. 4x12x10—some ship lap—some 2x4, 6 & 8 ft.—some oil drums.
- 1 J. D. 10A hammer mill — new.
- Lot of scrap iron.
- 1 7-tooth J. D. cultivator.
- 1936 Chevrolet Master Coupe.

- 2 10-ft. ladders, 15-ft. ladder, forks, shovels, hoe, garden hose, etc.
- STOCK**
- 5 Milch cows.
- 1 First calf heifer.
- 2 2nd calf heifers.
- (All bred and milking.)
- 2 Older cows.
- 2 16-mo. heifers bred.
- 4 Steers, yearlings.
- 3 Spring calves.
- 1 Guernsey bull, 3 yrs. old.
- 1 Work horse.
- 8 Doe rabbits, some fryers, some with litters.
- 1 Buck.
- About 2 1/2 doz. laying hens.
- 2 Hens with baby chicks.

White, Neutral, Green, and Red in cool kid with Flexible Crepe Soles.

Arbuckle's Right on Jackson

White, Neutral, Green, and Red in cool kid with Flexible Crepe Soles.

Johansen JUNIORS

Puts spring in your step and enjoyment in every walk you take. Treat yourself today to a pair of our comfortable "TIME OUTS" by Johansen Junior.

White, Neutral, Green, and Red in cool kid with Flexible Crepe Soles.

Arbuckle's

Right on Jackson

Western

Up to \$250.00 for Your Old Bike!

For Real Fun and Sport, Ride a New **Hiawatha "Chippewa"**

Our Regular Low Price \$9.95
If Your Trade-In Is \$25.00

Your New Bike Only . . . **34.95**
and your old bike

- Streamlined With New, Rugged "Jet-Flow" Frame
- "Lustra-Chrome" Fenders, Tank and Chain Guard

Sturdy as a buffalo, streamlined as an arrow and as swift as a deer. Extra safe electric stop tail-light, white sidewall tires. Compare these features: Diamond Silent Chain, New Departure or Bendix Brakes, Torvington Pedals, Delta Lights, and Troxell Saddle. Trade your old bike for a "Chippewa" now!

JUNIOR HIAWATHAS, 24" bikes for youngsters to 12 years. **39.95**
JUVENILE HIAWATHAS, 20" bikes for youngsters to 7 years.

All Bikes Available in Boys' and Girls' Models

Western Stores

WESTERN AUTO SUPPLY CO. Stephane and Cass
Phone 97