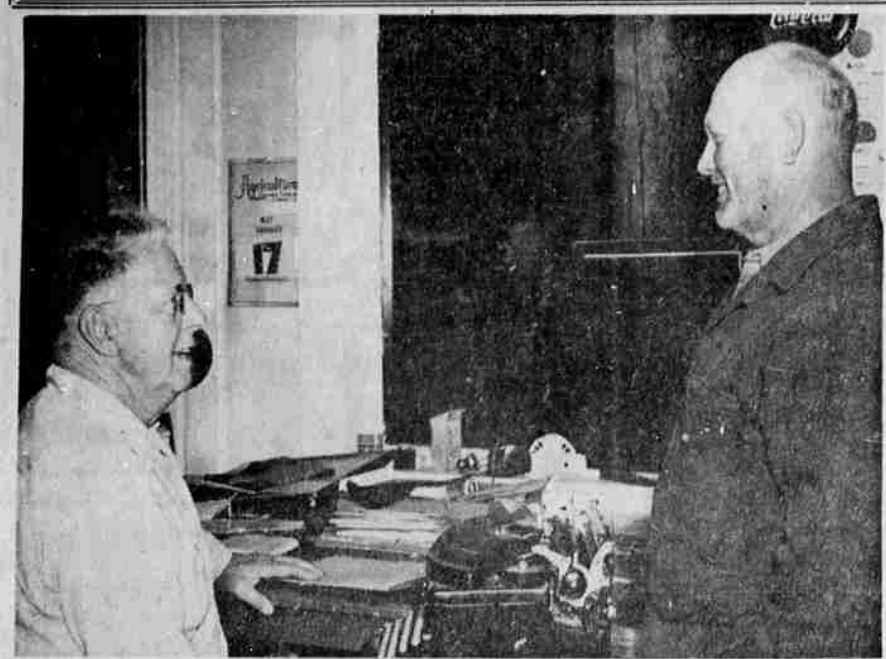


# I SAW

... By Paul Jenkins



I SAW LEWIS WEAVER, ex-jp, and Al Mault, present mayor of Canyonville, in hilarious conversation in Lewis' office there. The hilarity, I discovered, arose from a free discussion concerning the luxuriousness of Al's whiskers which, indeed, had prospered during a recent stay up the North Umpqua River.

Al, a builder and contractor, is preparing the footings which will support the big H-frames suspending the Copco power line which will extend from Tokete to Dixonville. He and his crew now are working above Boundary.

"Remember the last barbecue the R. & G. club held here, which Maggie Fluh attended?" Lewis asked me.

I recalled it. Maggie, as usual, was extremely hospitable and had piled me with so many venison sandwiches that I had made something of a reputation for myself.

I remembered the first time I had ever seen her, too. That was 20 years ago and I had stopped at her place near Milo to get acquainted. No one was home. I returned to my car, which I had parked beside the corral at the roadside.

While lighting a cigaret preparatory to leaving, a great commotion sounded up an adjacent hillside, quickly came closer preceded by a rush of flying gravel and out from the brush obscuring a trail burst an elderly, gray haired woman on horseback.

Without a glance at me she crossed the road, dismounted, stripped saddle and bridle from her pony and slapped his rump with the reins as she hazed him through a gate. Then, dusting her hands, she strode up to my car.

"What in h— do you want?" she demanded.

I explained (somewhat hurriedly) who I was, said that I was from the News-Review and told her why I had stopped.

"Well, I've got a crow to pick with your d— paper," she shouted. "It's about an ad I sent in to have run . . ."

We argued and jawed; but the upshot of it was that she invited me to attend the next barbecue, in which was a famous affair in those days. I've missed Maggie these many years, and sincerely regret her passing.

## Washington, Oregon Areas Receive Seedlings In Record Program Of Reforestation

PORTLAND, Ore.—(Special)—More than 12,000 acres of non-stocked private forest lands of Western Washington and Oregon were planted with nursery-grown seedlings from November through mid-May in the largest reforestation project in the region's history, according to N. E. Bjorklund, forester in charge of the Forest Industries Tree Nursery at Nisqually.

The unique tree nursery shipped 6,755,000 year-old baby trees, Bjorklund said, largest in its seven years of operation. In addition to those shipped, 250,000 Douglas fir trees, 700,000 Noble fir seedlings and 100,000 white and Norway spruce will be carried over to make two-year-old stock.

Bjorklund said the severe winter weather had handicapped the industry's planting program this year. Planting got under way November 16 and lasted until December 23 when intense cold and heavy snow forestalled lifting operations at the nursery and stopped planting in the mountainous areas. Planting was resumed March 1st and continued through mid-May.

**Tree Farms Supplied**

Twenty certified West Coast tree farms in the region received 5,775,000 trees which were planted on approximately 10,500 acres, figuring 550 trees to an acre, Bjorklund stated. Other timber operators received 194,000 trees which planted 350 acres. The State of Oregon planted 680 acres of private forest land with 5,775,000 trees which were planted on small land owners planted 130 acres with 70,000 trees. In addition more than 325,000 trees were given to small owners by the Crown-Zellerbach Corporation, Weyerhaeuser Timber Company and West Coast Lumbermen's Association.

Douglas fir seedling trees accounted for 93.5% of the total production, or 6,297,000 trees, Bjorklund said. Port Orford cedar made up 411,600 trees and 25,700 Monterey pine and miscellaneous trees were shipped.

Forest Industries Tree Nursery is owned by the West Coast Lumbermen's Association and operated as a cooperative venture by sponsoring companies which own forest lands in the two states. Last year the nursery raised 8,000,000 seedling trees and over a million of these will be held over because of the interruption in planting during the winter.

**Millions of Trees Planted**

Since the establishment of the nursery in 1941, Bjorklund pointed out, more than 23,170,000 trees have been grown to plant on areas where fire and other causes have left lands so they did not restock naturally. He said, more than 95 percent of all lands harvested in the Douglas fir region is reseeded by nature when fires are kept out and seed sources left.

Baby trees grown at the industry nursery have been planted on over 40,000 acres of non-stocked forest lands during the last seven years in one of a series of coordinated programs by industry to bring private forests into full production, the forester pointed out. Improved forest management practices of the last decade, increased fire protection and public support of fire prevention programs have strengthened and brightened the forestry prospects here in the Douglas fir region.

## Price Slashes, Wage Increases Asked By CIO

WASHINGTON, May 20.—(AP)—The CIO Thursday called for price reductions and "immediate wage increases."

Unanimously the CIO Executive Board passed three resolutions repeating the CIO's economic program and at the same time expressing grave concern over unemployment.

The resolution on joblessness said "the present volume of unemployment is already extremely critical in many geographical areas."

It said the nation's unemployment in the early months of 1949 has been 50 percent higher than in 1948. It said the CIO Council in each large city should set up a special committee to help jobless members and protect their rights.

On wages, the board was not specific.

In line with CIO policy statements of the last few months, the resolution said that "unlimited price increases and profit taking" have weakened consumer purchasing power and caused lower sales, falling production, and rising unemployment.

## U. S. Mail Service To Most Of China Suspended

WASHINGTON, May 20.—(AP)—The Post Office Department Thursday suspended U. S. mail and parcel post service to most of China as a result of the war there.

The suspension order partly exempted the provinces of Fukien, Kwantung and Kwangsi. The Department will continue to accept letter mail addressed to these provinces, but no parcel post packages.

Elsewhere, all mail service is halted for the present.

**Bergh's**  
Appliance Service  
1200 S. Stephens

Chest Freezers  
Deep Freeze Units  
Combination Freezer and Refrigerators  
Phone 805

FOR **Graduation** give her **A LANE!**

Waterfall Design in Walnut Tray Included

Highest Honors Go to LANE

The only pressure-tested Aromo-Tight Cedar Chest in the world. Beautiful, fragrant, practical! It's the gift that starts the home.

For daughter, sweetheart, mother, wife—The gift that'll cherish all her life!

**LANE**  
Cedar Hope Chest  
GUARANTEED MOTH PROTECTION

**Josse's**  
HOME FURNISHINGS

111 NORTH JACKSON  
JUST PHONE 330

# DIRECTORY OF CHURCHES

## Roseburg Churches

**FAITH LUTHERAN**  
Roseburg Armory  
Willis F. Erickson, Pastor;  
Res. 242 S. Rose St.

**SUNDAY SERVICES:**  
Sunday School, 9:45 a. m.  
Morning Worship, 11:00 a. m.  
Evening services as announced.

**ST. PAUL'S LUTHERAN**  
(Missouri Synod)  
Corey & Military Sts.  
W. A. Sylvester, Pastor;  
Res. 1170 Military St.

**SUNDAY SERVICES:**  
Sunday School, 9:45 a. m.  
Morning Worship, 11:00 a. m.  
Mid-Week Service:  
As announced.

**FIRST BAPTIST**  
Rose & Lane Sts.  
H. P. Sconce, Pastor; Res. 468 S. Main

**SUNDAY SERVICES:**  
Sunday School, 9:45 a. m.  
Morning Worship, 11:00 a. m.  
Youth Groups, 6:45 p. m.  
Evening Services, 8:00 p. m.  
Mid-Week Service:  
Wednesday, 7:30 p. m.

**CHURCH OF GOD**  
Garden Valley Road & Walnut St.  
Rev. A. M. Evans, Pastor

**SUNDAY SERVICES:**  
Sunday School, 9:45 a. m.  
Morning Worship, 11:00 a. m.  
Young People, 6:30 p. m.  
Evening Worship, 7:30 p. m.  
Mid-Week Service:  
Wednesday, 7:30 p. m.

**FREE METHODIST**  
1347 Harvard Ave.  
George Henderson, Pastor

**SUNDAY SERVICES:**  
Sunday School, 10:00 a. m.  
Morning Worship, 11:00 a. m.  
Young People, 7:00 p. m.  
Evening Evangelistic Services, 7:45 p. m.  
Mid-Week Services:  
Prayer and Study, Wednesday, 7:45 p. m.

**CHURCH OF THE OPEN BIBLE**  
Pine & Flood Sts.  
Rev. and Mrs. DeLoss Crook, Pastors;  
Res. 1230 Chatham St.

**SUNDAY SERVICES:**  
Sunday School, 9:45 a. m.  
Morning Worship, 11:00 a. m.  
Overcomers (Youth), 6:30 p. m.  
Evangelistic Service, 7:30 p. m.  
Mid-Week Services:  
Tuesday, Bible Study, 7:45 p. m.  
Friday, Evangelistic, 7:45 p. m.

**FIRST CHURCH OF CHRIST, SCIENTIST**  
312 E. Douglas St.

**SUNDAY SERVICES:**  
Sunday School, 9:45 a. m.  
Morning Worship, 11:00 a. m.  
Mid-Week Service:  
Wednesday, 8:00 p. m.  
Reading Room, 317 Pacific Bldg., open 10:30 a. m. to 4:30 p. m. daily, except Sundays and holidays.

**FIRST METHODIST**  
Main & Lane Sts.  
W. A. MacArthur, Pastor;  
Res. 124 S. Kane St.

**SUNDAY SERVICES:**  
Church School, 9:45 a. m.  
Morning Worship, 11:00 a. m.  
Youth Fellowship, 6:45 p. m.  
Evening Worship, 7:30 p. m.  
Midweek Service:  
Wednesday, 7:30 p. m.

**ASSEMBLY OF GOD**  
948 W. First St.  
Vernon L. Klein, Pastor,  
Res. 946 W. First St.

**SUNDAY SERVICES:**  
Sunday School, 9:45 a. m.  
Morning Worship, 11:00 a. m.  
Young People, 6:30 p. m.  
Evening Evangelistic, 7:45 p. m.  
Mid-Week Services:  
Tuesday, Prayer Meeting, 7:45 p. m.  
Thursday, Bible Study, 7:45 p. m.

**SEVENTH DAY ADVENTIST**  
Main and Lane Sts.  
J. J. Robertson, Elder  
Res. 950 Hamilton St.

**SABBATH SERVICES (Saturday):**  
Sabbath School, 9:30 a. m.  
Worship Hour, 11:00 a. m.  
Youths' Meeting, 3:00 p. m.  
Mid-Week Service:  
Wednesday, 8:00 p. m.

**THE APOSTOLIC FAITH**  
Highway 99, Four Blocks North of Garden Valley Road Intersection  
C. W. Wolf, Pastor  
Res. 1395 Umpqua Ave.

**SUNDAY SERVICES:**  
Sunday School, 9:30 a. m.  
Morning Worship, 11:00 a. m.  
Evening Service, 7:45 p. m.  
Mid-Week Services:  
Tuesday and Thursday, 7:45 p. m.

**SUTHERLIN ASSEMBLY OF GOD**  
Rev. Betty Williams, Pastor

**SUNDAY SERVICES:**  
Sunday School, 9:45 a. m.  
Worship Service, 11:00 a. m.  
Children's Church, 11:00 a. m.  
Young People, 6:30 p. m.  
Evangelistic Service, 7:30 p. m.  
Mid-Week Service:  
Wednesday, Bible Study, 7:45 p. m.

**SUTHERLIN COMMUNITY METHODIST**  
C. E. Brittain, Pastor

**SUNDAY SERVICES:**  
Sunday School, 9:45 a. m.  
Worship Service, 11:00 a. m.  
Youth Fellowship, 6:00 p. m.

**FAIR OAKS COMMUNITY, SUTHERLIN**  
Philip M. Gourley, Pastor.

**SUNDAY SERVICES:**  
Sunday School, 10:00 a. m.  
Morning Worship, 11:00 a. m.  
Young People, 5:30 p. m.  
Mid-Week Service:  
Wednesday, 7:30 p. m.

**ST. JOHN'S LUTHERAN, SUTHERLIN**  
(Missouri Synod)  
Scout Hall, Umpqua & Central Sts.  
W. A. Sylvester, Pastor;  
Res. 1170 Military St., Roseburg

**SUNDAY SERVICES:**  
Sunday School, 7:00 p. m.  
Worship Service, 8:00 p. m.  
Mid-Week Service:  
Second Wednesday, 8 p. m.

**HARRY C. STEARNS**  
Funeral Director

Our service is for all and meets every need. Any distance, any time — Licensed Lady Assistant.

Oakland, Oregon  
Phone 472 or 542

## FIRST CONSERVATIVE BAPTIST CHURCH

Odd Fellows Hall at Jackson and Cass

Bible School 9:45 A. M.  
Morning Worship 11:00 A. M.  
Youth League 6:15 P. M.  
Evening Worship 7:30 P. M.

Rev. Elvin A. Fost, Guest Speaker

The Public Cordially Invited To All Services

## THE LOVE OF GOD FOR A NEEDY WORLD

Evangelist E. Knappe

Preaching the Old Time Religion  
Heartfelt! Soul Inspiring! Unlifting!  
Continuing every night, 7:45 P. M.  
Sunday, 11 A. M., 3 P. M., 7:45 P. M.

**Lighthouse Mission**  
535 S. Stephens Roseburg, Ore.  
Rev. H. K. Miller, Pastor

## FIRST BAPTIST CHURCH

Dr. F. W. Starring, executive secretary for Northern Baptists in Oregon, will speak at both services on Sunday.

11:00 A. M.—  
"Christian Assurance"

8:00 P. M.—  
"The Good News"

Vacation Church School  
Dates June 13 to 24

Dr. F. W. Starring

Graduates of Senior and Junior High Schools will be honor guests Sunday evening. Special program and refreshments.

Listen to KRNR each Saturday at 4:30 P. M.

## Community Churches

**GLIDE BAPTIST**  
K. H. Faulkner, Pastor.

**SUNDAY SERVICES:**  
Sunday School, 10:00 a. m.  
Morning Worship, 11:00 a. m.  
Young People, 6:45 p. m.  
Evening Service, 7:30 p. m.  
Mid-Week Service:  
Wednesday, 7:30 p. m.

**PINE GROVE SUNDAY SCHOOL DIXONVILLE**  
Mrs. Cora Collison, Supt.

**SUNDAY SERVICES:**  
Bible School, 10:30 a. m.

**OAKLAND COMMUNITY PRESBYTERIAN**  
James Brinks, Pastor

**SUNDAY SERVICES:**  
Sunday School, 10:00 a. m.  
Worship Service, 11:00 a. m.  
Youth Fellowship, 7:00 p. m.  
Mid-Week Services:  
Wednesday, 7:45 p. m.

**MELROSE UNION SUNDAY SCHOOL**  
Clarence Hoffmann, Supt.

**SUNDAY SERVICES:**  
Sunday School, 10:00 a. m.  
Worship Service, 11:00 a. m.  
Evening Service, 7:30 p. m.

**SUTHERLIN ADVENTIST**  
J. J. Robertson, Elder  
Res. 950 Hamilton St., Roseburg

**SABBATH SERVICES (Saturday):**  
Worship Hour, 9:30 a. m.  
Sabbath School, 11:00 a. m.  
Mid-Week Service:  
Wednesday, 8:00 p. m.

**LOOKINGGLASS METHODIST**  
C. N. Currier, Pastor  
Res. 710 S. Jackson St., Roseburg

**SUNDAY SERVICES:**  
Sunday School, 10:00 a. m.  
Worship Service, 11:00 a. m.  
Evening Service, 7:30 p. m.

**GLIDE CHURCH OF CHRIST**  
Richard Merriman, Pastor

**SUNDAY SERVICES:**  
Sunday School, 9:50 a. m.  
Morning Worship, 11:00 a. m.  
Mid-Week Service:  
Wednesday, 7:30 p. m.

**GREEN SUNDAY SCHOOL**  
Green Schoolhouse  
Charles Foree, Supt.  
Bernice Oser, Village Missionary

**SUNDAY SERVICES:**  
Sunday School, 9:45 a. m.  
Morning Worship, 11:00 a. m.

## KEEP YOUR FAITH STRONG

**TENMILE**  
W. W. Appleyard, Pastor

**SUNDAY SERVICES:**  
Sunday School, 10:00 a. m.  
Preaching Service, 8:00 p. m. (Alternate Sundays.)

**EEDEN LUTHERAN, ELGAROSE**  
Willis F. Erickson, Pastor;  
Res. 242 S. Rose St., Roseburg

**SUNDAY SERVICES:**  
Morning Worship, 9:30 p. m.  
Sunday School and Adult Bible Class, 10:45 a. m.

**CAMAS VALLEY**  
W. W. Appleyard, Pastor.

**SUNDAY SERVICES:**  
Sunday School, 10:00 a. m.  
Young People, 6:00 p. m.  
Evening Service, 8:00 p. m. (Alternate Sundays.)

**WILBUR METHODIST**  
C. E. Brittain, Pastor.

**SUNDAY SERVICES:**  
Worship Service, 9:50 a. m.  
Sunday School, 10:40 a. m.

**CALAPOOIA FREE METHODIST**  
West Sutherlin  
Kenneth Harger, Pastor.

**SUNDAY SERVICES:**  
Sunday School, 10:00 a. m.  
Morning Worship, 11:00 a. m.  
Y. P. M. S., 8:45 p. m.  
Evening Service, 7:45 p. m.  
Mid-Week Service:  
Wednesday, 7:45 p. m.

**MYRTLE CREEK ADVENTIST**  
J. J. Robertson, Elder  
Res. 950 Hamilton St., Roseburg

**SABBATH SERVICES (Saturday):**  
Sabbath School, 9:30 a. m.  
Worship Hour, 11:00 a. m.

**DILLARD**  
W. W. Appleyard, Pastor.

**SUNDAY SERVICES:**  
Sunday School, 10:00 a. m.  
Morning Worship, 11:00 a. m.  
Young People, 5:30 p. m.

**MISSIONARY BAPTIST**  
Grange Hall, Sutherlin

**SUNDAY SERVICES:**  
Sunday School, 10:00 a. m.  
Morning Worship, 11:00 a. m.  
Evening Service, 8:00 p. m.  
Young People, 7:00 p. m.