

School Expansion Plans Discussed At PTA Meet

By MRS. GERALD B. FOX
Glendale District 77 Parent-Teachers Association at its final meeting May 9, heard a discussion on the proposed new four-room school addition. Superintendent Theodore Lang and School Board Chairman Howard Edison discussed the proposed \$85,000 bond issue for the school annex, modernization of the old building and construction of a teacherage. They also discussed school voting laws.

New officers, elected at the last meeting, were installed as follows: Mrs. Flo Cox, president; Mrs. Stanley Janzer, vice-president; Mrs. Howard Mart, treasurer; and Mrs. Joe Facht, secretary. Refreshments were served by the first grade mothers.

Celebration Planned
Glendale's Chamber of Commerce is looking forward to a big Fourth of July celebration, complete with fireworks, sports and oratory.

According to present plans, an eight-man committee is to be appointed for the occasion. The planning board will be composed of Glendale, Azalea and Wolf Creek residents.

Negotiations are being made with a carnival company, and chamber workers express hopes of obtaining a full assortment of rides, shows and concessions for the crowd's entertainment.

Returns for Mill Job
A. C. Kenny, former general superintendent for the Robert Dollar Company, who has been more recently with the Roseburg Lumber Company in Roseburg, is back in Glendale as local manager of the Hayward Mill here. Mr. Kenny assumed his post May 1, with the Hayward Mill having been thoroughly re-built and modernized in recent months.

Contacted at the mill Thursday, Mr. Kenny expressed himself as being glad to be back in Glendale. He had no comment on his appointment, saying that since his return he had been too busy with the woods operation to spend much time around the mill and the town.

Ball Swells Fund
The firemen's ball, held April 30 in Glendale, cleared \$315.35, which will be added to the fund the Volunteer Firemen are attempting to raise toward a down-payment on the purchase of a new fire engine. The fund now amounts to \$336. Other affairs are being planned to raise additional amounts. A party and box social will be held in the near future. The fire truck being considered at the present time will require about \$3,000 down payment.

Utility Lines Extended
California-Oregon Power Co. is extending its electric service in the vicinity of Glendale with a new line down the old Reuban Road to a point three-quarters of a mile below Reuban, across Cow Creek and back up the new Reuban Road toward Glendale. It will give service to all those in that area who do not yet have it. Fourteen new customers are already being served, and eventually, the line will bring electric service to a total of 44. Most of the holes for power poles are already dug, and completion of the line is being delayed only by the difficulty of clearing right-of-way, particularly in one stretch of land the owner of which has not yet been located.

Animal Gifts Available
Local residents had supposed the Glendale Branch of the Robert Dollar Co. dealt only in lumber, but it has come to community attention that it is also in the "free pet" business.

The company offers, free, a large and friendly mother cat—her four new kittens born in a box after she wandered into the Dollar office 10 days ago, are spoken for but have to stay with their mother a while longer. Other free pets on the list, to be inquired for at the Dollar office, are four Irish setter puppies, all female, but according to their owner, "nice dogs."

FALLS FROM LADDER
Paul Sloan, pre-school son of Ralph Sloan, of Glendale, was rushed to the Josephine General Hospital for emergency treatment May 7, following a fall from a ladder, placed against the side of a house. His injuries are not believed to be serious, and he was allowed to return home.

The World Moves

So Do We

Packing Crating

Storage

See Us for Free Estimates

Agent for Lyon Van Lines

Phone 927

Evenings 329-J-3

Roseburg Transfer & Storage

BROWNIE GROUP EXPANDS

The Glendale Brownie Troop has grown so that the leaders, Mrs. Flo Cox and Mrs. Joe Facht, were forced to ask for help, and the group has been divided into two sections. The new leaders are Mrs. L. A. Boone and Mrs. Jess Mitchell.

BIBLE QUIZ CONTINUES

The Bible Quiz Kids program is being continued in the Glendale Baptist Church. The winner for May 1 was Sylvia Boone, and the winner on the evening of May 8 was Erwin Boldt. Chapters studied for the respective evenings were Mark, 1 and 2.

Emily Post Offers Booklet On Auto Manners

NEW YORK—(AP)—"A gentleman will no more cheat a red light or stop sign than he would cheat in a game of cards," Emily Post speaking.

"A courteous lady will not 'scoot' raucously with her automobile horn any more than she would act like a 'fishwife' at a party."

"Primitive, irresponsible, discourteous and impatient behavior behind the wheel of an automobile has no place in society. . . . The well-bred person will see courtesy and well-mannered human conduct in practically every traffic rule."

These are quotes from a traffic safety booklet, "Motor Manners," issued by the National Highway Users Conference.

Mrs. Post, whose name has been synonymous with rules of etiquette for many years, wrote the pamphlet free of charge.

It's to be distributed free to individual motorists. The grateful highway users—an organization of groups such as truck drivers and the American Automobile Association—tendered Mrs. Post a luncheon. The principal speaker was Federal Works Administrator Philip B. Fleming, general chairman of the President's Highway Safety Conference. He said:

Hot Dogs, Ice Cream To Vanish In Tomorrow's World, Savant Predicts

NEWARK, N. J. — (AP) — There'll be no hot dogs and ice cream in the world of tomorrow. They are too expensive on a "geochemical" basis.

That's the prediction of Prof. Eugene G. Rochow of Harvard.

But there will be compensations. There may be machines that build your house with earthenware bricks as it digs out the foundation. When you wake up in your new adobe house, you'll pull off your pajamas and eat them for breakfast. The professor was awarded a \$1,000 prize for his research in

sand derivatives. The ban on hot dogs and ice cream must come, he said, because the world is eating up its resources too fast.

Prof. Rochow said meat and eggs must disappear from man's diet because the animals producing them consume too much food. So that leaves tenderloin steak out of the picture too in Prof. Rochow's bright new chemical world.

Clothes must come from synthetic materials, he said, and must be made so they can be turned into sugar and eaten. The mainstay of man's diet, he

told the North Jersey Section of the American Chemical Society, would be trees.

He suggested they could be made digestible by converting the cellulose in them into sugars.

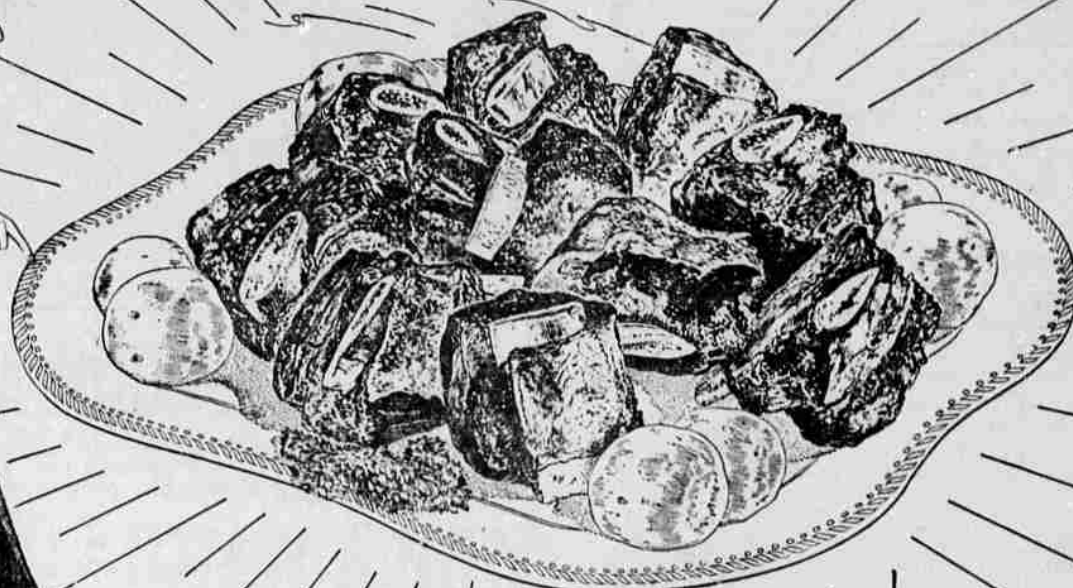
Prof. Rochow has a name — geochemistry — for the science that can turn us away from our present "suicidal trend."

BOY CUTS CHIN

Eric Ross, first grader, fell off the Glendale School's merry-go-round Thursday and had to have three stitches taken in his chin.

By Popular Request . . .

We REPEAT this RED HOT SPECIAL!



**BEEF
SHORT
RIBS**

ONLY **19¢** LB.

CUT FROM THE SAME QUALITY BEEF
AS OUR BEST T-BONE STEAKS!

Here's Some More Real Values in Our Meat Section!

Fresh-Lean PORK SPARERIBS LB. 45¢	GROUND BEEF 45¢ Ground fresh daily lb.	FANCY HAMS 55¢ Sugar cured lb.	SIRLOIN STEAKS lb. 69¢
	PORK SAUSAGE 49¢ Country style lb.	BACON JOWLS 25¢ Bean pot delight lb.	
	LINK SAUSAGES 59¢ Pure lean pork lb.	SLICED BACON 59¢ Fancy, lean lb.	
	PORK ROAST 45¢ Meaty shoulder cut lb.	PIECE BACON 49¢ Cudahy's Puritan lb.	
	PORK STEAKS 49¢ Tender—meaty lb.	FANCY FRYERS 65¢ Ready for the pan lb.	

GARDEN-FRESH PRODUCE

Enjoy these flavorful spring varieties now. Every item is carefully selected by our expert buyers!

RED RADISHES } Heap a bowl
on the dinner
table tonight
GREEN ONIONS } Large bunch **5¢**

Sweet PEAS
TOMATOES

Gardenside Brand No. 2 Can **10¢**
Grown in the Northwest

Westvale Brand No. 2 1/2 Can **15¢**
New, Solid Pack

Canned Food Values

Fancy Peas Sugar Balls No. 303 can	16¢
New Potatoes Del Monte No. 2 can	15¢
Spinach Emerald Bay No. 2 1/2 can	19¢
Spaghetti Boy-Ar-Dee (With Meat Balls) can	21¢
Tuna Fish Biltmore, seasoned, 1/2 can	35¢
Celery Soup Campbell's 10 1/2-oz. can	14¢

Coffee Savings

Nob Hill Coffee 1-lb. bag	47¢	2-lb.	93¢
Airway Coffee 1-lb. bag	45¢	2-lb.	89¢
Edwards Coffee 1-lb. can	51¢	4-lb.	2.01

Swift's

PREM

With beef added

12-oz. Can 39¢

**HOT
SAUCE**

Gardenside

4 tins 19¢

At Random Values

Graham Crackers Pirates' Gold 2-lb. pkg.	49¢
Enriched Flour Harvest Blossom 25-lb. sack	\$1.69
Tillamook Cheese De-Rind lb.	65¢
Candy Bars Baby Ruth 6 for 25¢ box	98¢
Butter Fingers 6 for 25¢ box	98¢
Air Wick Kills unpleasant odors bot.	69¢
Red Polish Old English 24-oz.	25¢

ROYAL SATIN 3-lb. Can	SHORTENING 83¢
CRISCO—Famous 3-lb. Can	SHORTENING 89¢
HALEY'S 16-oz. Can	MEAT BALLS 39¢

WELCH'S Peach or Apricot Preserves 1-lb. Jar	27¢
PLAYFAIR—Popular	Dog Food 3 cans 23¢
DUZ—Granulated SOAP 20 1/2-oz. pkg.	29¢

PAR-GRANULATED Large Size	Improved Soap 53¢
WHITE KING SOAP Granulated Reg. pkg.	29¢
LUX TOILET SOAP Bath size 2 bars	25¢
	Reg. 3 for 25¢

Prices in this ad effective thru Saturday. We reserve the right to limit

Be sure...shop
SAFEWAY