

The American mandrake is known as May apple, wild lemon, umbrella plant and, scientifically, as podophyllum.

Loans on Homes FOR LESS
Repay at any time without penalty
UMPQUA SAVINGS AND LOAN ASSN.

Gray Ladies Now In 30th Year Of Hospital Service

By JANE EADS
WASHINGTON—Patients who came from the battlefields of the first World War to Walter Reed Hospital dubbed the volunteer Red Cross workers 'Gray Ladies' because they wore gray dresses and gray veils.
The name stuck. This month the organization of Gray Ladies is thirty years old. It has grown into an organization numbering more than 25,000 members who contribute their time and services

Senior Sapphire



This is the world's largest known sapphire, 733 carats of velvety stone valued at \$300,000. It's the Black Star Sapphire of Queensland. The gem, shown by Lisa Prokoff, is on display at a New York jewelry store.

Fund Given to Test Smut-Resistant Varieties of Wheat

PENDLETON, Ore., May 11—(AP)—Oregon's Wheat Commission has allotted \$5000 to test new smut-resistant varieties of wheat.
Smut in Northwest wheat has increased from 2.8 per cent in 1942 to about 14 per cent last year, Administrator E. J. Bell reported.
The commission money will be used to hire an additional chemist for the new western wheat quality laboratory at Pullman, Wash. He will test milling and baking qualities of new smut-resistant varieties developed at Pendleton and Moro, Ore., and other Northwest experiment stations, Bell said.
Much of the smut increase in wheat was found in Alice, Elgin and Golden varieties, he reported. All of these have good baking and milling qualities.
Little smut was found in Rex.

This high-yielding variety is popular with producers but it is difficult to mill. Millers report it does not sift well and its quality is not uniform.
Some of the new crosses are smut-resistant. Plant breeders hope baking and milling tests in the Pullman laboratory will hasten development of an "ideal" wheat for producers, bakers and millers alike, Bell said.
The laboratory, under direction of Dr. Mark A. Barmore, started operations in April. Its job is to test new varieties of wheat developed in Oregon, Washington and Idaho. It also will try to improve present testing methods and develop new and faster ones.
Bell said that so far only money for the laboratory had been provided by Washington State College and the U. S. Bureau of Plant Industry. However, they did not have enough money to meet demands of the region, he said.
Idaho and Washington wheat farmers were expected to contribute to the project also, he said.



For information about "TWINWAY" call
CONSOLIDATED FREIGHTWAYS

Child care is not part of our job; but the care with which the men of our "TWINWAY" Home-to-Home Moving Service handle your possessions will truly impress you. They enjoy doing the kind of job you'll admire.

Our Home-to-Home Moving Service gives you a choice of two fine ways of moving your possessions—one of which is certain to meet your special needs. We are also agents for North American Van Lines.

221 Spruce St. Phone 31

NOW WORLD'S SMALLEST HEARING AID!

ACTUAL SIZE
Place your present aid on top of photo to the right and SEE how much extra weight you are carrying now!



SO SMALL... it slips into watch pocket!

THIS IS ALL YOU WEAR!

THE MAGIC SILVER CIRCUIT!

Based on a great war-discovered secret! Reduces servicing to a minimum. Resists humidity and body perspiration even during the hottest and most sultry summer days.

BELTONE HEARING SERVICE
8 S. MICHIGAN AVE. • DEPT. 1648 • CHICAGO 3, ILLINOIS

FREE CLINIC

FRIDAY — MAY 14
UMPQUA HOTEL

Ask for Mr. Mitchell

In 851 hospitals throughout the United States.

The expansion of the Gray Ladies has not been confined to Federal hospitals. More and more community institutions are finding Gray Ladies' services of value. An outstanding phase of their work today is with crippled and hospitalized children.

Every year more than 1,000,000 children are admitted to hospitals in this country. Hospital officials estimate that 40 per cent of the child patient's day is taken up with physical care, leaving 60 per cent of his time free.

Red Cross volunteers know that each child in a hospital ward must be kept calm and quiet. They also know that play, intelligently directed, can serve as preventive medicine. It directs the child's attention from himself and his ills to new creative ideas.

In Baltimore, Gray Ladies are serving at the Children's Hospital School. Ten little patients are completely encased in "iron lungs." Gray Ladies feed them—it takes an hour for each one. They read to them, cheer them, ease the demanding tasks of the nurses. Gray Ladies help children with their school lessons in treat-

pital wards in DeKalb County, Ga. When a child leaves the hospital, a letter is written to the teacher, telling her what has been done and the progress she has made. Gray Ladies are giving doctors and nurses a hand, checking the eyesight of children in Georgia schools.

Child patients in New York's Bellevue Hospital play musical games and join in group sing-alongs and join in group singing. Adolescent boys in the psychopathic wards look forward to weekly movies shown by the volunteers. Gray Ladies are teaching leather tooling, oven clay modeling, spatter painting, typing, music and sewing to young patients in the Lillian Taylor School for physically handicapped children in Galesburg, Ill. In the clinic admitting room of Children's Memorial Hospital in Chicago, Gray Ladies help nervous youngsters overcome their fears by producing toys, mechanical animals and picture books to divert their attention.

'NUF'S ENUF
LACONIA, N. H., May 13—(AP) The staff and inmates of the Laconia state school never want to see a smelt again.

They have been on a steady diet of the fish since last week-end when municipal court gave the school 700 pounds of smelt seized from poachers.

The staff and inmates finally hollered quits yesterday.

PORTLAND, OREGON
ST. FRANCIS HOTEL
S. W. 11th at Main Sts.
Write for Reservations Please
HOTEL ROOM FAMILY SPECIAL
(Man, wife & two children room & bath, two double beds)
\$5.00 per day per room
Without bath \$4.00 per day

WILL OSBORNE and His Famous ORCHESTRA

Famous in Radio, Records and Movies at

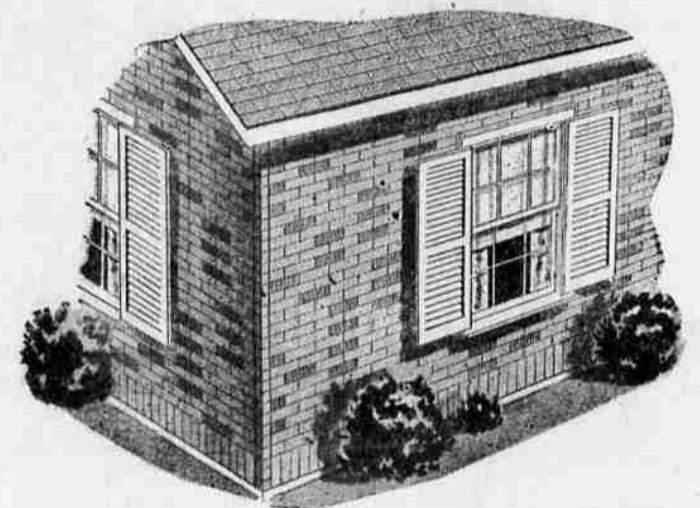


KENNEDY'S DUTCH MILL
ONE NIGHT ONLY, THUR., MAY 13

There will be no bar in the part of the building where Will Osborne will play for dancing, so the entire family may attend. Teen-agers especially welcome!

ADMISSIONS—\$1.50 per person, inc. tax

Montgomery Ward Lasting Protection and Beauty



THREE TAB ASPHALT SHINGLES

Wards finest! Colorful, ceramic-surfaced asphalt. Choice of colors. Buy today!

Per Square (covers 100 sq. ft.) 8.98

WARDS ROLL ROOFING

Ceramic-surfaced, 90 lbs. Colors red blend and green blend.

Per Roll (covers 100 sq. ft.) 3.75

Buy Now—Pay Later Through Wards Monthly Payment Plan

SEND THIS COUPON IN TODAY!

MONTGOMERY WARD & CO.
Building Materials Dept.
I would like more information about:
 ROOFING INSULATION
NAME.....
ADDRESS.....
CITY & STATE.....

IT'S *Herman's* FOR CURRIN LOGGER'S

In line with our policy to bring our customers the best in nationally advertised lines . . . We feel that Currin Loggers cannot be beat for wear or fit . . . The materials and workmanship are guaranteed.

Styles Now In Stock . . .

- Lace to Toe, with Block Heel
- Plain Toe, with Block Heel
- Plain Toe, with Spring Heel

All Styles Priced at . . .

\$ 29⁹⁵

234 N. Jackson *Herman's* Phone 217
* THERE IS NO SUBSTITUTE FOR QUALITY *
FORMERLY WILDER'S

Make BEER Your Beverage!

BLITZ-WEINHARD

Your Brand!

Blitz-Weinhard's fame, like its golden color, shines through the years. For warmhearted friendliness serve Blitz-Weinhard... the beer discriminating men and women have enjoyed for more than 90 years. Its consistent goodness and its unvarying quality make it the Northwest's favorite beer. ALWAYS IN GOOD TASTE!

Blitz-Weinhard

Seldom equalled. never excelled

Distributed by: Douglas Distributing Co., Roseburg

