

Russia Spoils Good Effect Of Crash Apology

By De WITT MacKENZIE
(P) Foreign Affairs Analyst
Russia's quick apology for the Soviet-British plane disaster Monday in Germany created hope that this might signal a general easing of the dangerous tension which developed recently between the Soviet and the Western allies in that zone, but this hope has now been largely dissipated.

The Russians today blamed the British for the collision between the Soviet fighter plane and the passenger ship, with the loss of 15 lives. The bolsheviks charged that the British pilot violated regulations by flying over the Soviet traffic zone. The British retorted that the Russian story was palpably untrue.

The Soviet authorities not only had apologized but had promised that hereafter allied planes would have unhindered access to Berlin. As a result, British Foreign Secretary Bevin, while pressing for immediate investigation of the disaster, felt able to tell the

House of Commons regarding the general east-west dispute in Germany:

"If there is goodwill, it is capable of solution."

Mr. Bevin was smart to put in that qualifying "if".

Sample Of Red Tactics

The Russians are treating the crash as an accident, and while that exact characterization might be questioned, the allies haven't quibbled over the term. It appears from the testimony of eye-witnesses for the allies that the pilot of the Red fighter plane was trying to harass the transport by diving at it. However, it would be absurd to claim that he deliberately sacrificed his own life in order to destroy the British plane with 12 Britons and 2 Americans aboard. He just wasn't smart enough as a pilot to do the trick of "buzzing" which the witnesses say he undertook.

If we accept the version of these witnesses, we have here a typical example of bolshevik tactics for all occasions. The Communist philosophy of life is wrapped up in iron-arm methods, as witness the manner in which they have taken over the small countries of eastern Europe. Political success is achieved by the use of force, terrorism and purges. Even in ordinary debates they don't waste time with attempts at persuasion but resort to bullying and obstruction, as witness their operations in the United Nations.

In the light of all this, the Russian apology for the Berlin "collision" was a striking deviation from their usual behavior.

But now the Russians having perhaps saved a grave development by quick apology for the plane crash, apparently are reverting to their old tactics.

Faults In Making Dresses At Home Told by Specialist

Professional appearance in garments sewed at home is the goal of all homemakers but too frequently the finished product displays an obvious "fireside touch," states Miss Lucy Lane, O. S. C., extension specialist in clothing and textiles.

The "fireside touch," Miss Lane explains, is an expression some professional clothing makers use to describe incorrectly made garments. With current interest in home sewing at an all time high, Miss Lane says many non-professionals can profit from clothing trade secrets which give finished garments the desired professional appearance.

A common dressmaking error is cutting cloth so the grain does not fall perpendicular to the floor. Frequently, this is the result of attempting to cut material on round or narrow surfaces where the fabric will not lie flat. Another hurdle to overcome is that of stretching fabric while the garment is being constructed. Miss Lane says professionals use machine stitched "staylines" or

the two boys—Wallace, 16, and Sammie Lee, 14. Counsel for the Ingrams said it had not been decided whether to appeal to the Georgia Supreme Court. The Ingrams would become eligible for parole after serving seven years.

reinforcing lines around necklines, armeyes, shoulders waistlines and plackets. Staylines are sewed prior to assembling the garment, and they are placed just inside the seam line.

Overhanding, the clothing specialist says, is frequently the reason that garments have a worn appearance before they are completed. Finish all details on each separate part of a dress, she suggests, before joining.

Pressing is best done as the garment progresses. Blouses and skirt seams pressed separately before joining the waistline will insure a better fit. Pressing if done with the grain prevents undue stretching.

Staylines are always stitched with the grain of the material. Miss Lane finds beginning sewers often start on difficult patterns, then become discouraged with their results. Start on simple patterns, she advises, then work gradually into the more difficult garments.

MEN'S
SOX Doz. 69c
TRADER GILKEY

CAULKED BOOTS
Sizes 5 - 11
14.95
TRADER GILKEY

Tax Dodging No. 1 Racket in America, Official Reveals

WASHINGTON—(AP)—Income tax dodging is a billion dollar a year racket in the United States, Undersecretary of the Treasury A. L. M. Wiggins says.

"It is the number one racket in America," Wiggins told a Senate appropriation subcommittee. Wiggins said American taxpayers are evading taxes at the rate of "no less than \$1,000,000,000 a year" and that there are about \$5,000,000,000 outstanding in unpaid taxes.

"I am utterly amazed at the

tax evasion that is going on, Wiggins said.

In one city, he said, treasury agents took five names from one professional group.

"They pulled out the income tax returns of these five," said Wiggins, "and they found that all five were stealing from the United States government."

In another check where evasions were suspected, Wiggins said three cases were investigated. The first showed one man paid \$40,000 over a four-year period when he should have paid \$240,000.

"Indications are the other two cases involved even bigger money," he said.

The bureau of revenue has about 1,000 investigators, not enough men to handle the problem, Wiggins said.

Oregon State College Suspends 138 Students

CORVALLIS—(AP)—Scholastic troubles brought suspension for 138 Oregon State College students at the end of the winter term, E. B. Lenson, dean of administration reported. He said the number was about average for the total enrollment. An additional 403 students were placed on probation because of grade averages below C.

WOULD YOU LIKE TO SEE WITHOUT GLASSES?

Lois N. Cassel
Teacher
The Dr. Bates Method of Eye Education
Interview by Appointment Only
Phone 1019-R

You Can't Pump Water From a Dry Well

You can't gain increased production and larger profits with old, inconvenient, run-down farm buildings... Modernize your farm!... Build those new buildings... Remodel those old buildings... Do it today... Without cash... our way, in a few minutes, without any fuss, bother and red tape... Let the Coen Lumber Company show you how you can build a new barn... hog house... tool shed... or modernize your present milkhouse and granaries... Good working farm buildings quickly pay for themselves by cutting feed costs...

increasing livestock and poultry production making all your farm work more convenient... start that building now... Pay for it later by monthly or seasonal installments. With your contract you receive free insurance... all remaining payments on no further payments are required by the survivor or estate. Valuable protection and it costs nothing extra. The Budget Payment Plan and Protection Plan, available now at the Coen Lumber Company makes all this possible.

COEN LUMBER COMPANY
Flood & Mill Ph. 121

\$100 a Month for Life



The Golden Years Plan gives you insurance protection now and a monthly income for life when you retire. Details will be gladly explained by any Standard Insurance representative.

STANDARD INSURANCE COMPANY
G. K. QUINE
115 Cass St.
Phone 108 — Roseburg

Negro Woman, Two Sons Escape Death Penalty

AMERICUS, Ga., April 8.—(AP)—Death sentences imposed on a 40-year-old Negro woman and her two teen-age sons for the slaying of a white share-cropper have been commuted to life imprisonment.

Judge William M. Harper of Southwestern Superior Court ruled Tuesday that Rosa Lee Ingram and her sons were convicted on circumstantial evidence and that under Georgia law he thus was permitted to set aside the death penalty.

National attention was attracted to the case by the youth of



SPRING PRODUCE

The springtime produce parade has begun at Safeway. Each day finds new varieties of your favorite spring fruits and vegetables arriving at the store... picked at the point of perfection and rushed to you at their finest.

Watch your meals take on new color, new zest, when you include generous servings of these garden-fresh, vitamin-packed fruits and vegetables. They're lovely to look at... delicious to eat. And Safeway's low prices enable you to enjoy them today and every day. Why not add a touch of Spring to tonight's menu?

Safeway has the Low Prices. Be Sure... Shop Safeway

Baking Needs, Etc.

- Shortening Royal Satin 1-lb. 39c 3-lb. \$1.09
- Shortening Fluff 1-lb. 39c 3-lb. \$1.10
- Crisco Shortening 3-lb. can \$1.15
- Pancake Flour Suzanne 3 1/2-lb. pkg. 42c
- Flour Kitchen Craft 5-lb. 49c 10-lb. 93c
- Cake & Pastry Flour Sperry 10-lb. 83c

Dromedary 5c Sale

New Devil's Food Mix — Now Only 5c
With Gingerbread Mix at Regular Price
BOTH ONLY 32c

Canned Foods

- Apple Sauce Highway No. 2 can 12c
- Kadota Figs Sundown No. 300 can 19c
- Grapefruit Highway—Broken Segments 2's 15c
- Beans Rosedale, Green & White Limas No. 2's 25c
- Whole Beets U-Gene-Ruby No. 2 can 19c
- Corn Highway, Vacuum Packed 12-oz. can 18c
- Corn Butter, Kernel—Whole Kernel No. 2's 21c
- Peas Gardenside—Standard No. 303 can 10c
- Pork & Beans Dennison's No. 1 can 11c
- Beans With Chili, Riviera No. 303 jar 14c
- Chicken Fricassee Lynden 29-oz. can 83c
- Meat Balls Haley's 16-oz. can 39c
- Vegetable Stew Beef, Haley No. 2 1/2's 39c
- Corned Beef Hash Libby No. 202 can 32c
- Spam Lunch Meat Hormel 12-oz. can 49c
- Tem Luncheon Meat 12-oz. can 45c
- Shrimp My-T-Good, Wet Pack 5-oz. can 49c

Condiments, Soups, Etc.

- Tomato Catsup Red Hill Bottle 19c
- Tomato Ketchup Heinz Bottle 27c
- Tomato Sauce Gardenside Can 6c
- Ripe Olives Ebony—Medium 4 1/2-oz. 15c
- Mazola Oil Pint 45c Quart 88c
- Tomato Soup Rancho 22-oz. can 15c
- Pea Soup Dennison No. 1 can 12c
- Noodle Soup Mix Lipson 3 pkg. 32c

Household Needs

- Lux Toilet Soap 2 bars 21c
- Lux Flakes 5-oz. pkg. 15c 12 1/2-oz. 37c
- Supurb Soap Granulated 24-oz. pkg. 35c
- Vel Soap Powder 12-oz. pkg. 33c
- Laborlite Cleaner 16-oz. pkg. 25c
- Spic & Span Cleaner 16-oz. pkg. 25c
- Bleach White Magic Quart 11c 1/2-gal. 19c
- Bleach Perex Quart 15c 1/2-gal. 27c
- Soil Off Cleaner Quart 49c
- Window Cleaner Windex 8-oz. bot. 2/25

Miscellaneous Values

- Peanut Butter Real Roast 1-lb. 29c; 2-lb. 55c
- Peanut Butter Beverly 1-lb. 37c 2-lb. 69c
- Peanut Butter Slippy 1-lb. jar 39c
- Sleepy Hollow Syrup 12-oz. bottle 24c
- Breeze Cheese 1/2-lb. pkg. 33c
- American Cheese Dutch Mill 1/2-lb. pkg. 34c
- Junket Desserts All Flavors Pkt. 11c
- Candy Bars Milky Way, Secker, Ping. 6/25c

Green Onions

Garden-fresh
Mild Flavored **LB. 26c**

Asparagus

U. S. No. 1 Grade
Tender Shoots **LB. 19c**

Radishes

Fresh as dew
Bright Red **LB. 18c**

ARTICHOKES Bright Green—Solid 1b. 13c CUCUMBERS Hothouse—Grown Locally 1b. 29c

- Grapefruit, Texas Ruby Red lb. 7c
- Peppers, Green Bell lb. 19c
- Navel Oranges, Seedless 7-lb. bag 59c
- Potatoes, U. S. No. 1 'A' Size lb. 11 1/2c
- Cauliflower, Local Crop lb. 14c
- Broccoli lb. 20c
- Rome Apples box 1.69
- Spinach 10-oz. cello pkg. 17c
- Fancy Ripe Tomatoes 14-oz. tube 32c

HOMINY

Benjo brand
White or Golden No. 2 1/2 Can **15c**

Grapefruit Juice

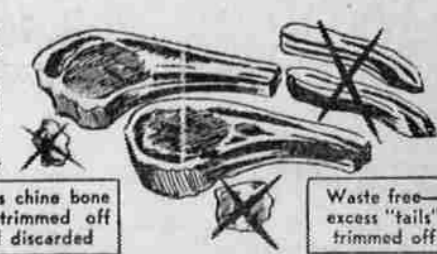
Town House
Natural or Sweetened 46-oz. Can **21c**

PEACHES

World Wide No. 2 1/2 brand Can **21c**

SAFEWAY MEATS ARE TRIMMED BEFORE WEIGHING... So you Save Money!

When you compare meat prices, remember Safeway prices always are based on the trimmed cuts, free of excess bone, waste and fat, ready for cooking. We'll give you twice as many rib lamb chops without cost if you ever buy them not trimmed this way:



Excess chine bone tips trimmed off and discarded

Waste free—excess "tails" trimmed off

Rib Lamb Chops Trimmed Waste-Free Top Quality Lamb **1b. 65c**

- Leg o' Lamb Roast 1b. 65c
- Lamb Shoulder Roast 1b. 55c
- Breast of Lamb Stew 1b. 25c
- Sirloin Beef Steaks 1b. 75c
- Beef Chuck Roasts 1b. 49c
- Fresh Ground Beef 1b. 45c
- Pork Loin Roast Rib End 1b. 59c
- BACON By the Piece, Special 1b. 55c
- FRYERS Eviscerated—Disjointed 1b. 79c
- FOWL Eviscerated—Disjointed 1b. 65c
- Chinook Salmon Steaks 1b. 69c
- Halibut Steaks Short Ribs 1b. 59c

Prices in this ad are effective through Saturday, April 10.

We reserve the right to limit quantities. No sales to dealers.

COFFEE as you like it

EDWARDS COFFEE
1-lb. 47c 2-lb. 93c 4-lb. \$1.85

Maxwell House Coffee 1-lb. 49c
M. J. B. or Hills Coffee 1b. 49c
Golden West Coffee 1b. 49c
Sanka Coffee 1-lb. can 59c
Instant Coffee Borden 2 1/2-oz. 41c
Instant Coffee Nescafe 4-oz. 39c

AIRWAY COFFEE
1-lb. bag 40c
3-lb. bag \$119

NOB HILL COFFEE
1-lb. bag 42c
2-lb. bag 83c

BLACK TEA CANTERBURY TEA 1/2-lb. 57c 48-bag pkg. 45c
LIPTON'S TEA 1/2-lb. 65c 48-bag pkg. 53c

Everybody likes Hills Bros Coffee!

Smooth blend of the finest coffees grown, Hills Bros. Coffee satisfies every taste.

There's matchless goodness in every cup you make. Uniform flavor is assured by CONTROLLED ROASTING, the exclusive Hills Bros. process which roasts every coffee bean evenly.

Vacuum-packing in cans and Ultra-Vac jars keeps Hills Bros. Coffee temptingly fresh.

HILLS BROS COFFEE
TWO GRINDS:
Drip and Glass-Maker Grind
Regular Grind

Be sure... shop **SAFEWAY**