

### Bob Elliott, 3rd Sacker of Braves, Voted Top Player

By JOE REICHLER  
NEW YORK, Nov. 21.—(AP)—Bob Elliott, heavy hitting third baseman of the Boston Braves, yesterday was proclaimed the National League's most valuable player for 1947 by a vote of a 24-man committee of the Baseball Writers' Association.

to win the title since its inception in 1911.

The 31-year-old native of San Francisco, whose great work both at bat and in the field was largely responsible for Boston's third-place finish last season, is only the second Brave thus honored. The other was Johnny Evers, of Tinker-to-Evers-to-Chance fame back in 1914.

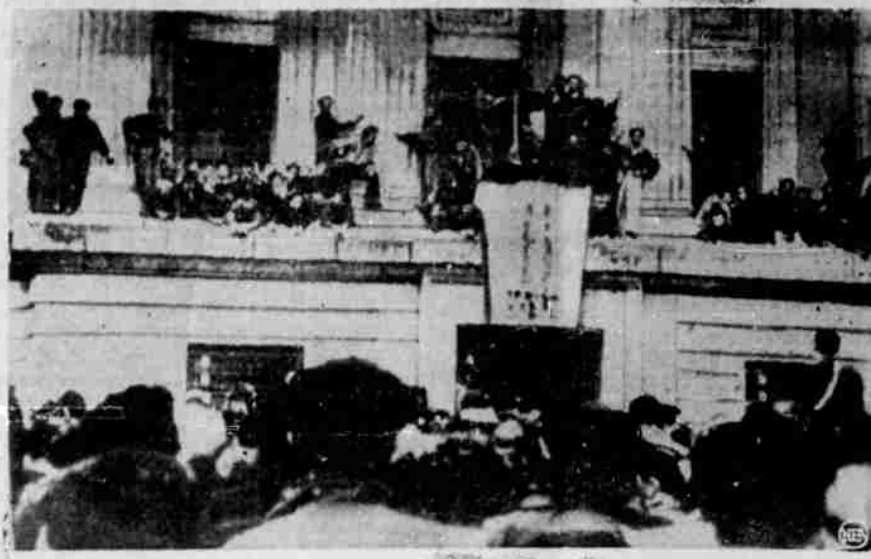
Elliott, a converted outfielder who made the shift to the hot corner in 1942, polled a total of 255 votes in the balloting for the Kenesaw Mountain Landis Memorial award to win by a comfortable margin over Ewell Blackwell, righthanded Cincinnati ace pitcher of no-run, no-hit fame, who had 175 points.

Johnny Mize, slugging first baseman of the New York Giants, was third with 144 and catcher Bruce Edwards led a sizeable delegation of champion Brooklyn Dodgers with 140 points.

Stan Musial of the Cardinals who breezed in an easy winner in the 1946 poll, could do no better than 20th with only 29 votes. He did not get any votes above seventh. Elliott last year received only one vote to just get in under "honorable mention."

Depletion of mineral resources in the United States include the working out of such mineral areas as the Comstock Lode, the mines around Tombstone, Arizona, and the Lake Superior copper region as well as oil fields in Pennsylvania, Ohio Texas and California.

### Communists Riot in Marseille



Communists swarm over the Marseille, France, Palace of Justice in demonstration while four of their members were on trial inside for instigating similar activities. Shortly afterwards Communists seized the City Hall and beat the new De Gaullet mayor. Further Communist disorders were reported in Italy as well as France.

### Tax Easing Sought To Get Farmers To Release Wheat

WASHINGTON, Nov. 19.—(AP) Farmer Cooperative marketing associations were reported today to be seeking government approval of a plan designed to induce farmers to turn loose wheat they are now holding off the market.

Farmer resistance to releasing the wheat now is based on (1) the wish to avoid adding to income tax liability for this year and (2) hope that prices will go higher later.

One government official said the plan advanced by the co-ops calls for:

1. Farmers to turn over their wheat to co-ops in return for a certificate calling for payment next year.
2. The co-ops to sell the wheat and invest the proceeds in wheat futures—contracts calling for delivery at specified future date—for which the co-ops would get money next year to reimburse the farmers.

Current and future wheat prices are pretty close together at about \$3 a bushel. If prices were higher when deliveries were due under the futures contracts, the co-ops would get the benefit of the advance and pass it on to the farmers. The plan assumes that prices will not fall by delivery time.

Backers of the plan hope that the internal revenue bureau will rule that the deal counts on the farmer's 1948 instead of his 1947 income. This would keep him out of a higher tax bracket this year and give him the benefit of any tax reduction by congress on 1948 income.

The bureau has the question under consideration, but an official said no decision has been reached.

### Universe's End Seen in Millions of Years

WASHINGTON, — (AP) — The end of the universe through a gradual scattering of all matter through cold space is seen as a possibility by Harvard's famed astronomer, Dr. Harlow Shapley. But don't get excited.

His own system of planets hasn't even started to go into this cosmic spread-formation and

Smithsonian Institution, "through the operation of the laws of thermodynamics, the heat of the stars is going out into the coldness of space."  
"The universe is steadily approaching the heat-death—a coldness near absolute zero in an empty world."

**"BETTER HEALTH WITH BETTER CIRCULATION"**  
**MARTIN'S HEALTH CENTER**  
Are You NERVOUS and lie AWAKE NIGHTS—Just THINKING? Do You Have SORE or ACHING MUSCLES? THEN VISIT THE HEALTH CENTER  
Phone 858-R  
208 W. Douglas Roseburg, Ore.

**ROSEBURG ROD AND GUN CLUB**  
MEMBERSHIP MEETING  
KNIGHTS OF PYTHIAS HALL  
8 P. M.  
FRIDAY, NOVEMBER 21st

**IMPRESSIVE INCLEANATIONS!**  
ANNUAL DOG SHOW  
NO WONDER HE ALWAYS WINS FIRST PLACE, HE ALWAYS HAS HIS THINGS CLEANED AT —  
**UMPQUA CLEANERS**  
3 DAY SERVICE FREE PICKUP AND DELIVERY  
231 NORTH MAIN ST. TELEPHONE 472

**Wirth's Washerteer**  
Bendix Machines  
SERVE YOURSELF  
Wash 7 to 9 lbs. (dry) clothes in 30 minutes for only 40c. Soap Furnished. Bleach 5c extra.  
6 blocks north of Garden Valley Jet. on Highway 99.

**ANNOUNCING!**  
Radio Wave  
The Precision Permanent  
Startling New Development in Permanent Waving  
Let Us Show You Radio Wave  
**ILA'S BEAUTY SHOP**  
307 PACIFIC BUILDING PHONE 424

### Oregon and O. S. C. Gridders Drilling For Annual Clash

(By the Associated Press)  
Oregon and Oregon State football teams continued to cavort behind locked gates today as they carried out a program of light workouts to save all possible strength for Saturday's annual "civil war" clash at Eugene.

### Fires, Accidents Claim Eight Lives In Northwest

(By The Associated Press)  
The fatal burning of three little children at Wellpinit, Stevens County, tragically headed a list of eight Washington and British Columbia accidental deaths yesterday that also included another infant fire victim near Victoria and death of an 11-month-old Seattle girl of burns from a pan of scalding water.

### Communists Riot in Marseille

led by Ray Crane, veteran right guard and ace line backer. This will be the 51st meeting of the rival Oregon teams, the series dating back to 1894. Oregon has taken 25 wins and OSC 18, while seven have ended in ties.

**"SPEEDY"** by **Corkrum MOTORS**  
A TERRIBLE NIGHTMARE, BOB I DREAMT I WAS DRIVING ALL OVER TOWN LOOKING FOR A PARKING SPACE.  
NOTE SO BAD ABOUT THAT?  
THERE WERE FIFTY-FIVE FIRE PLUGS IN EVERY BLOCK—THAT'S ALL!  
CORKRUM MOTORS, INC.  
TO TAKE IT TO FOR REPAIRS—THEN YOU WOULD BE IN A FIX!  
**BRAKE RELINE SPECIAL**  
THIS MONTH ONLY — MATERIALS AND LABOR ONLY GUARANTEED MATERIALS USED **18.00**  
Phone 408 114 N. Rose

**"Just think—He goes Everywhere!"**  
**GREYHOUND**  
Yes, everywhere throughout the West and all America the running Greyhound dog is the symbol of convenient, dependable, low-cost transportation. Whether to the next town or across the continent, you can get where you want to go by Greyhound... because Greyhound gives more service to more places than any other travel system.  
**There Are No Lower Fares!**  
Sample money-saving fares from Roseburg  
Seattle ..... \$ 5.50  
Portland ..... 3.00  
Grants Pass ..... 1.20  
Redding ..... 4.05  
San Francisco ..... 6.90  
Los Angeles ..... 10.65  
R. J. Hughes, agent  
348 S. Stephens Phone 586  
AIR-CONDITIONED COACHES  
**GREYHOUND** SERVES ALL AMERICA ALONG 80,000 MILES OF HIGHWAY!

**IS YOUR CAR**  
**RUN DOWN AT THE WHEELS?**  
We have the latest designed Electronic Wheel **BALANCER**  
That detects cause of:  
Excessive tire wear  
Shimming and vibration  
Hard steering  
Dragging brakes  
Defective wheel bearings  
The Bean Wheel Aligner  
Checks camber of wheels  
Checks caster of wheels  
Checks toe-in of wheels  
Gives You Soft Easy Steering  
Makes Your Car Safe to Drive  
Checks kingpin inclination  
QUICK SERVICE  
**LOCKWOOD MOTORS**

**Swell for "stop-'n-shoppers"**  
**SHELL PREMIUM GASOLINE**  
helps make city driving smooth and sure  
In Shell Premium, you get more than high octane. You get performance qualities made available by Shell Research.  
For this is a gasoline of many different power components—a group selected, finely balanced and rigidly controlled by Shell scientists to give your engine exactly what it needs for today's driving.  
You can measure results in quick-starting and pickup... on steep, steady climbs... or along smooth, straightaway travel. Shell Premium is one of the research-engineered products that Shell Dealers have for your better driving everywhere.  
**YOU NEVER KNOW WHEN GUESTS WILL CALL**  
But, lady, I do. Company's coming here all day, every day. So my place has to be kept up-to-the-minute clean.  
Grease rack, driveways, windows, tools and equipment—they take a lot of polishing and shining. But you can see they get it.  
And restrooms get extra special care 'cause they're what folks notice most. It's a service that's appreciated. And service is my business.  
**SHELL**