



BOWLING

Table with columns for Team Standings, W. L., and individual player scores for various bowling teams like Umpqua Chiefs, Monarch, and Industrial League.

Table listing names and scores for 'Sherman's Shoes', 'Blessing's', and 'Freadman'.

Two Women Die in Bus Overturn Near Azalea

(Continued from page 1) ...trapped passengers. Five, however, could not be immediately reached.

Wreckage Plins Four. Miss Prevo and Mr. Robinson were extricated after about an hour of work and were rushed to the hospital at Roseburg.

Officers at Scene. State policemen, directed by Sergeant Paul Morgan, worked all night in the investigation of the wreck, clearing traffic and checking the list of 18 passengers.

Ikkes Scores Clamor Against Jap Evacuees (Continued from page 1) ...department of the interior. "The War Relocation authority was given an unenviable job," Ikkes said.

Bombs Shatter German Plants in 4 Countries

(Continued from page 1) ...invasion coast. The Americans alone in the five days ended Wednesday shot down 417 German planes, losing 151 bombers and 59 fighters.

Buy War Bonds TODAY For Future Needs

If News-Review carrier fails to deliver your paper Please Call 215-L between 6:00 and 7:00 P. M.

day, 26 by those from Britain and 31 by others from Italy which hammered aircraft plants near Vienna and struck Zagreb and Split in the Balkans.

Seattle Defeats Stars, Beavers Trounce Seals

(By The Associated Press) The Seattle Rainiers of the Coast Baseball league last night defeated the Hollywood Stars with a barrage of 14 bingles that netted them 9 runs while the losers were tallying three.

The way of their errors was a major factor in the downfall of the San Francisco Seals last night as the Portland Beavers won, 7 to 3, to lead the series three games to one.

The San Diego Padres blanked Oakland last night, 13 to 0, amassing 15 hits against their guests. The Los Angeles Angels and Sacramento Senators were idle again last night because of rain.

Sutherland. SUTHERLIN — Mr. Daubenspeck, who built a new house on Fifth avenue, has completed it enough so that he has moved his family there.

Japanese Extend Siege Lines Near Imphal Base (Continued from page 1) ...portant Japanese base.

Chinese in the Mogaung valley advanced from Tingring, 18 miles from north of Kamalng, and took Pumsin, 25 miles to the northwest in the hills flanking the valley.

ALLIED HEADQUARTERS, Southwest Pacific, April 13 — (AP)—General MacArthur ap-

Reds Smash Forward To Savastopol Port

(Continued from page 1) toward Feodosiya and were reported to be less than 15 miles from that important evacuation port, already under bombardment by planes of the Black Sea fleet.

Other soviet warplanes were blasting objectives in front of the advancing ground forces, including what the army newspaper Red Star's correspondent called "caravans of enemy ships" apparently heading for Romanian ports across the Black Sea.

Skala Trap Tightened. On the mainland to the north, other Russian armies yesterday captured both Tiraspol, 53 miles northwest of Odessa, and Falticeni, 60 miles south of Cernauti and 170 miles north of the valuable Ploesti oil fields, a Russian communique announced.

At the same time red army troops drew tighter the noose around the Skala pocket north of the middle Dniester river, where the remnants of 15 German divisions—possibly 10,000 men—faced annihilation.

The twin Russian drive through the Crimea, which dispatches said was crumbling axis defense lines in all directions, was materially aided by the soviet Black Sea fleet air force, which was blasting enemy evacuation ports and communication lines with devastating results.

Constanta, big Romanian Black sea port and oil shipping center, also was heavily bombed, Moscow said. Constanta is 230 miles across the Black Sea from Sevastopol, and presumably would be one of the logical ports of debarkation for axis troops evacuated from the Crimea.

Japanese Extend Siege Lines Near Imphal Base (Continued from page 1) ...portant Japanese base.

Chinese in the Mogaung valley advanced from Tingring, 18 miles from north of Kamalng, and took Pumsin, 25 miles to the northwest in the hills flanking the valley.

ALLIED HEADQUARTERS, Southwest Pacific, April 13 — (AP)—General MacArthur ap-

pears to be putting the finger on Hansa bay, New Guinea.

Within the past few days, 830 tons have been expended on the enemy base, which is slightly more than 100 miles up the coast from the nearest allied ground position on the approaches to Madang, Hansa bay, in addition to being blasted by all types of bombers this month and bombarded by the destroyers, also has been shelled by speedy patrol boats.

Today's communique added a new bomber target, the atoll of Nomol in the Carolines, southeast of Truk.

M'Arthur Sounds Warning Anent Presidency Boom

(Continued from page 1) with 23, Florida with 15 and others cast their ballots. He picked

up two in a Virginia district meeting yesterday.

Connecticut republicans, meeting today to start the selection of 16 delegates, may also favor him, if the estimate of Senator Danaher (R-Conn.) is correct. Maine republicans, also meeting today, may give him some of their 13.

Stassen had 33 tightly pledged delegates, with none claimed, but his backers said he probably would pick up some in New England. They also expected results elsewhere from the broadening of his campaign.

The strength of MacArthur, with three Wisconsin votes to his credit, was more of an unknown quantity.

Oregon's 15-member delegation to the republican convention will be pledged to the candidate receiving the most write-in votes at the May 19 primary.

Willkie's withdrawal came just

a few hours before the certified list of candidates was sent to Oregon's 36 county clerks. The clerks use this list in printing the election ballots.

The certified list has been printed, but Willkie's name will be scratched off by pencil.

N. Y. Demos For Roosevelt. A fourth-term endorsement by the New York state democratic committee yesterday demonstrated anew the party's demand that Mr. Roosevelt again be a candidate. Mr. Roosevelt was assured the support of nearly all of the 96 New York delegates, 50 elected in the Illinois primary and 12 chosen in the Nebraska primary.

New York democrats unanimously reelected Chairman James A. Farley, who has told friends he is opposed to a fourth term, but national committee leaders had worked for this result to avoid a threatened split

in the ranks there. Farley will be a convention delegate.

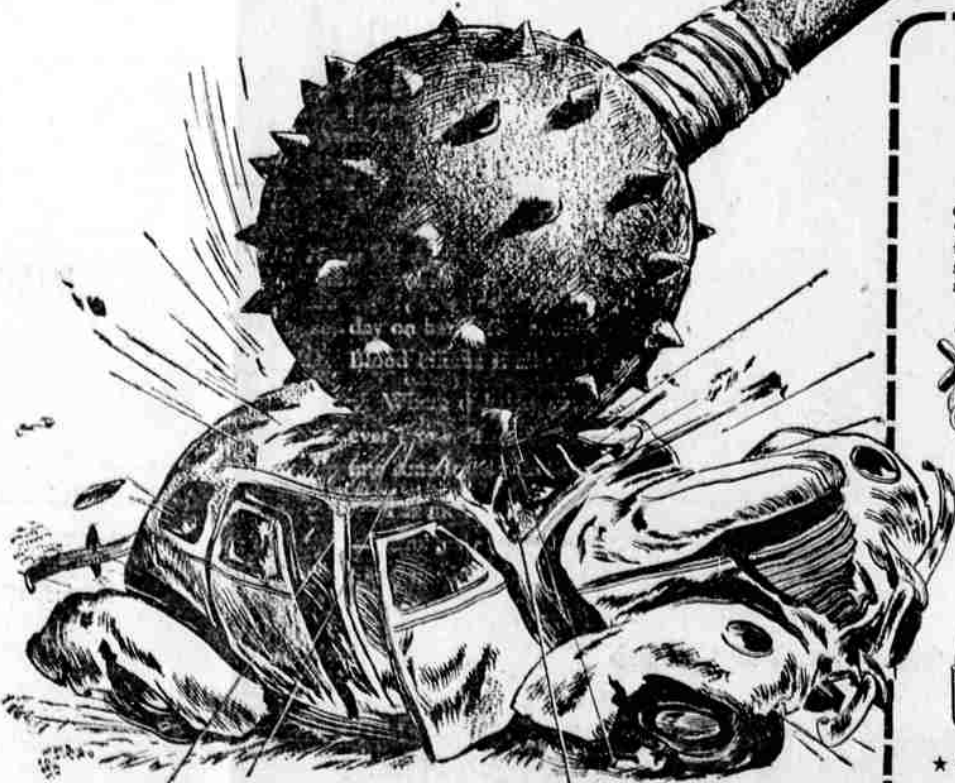
Advertisement for Radionic Hearing Aid, featuring 'ZENITH' brand and 'SICKS' SELECT BEER' logo.

Large advertisement for SICKS' SELECT BEER, featuring a bottle, a glass, and the slogan 'A Little Apart'.

Is Wartime Stop and Go Pounding Your Car to Junk?

SHELLUBRICATION CAN HELP IT OUTLAST THE DURATION

Will your car outlast the duration? Or will it join the big parade of 5000 cars going to junk yards every day because of neglect? Wartime Stop and Go is hard on your car. Unless you guard against neglect now, burned out bearings, scored pistons, a ruined transmission or differential can result.



Watch out for Wartime Stop and Go damage to these:

- CHASSIS — Lubrication points "gum up," get stiff. Shelllubrication protects them. Also checks spark plugs, lights, tires, battery and cleans all windows.
ENGINE — Unexploded fuel can weaken. And short trips mean a cooler engine... unevaporated moisture... no sludge forms. Play safe with fresh Golden Shell Motor Oil.
TIRES — Under-inflation and neglected small cuts can cause big damage. Have Shell check pressure every week. And Shell will switch tires to counteract uneven wear—only 25¢ per tire.
OIL FILTER — Reduce Wartime Stop and Go engine wear caused by impure oil. New oil filter cartridges installed quickly at Shell.

Back the attack!!! buy more Bonds



MAKE A DATE FOR SHELLUBRICATION TODAY