

Halt Called On Price Boom In America's Food

WASHINGTON, Feb. 3.—(AP)—The nations' farmers heard straight from headquarters today that the war boom in the market for their products has gone about as far as the agriculture department and the office of price administration will permit.

Leon Henderson, the price administrator, and Secretary of Agriculture Wickard disclosed yesterday they were in "complete agreement" that the cost of living should be stabilized.

The agriculture department will do its part by using government-owned stocks of grains and cotton "to supplement private stocks" and by keeping feed prices at levels which will encourage production of meat and livestock products.

The price administrator will reciprocate by bearing down on the prices of things farmers buy.

The joint statement did not disclose how high they planned to let farm prices go, but Wickard provided a clue Saturday when he told the senate agriculture committee he thought "around parity" would be about right.

Parity is a price which would give farm products the same purchasing power as they had in a stipulated previous period—for most crops, the years 1909-14.

Farm prices averaged 102 per cent of parity as of January 15, the agriculture department reported. Some were much higher, some much lower.

Under the recently enacted price control bill, the secretary of agriculture was given veto power over farm price ceilings fixed by the price administrator. President Roosevelt was critical of the clause, but signed the bill into law and yesterday formally nominated Henderson as administrator.

passengers are eligible to receive tires, but the present rules do not provide tires for ordinary passenger cars used as taxicabs. The council's letter to the board will stress the importance of the service in Roseburg and will urge a modification of rules in favor of the taxicab operators.

Claims Allowed

The usual routine business was conducted, including the reading of reports from various city officers and departments and the payment of bills accumulated during the past month as follows:

J. M. Bartley, repairs police car	\$ 2.15
California - Oregon Power Co., water & light	836.41
Peter Crummett, repairs gas pump	5.20
Douglas National bank, rental safe deposit box	3.60
Douglas Abstract Co., blueprints for airport	1.50
Thomas Fletcher, care of dogs	6.50
Howard Cooper Corp., repairs fire truck	50.50
Quine & Company, insurance library building	118.00
Rensselaer Valve Corp., repairs fire hydrants	22.06
Richfield Oil Corp., kerosene, street Dept.	6.80
Sterling Richmond, repairs to damaged car	12.10
Roseburg Electric, light bulbs & light repairs	4.05
Roseburg Lumber Co., 6 units sawdust	12.00
Sanderson Safety Supply Co., first aid supplies	24.13
Silver Nook Grille, meals for prisoners	2.80
Standard Oil Co., gasoline Standard station, Robt. Miller, repairs street truck	34.58
Union Oil Co., car of asphalt	485.29
G. W. Young & Son, premium Treas. bond	50.00
Sewer Emergency Fund California - Oregon Power Co., water, light, power	83.27
Denver Fire Clay Co., sewer plant supplies	1.22
Standard Oil Co., 5 gals. Pearl oil	.75

Singapore Battles Fire Following Jap Raids

(Continued from page 1)

and dive bomb attacks being carried out and causing some fires," British headquarters reported.

"Military casualties have been slight."

Java Base Raided.

Other Japanese warplanes struck for the first time at Java, heart of the Dutch East Indies, raiding the big Soerabaja naval base.

Java is the headquarters of General Wavell's supreme united nations command in the far Pacific.

Besides attacking Soerabaja, the Indies' chief naval base, a formation of 26 Japanese bombers, strongly escorted by fighters, also pounded towns in eastern Java in what may have been the prelude to an invasion drive. A communiqué reported "considerable damage" and casualties.

The main objectives of the raiders, military observers told the Dutch agency, undoubtedly were to cripple the Soerabaja base, whose importance to the united nations in the Pacific has become paramount now that Singapore is under siege, and to incapacitate airfields there, at Malang, Madouan and Magetan.

U. S. Bombers Aid Fort.

With American flying fortress bombers now helping in the defense of Singapore, smashing at Japanese airfields on the Malay peninsula, the atmosphere in the beleaguered island citadel was far from pessimistic.

Military experts expressed belief that a parachute attack or a night thrust by small boat crews across the mile-wide Johore strait would open Japan's prestige offensive, regarding a simple state of siege as foreign to Japanese strategy.

Concentration of the reinforced defenders within a shortline of little more than 70 miles was cited by the British in a forecast that either aerial or maritime infiltration tactics against the gungirt stronghold would fail.

Japanese Losses Heavy.

A Chinese army spokesman in Chungking said Japan's bloody losses in the eight-week-old conflict were forcing her to draw heavily on manpower reserves and that the bodies of 10,000 slain in the Malaya campaign alone had already arrived at Saigon, Indo-China.

The spokesman reported that a huge Japanese convoy, including 41 warships and 28 other vessels, had been sighted steaming southward in Formosa strait, carrying

troops to make up for casualties. These might be headed for Malaya, the Philippines or the Dutch Indies.

Evidence of increasing air strength in the Singapore area came from a U. S. army report that small formations of flying fortress type bombers had raided the Japanese air fields at Kuala Lumpur and Kuantan. Low visibility prevented accurate assessment of the damage. All returned to their base.

In another theater of the southwest Pacific four heavy U. S. bombers assigned to raid Japanese shipping in the Borneo port of Balikpapan were set upon by Japanese fighters. Nine Japanese planes were shot down against a loss of one of the bombers, the army communique said.

Aid on Way, Singapore Told.

Australian Army Minister Forde declared today that "a big movement by the allies is under way" to counter Japan's sweep in the far Pacific.

In a broadcast to the Australian imperial force at Singapore, Forde declared that each hour Japan's siege armies were held at bay permitted the massing and development of more reinforcements and the accumulation of more weapons.

"It does not need my words to impel you, therefore, to hold on," he said.

Forde did not specify the nature or direction of the allied movement.

M'Arthur Shatters Jap Troops in Bataan Blow

(Continued from page 1)

who was born in Brooklyn, N. Y., June 15, 1894, entered the army as a corporal in the Illinois national guard in 1916. He went to the Philippines in January, 1940.

Sea Toll Increased.

Meanwhile, General Wavell's headquarters in Java announced heavy new blows inflicted on the battered Japanese invasion armada in Macassar strait, between Dutch East Borneo and Celebes island.

United States warplanes twice attacked the enemy convoy yesterday off Balikpapan, sinking two transports and probably another.

Combined Dutch and United States air and naval attacks are now credited with sinking a total of 46 ships in the shark-infested Macassar strait.

New U. S. Blows Expected.

Daring new American air and sea attacks to slow the onrush of Japanese forces in the southwestern Pacific were confidently expected in Washington today on the basis of official statements.

An army report that formations of heavy American bombers were helping the defense of Singapore by raids on Japanese airfields gave evidence of increasing air strength in that vital area.

As for the warfare at sea, Admiral Chester W. Nimitz, commander-in-chief of the Pacific fleet, declared that every man and every vessel of his command was being used to the fullest extent to take the war to the enemy's front door.

Small formations of flying fortress type bombers raided the Japanese airfields at Kula Lumpur and Kuantan, on the Malay peninsula, the army said. Poor visibility prevented a check on results of the attacks, but the planes returned safely to their bases.

Another formation, consisting of four heavy bombers, was intercepted by Japanese fighter planes while on the way to attack shipping in the Borneo port of Balikpapan. One of the bombers was lost but nine Japanese planes were shot down in the ensuing battle.

Oregon Cigaret Tax Law Put Up to State Voters

(Continued from page 1)

November whether they want the tax.

Expense Statement Okay

Today's decision, by Justice Bailey, said that the statute requiring filing of expense statements by sponsors of referendum movements "does not require that the service for which money is paid be minutely described or that everything an employee does to earn his stipend be set forth in the statement of disbursements. It is our opinion that the statement of contributions as ex-

penditures filed by the State Retail Grocers association is in substantial compliance with the provisions" of that statute.

The decision, overruling the attorney general's demurrer to the action, "is overruled, and it is ordered that a peremptory writ issue, directing the secretary of state to place on the official ballot for the general election of November 3, 1942, as a referendum measure, house bill 558 (the cigaret tax law), passed by the 1941 legislative assembly."

The attorney general had contended that the term "field work" in the association's expense statement was not properly defined, but the court said the term could be understood by any layman.

Those participating in the unanimous decision were Chief Justice Kelly, and Justices Belt, Bailey, Lusk, Rand, Rossman and Brand.

British Turn on Axis Pursuers in Libya

(Continued from page 1)

armies were declared to have inflicted heavy new losses on the Germans and beaten off Nazi counter-attacks launched in a vain attempt to halt the red armies' advance.

In the Ukraine, the German high command acknowledged fresh soviet pressure northeast of nazi-held Taganrog, on the Sea of Azov, but asserted that elsewhere on the 1,200-mile battlefield German troops scored local successes despite "stubborn enemy resistance."

The Russians, fighting on the biggest land front of the whole war, said the Germans had suffered heavy losses in vain attempts to seize the initiative and reported 1,400 killed in three engagements.

The soviet information bureau acknowledged that Feodosiya, a Black sea port used in the red army's recent invasion of the Crimean panhandle, had been abandoned "some days ago."

Germany announced recapture of Feodosiya Jan. 19, saying more than 4,600 Russian soldiers and large quantities of equipment including 73 tanks and 77 guns had been seized.

More Executions in Paris

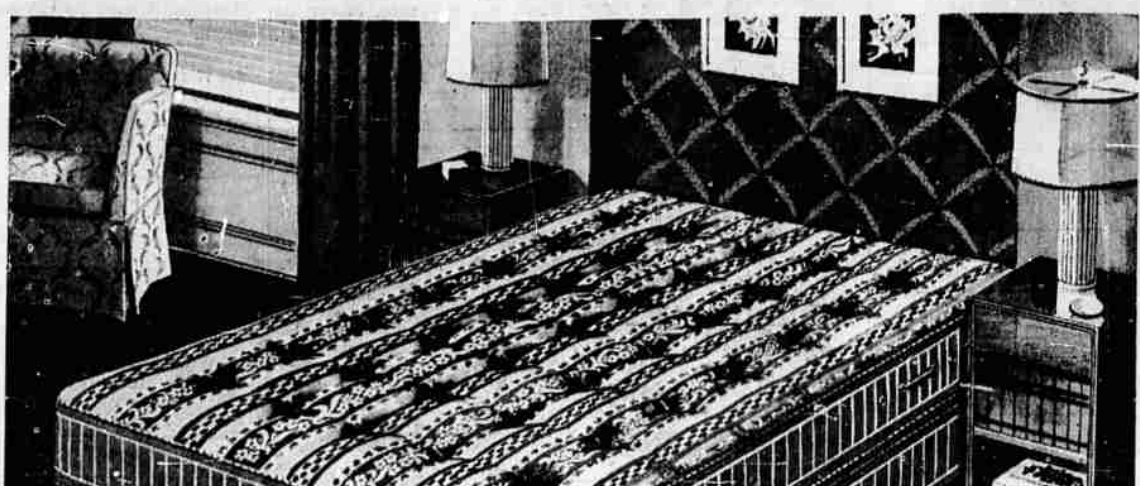
Meanwhile, new evidence arose of militant unrest in German-occupied France.

Six bombings and shootings directed against German army installations or soldiers between Jan. 7 and 28 have led to the execution of six Parisian youths and orders for deportation to the east of 100 others officially described as "members of the communist youth and Jews."

The retaliatory measures—grim but representing a marked recession from mass executions earlier which drew protests from the Petain government—were announced by the Nazi military commander in Paris.

Prices Go down...WARDS GREATEST FEBRUARY FURNITURE Sale!

In a rising market Wards are cutting furniture prices! We bought months ago! You save now!



Sale! You'll Agree You Save \$10

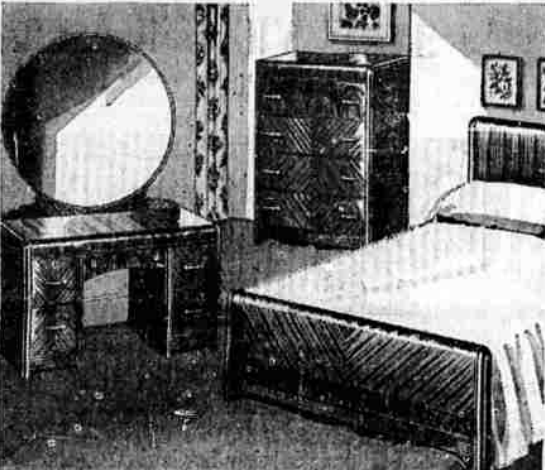
306 COIL MATTRESS

It's a luxury 306 coil unit, Flex-O-Lator upholstered in deep, soft, felted cotton and tough resilient sisal pads! Deep, felted cotton and sisal! Fine damask ticking! See it today!

26⁹⁴

Box Spring and mattress 41.88
Sale! King-O-Sleep Mattress 20.94

\$3.50 a Month, Usual Down Payment and Carrying Charge



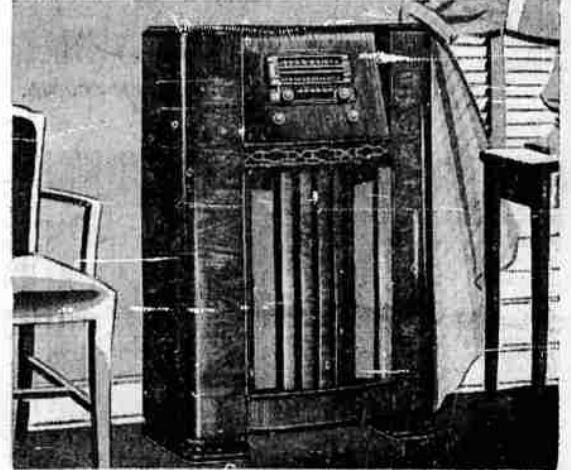
Choice! Natural or Bleach Walnut

3 Pc. MODERN SUITE

Imagine! Costly walnut veneers and hardwood in waterfall style at this amazing price... you save up to \$15! Lustrous, hand-rubbed finish is both heat and liquid resistant! The mirror is tarnish-proof plate-glass! All drawers are center-guided to open and close easily! Bed, roomy chest and vanity!

74⁹⁴

\$7 A MONTH, Usual Down Payment and Carrying Charge



Value Sensation at This Price!

BIG CONSOLE RADIO

Act now... and save dollars on this 8-tube Airline Deluxe! Get thrilling tone perfection... and direct European reception! Tone control! Loop aerial! Automatic tuning! Plug for F-M, Television and records! Rectifier and tuning eye included! Compare anywhere up to \$30 more! Price cut! Limited time only.

58⁸⁸

\$5 MONTHLY, usual down payment and carrying charge

Why Pay 20% More?

Wardoleum Flooring

6 and 9 ft. widths! **39c** sq. yd.

Cover your floors wall to wall at this Sale price! Long-wearing, waterproof, stainproof! Newest patterns and baked-on enamel colors! Identical to nationally advertised brands!

Save up to \$6.50

Axminster 9x12 Rug

All Wool Pile! **35⁸⁸**

Here's real floor covering beauty at a sensational low price! Newest patterns, rich lasting colors... deep ALL WOOL pile! Long wearing quality!

Rug Cushion 5.78

Massive Sofa-Bed

Semi-modern styling **54⁸⁸** combined with real comfort! Rayon and cotton velvet!

2-pc. Suite 94.88

Inlaid Linoleum

Regular \$1.10 Burlap Back Inlaid Linoleum! Marbled pattern in choice of several colors! **97c**

6 ft. width. Sq. Yd.

2 Pc. Living Room

Compare at \$20 More! **99⁸⁸** Compare in new Clifton and "Nylon" velours! Roll-front cushions!

Washable Cretonnes

At Wards only! Harmonizing colors, patterns like finest! Pre-shrunk! Best dyes used to resist fading. Yard **44c**

MONTGOMERY WARD

Enjoy the things you want today... pay in convenient monthly installments on Wards Payment Plan. Any \$10 purchase opens an account.

Buy all your needs at Wards. Our Catalog Order Service brings you thousands of items that we have not room to stock in our store!

Welders Back on Job In Puget Sound Yards

TACOMA, Wash., Feb. 3.—(AP)—With employers reporting a back-to-work move under way, idle welders of the Puget sound area announced today they would pursue an undisclosed new course in their rebellion against compulsory membership in AFL unions.

Yard officials at Seattle reported welders returned to work today "practically 100 per cent."

The change in tactics, which Shelly Knutson, new welders' leader at Seattle said he could not reveal yet, followed a stinging indictment by war leaders of the welders' walkout in Seattle and Tacoma shipyards.

The statement issued yesterday by War Production Director Donald Nelson, Secretary of War Henry L. Stimson, Secretary of the Navy Frank Knox and Maritime Commission Chairman Emory S. Land branded the walkout as "an attempted impairment of the war effort."

Stronger Air Raid Alarm System Urged

(Continued from page 1)

ing a type of signal designed in that city and using compressed air or gas for operation.

Cost Placed Around \$1,000

It is anticipated as a result of the discussions held last night, that the city council will contact manufacturers of signal devices to obtain more information on the effective range of various pieces of equipment and the cost of installation. It was roughly estimated that the probable cost of a system meeting the needs of the city of Roseburg would be about \$1,000. The fact that the city's residential areas are broken by hills makes installation of more equipment necessary than if the city were in a more open and level location.

The council last night awarded the contract for gasoline and oil for the year of 1942 to the Richfield Oil company, which submitted a bid of 14.20 cents per gallon on gasoline. Seven major companies submitted bids, ranging up to 16 cents per gallon. Four made uniform bids of 14.22 cents per gallon.

Taxi Operators Ask Tires

At the request of the operators of local taxi companies, the council authorized a letter to the state tire rationing board urging that steps be taken to include the companies in the list of those eligible to purchase tires. It was pointed out that the city has no form of public carrier other than the public taxicabs, operated by two companies. Carriers operating vehicles carrying ten or more

a distinguished stopping place!

MOTEL MULTIMAN

Portland's Social, Civic and Business Center!

YOU CAN GET

CREPE SOLES

Put On Your Shoes at

Hobby's Shoe Renewing

BASKETBALL TONIGHT

Roseburg High School vs. Ashland High School

SENIOR HIGH SCHOOL GYM.

Game Time	7:45	Preliminary at 6:45
Adults	40c	Camas Valley vs. Roseburg B's
Students	25c	

Inc. tax