

### Old Gout Remedy Used by Scientist To Increase Crops

By WATSON DAVIS

(Director, Science Service)  
(Written for NEA Service)

A few years hence, when bigger and better peaches, peaches, grapes, strawberries, raspberries, as well as more prosaic vegetables, come to your dinner table, you may remember that the man who took the first botanical steps toward them was Dr. Albert F. Blakeslee, geneticist who heads Carnegie Institution of Washington's department of genetics, at Cold Springs Harbor, Long Island, New York.

An old-fashioned gout cure, extracted from the bulb of autumn flowering crocus, called the meadow saffron because of its beautiful yellow flowers, is responsible for a promising spurt in plant breeding. This drug is called colchicine.

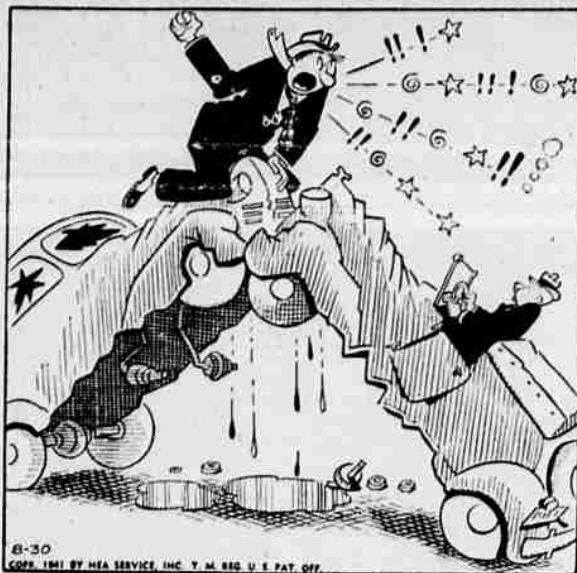
Dr. Blakeslee used it first on handy but not particularly useful plants like jimsonweed and chickweed with which he had been experimenting for years. The heredity of these plants, the way in which their chromosomes were passed on from generation to generation, was intimately known.

**Produces Plant Giants**  
From his tests on a few miscellaneous plants ranging from radishes to phlox, Dr. Blakeslee soon became keenly aware of the practical possibilities of using the poisonous colchicine for creating new varieties of plants. Today scores of scientists in the U. S. department of agriculture and elsewhere are injecting, spraying or washing this drug on the leaves and stems and flowers of plants in the hope of producing new giants for field and garden.

The trick that colchicine performs is the doubling of the chromosomes, which produces a giant generation, capable of being perpetuated. Many ordinary hybrids are sterile. But colchicine-produced giants can be made to breed true, which is what the commercial plant grower is looking for.

Dr. Blakeslee has been one of those who has greatly speeded

### FUNNY BUSINESS



"All that and a couple of words I can't think of!"

### Action—Romance—Thrills



Clive Brook and actors in a scene from "Convoy," a picture full of action in the new war, now playing at the Rose theatre.

### New Excise Tax Schedule Drawn To Boost Revenue

WASHINGTON, Aug. 29.—(AP)—A senate finance subcommittee yesterday agreed on a new schedule of excise taxes which members said would add approximately \$400,000,000 to the \$3,503,900,000 tax bill.

The subcommittee, composed of Senators Brown (D. Mich.) and Danaher (R. Conn.), reported its findings to the full committee after a session devoted to developing new sources of revenue.

Both Brown and Danaher declined to reveal details of the new schedule. Brown said, however, that "we increased some existing taxes and provided for a few more."

The excise taxes are those imposed generally upon manufactured articles.

Prior to the subcommittee's report, Senator Downey (D. Calif.) urged the committee to write into the revenue bill provisions for a new pension schedule which would provide \$30 monthly for persons over 60. Downey also protested against the committee's increase in the schedule of wine taxes.

"The house increased the taxes about 33 1/3 per cent," Downey told reporters, "but the committee increase would amount to almost 100 per cent. That would be a very serious blow to California grape growers."

**Joint Return at Issue**  
Senators opposing any change in the existing community property regulations of eight states forced reconsideration of the committee's vote to prevent husbands and wives from dividing their income for tax purposes.

Under the laws of Texas, Louisiana, Arizona, New Mexico, California, Idaho, Nevada and Washington, husbands and wives may divide their taxable income and thus, in many cases, reduce their tax obligation. For instance, a husband earning \$20,000 and a wife having an income of \$2,000 both could file a return for \$11,000. Such a procedure would make their total taxes lower than if each income were reported in separate returns.

The finance committee voted 13 to 5 Monday to require the spouse receiving the income to file the return on it, but Senator Connally (D. Tex.) and others promptly announced they would make an effort to reverse the committee decision. Connally told reporters that if the committee still insisted on the new system today he would carry the fight to the senate floor.

Connally recalled that some states had had community property laws for many years. In the past, he added, the supreme court, the treasury and the senate have recognized the states' right to enact such laws.

**Corporation Levy Eased**  
The senate finance committee voted to ease slightly the projected new taxes on corporations. On a vote which Senator Byrd (D. Va.) said was approximately 2 to 1, the group decided to eliminate a special 10 per cent tax which the house had applied to the profits of corporations exempt from the excess profits tax.

The committee action reduced estimated revenue from the bill by \$50,000,000 to \$3,543,700,000.

Opponent of the special 10 per cent levy have contended that it, together with normal corporation taxes, would place too heavy a burden on companies having too little income to fall within the schedule of excess profits taxes.

### 'Prepare to Fight Hitler,' Says Mooney



Twenty-five years after the famed San Francisco Preparedness Day bombing of 1916 sent Tom Mooney to prison to become labor's cause celebre, Mooney spoke from a hospital bed, his health shattered but spirit unbroken. In his first interview since becoming ill, he spoke in sharp contrast to the young man, who a quarter of a century ago would have accepted martyrdom to keep his country out of war. Now, he says, if he had his health, he would shoulder a gun and lead the working man into battle against Hitler.

### Chief of Chaplains



Chaplain James L. Blakeney, elited for gallantry in the first World War, has been named Ninth Corps Area chaplain, to supervise the activities of chaplains in Western camps and stations.

stand with a cast of 75 name performers. And each day except the closing Sunday there will be the part-mutual races, night horse show and dancing to Leon Mojica's orchestra. Other daily events will be special free acts on the grounds; music concerts by the Oregon Federation of Music clubs; band concerts; free educational and industrial movies.

A variety of special events are on the bill for special days, including the state fair Blondes' contest Tuesday afternoon; the grange song contest Friday morning; the children's day program Saturday morning; editors' luncheon Saturday noon; and Townsend program Tuesday afternoon.

Special displays in the textile department will feature samplers and hooked rugs, the work of Oregon needle artists. Another Oregon artist, Fred Gong, a young Chinese student who recently won a \$1000 prize for his paintings in national competition, will have a special display in the art department. Twelve Oregon counties will

have attractive displays at the state fair in Salem the week starting September 1, fair officials announced this week. These displays are always one of the highlights in the big agricultural building, and feature the land products for which the individual county is best known.

The counties arranging such exhibits this year are: Benton, Lane, Columbia, Coos, Marion, Clackamas, Curry, Hood River, Douglas, Polk, Linn and Yamhill. These are non-competitive exhibits, but the fair pays each county entering a like sum to assist in expense incident to obtaining and setting up the display.

### Rotary Has Quiz Period, Hears Defense Bond Talk

A short quiz period, a talk on defense bonds and a report on program plans for the coming several weeks were program features at the regular weekly meeting of the Roseburg Rotary club yesterday.

Vernon Orr gave a description of the various defense bond issues and answered a number of questions for the club members.

Bruce Mellis, program chairman, stated that plans were in progress, for one evening meeting each month. He is planning, he said, to have such meetings held in various places of business of the members. He also directed a brief quiz period devoted to Rotary history and facts.

One at a Time

The Masai people of East Africa place a taboo on eating meat and drinking milk the same day, in the belief that it makes both the eater and the cow sick.

### Shortage of Farm Labor On Pacific Coast is Serious

SAN FRANCISCO, Aug. 28.—(AP)—Defense industry has drawn so many agricultural workers from the field that farmers on the Pacific coast are suffering from a distinct shortage of labor in harvesting their crops, but it hasn't solved the old bugaboo of the migrant problem, L. L. Hewes, Jr., regional farm security administrator, said today.

Migrants are pouring into California at a rate equal to the human flood of 1937. Some 40,000 people drove into the state last month, searching for manual labor. But apparently most of them drove to the cities to work in factories, shipyards and other defense industries.

Wherever the job-hunters went, farmers from Okanogan in northern Washington to Los Angeles in southern California reported they didn't have enough help to harvest crops or they worried about what they were going to do for workers when the big crops were ripe.

Schools were reported ready to delay opening in five or more California counties, two counties of Washington, and ready to excuse children for farm work in two cities of Oregon where one high school will be closed for the October potato harvest.

More pickers are needed for the crop harvest in Washington, Oregon and California. There aren't enough hands to reap wheat in eastern Washington. Bean and fruit growers in Oregon said they needed more pickers. The prune districts of the north California coast and northern Sacramento valley called for more workers. The Sonoma valley of California reported simultaneous harvest of hops, apples and prunes found them short of workers.

The California department of employment is trying to move

workers from areas where they are plentiful to harvest sections. Arizona is trying to make arrangements to import Mexican labor for cotton picking. Yakima, Wash., has organized an emergency harvest committee. Salem, Ore., business houses closed Tuesday so white collar workers could harvest a bumper bean crop.

**Floor Sanding and Refinishing**  
Old Floors Made Like New  
**CHAS. KEEVER**  
Phone 651-J Phone 128

**Rice & Meyers**  
Sheet-Metal Works  
Sheet Metal Work  
Tailored to the Job  
404 W. Lane St. Phone 320

**Marsters' Drug Store**  
will be OPEN  
This Sunday

Hours  
8 A. M. to 9 P. M.

**ONLY 3 DAYS LEFT**  
To Buy Your Car On Present  
**LONG-EASY TERMS**

Federal Reserve Board orders restrictions on credit installment purchases of new and used cars, minimum one third down, maximum 18 months to pay balance. Effective September 1.

**BUY NOW WHILE YOU CAN HAVE UP TO 24 MONTHS TO PAY**

**WE HAVE A FINE SELECTION OF MAKES AND MODELS OF USED CARS**

**COME IN TODAY**  
**Lockwood Motors, Inc.**  
YOUR FORD DEALER IN ROSEBURG

### DOUGLAS MARKET

Constantly increasing stocks coupled with quality meats at a saving make it a pleasure to trade here. Compare our prices and quality.

- BEEF ROASTS** — Quality grain fed beef, lb. **15c**
- SHORT RIBS** — Nice any time for baking or stewing, lb. **11c**
- BACON OR BACON BACK** — By the piece, **23c**
- STEWING VEAL** — Now the weather is cooler take advantage of cheaper prices, lb. **15c**
- LAMB SHOULDERS** — Small averages 3 to 5 lb., tender, tasty meat, lb. **18c**
- HAMBURGER** — No cereal added, lb. **15c**

Phone us at 350 or call at 238 N. Jackson  
We will buy your livestock at top market prices, either dressed or alive.

man's control over experimental evolution.

**Weeds Increase Crops.**  
This year Dr. Blakeslee holds one of the highest offices in American science, the presidency of the American Association for the Advancement of Science. He is also playing an important role in the work of the National Academy of Sciences. Dr. Blakeslee can be picked out of scientific groups by his closely cropped goatee and alert and friendly manner.

On a typical day in the experimental gardens and green-houses of his laboratory at Cold Spring Harbor, the 67-year-old scientist may be found among his associates and graduate students watching over plants upon which important and perhaps crucial experiments are being performed. From these scientifically pampered weeds are likely to come knowledge which not only will affect the food crops of the future but even the tomorrows of the human race.

**Long Fences**  
The rabbit fences of South Australia, built to prevent total crop destruction, are long enough to extend around the world.

### Stock and Bond Averages

Compiled by Associated Press

August 29:

	30	15	15	60
Friday	62.1	18.2	32.6	43.6
Prev. day	62.2	18.3	32.5	43.7
Month ago	62.7	19.0	32.4	44.1
Year ago	61.2	16.4	35.7	43.5
1941 high	63.9	19.0	35.5	45.0
1941 low	54.8	15.4	30.3	39.1

**BONDS**

	20	10	10	10
Friday	63.3	104.9	102.2	46.1
Prev. day	63.8	104.9	102.1	45.8
Month ago	64.8	105.0	102.9	45.9
Year ago	57.1	103.3	97.0	41.9
1941 high	66.5	105.3	102.1	48.2
1941 low	60.2	104.2	99.0	38.0

**The "United States"**  
There is more than one "United States" in the world. Others are the United States of Mexico, United States of Colombia and the United States of Brazil.

### Fullerton's Cut Rate Drug Store

Two more days of our Factory to-You Sale of amazing values.

- FEATURE VALUE**
- WITH A FULL PINT OF MI-31 SOLUTION, value **49c**
  - Your Choice of
  - PINT PURETEST MILK OF MAGNESIA, value **35c**
  - OR
  - FULL PINT OR PURETEST RUBBING ALCOHOL, value **50c**
  - OR
  - 100 5-GRAIN TABLETS OF PURE-TEST ASPIRIN, value **49c**
- 84c TO 99c VALUE
- Both for 59c**
- 100 Puretest Aspirin, 49c size **39c**
  - Electric Stove, 98c value **89c**
  - 1 Pound Absorbent Cotton **27c**
  - \$1.00 Klensz Professional Hair Brush **75c**
  - 25c Sanitary Napkins, 12's **15c**

- EXTRA SPECIAL VALUE**
- NEVER OFFERED BEFORE  
Limited Quantity
- 50c Lord Baltimore Stationery blue and buff
  - limit rights reserved
  - Choice **29c**
- 
- GUARANTEED**
- Wrist Watch**  
\$2.98 Value **\$2.49**
- \$1.00 Brewer's Yeast Tablets, 250 **89c**
  - 500 Cleansing Tissues **19c**
  - 50c Briten Tooth Powder **39c**
  - 75c Quart Puretest Milk of Magnesia **59c**
  - 50c Klensz Tooth Brushes **39c**

### Oregon State Fair, Opening Labor Day, Offers Great Bill

Another Oregon state fair—the 80th—will be unfolded to the public early next Monday morning, Labor day, when gates are unlocked on the big seven-day agricultural exposition at Salem.

Fair officials have set their sights for an attendance record that will definitely scrap everything that has gone before, and indications in the few days before the opening, are that they will not be disappointed. Officials promise that the fair, in turn, will not disappoint the patrons. Literally thousands of exhibits will be on hand to compete for the \$42,000 premium money; and there will be also a wide variety of special displays.

Crowded livestock shows, and especially cattle, augur stiff competition in the judging ring. Out-of-state cattle entries have themselves set a record, which means Oregon breeders will have more feathers in their caps if they come off with championships. Lots of Entertainment

On the entertainment side, the fair goes superlative, too, for special attractions, and features arranged for the week hit a high not only in quality but also in quantity. Popular program for each day will be "Funzapoppin," the nightly revue at the grand-

**Money to Loan**  
On City, Business Property or Farm  
Inquire at office of H. A. CANADAY  
132 N. Jackson St., Roseburg, Oregon

**Pause... Refresh**

**CARL'S TAVERN GRILLE**

Phone 690 Free Delivery

# GRIMM'S

Fishing Tackle Ammunition

**SPECIALS SATURDAY, AUGUST 30th**

<b>Wheaties</b> Pkg. <b>10c</b>	<b>QUALITY MEATS</b>
<b>Potatoes</b> 50-lb. U. S. No. 2 <b>55c</b>	<b>BEEF ROASTS</b> Lb. <b>18 1/2c</b>
<b>Jello</b> All Flavors Pkg. <b>5c</b>	<b>BACON BACK</b> Lb. <b>27c</b>
<b>BLISS Coffee</b> 1-lb. cans drip or reg. <b>25c</b>	<b>FRESH GROUND BEEF</b> 2 lbs. <b>45c</b>
<b>KALICO KATE FLOUR</b> 49-lb. bag <b>\$1.23</b>	<b>SWIFT PREMIUM CLUB FRANKFURTERS</b> Lb. <b>25c</b>
<b>UMPUA CHIEF FLOUR</b> 49-lb. bag <b>\$1.39</b>	<b>CHICKENS — RABBITS — CHEESE</b>
<b>Fruits and Vegetables</b>	<b>Best Foods Mayonnaise</b>
<b>Local TOMATOES</b> , 3 lbs. <b>10c</b>	<b>Qt. 51c Pt. 31c</b>
<b>Local CANTALOUPE</b> , 3 for <b>10c</b>	<b>White Rose</b>
<b>Seedless GRAPES</b> , lb. <b>7 1/2c</b>	<b>Gallon 35c 1/2 gallon 19c Quart 12c</b>
<b>Green PEPPERS</b> , lb. <b>4c</b>	<b>1 pint free with each purchase. Wash with White Rose and save your clothes.</b>
<b>SWIFT'S CORN BEEF</b> , Can <b>25c</b>	<b>Hi Ho Crackers</b> 1-lb. Pkg. <b>21c</b>
<b>LUMBER JACK SYRUP</b> No. 5 Can <b>49c</b>	