

Wheeler Uses Post Card Method in Peace Drive

(Continued from page 1)

the nearness to subversive activities and treason, the senator asserted:

"Of course, no one should be too hard on the old man (Stimson). He is in his second childhood, and sometimes acts a little ga-ga."

The war secretary said only two such cards had been seen by the war department and added he did not know what proportion were sent to officers and men.

When such appeals are addressed to soldiers, he said, the action "crossed the line of what General Marshall called sabotage."

General George C. Marshall, the chief of staff, yesterday termed "sabotage" attempts to have officers and men oppose extension of their active duty.

Marshall said it was against army regulations for a soldier to attempt to influence legislation.

Stimson exhibited cards bearing Senator Wheeler's frank which he said were forwarded to Marshall by a staff sergeant at Fort Benning, Ga., and a first lieutenant at Fort McIntosh, Tex.

On the side bearing the address was this plea in boxed type: "Write the president today at the White House, Washington, that you are against our entry into the European war."

On the reverse side were excerpts from speeches or statements by President Roosevelt, former President Hoover, Senator Wheeler, Senator Nye (R., N.D.), former Ambassador Jo-

seph P. Kennedy, and Charles A. Lindbergh.

Taft Plan Frowned On.

General Marshall turned thumbs down today on a proposal by Senator Taft (R., Ohio) to limit the maximum active service of selectees, national guardsmen and reserves to 16 months.

In a statement filed with the senate military committee, General Marshall said that Taft's plan "has great merit, but only as a long range plan for peace-time procurement and training purposes."

The present limit is 12 months but the army wants to make the length of service indefinite.

Marshall said:

"The present grave international situation prompts me again to request that congress re-move, by joint resolution or some other form of legislation, the restrictive clauses in the present law affecting the reserve components and selectees, in order that the war department may have the maximum flexibility to meet any situation which may arise."

Committee attaches said they expected Marshall's statement to be followed later in the day by the submission of a war department proposal that congress declare a full emergency, in which the army could be placed on a war-time footing.

Biggest Tax Bill in U. S. History Sent to House

(Continued from page 1)

and gift taxes to produce \$38,000,000 more than was previously agreed upon tentatively.

The tax on broadcasting, estimated to produce about \$4,500,000 annually, would be levied on the net time sales of a station, in excess of \$100,000 to \$500,000, in excess of 10 per cent on those from \$500,000 to \$1,000,000 and reach a maximum of 15 per cent on all above that sum.

Persons engaged in renting billboard space to others would be required to pay an occupational tax of \$5 yearly on every billboard of 300 square feet or less; \$8 on those between 300 and 600 square feet and \$11 on those larger. It was estimated this levy would yield \$7,000,000.

The measure was scheduled for committee introduction in the

house today. Passage of the measure next week in approximately its present form was virtually assured, administration leaders said. Major changes might be made, however, when the bill reaches the senate.

Yields Are Estimated

The treasury estimated that the new individual income surtaxes would produce \$1,152,000,000 of the new revenue and that \$1,322,900,000 of the balance would come from corporations. The higher estate and gift taxes were counted on to yield about \$151,960,000 and new or higher excise levies on almost two-score commodities or services for the remaining \$902,400,000.

About \$300,000,000 of the individual income tax revenue was estimated to result from a provision of the measure requiring that husbands and wives with separate incomes make joint returns. Present law permits separate returns. Joint returns were expected to force the total taxable income of many families into the high surtax brackets.

In boosting the corporation taxes, the committee concentrated chiefly on excess profits hiking the rates which now range from 25 to 50 per cent to 35 to 60 per cent and revamping the method of computing such profits.

It also voted to impose surtaxes of five per cent on the first \$25,000 of taxable income and six per cent on all over that figure. Excess profits credits were revised somewhat so that firms computing that tax on the invested capital method would be allowed only seven per cent on invested capital in excess of \$5,000,000, instead of the present eight per cent. The latter would be retained on capital up to \$5,000,000.

Levies Are Widespread

Outstanding among the excise taxes on goods and services were a proposed \$5 annual use tax on all passenger automobiles, airplanes and yachts less than 28 feet long; \$25 annually on coin operated amusement and gambling devices such as slot and pin-ball machines; a seven per cent tax, double the present levy, on the sale of new automobiles; and 10 per cent retail sales taxes on toilet preparations, including toilet preparations, including cosmetics, jewelry and furs.

Other items which would be subject to new or higher taxes included watches, sporting goods, electrical appliances, office and business machines, photographic apparatus, commercial washing machines and soft drinks.

The tax on liquor was boosted \$1 a gallon and the committee voted that the increased levy must be paid on all floor stocks. It gave the dealers nine months in which to pay the floor stock tax, however.

Arrives On Furlough — Marshall Hunt, who is stationed at Camp Murray, Wash., has arrived here to spend his ten days' furlough visiting his parents, Mr. and Mrs. C. W. Hunt, on Reservoir avenue. Before going into the army, Mr. Hunt was employed at the News-Review office.

Japan Denounced by American Government

(Continued from page 1)

government of Indo-China find themselves is, of course, well known. It is only too clear that they are in no position to resist the pressure exercised upon them.

(By the Associated Press)

Japanese warships were reported today off Cape St. Jacques and Camranh bay, on the French Indo-China coast, after the French were said officially to have yielded to Tokyo demands for air and naval bases in the French colony, stirring fears of a possible Japanese thrust southward toward Britain's great naval base at Singapore and the rich Dutch East Indies, treasure-house of rubber, tin and oil.

Dispatches from Saigon, Indo-China, declared also that 12 Japanese troop transports were en route to Saigon, less than 700 miles by air from Singapore.

Japan presented herself today as the guardian of French Indo-China against "Anglo-American imperialism" and the free French but aside from secret foreign office conferences at Tokyo, there were no indications of actual Japanese moves.

The foreign office-controlled Japan Times and Advertiser declared that "Indo-China sees collaboration with Japan as the only salvation."

Washington dispatches said the United States and Great Britain were ready to take swift and drastic counter-action:

1. Sweeping economic restriction on Japan by the United States, possibly including a "freeze" order on Japanese assets in this country, an embargo on oil and other vital materials, the halting of U. S. purchase of Japanese gold, and increased military aid to China.

2. Possible military action by Great Britain.

JAPANESE SHIPS DEFER LANDING IN AMERICA

SAN FRANCISCO, July 24.—(AP)—More than 40 Japanese ships bound for U. S. ports were reported here to off shore today, as a result of Summer Welles' declaration that Japan's latest move against French Indo-China had endangered United States safety.

It was understood they were awaiting orders from the Japanese government.

Whether the action was due to reports that Japanese credits might be frozen in the United States was a subject of considerable conjecture. The credits would have to be within a three-mile limit at sea before being subject to such an order.

Invasion of Russia Reported Slowed Up

(Continued from page 1)

No officers of the United States embassy were in the ambassador's residence. Four American newspapermen who were there at the time were unhurt. Curtains were ripped and rugs

and furniture were showered with glass.

Japanese, Russians Clash

Few details were immediately available on the reported clash between Japanese and Russian troops in the east.

Dispatches from Shanghai said the fighting was reported to have started last evening in the vicinity of Changkufeng, the scene of a Russo-Japanese "vest-pocket war" in the summer of 1938.

There was no immediate confirmation of the reports, which were said to have come from sources close to the Japanese military, and Japanese army press headquarters in Shanghai said they had "heard nothing" of such fighting.

Far east dispatches in recent days have indicated that Japan would probably attack Russia from the east, along the Siberian frontier, if and when Russia's red armies in the west collapsed under nazi invasion blows.

Red Defense Holding

London advices, picturing the German onslaught as having lost its momentum, declared there had been no regrouping of nazi armies for a third assault in the 33-day-old conflict—such as might explain the present slowdown.

The red army's stand on the central sector was pictured in Moscow dispatches as the most brilliant resistance of the war and Russian troops were said to be still holding on grimly in the Smolensk sector a week after the Germans struck in that direction.

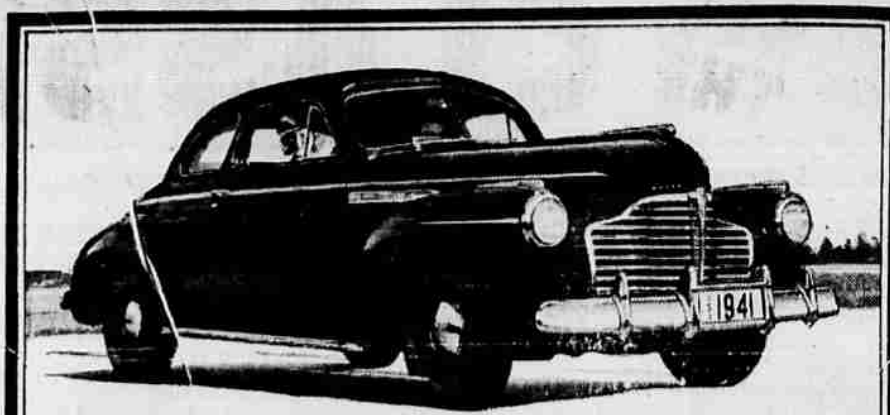
(The German radio today repeated the claim that Smolensk has been in nazi possession since July 16 and said "order has now been fully restored there.") The British radio, however, declared "there is every reason to believe that Smolensk is still in Russian hands."

Meanwhile, the London radio reported that 5,000 Serbs had risen up against the German conquest in Yugoslavia, attacking nazi garrisons and outposts. In one foray, 200 Serbs were said to have swooped down from mountain hiding places, attacked a garrison and returned to the hills with prisoners.

British bombers continued their offensive against western Germany and dropped bombs and incendiaries. Berlin said there were a few casualties.

Shortly after dawn today more British aircraft swept across the channel to renew their pounding of German objectives.

German bombers attacked northwest England and Scotland during the night but were reported to have caused little damage.



It breathes through an extra "Nose" for action

In one important way this stunning straight-eight pictured here is like no other in the world.

It has two "noses" to breathe through.

One of them is the forward carburetor of Buick's Compound Carburetor†—a thrifty, smaller-size gas-and-air mixer that handles all your normal driving with the greatest of ease and the maximum of thrift.

The other is a second carburetor with a very special mission.

\$930
for the Business Coupe (illustrated above) including Compound Carburetion.

It waits, unused, until you want action. Then—The extra "nose" opens. Your engine

breathes deeper. And z-i-i-p!—you're away in an extra burst of reserve power no other car in the world can provide.

Sounds good? Naturally—but that's only part of it.

Facts are, your engine is more efficient with Compound Carburetion's extra "nose" for action. Owner-experience shows that you actually go as much as 10% to 15% farther per gallon than you did in previous Buicks.

So better go try it. Try out Buick's bigger size, greater room, extra comfort at the same time.

Then ask delivered prices. Instead of being higher you'll find them actually lower than you'll pay anywhere else for anything like equal value.

†Available on Buick SPECIAL models at slight extra cost, standard on all other Series.

"Best Buick Yet"

EXEMPLAR OF GENERAL MOTORS VALUE

ROSEBURG MOTOR CO.

Oak and Rose Sts.

Roseburg, Ore.

WHEN BETTER AUTOMOBILES ARE BUILT BUICK WILL BUILD THEM

Fishermen Attention!

We carry a complete line of Fishing Tackle... Open evenings and Sundays.

THE CLUB
127 W. Cass St.

POWELL'S
FOR
FISHING TACKLE

245 N. Jackson St., Roseburg

TOPS 'EM ALL!

PEPSI-COLA

Made only by Pepsi-Cola Company, Long Island City, N.Y.

AMERICA'S BIGGEST NICKEL'S WORTH

Authorized bottler Pepsi-Cola Bottling Co. of Roseburg, Oregon



DODGE FLUID DRIVING Hits Another High!



One after another, the swiftly passing weeks report fresh, record-smashing sales successes for Dodge All-Fluid Drive, as the new 1941 multitudes of Dodge Fluid Drivers report back, in detail, their "true confessions" and experiences. These reports tell the story of a great mechanical triumph. The vote for Dodge All-Fluid Drive is truly unanimous.

Why not join the two hundred thousand All-Fluid Drivers whose happy satisfaction guarantees your own? Yes—why not see your Dodge dealer and go for an All-Fluid Dodge ride in the top value of the year.

NEVER SUCH A TIME TO BUY

TUNE IN ON MAJOR BOWES, C. B. S., THURSDAYS, 9 TO 10 P. M., EASTERN DAYLIGHT SAVING TIME

Dodge ALL-FLUID DRIVE 25 extra

CAR PRICES AND SPECIFICATIONS SUBJECT TO CHANGE WITHOUT NOTICE.

SI DILLARD MOTOR CO.

Main at Douglas St.

Roseburg, Ore.

The Olympia Brewing Company is happy to announce the appointment August 1, 1941, of

THE DOUGLAS DISTRIBUTING CO.

Clyde Fullerton and Albert Mecelli, Proprietors

Phone 14 — Roseburg, Oregon

As Wholesale Distributors of Famous Olympia Draught and Bottled Beer in the Roseburg Wholesale Area

Famous OLYMPIA BEER
"It's the Water"



Famous beers of the world are supreme because brewing skill and fine ingredients are combined with a rare and special type of water that improves every process of brewing. As the waters of Munich and Burton-on-Trent have made these beers famous, so have our subterranean wells of Tumwater made Olympia famous for rare flavor, clean taste, constant purity, and refreshing goodness.

OLYMPIA BREWING COMPANY
OLYMPIA, WASHINGTON, U. S. A.

"One of America's Recognized Fine Beers"

brewed in "One of America's Exceptional Breweries"