

Harmony In Ensemble Is Cue for Men

Season's Shirts, Ties and Kerchiefs Give Smart Effect; Suit Type Important.

Approaching spring and summer with comfort as the keynote, the 1939 male will be wearing light mesh and voile shirts in white and striped effects on pastel colorings . . . shirts with a million tiny windows to allow free passage of air . . . completely conditioned for comfort. The collars will be starched and of the same light material, interfused with a porous fabric that will not impede the flow of air.

For more dressy occasions the man in-the-know will select shirt, tie and handkerchief ensembles that are now marketed by some of the leading shirt manufacturers. Ensemble buying for men is not new by any means; however the styling behind the ensemble is different. Ensemble sets now are not made to match identically but the motif of the shirt is picked up in the handkerchief and tie and re-woven in supplementary designs in each, with the color harmony carried out to contrast or complement. Such subtle combinations of shirt, handkerchief and tie eliminate the stereotyped identically matched sets, and make for a well-dressed man.

Thought Given Type
In selecting ensemble sets careful attention should be paid to the type of suit each is to be worn with. It is a mistake to wear a plain colored tie, suit and shirt . . . the tie should be striped. One should never wear a prominently striped tie with a prominently striped suit . . . that's glaring the eye. Neat figured ties look better with a striped suit or striped shirt. Don't wear a plaid tie with a plaid suit . . . wear a plain colored tie.

When buying a shirt, whether white or colored, look to the collar first. It should be set properly with the figures or stripes symmetrical on each point. The collar should be stiffened or else it will probably shrink out of fit and make the shirt useless after several washings.

Suit Your Type
You should also select the collar of the shirt to suit your type of face and neck. If you have a long neck, thin face, buy the tab or tabless, type of collar . . . It gives the illusion of a shorter neck. If you have a short neck and round square face you should wear a long pointed collar . . . It gives you altitude. If you are very tall, wear the round-pointed collar . . . It's very dressy and smart. In fact an average-necked, average-faced fellow can wear most popular styles.

BLOUSE IMPARTS TOUCH OF YOUTH

Blouses this spring are more diversified than ever and offer endless possibilities in picking up that old suit as well as for many new combinations. Silk sheers, crepes and satins all are used for blouses designated for wear day and night. The feminine trend so important in ready-to-wear is repeated in blouses, and even the most tailored models have dressmaker details such as tucking, pleating or shirring.

Silk sheer jabot blouses continue in popularity. Baby blouses with pin tucked yokes and little round collars repeat the "little girl" look of many spring suits. Lumberjack blouses are liked both for suits and dinner skirts. Waistcoats, come with V necks, are a new-looking Camisole blouses are endorsed and Mainbocher in the recent Paris openings showed a lovely afternoon blouse of a white silk sheer with deep V neck outlined by ruffles of navy blue Val lace. The camisole also had a ruffle of Val lace when it showed at the neckline.

Many feminine details form the trim of even the plaiest blouses. Pockets provide interest as they are set on at angles of seen in new shapes such as triangles or like pouch bags. Contrasting color stitching is used on many of the tailored models. Satin appliques or spaghetti forms a smart trim for mouseline de soie blouses. Cartilage pleats, cluster and pin tuck are all noted. Yokes, sometimes

WHY—Stay at home. Drive around and see our farms and gardens.

PAY—less for our insurance and enjoy

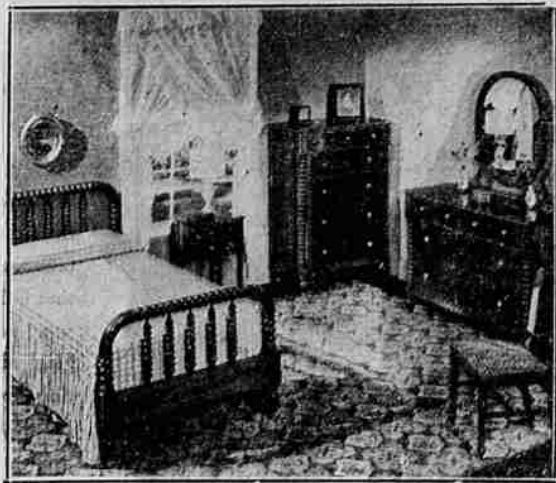
MORE — Security — Service and Stability . . .

LOW COST For Careful Drivers

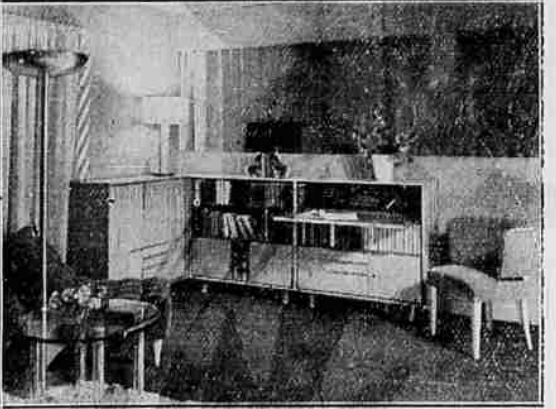


FRED A. GOFF
122 So. Stephens
Phone 218

Which? Traditional or Modern

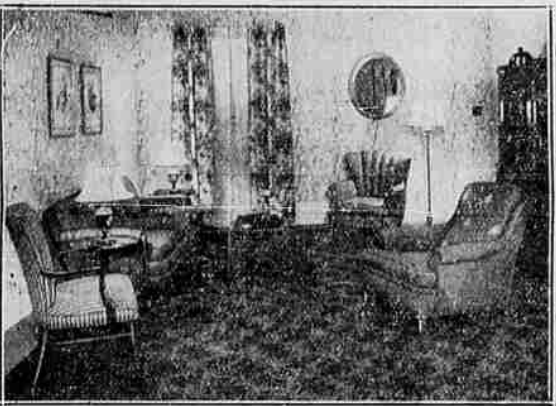


Well-chosen accessories add to the charm of this Federal bedroom group. The night table thoughtfully carries an ash tray; and the design motif, is the attractive spool treatment.



A many-purpose grouping of modern pieces, demonstrating the beauty of walnut with an attractive new gray-tone finish. The hairlike stripe of natural maple inlay, gives unusual effect to this Gilbert Rohde's design. Herman Miller Furniture Co.

Smart Rooms Come In Packages



This is literally a Packaged Room, sold complete to wallpaper, floor coverings, lamps, and furniture, and named the "All-American" room because of its adaptability to American use.

shirred confirm the interest shown in the horizontal line. One silk blouse inspired by a Chanel model continues the horizontal tucks across the bodice in line with the sleeves.

Stripes make news whether they are bayadere, shirring or one of the new novelty printed versions, which combine plain and floral stripes or which shows designs imposed on the stripes.

GAY TRIMMINGS GIVEN NEW HATS

The important part that color plays in spring wardrobes, will necessitate a harmonizing hat for each ensemble—and fortunately there are enough silhouettes to allow for unlimited hat wardrobes!

Shallow to high; doll size for little girl fashions; forward moving to balance the new compromise haircuts; and generously dramatized with flowers and feathers, ribbons and veils, wimples and amoods—even vegetables and fruits, or severely tailored, with such a variety of types—and every hat an individual interpretation, the American woman will have "enough hats" this spring—in sailors and pill boxes, awaggers and turbans, off-the-face and roller brim styles to choose from.

Tip on Roasting
A roast without a bone or one that has been boned and rolled will require a few more minutes roasting per pound than a roast with a bone.

Foot Glamour for Spring . . .

We picked every one of our styles for flattering detail, and because they're the prettiest shoes of the season.



GOLDIE'S BOOTERIE
Roseburg's Only Exclusive Shoe Store

HOUSE CLEANING TIME APPROACHES

Gay and Intriguing Colors Noted in Furnishings for Replacement.

With the house-cleaning season approaching, many a house-maker is going to find shabby chairs that need replacing; tables that might be reconstructed, even if they are slightly "dated," but which would probably be best scrapped and a small investment made in new furniture. Floor coverings have gone to seed, and new rugs will be needed in regular room sizes.

The new styles and colors are gay and intriguing, and stores of this community are about to show the newest models, fresh from the great furniture centers, where buyers from all sections of the country gathered in the dead of winter to make selections for the season now upon us.

Comfort and Beauty
The designers know the public wants both comfort and beauty in its home furnishings. The housewife, constantly being kept alert to the style and color trends, is taking the same pride in keeping her home freshly up-to-date as she is in her own wearing apparel. But she wants comfort along with beauty.

The designers have given their imaginations an exciting fling, and the results are fresh appealing colors in upholstery, draperies and floor coverings. Of special interest to those who favor "blues," will be the new shade, a dusky gray that does not lose its sparkle under artificial light. Whites, too, will be carried along into the color picture for the spring. Pastels, beige, mauve, dusty green, turquoise blue, coral pink, are a few of the colors which will be seen during the coming months.

Planned Convenience
The new furniture is a little more bulky than formerly, but the lines are rounded in sophisticated simplicity. Additional built-in bookshelves, space for knickknacks, and drawer space have been planned with convenience in mind. The woods used are a bit lighter in finish, with the honey and golden finishes leading in popularity and taking the place of the glaring white finishes of a few years ago.

Following next in line is 18th Century, which moved forward a bit during the last few months, the furniture fashion crystal-gazers tell us. The styles reproduced are the usual beauty of the original pieces, but the finishes are new. Mahogany is to be seen in rich pure colors with soft satiny texture; while walnut continues to prove that dull finishes are none-the-less interesting. Highly figured veneers predominate, but the trend is toward straight grains.

BEAUTY PREPARATION CROP NOW BLOOMS

By ALICIA HART
NEA Service Staff Writer
The spring crop of beauty preparations is in full bloom. This is the time to pick what you need for reconditioning your hands, hair and complexion and do give your face the smartly new, greatly coveted fresh-as-daisy look.

If winter winds have left your cheeks rough and your hands chapped, you may be interested in a cream preparation said to contain almost nothing except pure lanolin. It comes in a tube, is really quite inexpensive and is easy to use. Simply smooth a thin film of it on chapped areas several nights a week and leave it on while you sleep.

Kit New Feature
Also new is a kit containing three items to make keeping hands lovely a simpler task. The nail tonic is to be massaged into cuticles and finger tips at night after you have had your bath and creamed your face. The hand cream goes on afterward. It's a light textured, though oily preparation and should be massaged vigorously into wrists and hands.

The third item in the kit is a pair of soft gloves. These are waterproof, washable and of a fabric which cream cannot penetrate. Put them on after hands have been

it's
Phone 424
for
Beauty



ILA'S Beauty Shop
PERKINS BLDG.
MERLE NORMAN COSMETICS

thoroughly oiled and massaged. Wear all night.
Samples Issued
If you are tired of trying to decide which of the season's new shades of rouge, powders and lipstick are becoming, you'll be pleased to know that more and more manufacturers are putting out tiny samples of their cosmetics and encouraging saleswomen to encourage customers to become sample addicts. One of the nicest ideas of the month is one company's offer to hand out a week's supply of rouge and lipstick with each box of face powder.

LOVELY SWEATER COMPLEMENTS SUIT

Sweaters are so good-looking this season it's hard to resist buying several at a time. Lovely pastel colors and smart new styles in light and medium weights make them ideal for wear from early spring right on through the summer months.

If a sweater is said to be washable when purchased, or if testing an inconspicuous part shows the color to be fast, careful washing is the best way to keep it new-looking. First jot down the measurements, or make a pencil outline on a large clean sheet of wrapping paper to serve as a guide in restoring the sweater to the correct size and shape while it dries.

Hints On Washing
Like all fine garments, sweaters should be washed by gentle squeezing in a heavy lather of mild lukewarm soapsuds and with a minimum of handling. A brief second washing in fresh soapsuds is usually advisable. Both the washing and rinsing waters should be kept at an even lukewarm temperature.

After the moisture has been blotted up by rolling in absorbent towels for a moment, sweaters are best dried flat, either pinned to the laundry line or gently coaxed to conform to their original measurements. Pressing should be done, if required, with a moderately warm iron over a dampened cloth. To raise the nap of brushed wool or angora sweaters, pass a heated iron back and forth about one-half inch away from the cloth.

OLDER VARIETIES OF ROSES SUGGESTED

By DONALD GRAY
Landscape Consultant
Roses growing need not be a luxury. A few plants can be grown successfully with little expenditure of money.

Some gardeners can grow healthy roses in the same beds as other perennial or annual plants, but most roses are grown in separate rose beds.
The first requisite for growing good rose plants and hence beautiful blooms is to find a location that gets the morning sun and is shaded from the hot summer sun from noon on. Many of the problems of mildew and black spot will be eliminated if the morning sun can dry off the night's dew.

Hints On Soil
The soil should be prepared by digging a ditch two feet deep. Provide some kind of under drainage such as the old broken stone and bricks. Get the water away from the roots. Clay soil is one of the rose's requirements. If the soil in your garden is sand, then bring in clay for your rose bed.

Mix one-third well rotted manure with one-third sharp sand, and one-third clay loam. Plant the individual plants 15 to 18 inches apart and at a level below the graft.

Spraying Advised
There are lots of diseases and pests that come along with growing roses, but pick by hand the rose beetles and learn to spray the plants regularly during the season with some nationally known spray material which will take care of all the pests with one operation. To be economical in rose growing buy the tried and old varieties recommended to you by your own local nursery. Never buy cheap plants, neither buy the latest named varieties because in a year or so, if these new roses are good, they will be available at the regular price.

DAHLIAS, GLADIOLUS ARE TOP PRODUCERS

Easily Grown if Rules Are Followed; Suggestions on Planting Given.

By DONALD GRAY
Landscape Consultant
Dahlias and gladiolus are plants that produce the most flowers for the money.
These two varieties of plants are most popular with men gardeners. They are easily grown if certain rules are followed and they are sure-fire producers of flowers.

New varieties of both these plants may cost a lot of money, but both produce so many of spring each year that it only takes a few years until they can be bought at a very low cost. So if you are working your garden on a budget do not be lured into buying the most expensive tubers or corms, but rather choose an older variety which will give you beautiful flowers at a low cost.

After you have grown a dahlia plant for a season you will have five or more tubers to plant the next year and if you have a friend who has been growing dahlia plants for a few years you may get a tuber for nothing. All gardeners are as generous and nothing hurts as much as to have to throw away a plant because there isn't room to plant it.

If you are starting your first year's dahlia growing buy tubers of good varieties at 20 to 25 cents each.
When it comes to gladiolus, buy corms of good varieties at 3 to 5 cents apiece.

How To Plant

DAHLIAS: Choose a location with poor growing soil with plenty of drainage and all day sun. Dig a hole two feet in diameter one foot deep. Mix the lower six inches of soil with rotted manure or 10-6-4 fertilizer. Place a three-foot stake in the hole before planting the tuber. Lay the tuber on its side, cover over with six inches of soil and as the plant grows fill in more soil. Pinch off all side branches so as to send the energy of the plant into making large sized blooms. Never water the foliage. Lay the hose on the ground to water the roots.

GLADIOLUS: Soak the corms in a solution of one ounce of corrosive sublimate in seven and one-half gallons of water for 12 hours to eliminate thrip the plant's worst enemy. Plant the corm in any kind of garden soil where there is plenty of sun. Cultivate the ground as the plant grows. If the plant fails to produce healthy leaves of flowers pull it up and burn it so as not to infect other nearby plants.

SPRING LINGERIE OFFERS CONTRASTS

PARIS—(AP)—Spots of contrast are high-lighting new spring lingerie. A combination in pink, satin is trimmed with large "diamonds" of tuckd chiffon in light blue. Large "leaves" of tuckd chiffon in ecru shade spot up effectively a satin nightgown in pale blue, the tucks simulating the veining of the leaf.

Tasty Touch
To enhance the flavor of canned baked beans, mix in a little brown sugar and add a few thin strips of bacon across the top. Bake in the oven until heated thoroughly and the bacon browned.

Spring Dance AND STYLE SHOW
Sponsored By
The Roseburg Business and Professional Women
Tuesday Evening
March 21st—8 P. M.
AT THE ARMORY
DALE KING AND HIS BAND
ADMISSION 35c

CUSTOMADE Rugs and Carpets
In Sizes to Fit Every Room
Let us show you the new spring patterns from the looms of Mohawk. Large assortment of designs and collars, to suit every taste and every purse.
McKEAN & BALDWIN
117 W. CASS ST. TELEPHONE 10

OFF CAR PRICE
American Manufacture
GALVANIZED PIPE
Half inch \$ 5.95 per 100 ft.
Three-quarter inch 7.40 per 100 ft.
One inch 10.50 per 100 ft.
Bundle prices—other sizes equal in price, also fittings.
These very low prices hold until car arrives about April 2.
DENN-GERRETSEN CO.
402 W. Oak St. Telephone 128

"To Serve Others As We Would Be Served"
Douglas Funeral Home
Phone 112—Day or Night
AMBULANCE SERVICE
Our Service Available to All Regardless of Financial Condition.
Frank W. Long
Funeral Director
Licensed Lady Assistant
Chapel and Office Located at Corner Pine and Lane

THE RECORD . . . Facts That Concern You
HERE, MR. FARMER, IS A BIG, NEW CUSTOMER!
BEER BUYS THE PRODUCE OF 3 MILLION FARM ACRES
HERE'S THE ORDER SHEET OF THE BREWING INDUSTRY FOR ONE YEAR.
BARLEY - 63 MILLION BUSHELS
HOPS - 91 MILLION POUNDS
CORN - 375 MILLION POUNDS
RICE - 130 MILLION POUNDS
AND HERE, MR. WORKMAN, ARE A MILLION JOBS MADE BY BEER.
BEER PAYS A MILLION DOLLARS A DAY IN TAXES NATION-WIDE.
AND HERE, MR. TAXPAYER, IS A HUGE SUM TO LIGHTEN YOUR TAX BURDEN!
Good crops at good prices . . . isn't that the kind of farm relief that farmers really want? Since 1933, the brewing industry has bought 15 billion pounds of American farm products . . . paying good prices, too.
Add to that, the million jobs that Beer has made . . . and the fact that Beer pays a million dollars a day in taxes: local, state, national. To safeguard these advantages, the brewing industry stands ready to cooperate fully with all law enforcement authorities. The brewers can enforce no laws . . . but they do insist that retail beer outlets should give no offense to anyone.
Would you like a booklet that describes the brewers' program of direct action? Address: United Brewers Industrial Foundation, 19 East 40th St., New York, N. Y.
BEER...a beverage of moderation