

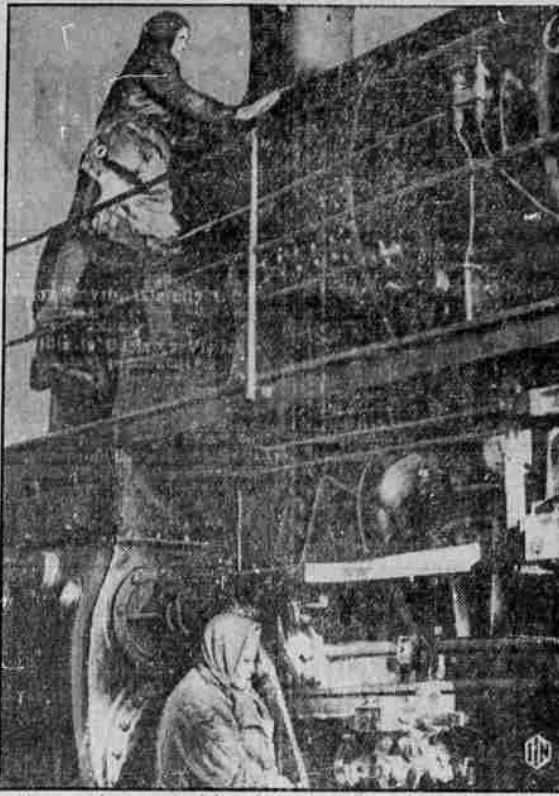
POTENTIAL WATER POWER OF UMPQUA RIVER SET FORTH

The total potential water power of the Umpqua river basin, in Oregon, without shortage, is 243,000 horsepower for 90 per cent of the time and 573,000 horsepower for 50 per cent of the time, according to the Geological Survey, Department of the Interior. If storage were provided these figures could be increased to 354,000 and 549,000 horsepower. With unlimited operation of all proposed plants the power available 90 per cent of the time with storage could be increased in an average year to more than 400,000 horsepower, of which 250,000 horsepower would be on the Umpqua and North Umpqua rivers, 15,000 horsepower on the Clearwater river, 9,000 horsepower on Mill creek, and the rest on smaller tributaries. The Umpqua, North Umpqua, and Clearwater rivers are valuable power streams with large fall and well-sustained flow, and the Umpqua and North Umpqua have possibilities for storage and a concentrated fall, so that also is valuable for power. The South Umpqua river and Steamboat creek, a tributary of the North Umpqua, have some potential power value, but it is questionable whether the sites on these streams can ever be economically utilized. Rock creek and the Little river, both tributary to the North Umpqua river; Cow creek, a tributary of the South Umpqua river; and Elk creek, a tributary of the Umpqua river, have little value for power. These and other pertinent facts are set forth in geological survey water supply paper 636-F, prepared by Benjamin E. Jones, hydraulic engineer, and Harold T. Stearns, geologist, which includes 100 pages of text, 11 plates, and 23 figures, and describes in detail the waterpower resources of the Umpqua river basin and the geology of the principal dam sites in the basin. This report may be obtained from the superintendent of documents, Washington, D. C., for 40 cents.

News of Douglas County

MYRTLE CREEK
(News-Review Douglas County Special)
MYRTLE CREEK, April 8.—Mr. H. P. Troub has his new home about finished and last Monday evening the Bilger Creek neighbors gave a house warming party for them. After a pleasant while refreshments were served by Mrs. Troub.
It is rumored that construction work on the new city reservoir will be started in a short time, possibly next week.
The annual meeting of the members and growers of the South Douglas Cooperative Prunes Growers Pool will be held at the Grange hall Monday, April 11.
The baseball game Friday afternoon between the Oakland and Myrtle Creek high school teams resulted in a victory for the home team by a score of 11 to 4.
Mr. and Mrs. A. E. Burton and son Harold were shopping and visiting in Roseburg Saturday.
Mr. Russell King who recently visited here with his mother, Mrs. Mary B. King and his sister, Mrs. H. W. Gould, has returned to his home in Texas.
Mrs. Jennie Dale is visiting friends and relatives at Myrtle Creek.
Mr. and Mrs. S. L. Puel and Mrs. C. C. March spent the week end at Ashland visiting with relatives and friends. Many old friends of Mrs. Elizabeth Alexander, who lived here many years before moving to Ashland, will be glad to know that her health is slightly improved although she is still confined to her bed.
Born to Mr. and Mrs. Clifford Potter, April 7, a son.
Mrs. Hattie Sherman is at the home of her brother, W. J. Gallop, III with an infected foot.
Mr. and Mrs. Marion Knuder have purchased the Bert Jackson farm on Frozen Creek and moved there to live.
Mr. and Mrs. J. W. Adamson were visitors at the Talbert home on Days Creek Sunday.
The C. E. society of the Christian church will give a pie social Wednesday evening at the church.
Mr. Chapin and Mr. Fate celled the Christian church basement

Women Work in Soviet Russia



The usual women's jobs of stenography, saleswork, needlework, etc., would smack too much of a "pink tea" to these sturdy matrons. When they perform a job it's a real man's job. They play nurse to the giant locomotives of the Western Railway. They oil and vibrate each engine before it leaves on its daily run. They are called members of the "shock" brigade in Soviet Russia.

overhead with plaster board last week.
Mr. and Mrs. F. G. Buell, the Dillard merchant and postmaster, were Myrtle Creek visitors for a short time Sunday afternoon.

SCOTTSBURG

(News-Review Douglas County Special)
SCOTTSBURG, April 8.—Mrs. Frances Rice of Portland spent Monday at the home of her mother, Mrs. Mary Ellsworth. Her daughter, Lorraine Josephine Rice, accompanied her back to Portland after a visit with her grandmother in Scottsburg.
Will Burchard was a business visitor here Tuesday.
Clyde Catching, Roseburg contractor, was in Scottsburg on business Tuesday and Wednesday.
Mrs. Mary Ellsworth spent a day in Reedport last week.
Miss Cora L. John, teacher in the Scottsburg school, visited her home in Goshen over the week end.
Eddie Johnson of Gold Beach is spending a few weeks visiting in Scottsburg.
Eugene Wessela motored to Seaside Wednesday.
Bill Garrison, who resides a few miles out from Scottsburg, spent Thursday in town on business.
Paul Wessela, Theodore Anderson and Will Burchard were visitors in Roseburg Wednesday, transacting business there.
W. D. Ribby of Loom lake was a visitor at the J. Paul Wessela home Friday.
Henry Lupedinger was a business visitor here Thursday.
Fred Weatherly was a business visitor in Roseburg Wednesday.
Mr. and Mrs. Ed Manning spent the past week in Scottsburg visiting and attending to business matters.
William Fisher and Mr. McCloud of Medford were overnight guests at the J. Paul Wessela home Thursday and Friday.
Among those who motored from Scottsburg to Loom lake Sunday were Mr. and Mrs. D. R. Wakefield and son, Junior, Mr. and Mrs. Les Roy Bryson and children, Mrs. J. Paul Wessela and sons, Eugene and Stillman, Miss Rachel Wessela and Miss Lois Wilson.
Miss Mildred Waggoner spent the week end at the home of her parents, Mr. and Mrs. Roy Waggoner. Miss Waggoner attends the South river high school. She is a junior this year.
Paul Bendels of Drain was a business visitor here Saturday.
Arnold Wessela visited at the Albert Walker home in Seaside Sunday.
Those motoring to Reedport Sunday were Mr. and Mrs. Lovelace and Dr. K. K. Adams and family.
Mr. and Mrs. LeRoy Bryson and family of Cottage Grove were visitors at the D. R. Wakefield home Sunday.
Mr. and Mrs. Paul Levenhagen and son, Donson, of Long Prairie, were visitors here Saturday.
Paul Wessela and daughter

SALT LAKE CITY, PORTLAND RADIO LENGTHS CHANGED

WASHINGTON, April 8.—The Federal radio commission announced yesterday that the wave lengths of 17 "cleared channels" broadcasting stations will be changed on May 1 in order to improve reception.
The wave lengths of nine limited time and daylight operating stations will also be changed.
The shift, the commission said, is for the purpose of providing wider geographic separation between stations, thus reducing cross talk and other forms of interference.
The changes in cleared channel station include: KSL, Salt Lake City, from 1220 to 1090 kilocycles and KEX, Portland, Oregon, from 1180 to 1170 kilocycles.

SONNENBERG BEATS CANTONWINE AGAIN

(Associated Press Leased Wire)
SEATTLE, Wash., April 8.—Gus "Dynamite" Sonnenberg, world's wrestling champion, added Howard Cantonwine of Des Moines, Iowa, to his list of victims for the third time here last night.
The champion scored his first fall in the fourth round with his famous flying tackle and the second fall in the sixth with a body slam. Cantonwine attempted to defeat the titleholder at his own game, diving at him eighteen times, but failed to connect solidly. Sonnenberg used his flying tackle seven times.
John Frestberg of Indianapolis defeated "Moose" Norbeck of Everett, Wash., with a body slam. Norbeck was unable to return for the last round.
Sonnenberg meets Ted Thye in Portland Wednesday night.

TODAY'S MARKETS

(Associated Press Leased Wire)
PORTLAND, April 8.—Because of increasing supplies as compared with the demand, the butter market has developed a weak tone and a reaction in price would not be surprising. Current quotations were declared to be out of line with the general situation. Butter in storage was said to have reached large proportions.
The egg market was steady with prices unchanged and with supplies plentiful.
Reviewing the fruit and vegetable situation, Portland buyers of the United States department of agriculture say:
"Cauliflower was firm with considerably lighter supplies and practically no competition from California. Roseburg's loading is limited to about one carload daily, and the deal is expected to terminate soon. Buyers and shippers are concerned. Sales to retailers

SPECIALIZED TREATMENT
16 years spent in treating Rectal and Colon conditions.
Naturally, from so long and varied an experience in treating Hemorrhoids, Colitis, Piltula, Constipation and other Rectal and Colon conditions the success of our non-surgical methods is proved beyond all doubt. However we make a very remarkable GUARANTY which is explained in our FREE book. Write, phone or call for it today.
Dr. CHAS. J. DEAN
RECTAL AND COLON CLINIC
DEAN BLDG., OPP. COURTHOUSE
FIFTH & MAIN, PORTLAND, OREGON
TELEPHONE ATWATER 2061
AFFILIATED OFFICES
SEATTLE, SAN FRANCISCO, LOS ANGELES

SAVE ALPINE LABELS
for valuable premiums
Now you get silver, aluminum ware, table linen, curtains, jewelry, toilet sets, sporting goods and toys—absolutely free—in exchange for Alpine Milk labels.
In coffee—on fruits and cereals—use Alpine Milk for its rich, creamy flavor. Whenever your recipe calls for milk—use Alpine. Note the finer flavor, the smoother texture.
Keep a supply of Alpine Milk in your pantry—always. No fear of spoiling in the unopened can. Buy six cans today from your grocer and be sure to save the labels. Mail the coupon below and we will send you our Free Premium Folder describing over 275 beautiful and practical premiums given away for Alpine labels.

MAIL COUPON FOR FREE Premium Folder
ALPINE MILK, Premium Dept. 1065 Mission St., San Francisco, Cal.
Please send me, free, your illustrated Premium Folder describing over 275 fine premiums I can get for Alpine Milk labels.
Name _____
Address _____
City _____ State _____

Beet sugar \$5.10 cwt.
No. 1 flower...
No. 2 flower...
No. 3 flower...
No. 4 flower...
No. 5 flower...
No. 6 flower...
No. 7 flower...
No. 8 flower...
No. 9 flower...
No. 10 flower...
No. 11 flower...
No. 12 flower...
No. 13 flower...
No. 14 flower...
No. 15 flower...
No. 16 flower...
No. 17 flower...
No. 18 flower...
No. 19 flower...
No. 20 flower...
No. 21 flower...
No. 22 flower...
No. 23 flower...
No. 24 flower...
No. 25 flower...
No. 26 flower...
No. 27 flower...
No. 28 flower...
No. 29 flower...
No. 30 flower...
No. 31 flower...
No. 32 flower...
No. 33 flower...
No. 34 flower...
No. 35 flower...
No. 36 flower...
No. 37 flower...
No. 38 flower...
No. 39 flower...
No. 40 flower...
No. 41 flower...
No. 42 flower...
No. 43 flower...
No. 44 flower...
No. 45 flower...
No. 46 flower...
No. 47 flower...
No. 48 flower...
No. 49 flower...
No. 50 flower...
No. 51 flower...
No. 52 flower...
No. 53 flower...
No. 54 flower...
No. 55 flower...
No. 56 flower...
No. 57 flower...
No. 58 flower...
No. 59 flower...
No. 60 flower...
No. 61 flower...
No. 62 flower...
No. 63 flower...
No. 64 flower...
No. 65 flower...
No. 66 flower...
No. 67 flower...
No. 68 flower...
No. 69 flower...
No. 70 flower...
No. 71 flower...
No. 72 flower...
No. 73 flower...
No. 74 flower...
No. 75 flower...
No. 76 flower...
No. 77 flower...
No. 78 flower...
No. 79 flower...
No. 80 flower...
No. 81 flower...
No. 82 flower...
No. 83 flower...
No. 84 flower...
No. 85 flower...
No. 86 flower...
No. 87 flower...
No. 88 flower...
No. 89 flower...
No. 90 flower...
No. 91 flower...
No. 92 flower...
No. 93 flower...
No. 94 flower...
No. 95 flower...
No. 96 flower...
No. 97 flower...
No. 98 flower...
No. 99 flower...
No. 100 flower...

Get Ready Now
Cut Your Hay and Your Feed Costs at the Same Time.
Order your Papec cutter in advance and save money. The only cutter with the real hay feed.
Special, Used Disc \$30.00
Vaughn Garden Tractor 90.00
Farm Bureau Cooperative Exchange
Roseburg Myrtle Creek Oakland
AGENTS FOR
L. & H. Electric Ranges John Deere Plow Co.
Hood River Spray Co. Hoosier and Milwaukee Pumps
Sutherlandin Spray Co.

DR. DEAN B. BUBAR
OPTOMETRIST
Specialist in the fitting of Glasses
116 Jackson St.
Chiropractor
DRUGLESS HEALTH CENTER
"Complete Health Service"
Mineral Vapor Baths
327 Cass Phone 491



Better and here's why
THERE WAS SOMETHING of good fortune in the discovery of Camel's inimitable blend. Nothing like it has ever been known. . . . But in addition to the blend, another reason for Camel's superiority is the willingness of its manufacturers to put money into tobacco quality. Money to buy the choicest tobaccos grown, Turkish and Domestic—mild, mellow, fragrant, perfectly cured tobaccos that mingle their aromas in the Camel blend to make a truly wonderful smoke.
No better cigarette can be made than Camel. But the cost to you is no greater.
Don't deny yourself the luxury of
CAMELS

© 1930, R. J. Reinfolds Tobacco Company, Winston-Salem, N. C.

The Roseburg National Bank
Roseburg, Ore.
You Will Be Proud
To have an account with this bank steadily growing at compound interest. Come in now, open an account and get your bank book.
4% Interest Paid on Savings Accounts.