

FLEXIBLE ENGINE IN NEW DODGE SIX

Racing car, airplane and high-compression automobile engines are the common run of motors that the thoroughbred race-horse has to the ordinary man. They are decidedly "hefty," but to develop the fine performance of which they are capable, their nerve systems must be kept in good order.

The nerve system of a gasoline motor is its ignition. This supplies the vital spark of energy which sets it life. The type of ignition system that suffices for the ordinary low-compression motor would not suffice for the high-compression motor any more than the nerve system of the ordinary work horse would do for a Man O' War.

One of the most highly developed points on racing cars is the ignition system, graphically illustrated in the splendid automobile shown at Indianapolis. Spark plugs that suffice for some passenger cars would go to pieces at Indianapolis, and the high-compression engine is a development of lessons learned at that famous track. Out of these "Speedway" classics have emerged the modern high-compression, super-performing motors.

Naturally, with the greatly improved performance and power output developed from the high-compression engine, have come other improvements. The spark plug is one of them.

One of the most recent improvements in the Dodge cars has been the adoption of the metric spark plug in place of the 7-8-inch type usually employed. The change was made because the new plug permits the motor to meet both high and high-speed driving conditions better.

The metric plug, so called because of its metric dimensions, is smaller in diameter than the standard 7-8-inch type. It is used practically universally in aviation practice, and is coming in rapidly for the more highly-developed automobile engines, particularly of the high-compression, high-efficiency type.

Another feature of this plug is its cooling in operation, the smaller shell enabling the cooling water to be brought closer to the electrodes. The Dodge combustion chamber is scientifically shaped to afford the smallest uncooled area, and this reduction, together with the fine electrical characteristics of the metric plug, has contributed to the improved general performance.

Today by national headquarters of the American Automobile Association on the basis of every indication that the total number of motor fatalities for 1929 will exceed 27,000, and thereby establish a new high mark.

The national motoring body, which has advanced a safety-responsibility plan as a means of controlling the reckless driver, says that the mounting toll of deaths stands as a challenge to a progressive nation. The A. A. A. plan has as its basis stringent driver's license laws; revocation of the permits of those found guilty of serious violations of the motor vehicle laws; with the suspension of permit remaining in force until the guilty party has established proof of financial responsibility against possible future injury to persons or property. In addition, a person against whom a judgment has been rendered, will be denied the use of the highways until it is liquidated and financial responsibility established as a future guarantee.

"The trend of fatalities from motor vehicle accidents in ratio to car registrations," said the A. A. A., "was decidedly downward from 1917 to 1928, but since that time it has suddenly turned upward. There is every indication that a high mark for the past decade will be reached this year, despite the fact that the 1929 automobile is better equipped for safety than any car in the history of the industry."

"Moreover, this upward trend comes at a time when the percentage of increase in motor vehicle registrations is equal to the lowest on record. In addition, there has been more attention given to traffic control within the past five years than at any time in history. The problem has occupied the major attention of state and municipal authorities. Police forces have been augmented with additional men; state highway patrol units have been established; traffic lights have been placed by the thousands; legislators have advanced law after law, yet the gigantic toll of deaths from motor vehicle accidents continues to increase."

The statement continues: "The subject of safety is one of the dominant problems confronting the American people. Loss of a single life in a hurricane attracts wide attention, while an annual toll equivalent to the population of a progressive city is wiped out annually, with hardly more than passing interest."

"The A. A. A. safety-responsibility plan represents months of study on the part of nationally-known traffic experts. Not only has already enacted the plan as a whole in the states of what states who substantial traffic laws have been adopted in New Jersey, Rhode Island, Connecticut, California, Iowa, Maine, North Dakota, Wisconsin and Vermont."

NEW NASH MEETS PUBLIC APPROVAL

KENOSHA, Wis., Oct. 16.—American motorists—at once the most expert and the most critical mechanical audience in the world set their seal of unqualified approval on the advanced engineering features and design revealed last week in the national introduction and display of the new Nash "400" series cars for 1930.

Experts and car owners in every part of the country flocked to Nash salesrooms to examine the great new line, and it was significant of the overwhelming public interest that always attends announcements made by C. W. Nash that they studied mechanical details of the new twin-ignition eight, the twin-ignition six and single six groups as thoroughly as they did the beautiful new lines and advanced styles which mark the salon bodies for the coming year. They found refinements and appointments in the new cars which create a standard of quality far beyond anything in the field, and gained a new conception of the motoring luxury at moderate cost which is a foundation building stone in Nash success.

Features of particular interest to the motor-wise visitors, according to telegrams received at Nash headquarters by the daily stream of admirers who came pouring in from the eight, carburetion refined to high performance peaks, the advanced Nash trend in cable operated, internal expanding four-wheel brakes which makes cars of the new series a motoring standard of tomorrow, all found sincere appreciation and approval from the motoring public.

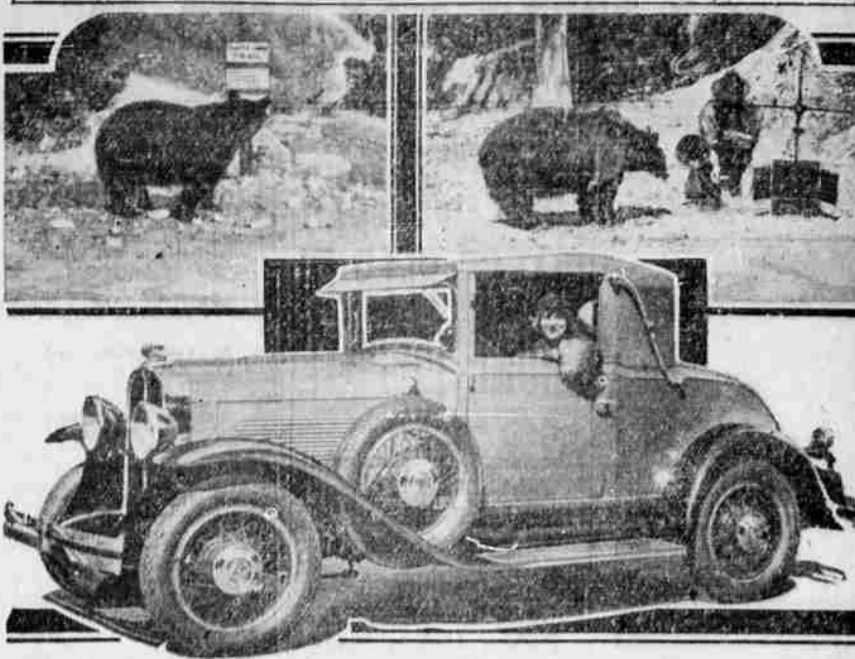
One of the most stirring demonstrations of public acceptance on record is indicated by official reports already received from Nash dealers and distributors covering the preliminary dealer meetings and public openings which made automobile history through the last week end. Random sections of some of the early Nash "turns" show record-breaking enthusiasm over the new cars in Canada and throughout the east and middle west, and the promise of continued high success for Nash products the world over.

PROSECUTION OF RECKLESS DRIVER

WASHINGTON, D. C., Oct. 16.—Vigorous prosecution of the reckless driver, with steps to entirely eliminate this criminal minority from the streets and highways, offers the only means of curbing the mounting toll of fatalities from motor vehicle accidents.

This statement was broadcast

National Park Haven for Bears



A Pontiac sport coupe recently visited Yosemite National Park to obtain these photographs of the bears who make their home in this protected area. Because of the restrictions placed on hunting, the bears are quite tame and can be seen in all parts of the valley. They are a source of never-ending interest with their antics and tricks.

State Board for Vocational Education with Mr. O. D. Adams as its director and executive officer.

This is the fourth year that "local trades" has been offered by the local schools. A large number of boys have been placed on jobs and given training that has enabled them to continue in their chosen trade, usually on the same jobs as they originally obtained.

DINING SERVICE NEW BUS LUXURY

Motor coaches with facilities for sleeping and dining enroute were unknown until the advent of the Pickwick nitcoach, the world's only compartment sleeper bus and a product of Los Angeles' draughtsmen and artisans, it is stated by Charles F. Wren, president of the Pickwick corporation.

Two of the big 25-passenger sleepers have been in service between Los Angeles and San Francisco since last June 26th.

"Travelers making their first trip on the nitcoaches invariably are agreeably surprised at the variety of luscious viands listed on the menu," said Mr. Wren. "More than fifty different items are listed, ranging from steaks and other meats to fresh vegetables and fruits in season and inviting selection of pastries."

One of the late model nitcoaches sent to Atlantic City for exhibition at the annual convention of the American Electric Railway association proved the feature of the exposition, according to word from Dwight Austin, designer and superintendent of Pickwick's body department.

MOVIE DAREDEVIL SLIDES TO DEATH, INJURES WATCHERS

(Associated Press Local Wire)
CHICAGO, Oct. 15.—Italy Cimono, 23, New York daredevil, fell to his death while sliding down a rope from the 44th floor of the new Civic Opera building today, and his fall injured several spectators, one of whom was thought to have suffered a broken neck.

Cimono was performing for moving picture cameras.

Cimono landed half way between Washington and Madison on South Wacker drive. He struck the base of the elevated structure as he landed.

Hundreds of workmen had gathered to watch Cimono's feat. He was performing without pay, and a few seconds before the accident moving picture operators had photographed him for making films.

Cimono had proposed to slide down the rope head downward, but had difficulty trying to get his position. Each time he flung his feet upward they traveled back to normal position, until he began slowly somersaulting in an attempt to turn himself upside down.

26 STUDENTS OF ROSEBURG ENROLL IN TRADES COURSE

Twenty boys and two girls, students of Roseburg high school, are now employed on a half-time basis in trade work under the plan of the Smith-Hughes trade and industrial course, called "local trades," offered by the Roseburg schools, making possible the plan of these students as apprentices in their chosen vocations.

Under the "local trades" plan, federal and state funds are used to pay half the cost of offering apprentice training to qualified students who wish to enter trades represented locally. The course is part of the curriculum offered by the high school and credit is given for the work. Supervision of the student apprentices is vested in T. T. Mackenzie, the coordinator, a member of the high school faculty.

The choice of the student governs the placement of an apprentice in any trade work. In most cases, the student finds and secures his own position and then applies for registration in the course and credit. If there is any case of objection the coordinator offers such guidance information as may be needed and in many cases suggests positions which might be obtained.

After registering in "local trades" the boy or girl spends half of each school day on his or her train job. During this period the fundamentals of the trade are learned under real job conditions. Related and technical information is taught by the coordinator in regular conference periods at the high school.

Trade district agencies are cooperating to make the course possible. The Federal Board for Vocational Education, under the provisions of the Smith-Hughes law, matches dollar for dollar the funds offered by the state and the local school district. The fourth agency is the local employer who takes the apprentice into his business for practical training. In most cases, the employer retains the apprentice as a permanent employee after graduation.

Federal and state surveys are used to subsidize courses in trades and industries, agriculture and home economics in more than thirty-five Oregon cities. Disbursement of this money and supervision of the courses is vested in the

TRAVELING CHAPEL FOR NOTRE DAME GRIDDERS

(Associated Press Local Wire)
SOUTH BEND, Ind., Oct. 15.—A chapel has been added to the traveling equipment of the football team of the University of Notre Dame, so the players will not miss Sunday services during their long trips about the country.

The "traveling church" was built some time ago for the Baltimore & Ohio railroad for use of the road's ecclesiastical guests. Notre Dame made use of it last week while returning from Baltimore, where Navy was defeated. It was said a priest will accompany the team and by special permission will hold services in the chapel car.

TWO APPOINTMENTS

(Associated Press Local Wire)
WASHINGTON, Oct. 15.—Appointment of Benjamin H. Littleton, of Tennessee as chairman of the board of tax appeals, and Representative Thomas Williams of Illinois, as members of the United States court of claims was announced today by President Hoover.

THE BIRTHDAY OF A GREAT YEARLING

The General Petroleum corporation and the huge family of 4500 dealers delivering its products to the motoring public of the Pacific coast are celebrating this month the birthday of what is perhaps the greatest "yearling" in the history of the gasoline business, for Violet Ray gasoline, widely known General product, is just one year old.

Announced a year ago as the result of painstaking effort in chemical and refining research, Violet Ray gasoline has won more than a million regular users and has scored a great triumph because of the fact, according to corporation executives, that it is the only true, natural anti-knock gasoline manufactured for general consumption today.

Last week in celebration of the great record set by Violet Ray, Mare Leh, assistant division manager of the General Petroleum corporation, sent congratulations to every member of the huge family distributing and retailing Violet Ray in Oregon, saying in part:

"Because of the great part every individual in the Oregon division has played in building the great sales record of our year-old product, we are taking this opportunity to extend hearty thanks to you and congratulations to everyone in our first great birthday party."

"Violet Ray gasoline now plays an important part in the welfare, pleasure, and business life of the entire Pacific coast region. It is registered indelibly in the minds of more than a million regular users, and thousands more are joining with us to make every future birthday a greater celebration."

CHRISTIAN WORK EDUCATION TOPIC AT MEETING HERE

The last of a series of ten conferences on Christian education held in Washington and Oregon opened here this afternoon at 2 o'clock in the local Presbyterian church.

Dr. William Ralph Hall, of Philadelphia, representative of the board of Christian education, is in charge of the conference. He is assisted by Miss Steers, also of Philadelphia, who spoke to the women at 2 o'clock, and Dr. Walter L. Van Natta, field representative of educational work for the state of Oregon.

Every Car Owner Should Know about VESTA PLATE- LOCKING ISOLATORS

This is the only battery with the plates held firmly in place—LOCKED SOLIDLY—to minimize plate buckling and short-circuiting.

COME TO BATTERY HEADQUARTERS
PERCY CROFT
Highway Service Co.

VESTA
Plate-Locking
ISOLATOR
BATTERIES
only VESTA has Isolators!

Your Attention!

Mr. Prune Grower

You will need prune pickers' tickets when the harvest starts. We are prepared to turn out rush orders of any quantity.

While you're in, better order a supply of envelopes and letterheads. We'll show you samples.

Roseburg News-Review
Commercial Printing Dept.

CONTRACTOR METZGER VICTIM OF PNEUMONIA

E. R. Metzger, local contractor who built the new courthouse in this city, will not be able to attend the dedication ceremonies next Saturday because of illness. He is a patient at Good Samaritan hospital, Portland, suffering from pneumonia developed from a cold taken while he was engaged in road work at Swim, Oregon. Announcement of his illness was made to the celebration committee by Mrs. Metzger.

A number of delegates from the southwest Oregon Presbytery are in attendance, representing churches as far south as Ashland and from the coast.

The conference is for better understanding of the work of Christian education, and should be of special interest to pastors, superintendents, teachers and all leaders of youth.

THIS COUPON GOOD FOR 20 CENTS

This coupon will be received at its face value, if clipped out and used as payment on the rent of two books each time you subscribe for magazines at our place of business. This offer may not appear again but it will always hold good. Fiction Library, near Junior high school building, 302 West Washington street, Roseburg, Oregon.—Adv.

SILK ANKLET SOCKS
New styles in white, pink, blue, tan, etc. Dandy fine silks with colored band tops. Only 35c pair at Carr's.—Adv.

Are you a real music lover? Then you will enjoy the concert by the Portland String Quartette Thursday evening at Heimline home. Tickets \$1.—Adv.

The only car

listing for less than \$1000

which offers all these

IMPORTANT FEATURES

Note the list of features below. These are features which are combined in the Pontiac Big Six and in no other car listing for less than \$1000. Come in and let us show you what these features mean to you. And bring your present car for our liberal appraisal.

- 1 A 200-cubic-inch L-head engine.
- 2 The Harmonic Balancer.
- 3 The G-M-R cylinder head.
- 4 The cross-flow radiator.
- 5 Automatic temperature control.
- 6 Fully counter-weighted crankshaft.
- 7 Interchangeable bronze-backed main bearings.
- 8 A 1 1/4-inch carburetor.
- 9 A gasoline pump.
- 10 Expansion-type piston pins.
- 11 Full-pressure lubrication.
- 12 Internal-expanding four-wheel service brakes.
- 14 Special moulded, non-sneak brake bands.
- 15 Special Bodies by Fisher.
- 16 Flaring fenders—70 inches across.
- 17 High radiator of distinctive design.
- 18 A variety of popular colors.
- 19 Turned interior fittings.
- 20 Fisher VV windshield.
- 21 Adjustable driver's seat.
- 22 Coincidental ignition and transmission lock.
- 23 Individually mounted instruments, including gasoline gauge.
- 24 Foot-controlled headlights.
- 25 Small wheels, ten massive spokes.

PONTIAC BIG SIX

PRODUCT OF GENERAL MOTORS

\$745

Prices, \$745 to \$895, f. o. b. Pontiac, Mich., plus delivery charges. Bumpers, spring covers and Lowjoy shock absorbers regular equipment at slight extra cost. General Motors Time Payment Plan available at minimum rate.

Consider the delivered price as well as the list (f. o. b.) price when comparing automobile values... Oakland-Pontiac delivered prices include only authorized charges for freight and delivery and the charge for any additional accessories or financing desired.

C. A. B. Pontiac, Mich.

Roseburg Motor Company

111 N. Rose Phone 100

We're mighty proud of the friends these tires make for us



Around here, too, more people ride on

GOODYEAR

Tires than on any other kind.

SERVICE THAT COMPLETES YOUR SATISFACTION

Helping you to pick the most economical type tire for your needs—proper mounting on cleaned and straightened rims—then, watching your tires for you the year around to help you get all the mileage built into them—that's our service!

Healy-Wood Tire Co.

AT

Ned Dixon's Super Station

On the Highway Phone 104 Stephens and Mosher