

EASIER HANDLING
GREATER SPEED IS
WHIPPET FEATURE

Ease of handling and speedy performance in traffic, besides economy in operating costs, have played an important part in the record reception accorded the Superior Whippet four this year, according to reports received by the Willys-Overland company dealers.

Of course, the present model is somewhat heavier and roomier than in the trade. Although no drastic changes have been made in the Whippet four rate of top speed and quicker pick-up that has made it a dominant sales factor in the trade.

FARMS ENTITLED
TO BETTER ROADS

WASHINGTON, D. C., Aug. 20.—With 23 per cent of the nation's motor vehicles owned on farms, congress can render no greater aid to the farmer than by speeding up road building to enable the agricultural interests to market their products and further eliminate the isolation of rural life.

The national motoring body declared that an increase in the annual Federal Aid appropriation from the present amount of \$75,000,000 to \$125,000,000 will enable the states to more quickly complete their primary highway systems and aid in the building of secondary or rural roads.

The AAA pointed out that the progress already made in constructing roads has done much to improve the standards of farm life and allow the farmer to overcome the isolation which once surrounded his home.

"At the same time," says the statement, "the farmer has been brought in closer touch with public affairs and is taking a more active interest in demanding his rights as a citizen. An indication of this is seen in the fact that rural mail routes are now in excess of 1,275,000, while five families are served per mile with an average of 3.810 pieces of mail handled per mile."

The AAA said that modern highways have already made available to the rural resident school facilities equal to those found in cities, through consolidation of the numerous one-room schools; contributed to the prosperity of the farmer by enabling him to deliver his products at nearby markets or sell them at his door, and lowered the cost of transporting "cash commodities."

The statement continues: "At the close of 1928 there were 24,493,124 motor vehicles registered in the United States and 5,439,000 of these were on farms. Texas led the list with 362,600 farm-owned motor vehicles, while Ohio, Illinois, Iowa, Pennsylvania, Wisconsin, New York, Minnesota and Missouri trailed in the order named. It is also significant that the larger proportion of these cars are used for work in connection with the farm."

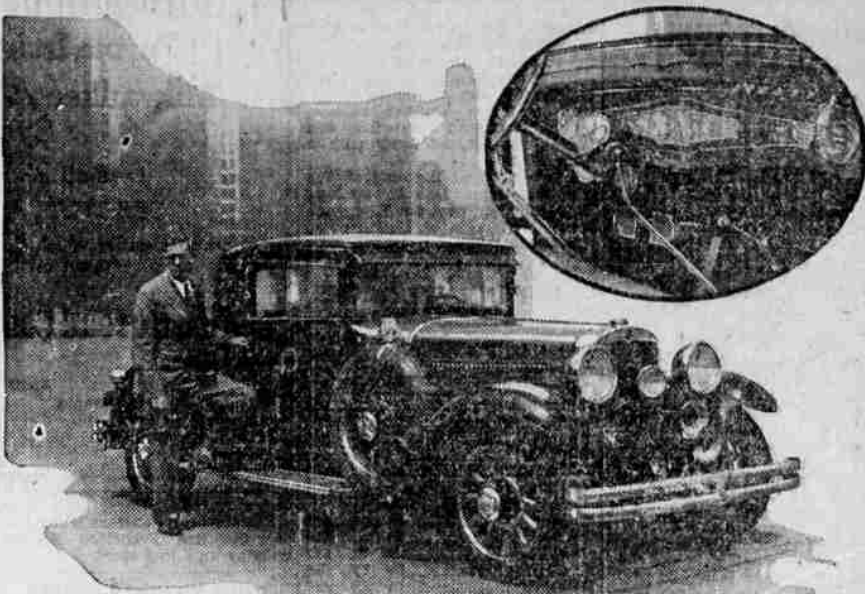
"The need for improved roads to serve the farmer is seen by the fact that at the outset of 1928 there were 43.1 per cent of the farms located on unimproved dirt

TOOK ADVICE
OF HER MOTHER

Praises Lydia E. Pinkham's Vegetable Compound

Wetmore, Colo.—"When I was married 14 years ago I was in bad health for a couple of years and when I tried to do anything I would get tired and worn-out. I have taken Lydia E. Pinkham's Vegetable Compound off and on all these years and have recommended it to hundreds of women. I have given birth to six children and have taken the Vegetable Compound as a tonic before child-birth. It has done me worlds of good. My mother had taken it several times and she recommended it to me."—Mrs. JUNE BLASSEL, Wetmore, Colorado.

"400" Pathfinder Hits Long Trails



From a flying start in the beautiful new Grant Park plaza drive on Michigan Avenue in Chicago, this perfectly equipped "400" Advanced Coupe is eating up thousands of miles of new vacation trails for the Chicago Motor Club. Jack "Million" Graham, field chief for the touring bureau, is at the wheel of the car whose twin-ignition motor and other exclusive Nash features, twin speedometers and odometers, altimeters and specialized road sur-

vey instruments, make it possible to accurately log and record all highway conditions while traveling 50 miles an hour. Graham has driven his four Nash cars nearly a half million miles in road logging service. The three previous machines covered well over 100,000 miles each before being relegated to other club uses. Inset is the instrument board with its special survey equipment. It contains many of the special survey instruments.

roads and 31.3 per cent on improved dirt roads. Only a small percentage were on gravel or surfaced highways. "With such a situation prevailing, Congress can hardly afford to longer ignore the need for an intensive effort to increase the progress of road building throughout the United States."

FRONT SEAT ADVICE

When night comes on, wipe off your headlight lenses. They can collect and hold enough dust from a day's driving to cut down illumination materially.

If you are in the habit of nitting it up on the road, you have to put oil in the crankcase oftener than if you stick to a conservative thirty-five miles an hour. The faster you go, the hotter your engine becomes and the more oil it burns up.

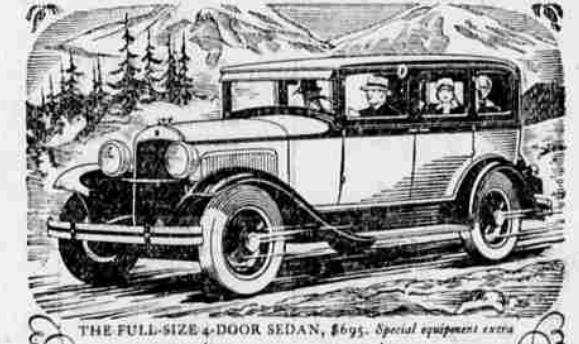
Spark plug caps, breaker points and ignition cables should be checked periodically—about every 1,000 miles if you want to be sure they are always right. They are among the things that it's easy to forget.

If tires are over-inflated, their walls are likely to puncture in striking sharp stones or other obstacles. If their pressure is too low, they make steering difficult—and wear out much sooner than if the pressure is right.

And now we'll have the new big band song, "Hanging Out With the Bunch."

Eat barbecue sandwiches and live forever. Brand's Road Stand.

CHRYSLER MOTORS PRODUCT



THE FULL-SIZE 4-DOOR SEDAN, \$655. Special equipment extra.

Plymouth excels in motor car Essentials

THE four things to consider most in selecting a motor car, are: The body, wherein you ride; the engine, which makes the car go; the brakes, on which your safety depends; the first cost and the economy of operation and maintenance affecting your purse. ROOMIEST BODIES Plymouth bodies are full-size—out-measuring the entire low-priced field in leg-room, elbow-room and head-room. SMOOTH, QUIET ENGINE The Plymouth power plant follows throughout the basic principles of Chrysler engineering—with Chrysler-like results. SURBEST, SAFEST BRAKES The full-size Plymouth is by far the safest low-priced car. It is the only low-priced car with equalized Chrysler weatherproof four-wheel hydraulic brakes. LOW UPKEEP COST The Plymouth is America's lowest-priced full-size car. Its simple, rugged and efficient engine uses gasoline sparingly.

PLYMOUTH J. O. NEWLAND & SON Cass and Stephens Streets Roseburg, Oregon Phone 458

PRICE ON NASH GETS BIG SLASH

KENOSHA, Wis., August 21.—(Special)—One of the most important announcements of the current automobile year came today when C. W. Nash, president of The Nash Motors company, notified his national sales organization of sweeping reductions in the retail prices of the famous Nash '400' series cars.

Effective August 12, he declared, the motoring public will benefit by reductions on "400" models, ranging as high as \$300 a car. This drastic lowering of prices on the cars whose international popularity has broken all Nash records will affect models in the two popular price groups—the advanced six and the special six series. The exact reductions on each model will be announced locally.

This big Nash price reduction, which comes as a welcome surprise to motorists the country over following the brilliant success of these new types, twin-ignition and advanced design cars, is made primarily to clear the manufacturing decks for the introduction of new Nash models later this year, according to company officials. The new cars, they declare, will carry prices higher than those prevailing before the present reduction. Thus the buying public is offered triple benefits in securing new Nash cars before the arrival of the 1930 models.

Buyers may avail themselves of the finest type of automobiles ever developed by the great Nash

factories and cars which have incorporated in them the advanced engineering principles which will also feature the year's new models. They are given the opportunity to write off the considerable sums in depreciation which usually affect current models when new ones are announced; and they may secure automobiles far in advance of their field at costs which strike a new low note in automobile merchandising. In the estimation of automotive engineers, these Nash reductions represent the highest automobile values known in America motor car history.

SERIES EDUCATIONAL TALKS TO BE BROADCAST

The Oregon state board of examiners in optometry has arranged to broadcast a series of educational programs over radio station KGV, according to word received by Dr. H. C. Church of this city. These talks will be featured every Friday evening at 6:25 o'clock and are expected to prove highly educational and interesting.



This New Truck will Out-Pull Out-Climb and Out-Perform

All Others of Similar Rating Under Full Load

We have a new truck here at our place that is entirely different from any other light truck on the market—it has 6 speeds forward and 2 reverse. And the difference shows up mighty plain when you run up against steep grades, plowed ground, deep sand, soft meadows, ditches, snow, etc. The SIX-SPEED SPECIAL is ahead of the others because it is built to go ahead on just the kind of work that folks around here have to do.

It is an ideal truck for the farm, and it fills the bill with merchants, too. Anybody who has to haul loads over good roads and bad will like the SIX-SPEED SPECIAL.

We are demonstrating it every day, so don't feel backward about asking us to show you what this truck will do. It backs up every thing we say about it—and its low price will surprise you.

C. J. WALKER Rose Garage Roseburg, Ore.



WORLD USES MORE FORDS THAN EVER

World production of Ford automobiles and trucks for July was the largest for that month in the history of the Ford Motor company, according to announcement by the company. All records for retail deliveries to customers also were broken.

The company also announced that requirements for cars during August is placed at considerably more than 200,000 and that every effort will be made to meet this demand.

Production of Ford cars and trucks in the United States during July totaled 180,804 and for the rest of the world, 15,791, making a grand total of 196,595. Retail deliveries to customers in the United States alone totaled 179,575 for the month. This was more than a third of the total car and truck business of the United States.

While the production curve of the Ford plant at River Rouge has been maintained at fairly steady volume the year round, July always has been the low point in the curve. In the striking increase in volume over the same months in previous years and 150,000 unfilled orders on the books of Ford dealer organizations, Ford officials foresee one of the busiest autumns in the history of the company.

The plant is now turning out cars as fast as the summer schedule permits. The company now employs 104,000 workers at the Rouge plant where most of the manufacturing has been concentrated since the removal of equipment from the Highland Park plant.

The popularity of the new model A has extended to the remotest parts of the world and the capacity of all foreign assembly plants is being taxed to the limit, company officials said.

BOY ADMITS SETTING REFORESTED LAND FIRE

(Associated Press Local Wire) GRANTS PASS, Ore., Aug. 20.—State forestry office agents today obtained a confession, they said from a farmer boy, 14, that he set

Will Brave the Falls



With complete self assurance Mrs. Susan D. Grove, of Hagerstown, Md., 63-year-old mother of five children, announces that she plans to take a trip over Niagara Falls in a rubber ball. She further adds that she isn't one bit afraid of her coming venture, and anticipates a successful journey.

The fire which recently destroyed seventy-five acres of reforested area in the Williams creek section. The boy, whose name was not disclosed, because of his youth, was taken to the office of the district attorney and reprimanded. He was "sentenced" to make a tour of the burned-over areas, the agents said, as an object lesson of the results of his act.

Camp at Idlewild Park.

Chiropractor DRUGLESS HEALTH CENTER "Complete Health Service" Mineral Vapor Baths 327 Cass Phone 491

EXECUTIVES OF OIL CO. WILL BE HERE THURSDAY

William F. Humphrey, president of the Associated Oil company, F. M. Rowles, domestic sales manager, B. I. Graves, manager of fuel oil, cargo and export sales, and a party arrived in the northwest, via Seattle, Monday morning, and will make an inspection tour of the Associated Oil company's holdings throughout the entire northwest.

LOCAL INSTRUCTORS ATTEND SUMMER SCHOOL

UNIVERSITY OF OREGON, Eugene, Aug. 21.—(Special)—The largest post-session summer school in the history of the University of Oregon is being attended this summer by Mrs. Golden Wioklum and J. A. Wioklum of Roseburg. The total enrollment is 316, nearly double that of any former post-session.

The large increase is attributed to the "floating university" trip on the S. S. Queen which took 165 students on a two-weeks' cruise of Alaska. In addition to this, however, the campus enrollment of 163 exceeds all previous enrollments.

1680 students attended or are attending the summer sessions conducted in Eugene and Portland and the post sessions. This is an

increase of 278 over last year's total enrollment. Post session will close August 30 with commencement exercises for those who have filled graduation requirements. This is the first time commencement has been held after the summer session, students having previously been held over until the regular June commencement.

Increasing attendance and interest in the university summer session promises to keep the Eugene campus active all the year around. The summer and post-session period virtually compose a fourth quarter.

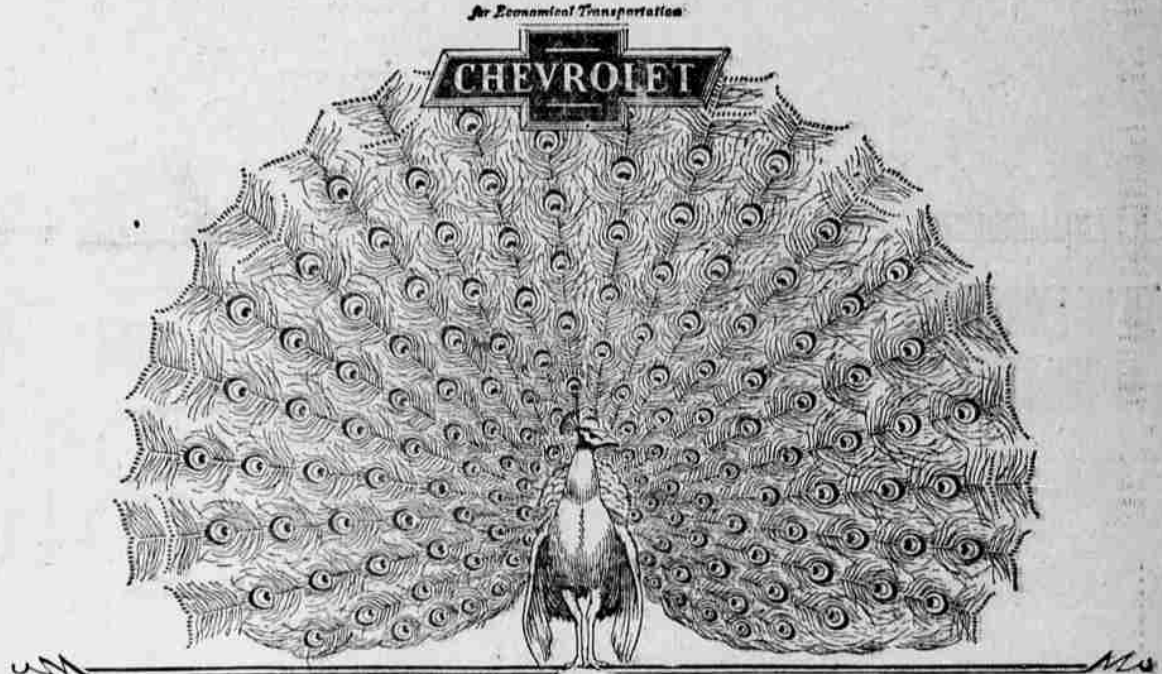
Walking products, 120 West Lane, Phone 177.

AT Brand's Gardens

It was four years ago this week that Brand's was opened as a little fruit stand 12 by 24 feet in size, with board shutters instead of windows. So this week, incidentally the best week it has ever had, is a sort of anniversary, and its Roseburg friends are invited to visit it again and enjoy its gardens and its lunches.

BRAND'S Pacific Highway 3 Miles North

Old Time Dance AT THE WIGWAM Wednesday, August 21 Music by the Whirlwind Orchestra



ANNOUNCING A VARIETY OF COLORS on the Chevrolet Six at no extra cost!

In keeping with the progressive policies that have carried Chevrolet to record-breaking heights of success—the new Chevrolet Six is now made available in a wide variety of colors at no extra cost.

Still further enhancing the beauty of the marvelous bodies by Fisher, these striking new colors give to the Chevrolet Six an order of smartness unapproached in any other low-priced car in the world.

And when you drive the Chevrolet Six, you will realize that its performance is equally as outstanding as its beauty. It flashes away at the traffic signal. It tops

the steepest hills with an abundant reserve of power. The steering wheel responds to your slightest touch. And the quiet, non-locking, four-wheel brakes are unusually quick and positive in action.

But most impressive of all, this six-cylinder car is available in the price range of the four, with economy of better than 20 miles to the gallon of gasoline! Thus anyone who can afford any automobile can now enjoy smooth six-cylinder performance!

Come in today. See this sensational Chevrolet Six in its smart new colors.

The Roadster, \$525; The Phaeton, \$525; The Coach, \$595; The Coupe, \$595; The Sport Coupe, \$645; The Sedan, \$675; The Imperial Sedan, \$695. All prices f. o. b. factory. Fiat, Mich.

COMPARE the delivered price as well as the list price in comparing automobile values. Chevrolet's delivered prices include only reasonable charges for delivery and financing.

HANSEN CHEVROLET CO.

Phone 446 Rose Street ASSOCIATED DEALERS COWEN'S GARAGE Yoncalla MONSON'S GARAGE Drain A SIX IN THE PRICE RANGE OF THE FOUR