

NORTH UMPQUA HAS NO EQUAL, WRITER FINDS ON JOURNEY

New Thrills for Anybody Who Makes Trip Hold Forth in Every Mile of Scenic Country

By HARRIS ELLSWORTH It was with no little misgiving that this writer accepted the invitation of Carl B. Neal, supervisor of the Umpqua national forest, to accompany him on a trip through the forest. The reluctance at making the trip was occasioned solely by one thing: The trip was to be made on horseback and the memory of the stiffness following the writer's last previous horseback trip, made at the age of 16, still lingered. Little will be said in the following lines regarding what the actual conditions was but those who read this and who have been through such an experience are welcome to draw their own conclusions.

The first leg of the journey through the forest was via a forest service jitney from Roseburg to Steamboat bridge. Major and Mrs. Scott and their companion, Sterling Young, are spending the summer in John Ewell's cabin and were at the Steamboat road camp Wednesday evening when we arrived. The Major and Sterling were going off down the river for some evening fishing and it was our good fortune to see the Major land a seven-pound steelhead while in a few moments after he made his first cast. He landed another shortly after. Fishing is mighty good in the North Umpqua river now. The trip really began in the morning.

North Umpqua Trail Beautiful The scenic or the beautiful might slightly mislead the North Umpqua trail. It is "just a river and haven't we seen plenty of rivers? The answer is that there is no river in the world like it and regardless of how many rivers or how much scenery any person may have seen, there are some brand new thrills for the eye on the North Umpqua between Steamboat and the Camas. White water, deep cut canyons, one can't describe it because every foot is beautiful and every foot it is different.

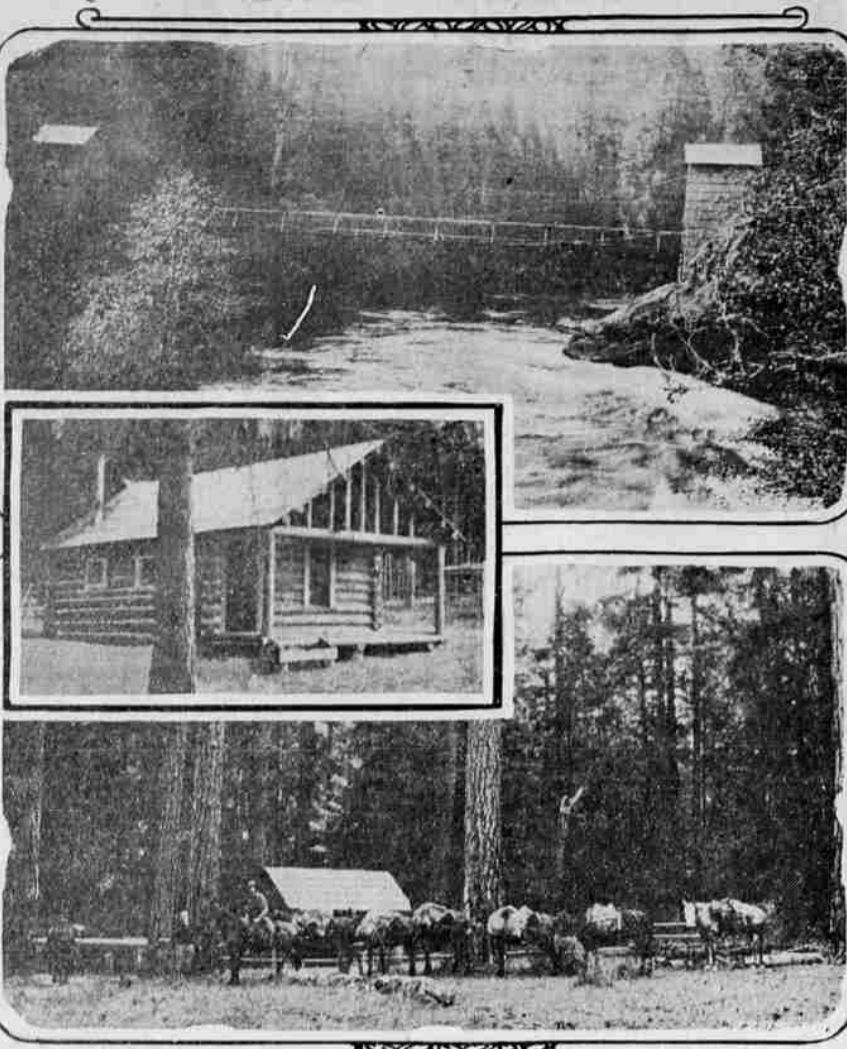
The forest service has neatly constructed ranger stations at strategic points in the forest. One of these is located at Hilber. We stopped for a short time here and Supervisor Neal took advantage of the opportunity to do some administrative work over the telephone. One cannot help having the notion that when he is deep in the forest he is away from and out of touch with civilized man, but nothing could be further from the fact. From almost any point in the forest it is possible to talk to and understand distinctly, any person who is within reach of a telephone anywhere. There are more than 500 miles of telephone line within the boundary of the Umpqua national forest. This phone system is no mere toy either. The lines are extremely heavy wire, well insulated, continue to give service even under the most severe strain. Most of the telephone lines are near the trails and the rangers carry portable telephone outfits that they can use in with at any point on the line.

Leaving Hilber, we continued up the river to the North Umpqua suspension bridge. There are other bridges. The trail to Big Camas which connects with the road from Diamond Lake, crosses this bridge and climbs on up to Oak Flats. We did not cross but continued up the river climbing at least at once up to Pine Trench. A more sublime setting no group of pine trees ever had. As we ascended there high above the rest of the forest, ending out to the skyline. Supervisor Neal said: "I love this spot and could never bear to think of loggers' axes attacking these trees." You would agree with him, too. There they are, several hundred majestic pines standing high above the rest of the forest. The ground is nearly level, sloping fairly quickly away on all sides at the base and it is carpeted with soft grass. There is a splendid hot cold spring up there and might welcome it is to the traveler.

On we went, past the gold springs, past the famous Indian cave where the paintings done by Indians a century ago are still plainly visible—on and on, away from the river now. We scouted our way until we reached the Mountain Meadows ranger station or "shelter" as it is called by the forest service people.

Joe Allen of Tillamook and John Diet from Canyonville were camped at a little spring on the Upper Mountain meadows and we made camp near them. First Night Spent in Mountain Meadows Do not imagine for a moment that traveling with a pack train through the Umpqua forest is filled with hardships. Nothing could be further from the fact. Our camp supper for instance consisted of chicken, canned vegetables, Boston brown bread, steamed cod fish and for dessert, canned grapefruit and chocolate eclairs. That, however, is but a fraction of the story regarding the luxuries of camp life in the forest. As this writer rolled off his horse at the end of the 30 miles covered that first day, he mumbled something about wishing for a nice hot bath to take some of the kinks out of his muscles. Supervisor Neal ever the perfect host, hearing the implied criticism of the accommodations offered, rolled at once that the forest had anticipated such needs on the part of weary travelers and called this writer a handful toward the river and there, flowing right out of the side

UMPQUA NATIONAL FOREST LURES LOVERS OF OUT-OF-DOORS



Scenes along the North Umpqua river east of Roseburg. Above—Steamboat bridge spanning the North Umpqua. Inset—Standard shelter provided for rangers in the Umpqua national forest. Below—pack train in forest. Pictures by courtesy of United States forest service.

of the hill and into a perfect bathtub carved from the soft rock was a trickle of clean hot water—the famous "Ladlan Bathub" of the North Umpqua. A level shelf surrounds the bathtub for several feet and the water is exactly the right temperature for a nice hot bath. Welcome services? Decidedly, yes.

Friday we forded the North Umpqua at the hot springs and crossed Thorn Prairie arriving at the forest service road camp on Lake creek at noon and spent the rest of the day at the camp.

Saturday's trip was by far the most interesting of the summer. In addition to the summer home population and in addition to the thousand or so cars of campers, is a fine modern lodge with a total maximum capacity of 200 persons. The lodge is well managed and is first class in every respect.

The sporting and recreational advantages of Diamond Lake are almost without limit. You can rent a rowboat, a power boat or take your own speed boat. You can hire someone to row for you or to operate your motor. Fishing tackle may be rented. Fishing is good right now at Diamond Lake. For those interested in forest trips and mountain climbs equally fine accommodations are offered. Rule Long has a string of 25 excellent saddle animals and plenty of pack stock. He employs competent guides and you can make up a party to be gone for a half a day or for a week or a month. To the top of Mt. Thielsen and back is not a hard day's trip and you can ride a horse right to the very summit of Mt. Bailey and back in a day.

Return Trip Along South Umpqua Saturday night, Sunday and Sunday night we spent at the Diamond Lake lodge. Early Monday morning we headed our horses west and started toward home. The lake is 5200 feet above sea level. We climbed another thousand feet around behind Mt. Bailey and traveled for a few miles along the Rogue-Umpqua divide, thence in a northwesterly direction down Black Rock creek to the Black Rock ranger station. The Black Rock look-out station, directly above the ranger station is one of the oldest and best look-out stations in the forest. Those who have not seen a look-out station in a national forest have missed an extremely interesting sight. Efficiency and orderliness are the keynotes of those tiny forest "eyes."

A visitor to one of these look-outs is surprised to learn that the man in charge of the station or the "look-out" as he is called, must be keen-eyed, a mathematician, a first rate aerial mapper, a cook, a telephone expert, and a person of calm judgment and steady nerves. They are a wonderful bunch of young fellows, these look-outs.

It was a short day's ride Tuesday to reach the road camp above South Umpqua fifteen miles above Tillamook. The South Umpqua road is being extended as far as Camp Comfort but the construction work goes very slowly for the reason that the primary work of the

road crew is to be at hand in event of a fire in the forest. The scenery on the trip down the South Umpqua is not quite so gorgeous but there is something charming about the very tranquility of this stream. One of the beautiful spots of the South Umpqua is the falls about six miles above the end of the road. These falls are known as the Scudder Umpqua Falls and have a beautiful setting. We saw salmon trying to fight their way over these falls as we stood there.

Mrs. E. J. Lough had a fine supper ready for us at the road camp and after a few hours rest we came on into Roseburg and so the trip ended.

There is nothing extremely rough or dangerous about such a trip through the forest. Even without a guide one could scarcely stray from the trails which are all perfectly marked giving distance, directions, altitude and other needed information.

Splendid Fire Protection Record The men whose work it is to guard the Umpqua national forest against loss from fire are very proud of their record over the past eight years. Here are some figures on forest fires taken from the government records: In the eleven years 1909-1919 an average of 11,277 acres of forest land was burnt over each year. In the nine years from 1920 to 1928 an average of only 850 acres has been burned over each year. During the period prior to 1920 the average number of fires annually was 59. During the last nine years the average number of fires per year has been 65. More fires with much less loss means greater efficiency in stopping the fires. This is graphically shown by the fact that the average burn per fire prior to 1920 was 225 acres, while now the average burn per fire is but 13 acres. The total acres burned inside the national forest boundary is 1,221,301 acres. Just imagine the task it must be to keep fire loss in such a large area down to practically nothing. Paces could be written on the subject of the efficiency of the forest service organization which protects our Umpqua national forest from fire. Suffice to say that during the peak of summer employment counting road construction crews and all employees of the forest service working under Supervisor Neal the payroll contains only about 120 names. Translated into dollars the cost of fighting fire in the Umpqua national forest has averaged only \$6100 per year for the past nine years, a truly remarkable record.

DOUGLAS COUNTY HEALTH OFFICER TO GIVE SERUMS

Because of the many requests which have come to the Douglas county health unit for immunization, Dr. Herbert K. Kent, health officer, will give toxin-antitoxin immunization against diphtheria and smallpox vaccinations at cost to all who may wish it, he announced today.

Dr. Kent emphasizes the importance of having these immunizations made this summer before school begins. He states that the toxin-antitoxin does not make the person immune until six months after he has received the treatment, and so is powerless if given in the face of an epidemic. Toxin-antitoxin is given in a series of three injections, being given a week apart. Very slight, if any, reaction is experienced, and it does not inconvenience one in any way.

U. S. ARMY AIRMAN CRASHES TO DEATH

(Associated Press Lead Wire) FRANCE, Field, Panama, Aug. 1.—Major Paul T. Bock, of Illinois, commander of the 24th pursuit squadron of the army air corps, was killed today while at bombing practice over France.

Field Major Bock was flying alone when his airplane took a nose dive, being wrecked when it smashed to the ground.

work and facing of realities of life as important for the youth of America as a first class education. "There are three things which insure success—ambition, imagination and the will to work. Of these, the will to work accomplishes the most; education of the right kind gets quicker results."

"Do you consider the prevalent craze for setting of records, endurance tests, etc., healthy for industry in general?" "Yes."

"Given the same opportunity afforded the winner of this contest do you believe your own success would have been greater or earlier?" "Yes."

"Will a similar contest be held next year, or at regular intervals in the future?" "Don't know yet."

"Do you agree with the proposal of George W. Wickorham that the states should assume the burden of local prohibition enforcement?" "No."

"The boys were warned that the examination will be a hard one. The test is a written one and will be submitted in the form of a long questionnaire. Announcement of the scholarship award will be made tomorrow."

EDISON TO KEEP BRAIN GOING TO HELP INDUSTRY

(Continued from page 1)

for the good acting we have had in silent films. "Is the introduction of younger men into your organization, as a result of this contest, an indication of your retirement, and if so when will it take place?" "No, I'll never retire. It's unhealthy."

"Is there not a danger of serious unemployment if so much weight is laid on college and technical education and too many are turned out for the requirements of industry?"

"Industry is getting so complex that there is an immense shortage of the right kind of men to manage affairs. It is getting more serious every day as science discovers new pneumonias."

"What is the next invention or discovery you foresee?" "Utilization of natural products."

"Do you consider the will to

J.C. PENNEY CO. 229-231 CASS ST. ROSEBURG, OREGON. SAVINGS

On Needed Items for the Whole Family

Rayon Spreads For Attractive Beds A splendid assortment of bedspreads in blue, gold, and rose—Size 81x105. \$1.98

Muslin Our Rolla Isla Brand Bleached 36 inches wide. Unbleached 39 inches wide. Yard 10c

Brassieres Wide or Narrow Light cool and comfortable. And the price is low. All sizes. 25c

Men's Unions Athletic Style Good quality dimity, full cut and well made. All sizes. Only 49c

Painters O'alls Standard cut and union made. Every pair built to satisfy. Save on these. Plenty of pockets. \$1.29

Cotton Blankets Several Colors Light weight single blankets. Size 70x80, well bound. 98c

Rayon Bloomers French panties, or most any wanted style. All colors and sizes. 98c

Tennis Shoes White or brown uppers, lace-toe pattern, crepe-sole. Sizes for boys and men. 98c

Hand Towels Cannon made, your choice of white or colored borders. Size 18x36. 10c

Turkish Towels Of Large Size Ger nine Cannon made towels, your choice of colored borders. Size 22x44. 25c

Porch Dresses In Wanted Styles Our pretty dresses for comfort and happiness. Fast colors. Sizes 36 to 50. 79c

Rondo Cambric A splendid assortment of this popular fast color print. Buy now for fall sewing. 36 inches wide. Yard 25c

Waist Overalls For Men Heavy weight, 8 oz. denim, copper riveted at seams and pockets. All sizes. 98c

Suit Cases For Vacation Our line of luggage is complete at very saving prices. Good quality suit cases. \$1.49

Children's Hose Sock-lets and 1-2 hose. A large assortment for you to choose from. Sizes 4 to 8. Pair 25c

Work Shoes For Men Two leather soles with a composition top sole makes this an outstanding shoe value. \$1.98

Riding Pants Good quality twill, extra well stitched, correctly tailored. Button leg. \$2.98

Work Shirts For Men Good quality blue chambray, two pockets, full cut and well made. 14 1/2 to 17. 49c

SPECIAL SUIT VALUES

Just twelve of these Adler Collegian suits left. They are ALL WOOL, HAND TAILORED suits. An opportunity you should not overlook. Sizes 35 to 38.

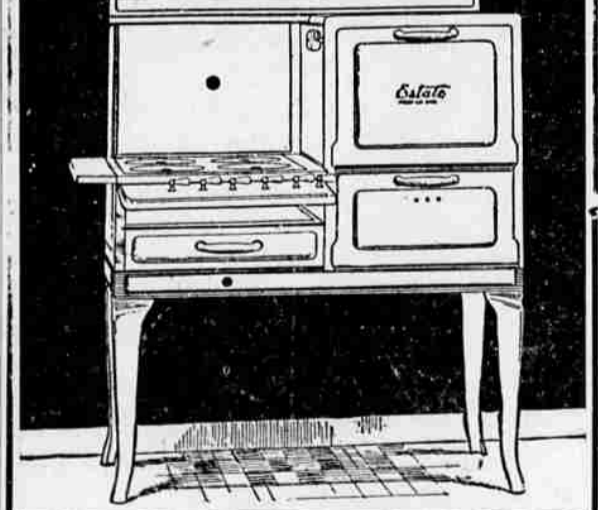
SEE THEM IN OUR WINDOWS \$17.85 (Exclusive, but not expensive)

SPENCER'S A MAN'S SHOP

DR. DEAN B. RUBAF OPTOMETRIST Specialist in the fitting of Glasses 116 Jackson St.

Robt. J. Craig ROOF SPECIALIST Composition and Cedar Shingles Roll roofing and hot coat work. Residence Phone 665-J Above all a good roof.

Double Boiler Oven that bakes with fresh air ThermEstate Oven Heat Control Two-Section Oven Bottom All Nuts and Bolts Concealed Rounded Easy-to-Clean Surfaces A G.A. Seal of Approval



Now A Better Way A Cooler Way To Cook Your Meals—ESTATE GAS RANGE Just arrived and on display at Gas Sales Room. To see one is to want one. Southern Oregon Gas Corporation 340 North Jackson Street Phone 235

Plente at Idlewild Park. Roofing at Wharton Bros.

Stock and Bonds

In a defunct concern is worthless paper.

A Warranty Deed

To a home is a document that represents wealth, both useful and valuable.

Own Your Home E. K. McLENDON 240 N. Jackson Roseburg, Oregon