

CHEVROLET SALES ZONE HEAD NAMED



W. M. PACKER

Announcement was made last week by E. W. Fulr, Pacific regional manager of the Chevrolet Motor Company, of the appointment of William H. Packer as zone sales manager for the southern California territory effective immediately. Packer succeeds George H. Wallace, who because of the outstanding record made by himself in the Los Angeles district, has been appointed assistant general sales manager of the Buick Motor Company at Flint, Mich. Wallace is a nationally known figure in the industry and becomes through his new position one of the outstanding executives in the automobile business. His association with General Motors units extends over a period of some years. Packer is succeeded in the position of city sales manager for Los Angeles by William C. Herring who has been regional sales promotion manager with offices at the Chevrolet Motor factory at Oakland for the entire Pacific region. Herring was formerly sales promotion manager of the Seattle district and his new position is another step in the rapid progress he has made in the last few years.

UNIFORM SERVICE FOR FORD OWNERS

In describing the controlled service methods of the Ford Motor Company, C. A. Lockwood, Ford dealer in this city, pointed out that it is now possible for the Ford owner to get the same kind of attention for his automobile in the large city, the small country village or the distant foreign country, due to the universal use of special service equipment and to the Ford service schools.

"The policy of the Ford Motor Company with respect to service," said Mr. Lockwood, "is set out in the statement by Henry Ford:

"It has always been our belief, said Mr. Ford, that a sale does not complete the transaction between us and the buyer, but establishes a new obligation on us to see that his car gives him service. We are as much interested in his economical operation of the car as he is in our economical manufacture of it.

"This is only good business on our part. If our car gives service, sales will take care of themselves. For that reason we have installed a system of controlled service to take care of all Ford cars needs in an economical and improved manner. We wish all users of Ford cars to know that they are entitled to it in this respect, so that they may readily avail themselves of this service.

"When the Model 'A' Ford was introduced, the manufacture of tools and equipment especially designed for service work on it was underway. This equipment has been built to make it easy for the Ford service man to do his work properly, without holding cramped and strained positions or working at odd dark corners. Special tools are available for virtually every standard operation on the Model 'A' Ford car.

"Ford service men attend the

3 Roast a 000 pound TURKEY

Some of it would be raw!

COFFEE roasted in milk is like that. Some is underdone and some overdone. Hills Bros. Coffee, however, is famous for its uniform flavor. It is roasted by a patented, continuous process—only a few pounds at a time. Every berry—every pound—is roasted evenly. And you taste a matchless flavor in every cup.



special schools where every feature of service work is taught, and the result is uniform service. Cleanliness is an important factor in Ford service. Much of the equipment has been designed to keep the automobile clean while it is being greased, adjusted or given other service attention.

AMERICAN WOMEN DESCRIBE HORROR OF CHINESE RAID

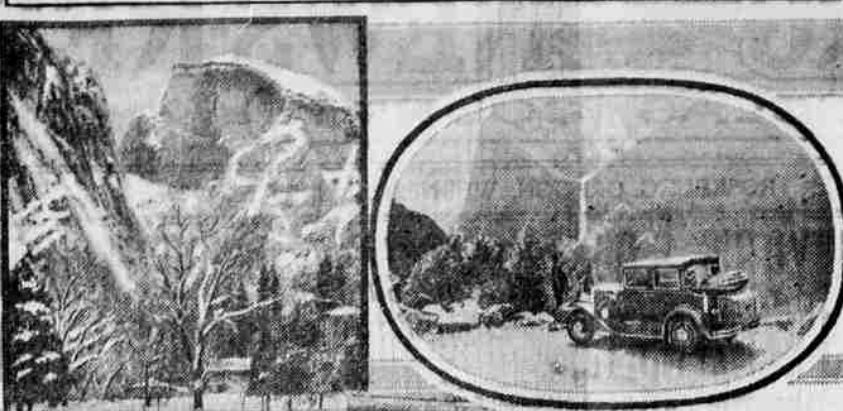
Associated Press Special Wire
AMOY, China, May 29.—Although still suffering from nervous shock, Mrs. C. H. Holleman and Mrs. Henry Poppen were able today to tell something of their thrilling experiences during the looting of the Lungyengchow mission and their escape to Amoy in Chinese clothing.

Mrs. Holleman's husband, Dr. Holleman of Springfield, South Dakota, was kidnapped by the Chinese who said they needed him to treat their wounded. The refugees said that 2,000 communist soldiers attacked the missionary compound of the American Reformed Presbyterian mission.

"We had risen early and were finished with breakfast," Mrs. Poppen, wife of a missionary who escaped, said. "I was teaching my son Kenneth when rifle firing began near our house and enemy troops were seen approaching. Realizing the danger, I hurried with the children to the girls' school. There was no time to collect personal effects. Mrs. Holleman with her children joined us at the school.

"This location soon became precarious as marauding troops were firing their rifles recklessly. We attempted to enter the homes of Chinese friends, but they refused, having no room for us and feeling that our presence might endanger the lives of the entire Chinese family. However, other Chinese friends gave us Chinese clothing

YOSEMITE'S LAST SNOW



The next two weeks will see the end of the snow in Yosemite, A. H. Patterson, Oakland-Pontiac dealer, was the first to come out of the valley over the Big Oak Flat Road this year. These photos show Half Dome, Bridal Veil Falls, and the road through the snow at Gin Flat.

and directed us to an empty house where we hid throughout the day. Consequently I do not know the detailed activities of the looting troops throughout the day.

"After dark we dressed, in the Chinese clothes and crossed the river to the other side of the city where other Chinese friends received and assisted us, making arrangements for our departure to Amoy. These friends insisted that we go quickly, since to remain at Lungyengchow endangered both them and ourselves.

"We ate such Chinese food as could be obtained along the way. Only two sedan chairs could be obtained which meant the women and children had to mostly walk for more than fifty miles over rough mountain paths before they

dangerous when traveling after dark.

"Saturday night, May 25, cannot be fully described. It was so full of horrors, fears of bandits, near exhaustion and rain storms, the rain was pouring, lightning flashed and the thunder echoed through the mountains. We were wet to the skin and the children were crying and tired, often wading knee deep through muddy water. How we did it, I don't know."

Mrs. Poppen said that a Chinese school teacher and one faithful servant accompanied the party. The miserable stopping places were made worse by a heavy rain which poured upon us in torrents. This made the road slippery and

were able to obtain better means of transportation. They kept crawling over mountain after mountain until long after dark, stopping only for a few hours for necessary rest and then starting again by moonlight.

Efforts to communicate with Dr. Holleman have been unavailing as his whereabouts are not known.

NOTICE

All bills against the county should be filed on or before the first day of the month, otherwise they will not be considered till the following month. Roseburg, Ore., May 23, 1929. COUNTY COURT.

CHILOQUIN LAWYER USES OFFENSIVE WORDS IN BRIEF

Wilkins Must Apologize to Judge Leavitt or Lose An Appeal, Supreme Court Rules.

SALEM, Ore., May 28.—Unless M. O. Wilkins, an attorney of Chiloquin, Klamath county, apologizes to Judge A. L. Leavitt of Klamath Falls, and to the state supreme court within 20 days for certain language used in the case of George M. Strowbridge and others against the City of Chiloquin, the supreme court will grant a motion to strike Wilkins' brief from the records. The court so states in an opinion today written by Judge O. P. Co-show.

The language used by Wilkins to which the supreme court objects, and which is termed "a very flagrant abuse of the duties of attorneys who are public officers," is directed at Judge Leavitt.

The case was one in which the plaintiffs sued the City of Chiloquin, challenging the validity of certain items in a sewer assessment. They appealed from a decree favoring the city.

Attorney Coores Court. The supreme court opinion quotes from Wilkins' brief in which he speaks of the trick and sharp practice of the defendants, and "a willing judge who was then a candidate for re-election."

In another place the brief speaks of the prejudiced court, and again he writes: "when the decree was written, the court, either carelessly or of premeditated prejudice, fixed the amount of the final levy at \$24,914.64."

In another paragraph the brief calls the decree a travesty.

"From a reading of the brief,"

says the supreme court opinion, "it seems that the attorney for plaintiffs is aggrieved because his motion to disqualify Judge Leavitt was denied by him. That motion was not presented, however, until after a motion and a demurrer had been presented and argued, and the case put at issue on the facts more than one day prior to the attempt to disqualify Judge Leavitt. Plaintiffs were not entitled to disqualify the judge under the circumstances."

ROSEBURG UNDERTAKING CO.

Established 1901
M. E. RITTER, Manager
Founded and Maintained on Efficient Service and Courtesy
Phone 284
Oak and Kane St. AMBULANCE SERVICE Licensed Lady Embalmer

How to Quiet a Back Seat Driver

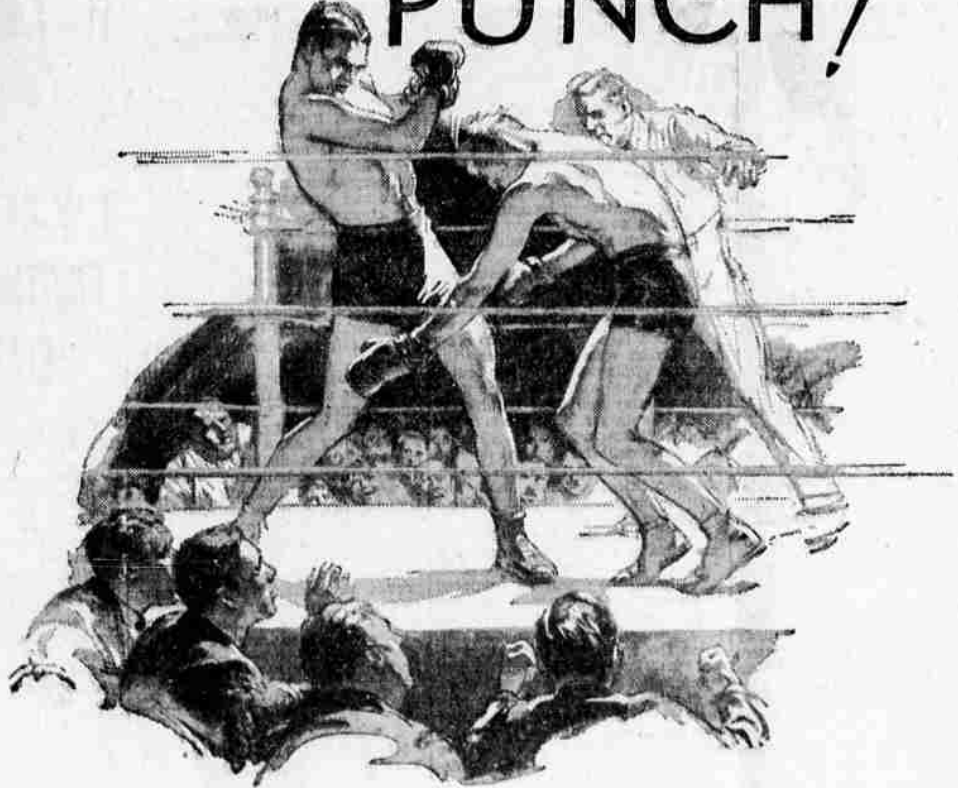
"Slow Down!"—"Be careful of these turns!"—"For Heaven's sake, John, do you want to kill us all?" In a lot of cases, there's probably an excuse for that sort of thing. But if your wheels are equipped with the new and improved "Kelly Registered" tires even the people in the back seat can have complete peace of mind, for Kellys are rugged—built to insure perfect safety under modern driving conditions. Come in, we will be glad to show you our line of Kelly-Springfield tires.

Motor Reconditioning, Car Washing, Greasing and Tire Repairing.

ROSE GARAGE

Rose and Lane Sts. McMillin & Robertson Phone 66

...in the ring it's PUNCH!



...in a cigarette it's TASTE!



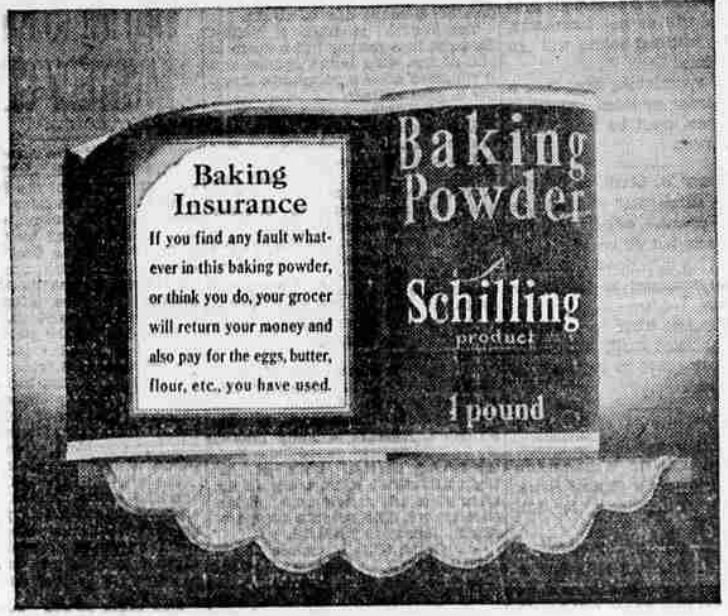
MILD and yet THEY SATISFY

TASTE above everything

Why are Chesterfield tobaccos "cross-blended?" Why are they so thoroughly aged? Why do our leaf buyers watch quality so closely? Why is the Chesterfield blend so accurate? You get the answer when you light up; you get out of your Chesterfields exactly what we put in—"taste... above everything."

Chesterfield

FINE TURKISH and DOMESTIC tobaccos, not only BLENDED but CROSS-BLENDED



A full pound for your pound price [It means 10c in your purse]

All cream of tartar baking powders sell at about the same price. But some contain only 3/4 of a pound. One contains a full pound. And "1 pound" is printed on the tin in plain sight.

There are cheaper baking powders than Schilling—but they contain no cream of tartar. Ask any domestic science teacher which she prefers—a cream of tartar baking powder or a substitute. Ask your doctor. Ask any pure food department.

All cream of tartar baking powders are good—but you might just as well get a full pound for your pound price.

Read the Schilling label. It means just what it says. That's another Schilling way of keeping faith with you.



Coffee
32 Extracts
47 Spices
Tea